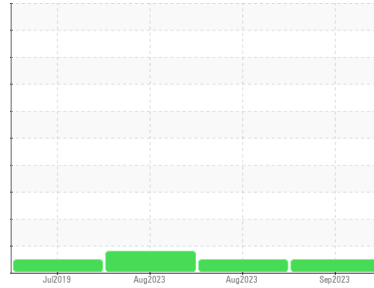


OIL ANALYSIS REPORT

Sample Rating Trend



NORMAL



Machine Id
SEW EURODRIVE GEARBOX B - INGREDION MAPLETON

Component
Gearbox
Fluid

PETRO CANADA PURITY FG EP GEAR OIL 220 (11 GAL)

DIAGNOSIS

Recommendation

Resample at the next service interval to monitor.

Wear

All component wear rates are normal.

Contamination

There is no indication of any contamination in the oil.

Fluid Condition

The AN level is acceptable for this fluid. The condition of the oil is suitable for further service.

SAMPLE INFORMATION

method	limit/base	current	history1	history2
Sample Number	Client Info	PCA0107517	PCA0107519	PCA0107520
Sample Date	Client Info	27 Sep 2023	02 Aug 2023	01 Aug 2023
Machine Age	hrs	Client Info	0	0
Oil Age	hrs	Client Info	0	0
Oil Changed	Client Info	N/A	N/A	N/A
Sample Status		NORMAL	NORMAL	ABNORMAL

WEAR METALS

method	limit/base	current	history1	history2	
PQ	ASTM D8184	20	16	105	
Iron	ppm	ASTM D5185m >200	5	8	▲ 207
Chromium	ppm	ASTM D5185m >15	0	0	2
Nickel	ppm	ASTM D5185m >15	0	0	0
Titanium	ppm	ASTM D5185m	0	0	<1
Silver	ppm	ASTM D5185m	0	0	0
Aluminum	ppm	ASTM D5185m >25	0	0	0
Lead	ppm	ASTM D5185m >100	0	0	0
Copper	ppm	ASTM D5185m >200	<1	<1	1
Tin	ppm	ASTM D5185m >25	0	0	0
Antimony	ppm	ASTM D5185m >5	---	---	---
Vanadium	ppm	ASTM D5185m	0	0	0
Cadmium	ppm	ASTM D5185m	0	0	0

ADDITIVES

method	limit/base	current	history1	history2	
Boron	ppm	ASTM D5185m	0	0	0
Barium	ppm	ASTM D5185m	0	0	0
Molybdenum	ppm	ASTM D5185m	0	0	<1
Manganese	ppm	ASTM D5185m	0	0	1
Magnesium	ppm	ASTM D5185m	<1	<1	<1
Calcium	ppm	ASTM D5185m	82	0	<1
Phosphorus	ppm	ASTM D5185m	439	146	161
Zinc	ppm	ASTM D5185m	2	2	6
Sulfur	ppm	ASTM D5185m	1880	862	1093

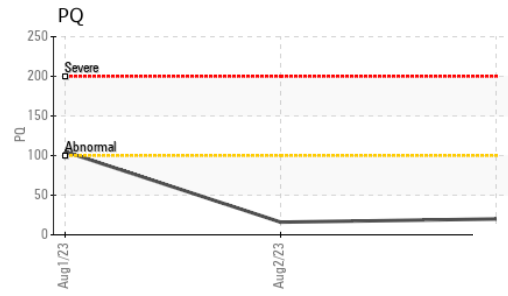
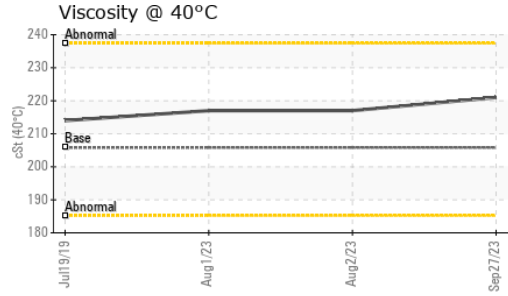
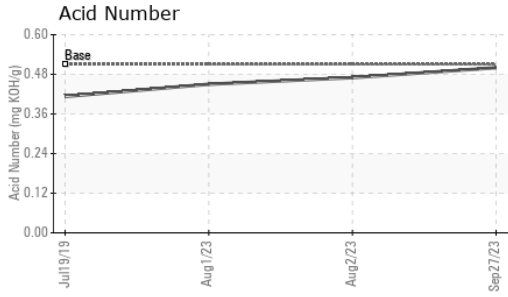
CONTAMINANTS

method	limit/base	current	history1	history2	
Silicon	ppm	ASTM D5185m >50	5	5	8
Sodium	ppm	ASTM D5185m	<1	0	0
Potassium	ppm	ASTM D5185m >20	0	0	0

FLUID DEGRADATION

method	limit/base	current	history1	history2	
Acid Number (AN)	mg KOH/g	ASTM D8045 0.51	0.50	0.47	0.45

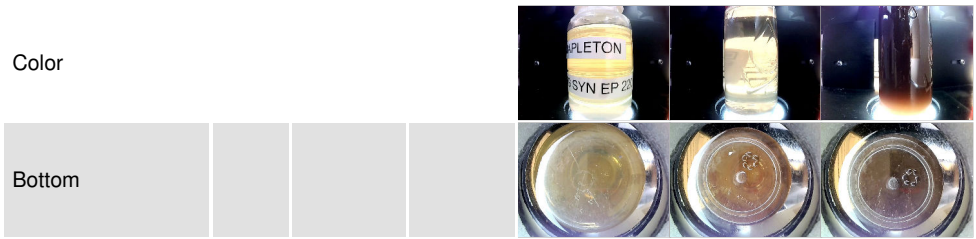
OIL ANALYSIS REPORT



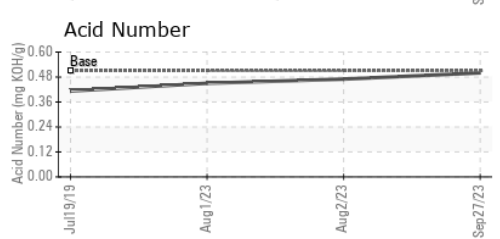
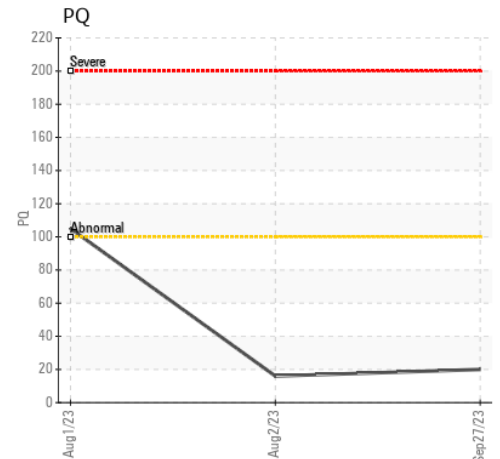
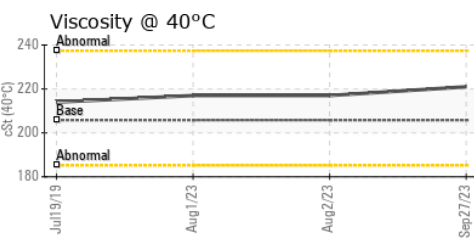
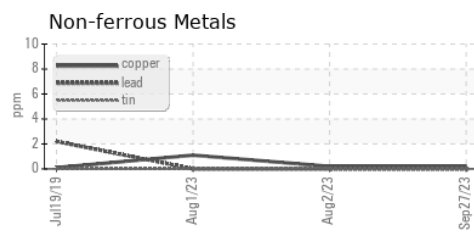
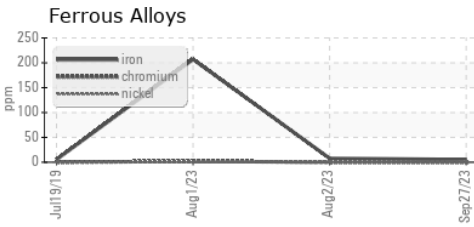
VISUAL	method	limit/base	current	history1	history2
White Metal	scalar	*Visual	NONE	NONE	NONE
Yellow Metal	scalar	*Visual	NONE	NONE	NONE
Precipitate	scalar	*Visual	NONE	NONE	NONE
Silt	scalar	*Visual	NONE	NONE	NONE
Debris	scalar	*Visual	NONE	NONE	LIGHT
Sand/Dirt	scalar	*Visual	NONE	NONE	NONE
Appearance	scalar	*Visual	NORML	NORML	NORML
Odor	scalar	*Visual	NORML	NORML	NORML
Emulsified Water	scalar	*Visual	>0.2	NEG	NEG
Free Water	scalar	*Visual		NEG	NEG

FLUID PROPERTIES	method	limit/base	current	history1	history2
Visc @ 40°C	cSt	ASTM D445	205.8	221	217

SAMPLE IMAGES	method	limit/base	current	history1	history2
---------------	--------	------------	---------	----------	----------



GRAPHS



Laboratory : WearCheck USA - 501 Madison Ave., Cary, NC 27513
Sample No. : PCA0107517 **Received** : 04 Oct 2023
Lab Number : 05969731 **Diagnosed** : 06 Oct 2023
Unique Number : 10676282 **Diagnostician** : Doug Bogart
Test Package : PLANT

YVETTE TRZCINSKI
 850 WESTBROOKE PKWY
 WAUKESHA, WI
 US 53186
 Contact: YVETTE TRZCINSKI
 yvette.trzcinski@hfsinclair.com

Certificate L2367
 To discuss this sample report, contact Customer Service at 1-800-237-1369.
 * - Denotes test methods that are outside of the ISO 17025 scope of accreditation.
 Statements of conformity to specifications are based on the simple acceptance decision rule (JCGM 106:2012)