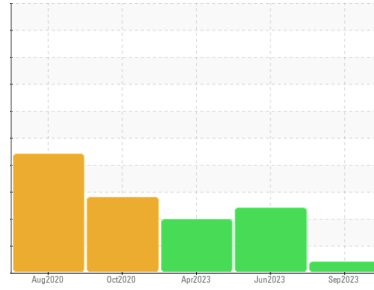


PROBLEM SUMMARY

Area
PASTA [98412332]
 Machine Id
B PRESS VACUUM MIXER
 Component
Gearbox
 Fluid
GEAR OIL ISO 320 (--- GAL)

Sample Rating Trend



VIS DEBRIS



COMPONENT CONDITION SUMMARY

No relevant graphs to display

RECOMMENDATION

The oil change at the time of sampling has been noted. We recommend you service the filters on this component if applicable. Resample at the next service interval to monitor. We were unable to perform a particle count due to a high concentration of particles present in this sample.

PROBLEMATIC TEST RESULTS

Sample Status				ABNORMAL	ABNORMAL	ABNORMAL
Debris	scalar	*Visual	NONE	▲ MODER	NONE	▲ MODER

Customer Id: KRASPRMO
 Sample No.: PCA0083738
 Lab Number: 05977058
 Test Package: IND 2



To manage this report scan the QR code

To discuss the diagnosis or test data:
 Don Baldrige +1
don.b505@comcast.net

To change component or sample information:
 Customer Service +1 1-800-237-1369
customerservice@wearcheck.com

RECOMMENDED ACTIONS

Action	Status	Date	Done By	Description
Change Filter	---	---	?	We recommend you service the filters on this component if applicable.
Alert	---	---	?	We were unable to perform a particle count due to a high concentration of particles present in this sample.

HISTORICAL DIAGNOSIS

30 Jun 2023 Diag: Don Baldrige

ISO



The oil change at the time of sampling has been noted. We recommend you service the filters on this component if applicable. Resample at the next service interval to monitor. All component wear rates are normal. There is a high amount of particulates present in the oil. The AN level is acceptable for this fluid. The condition of the oil is suitable for further service.

[view report](#)



03 Apr 2023 Diag: Doug Bogart

WATER



The oil change at the time of sampling has been noted. Resample at the next service interval to monitor. We were unable to perform a particle count due to a high concentration of particles present in this sample. All component wear rates are normal. Free water present. Moderate concentration of visible dirt/debris present in the oil. The AN level is acceptable for this fluid.

[view report](#)



24 Oct 2020 Diag: Jonathan Hester

DIRT

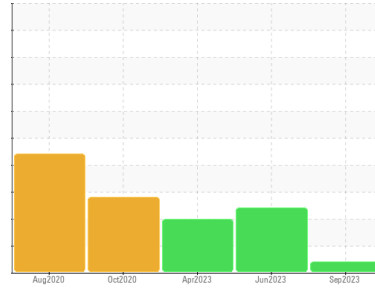


The oil change at the time of sampling has been noted. We recommend you service the filters on this component if applicable. Resample at the next service interval to monitor. We were unable to perform a particle count due to a high concentration of particles present in this sample. All component wear rates are normal. Elemental level of silicon (Si) above normal indicating ingress of seal material. Moderate concentration of visible dirt/debris present in the oil. The AN level is acceptable for this fluid. The condition of the oil is suitable for further service.

[view report](#)



Area
PASTA [98412332]
 Machine Id
B PRESS VACUUM MIXER
 Component
Gearbox
 Fluid
GEAR OIL ISO 320 (--- GAL)



DIAGNOSIS

Recommendation
 The oil change at the time of sampling has been noted. We recommend you service the filters on this component if applicable. Resample at the next service interval to monitor. We were unable to perform a particle count due to a high concentration of particles present in this sample.

Wear
 All component wear rates are normal.

Contamination
 Moderate concentration of visible dirt/debris present in the oil.

Fluid Condition
 The AN level is acceptable for this fluid. The condition of the oil is acceptable for the time in service.

SAMPLE INFORMATION

method	limit/base	current	history1	history2
Sample Number	Client Info	PCA0083738	PCA0083729	PCA0073973
Sample Date	Client Info	23 Sep 2023	30 Jun 2023	03 Apr 2023
Machine Age	hrs	0	0	0
Oil Age	hrs	0	0	0
Oil Changed	Client Info	Changed	Changed	Changed
Sample Status		ABNORMAL	ABNORMAL	ABNORMAL

WEAR METALS

method	limit/base	current	history1	history2	
Iron	ppm	ASTM D5185m >200	5	8	5
Chromium	ppm	ASTM D5185m >15	0	0	0
Nickel	ppm	ASTM D5185m >15	0	0	0
Titanium	ppm	ASTM D5185m	0	0	0
Silver	ppm	ASTM D5185m	0	0	0
Aluminum	ppm	ASTM D5185m >25	0	<1	0
Lead	ppm	ASTM D5185m >100	0	0	0
Copper	ppm	ASTM D5185m >200	0	0	<1
Tin	ppm	ASTM D5185m >25	0	0	0
Antimony	ppm	ASTM D5185m >5	---	---	---
Vanadium	ppm	ASTM D5185m	0	0	0
Cadmium	ppm	ASTM D5185m	0	0	0

ADDITIVES

method	limit/base	current	history1	history2	
Boron	ppm	ASTM D5185m 50	0	0	0
Barium	ppm	ASTM D5185m 15	0	0	0
Molybdenum	ppm	ASTM D5185m 15	0	0	0
Manganese	ppm	ASTM D5185m	0	0	<1
Magnesium	ppm	ASTM D5185m 50	<1	<1	2
Calcium	ppm	ASTM D5185m 50	0	0	1
Phosphorus	ppm	ASTM D5185m 350	546	502	533
Zinc	ppm	ASTM D5185m 100	0	0	6
Sulfur	ppm	ASTM D5185m 12500	1417	1460	1506

CONTAMINANTS

method	limit/base	current	history1	history2	
Silicon	ppm	ASTM D5185m >50	17	21	18
Sodium	ppm	ASTM D5185m	0	0	0
Potassium	ppm	ASTM D5185m >20	2	<1	0

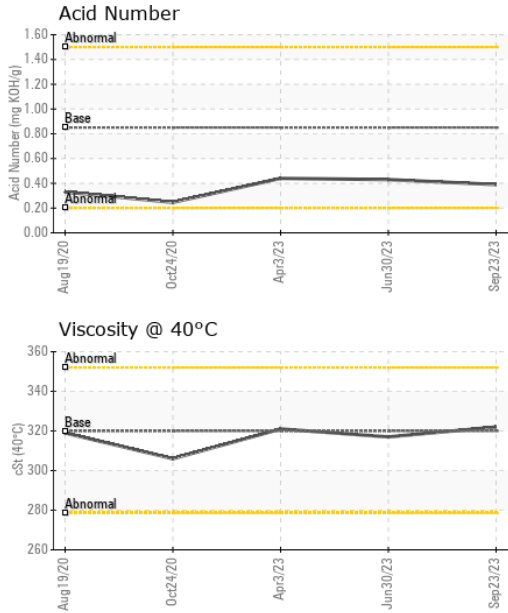
FLUID CLEANLINESS

method	limit/base	current	history1	history2
Particles >4µm	ASTM D7647 >1300	---	▲ 302395	---
Particles >6µm	ASTM D7647 >320	---	▲ 215055	---
Particles >14µm	ASTM D7647 >80	---	▲ 18502	---
Particles >21µm	ASTM D7647 >20	---	▲ 1441	---
Particles >38µm	ASTM D7647 >4	---	▲ 8	---
Particles >71µm	ASTM D7647 >3	---	▲ 0	---
Oil Cleanliness	ISO 4406 (c) >17/15/13	---	▲ 25/25/21	---

FLUID DEGRADATION

method	limit/base	current	history1	history2	
Acid Number (AN)	mg KOH/g	ASTM D8045 0.85	0.39	0.43	0.44

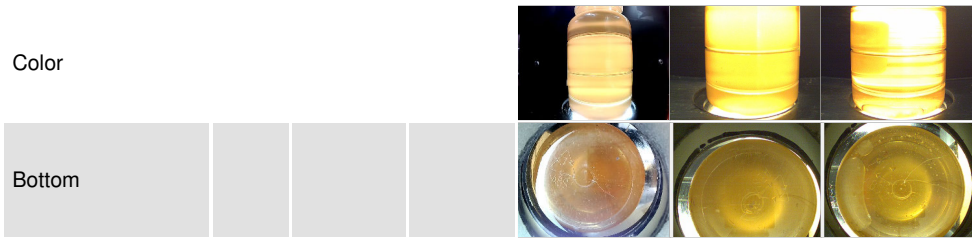
OIL ANALYSIS REPORT



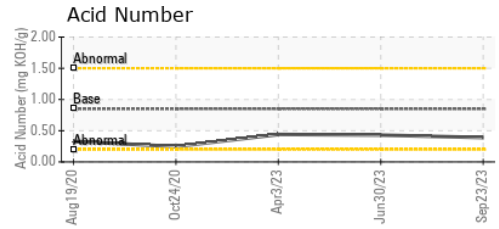
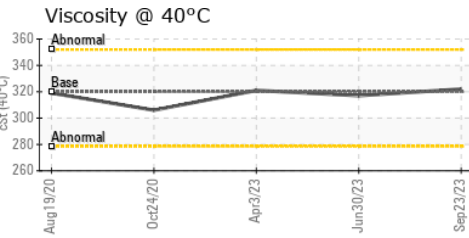
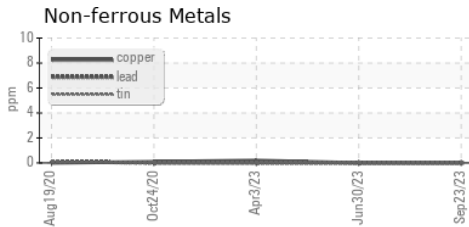
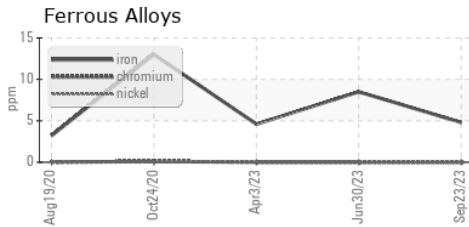
VISUAL	method	limit/base	current	history1	history2
White Metal	scalar	*Visual	NONE	NONE	NONE
Yellow Metal	scalar	*Visual	NONE	NONE	NONE
Precipitate	scalar	*Visual	NONE	NONE	NONE
Silt	scalar	*Visual	NONE	NONE	NONE
Debris	scalar	*Visual	NONE	▲ MODER	▲ MODER
Sand/Dirt	scalar	*Visual	NONE	NONE	NONE
Appearance	scalar	*Visual	NORML	NORML	NORML
Odor	scalar	*Visual	NORML	NORML	NORML
Emulsified Water	scalar	*Visual	>0.2	NEG	0.2%
Free Water	scalar	*Visual		NEG	▲ 1.0

FLUID PROPERTIES	method	limit/base	current	history1	history2	
Visc @ 40°C	cSt	ASTM D445	320	322	317	321

SAMPLE IMAGES	method	limit/base	current	history1	history2
---------------	--------	------------	---------	----------	----------



GRAPHS



Certificate L2367

Laboratory : WearCheck USA - 501 Madison Ave., Cary, NC 27513
Sample No. : PCA0083738 **Received** : 12 Oct 2023
Lab Number : 05977058 **Diagnosed** : 15 Oct 2023
Unique Number : 10689008 **Diagnostician** : Don Baldrige
Test Package : IND 2 (Additional Tests: PrtCount)

KraftHeinz - Springfield - Plant 8311 PCA
 2035 E BENNETT
 SPRINGFIELD, MO
 US 65804
 Contact: Service Manager

To discuss this sample report, contact Customer Service at 1-800-237-1369.

* - Denotes test methods that are outside of the ISO 17025 scope of accreditation.

Statements of conformity to specifications are based on the simple acceptance decision rule (JCGM 106:2012)

T:
F: