

Machine Id  
**EISEN BEISS L-9 130 REDUCTION**

Component  
**Gearbox**  
Fluid

**PETRO CANADA ENDURATEX EP 220 (25 GAL)**

**DIAGNOSIS**

**Recommendation**

Resample at the next service interval to monitor.

**Wear**

All component wear rates are normal.

**Contamination**

There is no indication of any contamination in the oil.

**Fluid Condition**

The AN level is acceptable for this fluid. The condition of the oil is suitable for further service.

**SAMPLE INFORMATION**

method	limit/base	current	history1	history2
Sample Number	Client Info	<b>PCA0091841</b>	PCA0091878	PCA0091867
Sample Date	Client Info	<b>27 Oct 2023</b>	20 Jul 2023	28 Apr 2023
Machine Age	hrs	Client Info	<b>0</b>	0
Oil Age	hrs	Client Info	<b>0</b>	0
Oil Changed	Client Info	<b>N/A</b>	N/A	N/A
Sample Status		<b>NORMAL</b>	MARGINAL	NORMAL

**WEAR METALS**

method	limit/base	current	history1	history2
PQ	ASTM D8184	<b>13</b>	12	14
Iron	ppm	ASTM D5185m >200	<b>3</b>	4
Chromium	ppm	ASTM D5185m >15	<b>0</b>	0
Nickel	ppm	ASTM D5185m >15	<b>0</b>	0
Titanium	ppm	ASTM D5185m	<b>0</b>	<1
Silver	ppm	ASTM D5185m	<b>0</b>	0
Aluminum	ppm	ASTM D5185m >25	<b>0</b>	0
Lead	ppm	ASTM D5185m >100	<b>0</b>	0
Copper	ppm	ASTM D5185m >200	<b>0</b>	0
Tin	ppm	ASTM D5185m >25	<b>0</b>	0
Vanadium	ppm	ASTM D5185m	<b>0</b>	0
Cadmium	ppm	ASTM D5185m	<b>0</b>	0

**ADDITIVES**

method	limit/base	current	history1	history2
Boron	ppm	ASTM D5185m 60	<b>27</b>	24
Barium	ppm	ASTM D5185m 0	<b>1</b>	0
Molybdenum	ppm	ASTM D5185m 0	<b>0</b>	0
Manganese	ppm	ASTM D5185m 0	<b>0</b>	0
Magnesium	ppm	ASTM D5185m 0	<b>&lt;1</b>	0
Calcium	ppm	ASTM D5185m 0	<b>0</b>	0
Phosphorus	ppm	ASTM D5185m 270	<b>371</b>	426
Zinc	ppm	ASTM D5185m 0	<b>13</b>	<1
Sulfur	ppm	ASTM D5185m 11200	<b>5395</b>	6445

**CONTAMINANTS**

method	limit/base	current	history1	history2
Silicon	ppm	ASTM D5185m >50	<b>18</b>	20
Sodium	ppm	ASTM D5185m	<b>0</b>	0
Potassium	ppm	ASTM D5185m >20	<b>1</b>	1

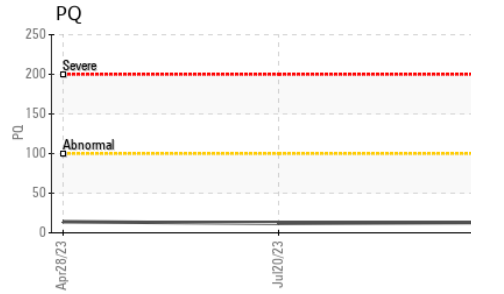
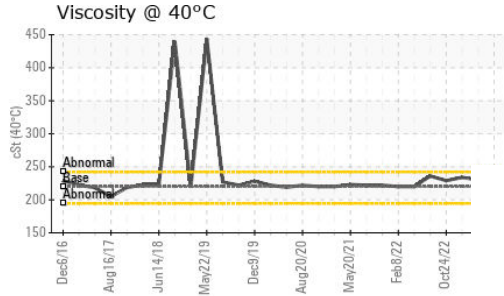
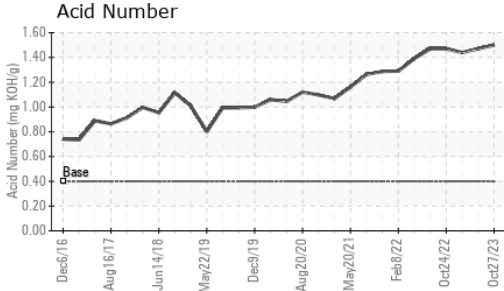
**FLUID DEGRADATION**

method	limit/base	current	history1	history2
Acid Number (AN)	mg KOH/g	ASTM D8045 0.40	<b>1.50</b>	1.47

**VISUAL**

method	limit/base	current	history1	history2
White Metal	scalar	*Visual NONE	<b>NONE</b>	NONE
Yellow Metal	scalar	*Visual NONE	<b>NONE</b>	NONE
Precipitate	scalar	*Visual NONE	<b>NONE</b>	NONE
Silt	scalar	*Visual NONE	<b>NONE</b>	NONE
Debris	scalar	*Visual NONE	<b>LIGHT</b>	▲ MODER
Sand/Dirt	scalar	*Visual NONE	<b>NONE</b>	NONE
Appearance	scalar	*Visual NORML	<b>NORML</b>	NORML
Odor	scalar	*Visual NORML	<b>NORML</b>	NORML
Emulsified Water	scalar	*Visual >0.2	<b>NEG</b>	NEG
Free Water	scalar	*Visual	<b>NEG</b>	NEG

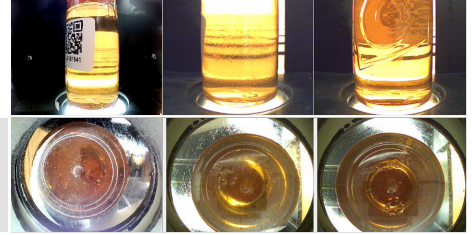
# OIL ANALYSIS REPORT



FLUID PROPERTIES		method	limit/base	current	history1	history2
Visc @ 40°C	cSt	ASTM D445	220	<b>230</b>	230	234

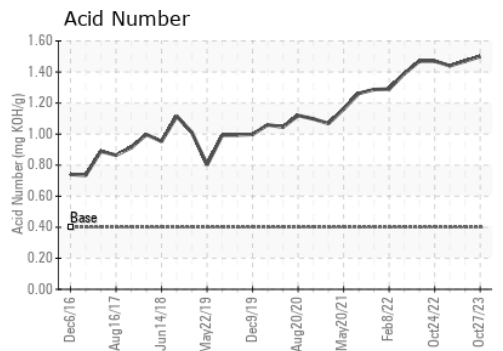
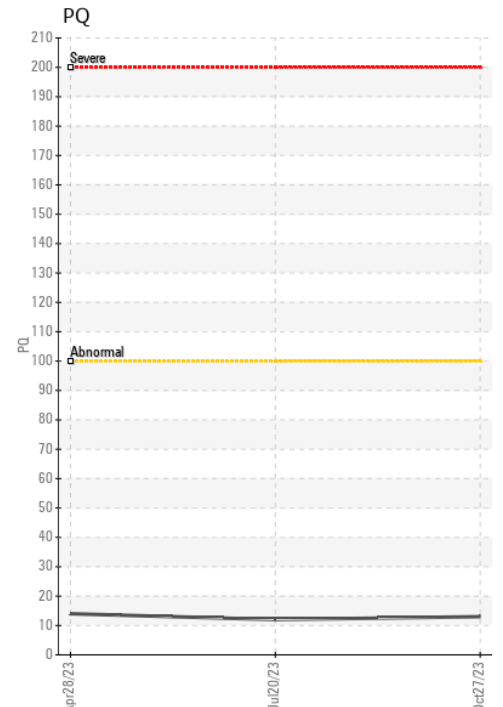
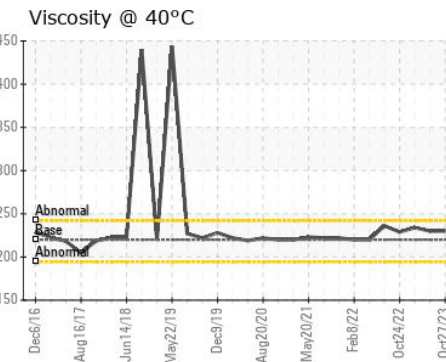
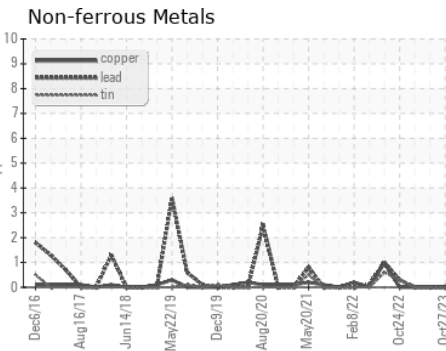
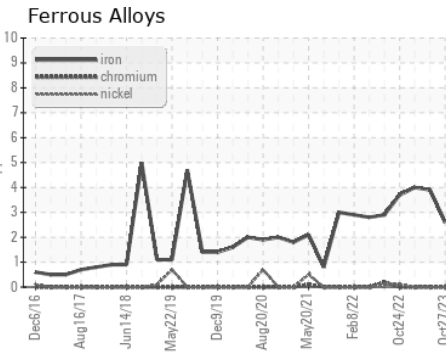
SAMPLE IMAGES		method	limit/base	current	history1	history2
---------------	--	--------	------------	---------	----------	----------

Color



Bottom

## GRAPHS



Certificate L2367

**Laboratory** : WearCheck USA - 501 Madison Ave., Cary, NC 27513  
**Sample No.** : PCA0091841 **Received** : 02 Nov 2023  
**Lab Number** : **05996830** **Diagnosed** : 07 Nov 2023  
**Unique Number** : 10725190 **Diagnostician** : Jonathan Hester  
**Test Package** : PLANT

**CERTAINTED VINYL PLANT**  
 2651 PENNY RD  
 CLAREMONT, NC  
 US 28613  
 Contact: BRUCE JAMES  
 bruce.a.james@saint-gobain.com  
 T: (828)459-3320  
 F: (828)459-3329

To discuss this sample report, contact Customer Service at 1-800-237-1369.

\* - Denotes test methods that are outside of the ISO 17025 scope of accreditation.

Statements of conformity to specifications are based on the simple acceptance decision rule (JCGM 106:2012)