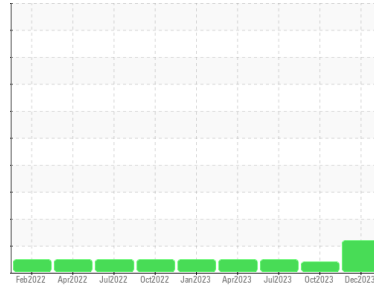


OIL ANALYSIS REPORT

Sample Rating Trend



ISO



Area
TUMBLE ROOM [98651033]
 Machine Id
KR-GF-003167 - TUMBLER 1 (S/N TUMBLE ROOM - 11513089)
 Component
Gearbox
 Fluid
SCHAEFFER 293A SUPREME GEAR LUBE NO TACK 220 (72 QTS)

DIAGNOSIS

Recommendation

No corrective action is recommended at this time. Resample at the next service interval to monitor. (Customer Sample Comment: 98651033)

Wear

All component wear rates are normal.

Contamination

There is a high amount of silt (particulates < 14 microns in size) present in the oil.

Fluid Condition

The AN level is acceptable for this fluid. The condition of the oil is suitable for further service.

SAMPLE INFORMATION

method	limit/base	current	history1	history2
Sample Number	Client Info	PCA0114844	PCA0106050	PCA0102540
Sample Date	Client Info	20 Dec 2023	02 Oct 2023	31 Jul 2023
Machine Age	hrs	Client Info	0	0
Oil Age	hrs	Client Info	0	0
Oil Changed	Client Info	Not Chngd	N/A	N/A
Sample Status		ABNORMAL	ABNORMAL	NORMAL

CONTAMINATION

method	limit/base	current	history1	history2
Water	WC Method >0.2	NEG	NEG	NEG

WEAR METALS

method	limit/base	current	history1	history2
Iron	ppm ASTM D5185m >200	98	81	2
Chromium	ppm ASTM D5185m >15	<1	1	1
Nickel	ppm ASTM D5185m >15	0	0	1
Titanium	ppm ASTM D5185m	0	0	1
Silver	ppm ASTM D5185m	0	0	3
Aluminum	ppm ASTM D5185m >25	0	0	0
Lead	ppm ASTM D5185m >100	0	0	8
Copper	ppm ASTM D5185m >200	<1	<1	2
Tin	ppm ASTM D5185m >25	0	0	2
Vanadium	ppm ASTM D5185m	0	0	2
Cadmium	ppm ASTM D5185m	0	0	<1

ADDITIVES

method	limit/base	current	history1	history2
Boron	ppm ASTM D5185m	0	0	1
Barium	ppm ASTM D5185m	0	0	0
Molybdenum	ppm ASTM D5185m	0	<1	1
Manganese	ppm ASTM D5185m	1	<1	<1
Magnesium	ppm ASTM D5185m	0	1	19
Calcium	ppm ASTM D5185m	0	12	0
Phosphorus	ppm ASTM D5185m	256	273	161
Zinc	ppm ASTM D5185m	0	24	0
Sulfur	ppm ASTM D5185m	10368	11368	12398

CONTAMINANTS

method	limit/base	current	history1	history2
Silicon	ppm ASTM D5185m >50	3	3	3
Sodium	ppm ASTM D5185m	4	<1	43
Potassium	ppm ASTM D5185m >20	2	1	102

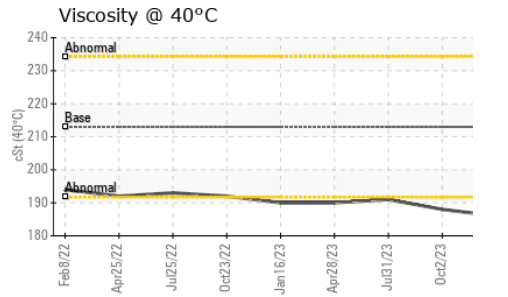
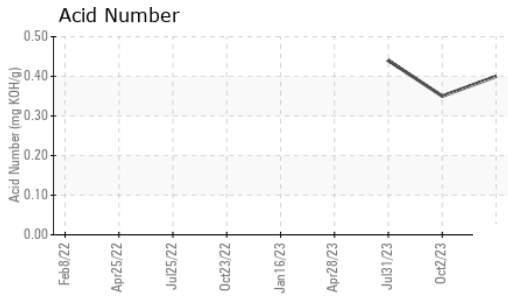
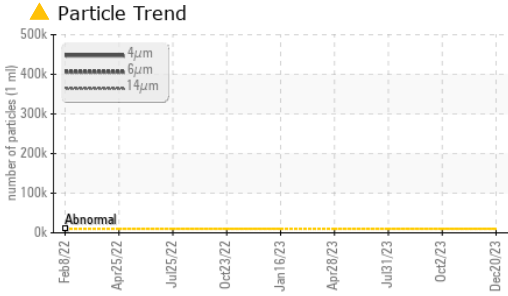
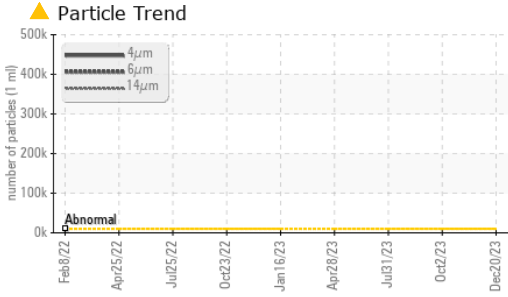
FLUID CLEANLINESS

method	limit/base	current	history1	history2
Particles >4µm	ASTM D7647 >10000	▲ 396320	---	---
Particles >6µm	ASTM D7647 >2500	▲ 176622	---	---
Particles >14µm	ASTM D7647 >640	607	---	---
Particles >21µm	ASTM D7647 >160	65	---	---
Particles >38µm	ASTM D7647 >40	0	---	---
Particles >71µm	ASTM D7647 >10	0	---	---
Oil Cleanliness	ISO 4406 (c) >20/18/16	▲ 26/25/16	---	---

FLUID DEGRADATION

method	limit/base	current	history1	history2
Acid Number (AN)	mg KOH/g ASTM D8045	0.40	0.35	0.44

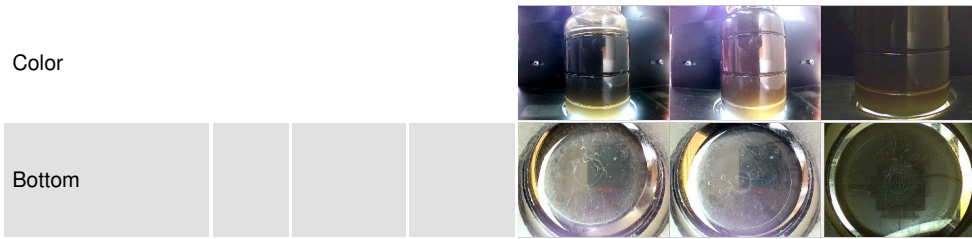
OIL ANALYSIS REPORT



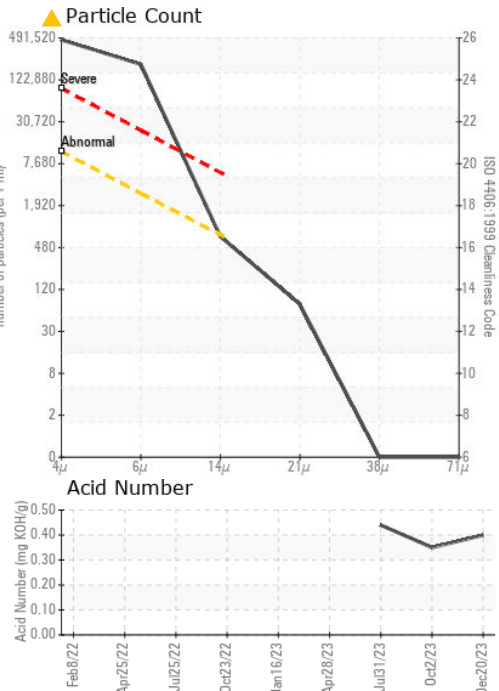
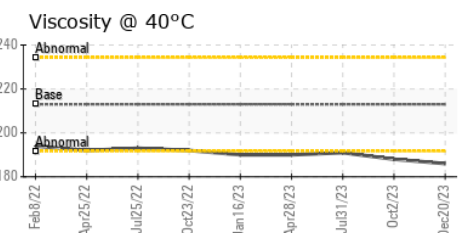
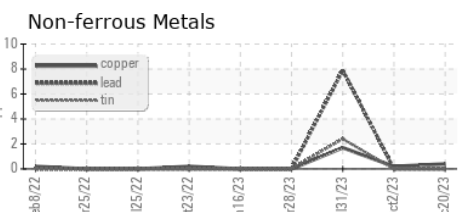
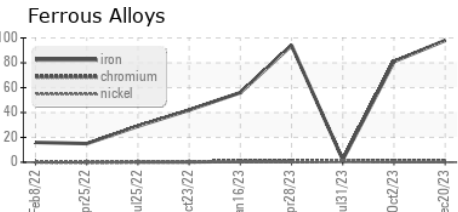
PARAMETER	method	limit/base	current	history1	history2
White Metal	scalar	*Visual	NONE	NONE	NONE
Yellow Metal	scalar	*Visual	NONE	NONE	NONE
Precipitate	scalar	*Visual	NONE	NONE	NONE
Silt	scalar	*Visual	NONE	NONE	NONE
Debris	scalar	*Visual	NONE	▲ MODER	NONE
Sand/Dirt	scalar	*Visual	NONE	NONE	NONE
Appearance	scalar	*Visual	NORML	NORML	NORML
Odor	scalar	*Visual	NORML	NORML	NORML
Emulsified Water	scalar	*Visual	>0.2	NEG	NEG
Free Water	scalar	*Visual		NEG	NEG

FLUID PROPERTIES	method	limit/base	current	history1	history2
Visc @ 40°C	cSt	ASTM D445	213	186	188

SAMPLE IMAGES	method	limit/base	current	history1	history2
---------------	--------	------------	---------	----------	----------



GRAPHS



Certificate L2367

Laboratory : WearCheck USA - 501 Madison Ave., Cary, NC 27513
Sample No. : PCA0114844 **Received** : 29 Dec 2023
Lab Number : 06047764 **Diagnosed** : 02 Jan 2024
Unique Number : 10808372 **Diagnostician** : Doug Bogart
Test Package : IND 2 (Additional Tests: PrtCount)

KraftHeinz - Kirksville - Plant 8333 PCA
 2504 INDUSTRIAL DR
 KIRKSVILLE, MO
 US 63501
 Contact: WALLACE WARD
 wallace.ward@kraftheinzcompany.com
 T: (660)627-1031
 F: (660)627-5887

To discuss this sample report, contact Customer Service at 1-800-237-1369.

* - Denotes test methods that are outside of the ISO 17025 scope of accreditation.

Statements of conformity to specifications are based on the simple acceptance decision rule (JCGM 106:2012)