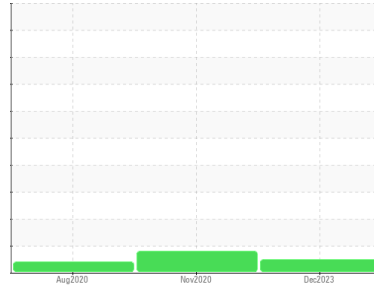


OIL ANALYSIS REPORT

Sample Rating Trend



NORMAL



Machine Id
ARGOS RM 2 MAIN BLOWER

Component
Blower

Fluid
PETRO CANADA PURITY FG SYNTH EP GEAR 220 (--- GAL)

DIAGNOSIS

Recommendation

Resample at the next service interval to monitor.

Wear

All component wear rates are normal.

Contamination

There is no indication of any contamination in the oil.

Fluid Condition

The AN level is acceptable for this fluid. The condition of the oil is suitable for further service.

SAMPLE INFORMATION

	method	limit/base	current	history1	history2
Sample Number	Client Info		PCA0110392	PCA0006609	PCA0012614
Sample Date	Client Info		23 Dec 2023	19 Nov 2020	28 Aug 2020
Machine Age	hrs	Client Info	10	0	0
Oil Age	hrs	Client Info	1	0	0
Oil Changed	Client Info		Changed	N/A	N/A
Sample Status			NORMAL	ABNORMAL	ATTENTION

CONTAMINATION

	method	limit/base	current	history1	history2
Water	WC Method		NEG	NEG	NEG

WEAR METALS

	method	limit/base	current	history1	history2
Iron	ppm	ASTM D5185m >20	0	3	2
Chromium	ppm	ASTM D5185m >20	0	0	0
Nickel	ppm	ASTM D5185m >20	0	0	0
Titanium	ppm	ASTM D5185m	0	<1	<1
Silver	ppm	ASTM D5185m	0	0	<1
Aluminum	ppm	ASTM D5185m >20	0	<1	0
Lead	ppm	ASTM D5185m >20	0	2	0
Copper	ppm	ASTM D5185m >20	<1	<1	<1
Tin	ppm	ASTM D5185m >20	0	0	<1
Antimony	ppm	ASTM D5185m	---	0	0
Vanadium	ppm	ASTM D5185m	0	0	0
Cadmium	ppm	ASTM D5185m	0	0	0

ADDITIVES

	method	limit/base	current	history1	history2
Boron	ppm	ASTM D5185m	2	2	4
Barium	ppm	ASTM D5185m	0	0	0
Molybdenum	ppm	ASTM D5185m	0	1	<1
Manganese	ppm	ASTM D5185m	0	0	0
Magnesium	ppm	ASTM D5185m	0	1	<1
Calcium	ppm	ASTM D5185m	0	53	61
Phosphorus	ppm	ASTM D5185m	91	272	302
Zinc	ppm	ASTM D5185m	24	245	325
Sulfur	ppm	ASTM D5185m	2301	6578	8324

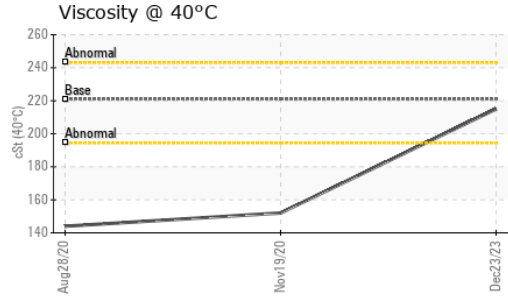
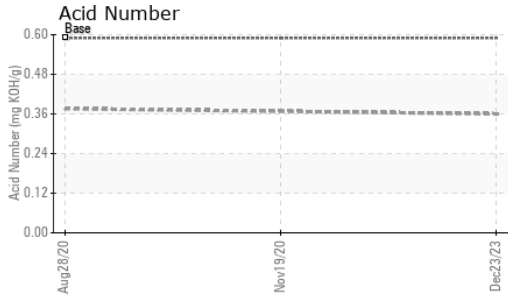
CONTAMINANTS

	method	limit/base	current	history1	history2
Silicon	ppm	ASTM D5185m >15	0	2	<1
Sodium	ppm	ASTM D5185m	0	<1	0
Potassium	ppm	ASTM D5185m >20	<1	9	0

FLUID DEGRADATION

	method	limit/base	current	history1	history2
Acid Number (AN)	mg KOH/g	ASTM D8045 0.59	0.36	---	0.376

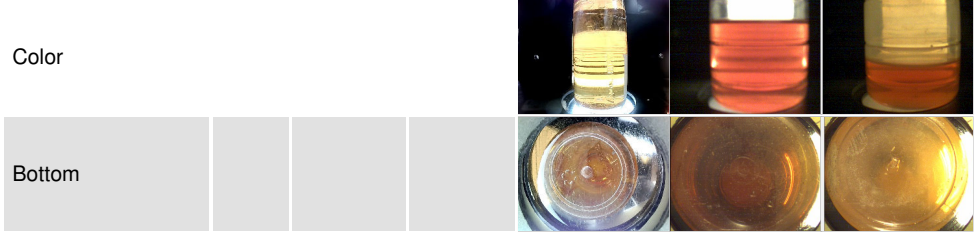
OIL ANALYSIS REPORT



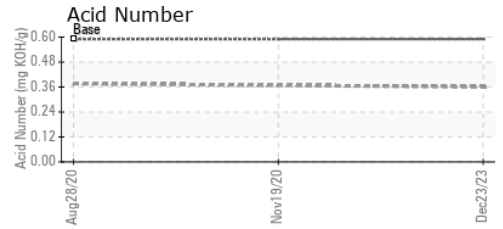
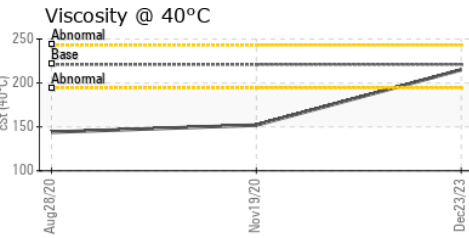
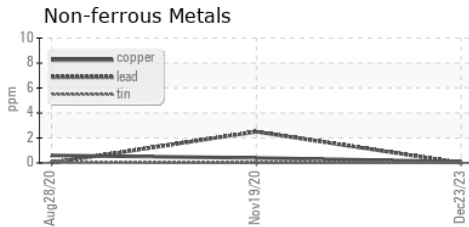
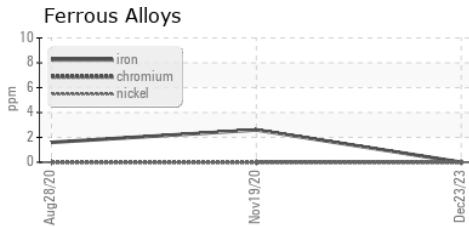
VISUAL	method	limit/base	current	history1	history2
White Metal	scalar	*Visual	NONE	NONE	NONE
Yellow Metal	scalar	*Visual	NONE	NONE	NONE
Precipitate	scalar	*Visual	NONE	NONE	NONE
Silt	scalar	*Visual	NONE	NONE	NONE
Debris	scalar	*Visual	NONE	NONE	NONE
Sand/Dirt	scalar	*Visual	NONE	NONE	NONE
Appearance	scalar	*Visual	NORML	NORML	NORML
Odor	scalar	*Visual	NORML	NORML	NORML
Emulsified Water	scalar	*Visual	NEG	NEG	NEG
Free Water	scalar	*Visual	NEG	NEG	NEG

FLUID PROPERTIES	method	limit/base	current	history1	history2
Visc @ 40°C	cSt	ASTM D445 221	215	▲ 152	▲ 144

SAMPLE IMAGES	method	limit/base	current	history1	history2
---------------	--------	------------	---------	----------	----------



GRAPHS



Certificate L2367

Laboratory : WearCheck USA - 501 Madison Ave., Cary, NC 27513
Sample No. : PCA0110392 **Recieved** : 11 Jan 2024
Lab Number : 06058271 **Diagnosed** : 14 Jan 2024
Unique Number : 10829653 **Diagnostician** : Don Baldrige
Test Package : IND 2

CERTAINTED CORP
 200 RONTHOR DR
 SOCIAL CIRCLE, GA
 US 30025

Contact: MARK KIRKPATRICK
 MARK.W.KIRKPATRICK@SAINT-GOBAIN.COM

To discuss this sample report, contact Customer Service at 1-800-237-1369.

* - Denotes test methods that are outside of the ISO 17025 scope of accreditation.

Statements of conformity to specifications are based on the simple acceptance decision rule (JCGM 106:2012)

F: (770)464-0878