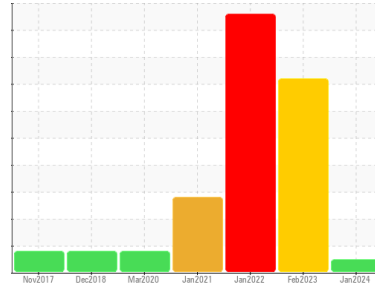


OIL ANALYSIS REPORT

Sample Rating Trend



NORMAL



Area
PLANT
Machine Id
DEISTER 00397
Component
Final Drive
Fluid
GEAR OIL ISO 220 (3 GAL)

DIAGNOSIS

Recommendation

Resample at the next service interval to monitor.

Wear

All component wear rates are normal.

Contamination

There is no indication of any contamination in the oil.

Fluid Condition

The AN level is acceptable for this fluid. The condition of the oil is suitable for further service.

SAMPLE INFORMATION		method	limit/base	current	history1	history2
Sample Number	Client Info			PCA0090535	WC0661522	WC0524344
Sample Date	Client Info			21 Jan 2024	02 Feb 2023	31 Jan 2022
Machine Age	hrs	Client Info		0	0	0
Oil Age	hrs	Client Info		0	0	0
Oil Changed	Client Info			N/A	N/A	N/A
Sample Status				NORMAL	SEVERE	SEVERE

CONTAMINATION		method	limit/base	current	history1	history2
Water	WC Method		>0.2	NEG	NEG	NEG

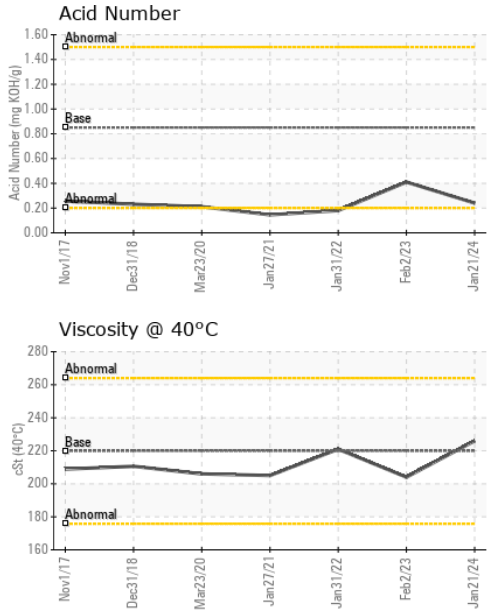
WEAR METALS		method	limit/base	current	history1	history2
Iron	ppm	ASTM D5185m	>500	299	84	▲ 1299
Chromium	ppm	ASTM D5185m	>10	2	<1	9
Nickel	ppm	ASTM D5185m	>10	<1	<1	4
Titanium	ppm	ASTM D5185m		1	<1	<1
Silver	ppm	ASTM D5185m		0	0	<1
Aluminum	ppm	ASTM D5185m	>25	13	7	7
Lead	ppm	ASTM D5185m	>25	4	5	▲ 54
Copper	ppm	ASTM D5185m	>50	75	● 219	● 1043
Tin	ppm	ASTM D5185m	>10	1	<1	▲ 8
Antimony	ppm	ASTM D5185m	>5	---	---	<1
Vanadium	ppm	ASTM D5185m		<1	0	<1
Cadmium	ppm	ASTM D5185m		0	0	<1

ADDITIVES		method	limit/base	current	history1	history2
Boron	ppm	ASTM D5185m	50	<1	0	6
Barium	ppm	ASTM D5185m	15	17	4	0
Molybdenum	ppm	ASTM D5185m	15	0	0	<1
Manganese	ppm	ASTM D5185m		5	5	13
Magnesium	ppm	ASTM D5185m	50	0	<1	0
Calcium	ppm	ASTM D5185m	50	3	4	2
Phosphorus	ppm	ASTM D5185m	350	111	205	107
Zinc	ppm	ASTM D5185m	100	41	102	714
Sulfur	ppm	ASTM D5185m	12500	11636	6767	8927

CONTAMINANTS		method	limit/base	current	history1	history2
Silicon	ppm	ASTM D5185m	>75	43	29	23
Sodium	ppm	ASTM D5185m		4	<1	<1
Potassium	ppm	ASTM D5185m	>20	4	0	0

FLUID DEGRADATION		method	limit/base	current	history1	history2
Acid Number (AN)	mg KOH/g	ASTM D8045	0.85	0.24	0.41	0.18

OIL ANALYSIS REPORT

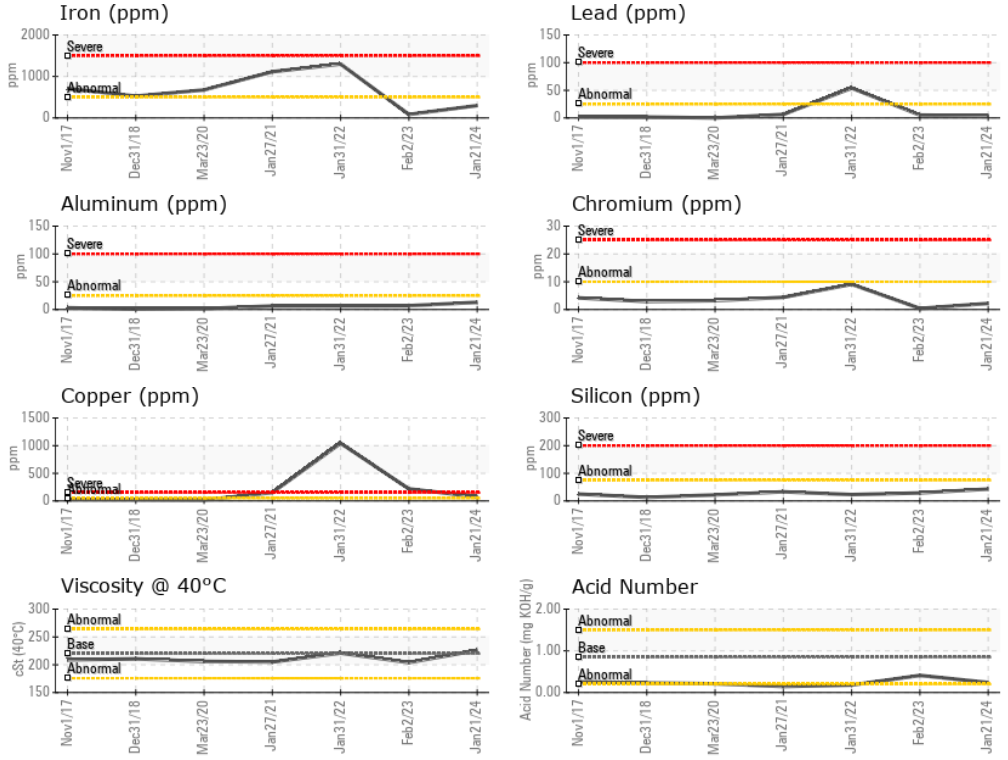


VISUAL	method	limit/base	current	history1	history2
White Metal	scalar	*Visual	NONE	LIGHT	NONE
Yellow Metal	scalar	*Visual	NONE	▲ MODER	▲ MODER
Precipitate	scalar	*Visual	NONE	NONE	NONE
Silt	scalar	*Visual	NONE	NONE	NONE
Debris	scalar	*Visual	NONE	NONE	NONE
Sand/Dirt	scalar	*Visual	NONE	NONE	NONE
Appearance	scalar	*Visual	NORML	NORML	NORML
Odor	scalar	*Visual	NORML	NORML	NORML
Emulsified Water	scalar	*Visual	>0.2	NEG	NEG
Free Water	scalar	*Visual		NEG	NEG

FLUID PROPERTIES	method	limit/base	current	history1	history2
Visc @ 40°C	cSt	ASTM D445	220	226	204

SAMPLE IMAGES	method	limit/base	current	history1	history2
Color				no image	no image
Bottom				no image	no image

GRAPHS



Certificate L2367

Laboratory : WearCheck USA - 501 Madison Ave., Cary, NC 27513
Sample No. : PCA0090535
Lab Number : 06067848
Unique Number : 10844525
Test Package : MOB 2
Received : 22 Jan 2024
Tested : 07 Feb 2024
Diagnosed : 07 Feb 2024 - Doug Bogart

LORUSSO BRISTOL STONE CORP
 611 PLEASANT ST
 WEYMOUTH, MA
 US 02189
 Contact: JIM STOTT

To discuss this sample report, contact Customer Service at 1-800-237-1369.

* - Denotes test methods that are outside of the ISO 17025 scope of accreditation.

Statements of conformity to specifications are based on the simple acceptance decision rule (JCGM 106:2012)

T:
 F: (781)337-8274