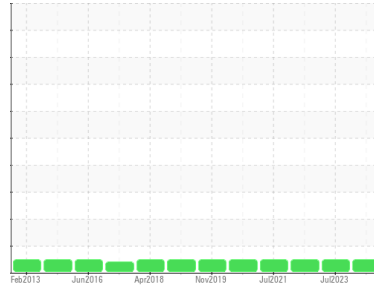


OIL ANALYSIS REPORT

Sample Rating Trend

NORMAL



Area
Expansion Bulk Silo Tanks
Machine Id
[Expansion Bulk Silo Tanks] TA-86007 TA-86007 - SILO 7
Component
Gearbox
Fluid
PETRO CANADA PURITY FG SYN GEAR ISO 220 (20 GAL)

DIAGNOSIS

Recommendation

Resample at the next service interval to monitor.

Wear

All component wear rates are normal.

Contamination

There is no indication of any contamination in the oil.

Fluid Condition

The AN level is acceptable for this fluid. The condition of the oil is suitable for further service.

SAMPLE INFORMATION

| | method | limit/base | current | history1 | history2 |
|---------------|-------------|-------------|--------------------|-------------|-------------|
| Sample Number | Client Info | | PCA0093716 | PCA0098857 | PCA0077244 |
| Sample Date | Client Info | | 29 Dec 2023 | 11 Jul 2023 | 15 Jan 2023 |
| Machine Age | hrs | Client Info | 0 | 0 | 0 |
| Oil Age | hrs | Client Info | 0 | 0 | 0 |
| Oil Changed | Client Info | | N/A | N/A | N/A |
| Sample Status | | | NORMAL | NORMAL | NORMAL |

CONTAMINATION

| | method | limit/base | current | history1 | history2 |
|-------|-----------|------------|------------|----------|----------|
| Water | WC Method | >0.2 | NEG | NEG | NEG |

WEAR METALS

| | method | limit/base | current | history1 | history2 |
|----------|------------|------------------|--------------|----------|----------|
| PQ | ASTM D8184 | | 12 | 12 | 6 |
| Iron | ppm | ASTM D5185m >200 | 2 | 2 | 2 |
| Chromium | ppm | ASTM D5185m >15 | <1 | 0 | 0 |
| Nickel | ppm | ASTM D5185m >15 | 0 | 0 | 0 |
| Titanium | ppm | ASTM D5185m | <1 | <1 | 0 |
| Silver | ppm | ASTM D5185m | 0 | 0 | 0 |
| Aluminum | ppm | ASTM D5185m >25 | 1 | <1 | 0 |
| Lead | ppm | ASTM D5185m >100 | 0 | 0 | 0 |
| Copper | ppm | ASTM D5185m >200 | <1 | 0 | 0 |
| Tin | ppm | ASTM D5185m >25 | <1 | 0 | <1 |
| Antimony | ppm | ASTM D5185m >5 | --- | --- | --- |
| Vanadium | ppm | ASTM D5185m | 0 | <1 | 0 |
| Cadmium | ppm | ASTM D5185m | 0 | 0 | 0 |

ADDITIVES

| | method | limit/base | current | history1 | history2 |
|------------|--------|-------------|--------------|----------|----------|
| Boron | ppm | ASTM D5185m | 0 | 0 | 0 |
| Barium | ppm | ASTM D5185m | 0 | 0 | 0 |
| Molybdenum | ppm | ASTM D5185m | <1 | 0 | 0 |
| Manganese | ppm | ASTM D5185m | 0 | 0 | <1 |
| Magnesium | ppm | ASTM D5185m | 0 | 0 | <1 |
| Calcium | ppm | ASTM D5185m | 0 | 6 | 0 |
| Phosphorus | ppm | ASTM D5185m | 566 | 626 | 577 |
| Zinc | ppm | ASTM D5185m | 7 | 5 | 12 |
| Sulfur | ppm | ASTM D5185m | 460 | 618 | 392 |

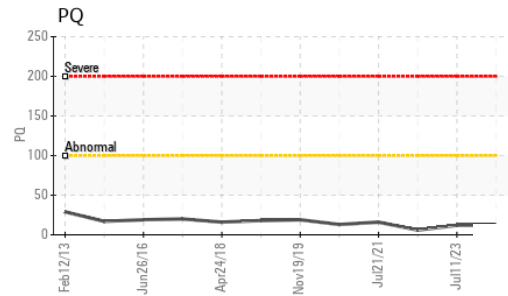
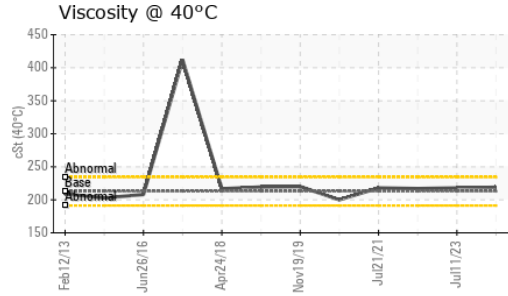
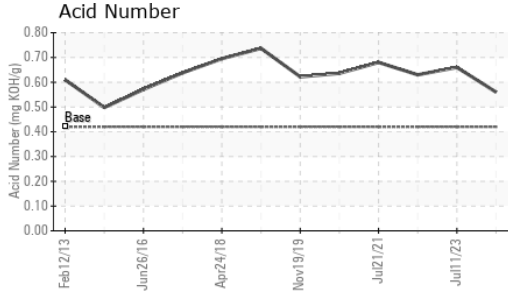
CONTAMINANTS

| | method | limit/base | current | history1 | history2 |
|-----------|--------|-----------------|--------------|----------|----------|
| Silicon | ppm | ASTM D5185m >50 | 16 | 6 | 7 |
| Sodium | ppm | ASTM D5185m | 0 | <1 | 0 |
| Potassium | ppm | ASTM D5185m >20 | <1 | 0 | 0 |

FLUID DEGRADATION

| | method | limit/base | current | history1 | history2 |
|------------------|----------|-----------------|-------------|----------|----------|
| Acid Number (AN) | mg KOH/g | ASTM D8045 0.42 | 0.56 | 0.66 | 0.63 |

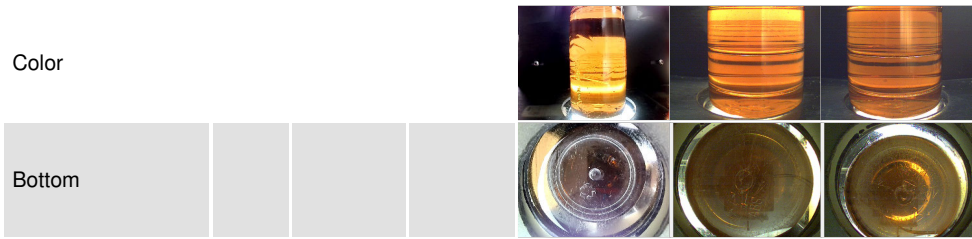
OIL ANALYSIS REPORT



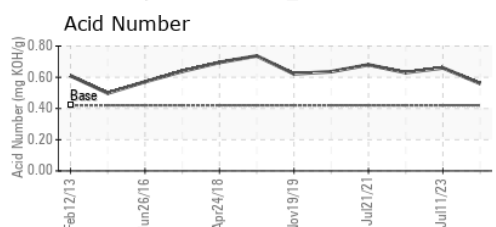
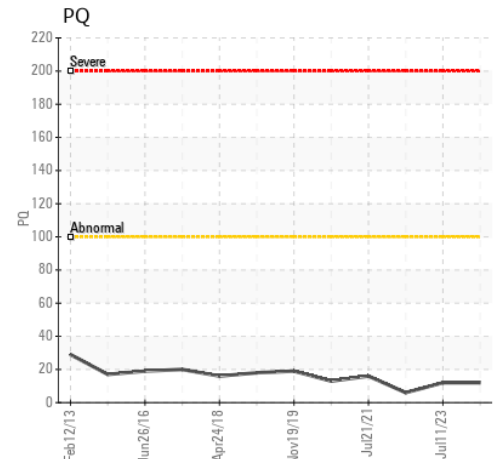
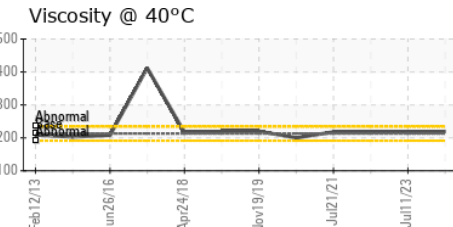
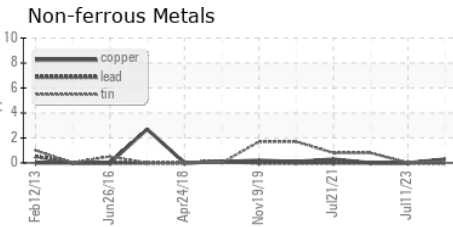
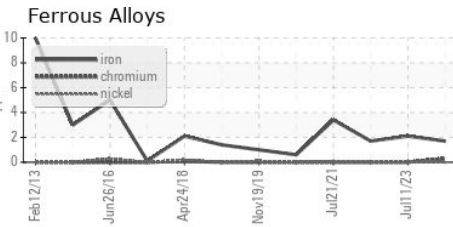
| VISUAL | method | limit/base | current | history1 | history2 |
|------------------|--------|------------|---------|----------|----------|
| White Metal | scalar | *Visual | NONE | NONE | LIGHT |
| Yellow Metal | scalar | *Visual | NONE | NONE | NONE |
| Precipitate | scalar | *Visual | NONE | NONE | NONE |
| Silt | scalar | *Visual | NONE | NONE | NONE |
| Debris | scalar | *Visual | NONE | LIGHT | NONE |
| Sand/Dirt | scalar | *Visual | NONE | NONE | NONE |
| Appearance | scalar | *Visual | NORML | NORML | NORML |
| Odor | scalar | *Visual | NORML | NORML | NORML |
| Emulsified Water | scalar | *Visual | >0.2 | NEG | NEG |
| Free Water | scalar | *Visual | | NEG | NEG |

| FLUID PROPERTIES | method | limit/base | current | history1 | history2 |
|------------------|--------|---------------|------------|----------|----------|
| Visc @ 40°C | cSt | ASTM D445 213 | 219 | 218 | 217 |

| SAMPLE IMAGES | method | limit/base | current | history1 | history2 |
|---------------|--------|------------|---------|----------|----------|
|---------------|--------|------------|---------|----------|----------|



GRAPHS



Certificate L2367

Laboratory : WearCheck USA - 501 Madison Ave., Cary, NC 27513
Sample No. : PCA0093716 **Received** : 24 Jan 2024
Lab Number : 06069639 **Diagnosed** : 25 Jan 2024
Unique Number : 10846316 **Diagnostician** : Wes Davis
Test Package : IND 2 (Additional Tests: PQ)

To discuss this sample report, contact Customer Service at 1-800-237-1369.

* - Denotes test methods that are outside of the ISO 17025 scope of accreditation.

Statements of conformity to specifications are based on the simple acceptance decision rule (JCGM 106:2012)

THE HERSHEY COMPANY
 WEST HERSHEY - TECHNICAL ASSURANCE, 1033 OLDE WEST CHOCOLATE
 HERSHEY, PA
 US 17033

Contact: CLINTON ZOHNER
 clintzohner@hersheys.com

T: (717)374-4846
 F: (717)374-4594