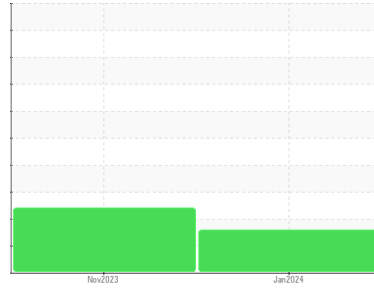


Machine Id  
**121462-5117**

Component  
**Diesel Engine**

Fluid  
**PETRO CANADA DURON SHP 10W30 (--- QTS)**



**DIAGNOSIS**

**▲ Recommendation**  
No corrective action is recommended at this time. Resample at the next service interval to monitor.

**▲ Wear**  
The aluminum level is abnormal. The copper level is abnormal. In the absence of other significant wear metals, suspect copper due to sources other than wear (i.e. cooling core).

**Contamination**  
There is no indication of any contamination in the oil.

**Fluid Condition**  
The BN result indicates that there is suitable alkalinity remaining in the oil. The condition of the oil is suitable for further service.

**SAMPLE INFORMATION**

	method	limit/base	current	history1	history2
Sample Number	Client Info		<b>PCA0117079</b>	PCA0110491	---
Sample Date	Client Info		<b>26 Jan 2024</b>	07 Nov 2023	---
Machine Age	mls	Client Info	<b>0</b>	0	---
Oil Age	mls	Client Info	<b>0</b>	0	---
Oil Changed	Client Info		<b>N/A</b>	N/A	---
Sample Status			<b>ABNORMAL</b>	ABNORMAL	---

**CONTAMINATION**

	method	limit/base	current	history1	history2
Fuel	WC Method	>5	<b>&lt;1.0</b>	<1.0	---
Water	WC Method	>0.2	<b>NEG</b>	NEG	---

**WEAR METALS**

	method	limit/base	current	history1	history2
Iron	ppm	ASTM D5185m >100	<b>91</b>	67	---
Chromium	ppm	ASTM D5185m >20	<b>2</b>	2	---
Nickel	ppm	ASTM D5185m >4	<b>&lt;1</b>	0	---
Titanium	ppm	ASTM D5185m	<b>&lt;1</b>	<1	---
Silver	ppm	ASTM D5185m >3	<b>0</b>	0	---
Aluminum	ppm	ASTM D5185m >20	<b>▲ 20</b>	18	---
Lead	ppm	ASTM D5185m >40	<b>3</b>	4	---
Copper	ppm	ASTM D5185m >330	<b>▲ 606</b>	165	---
Tin	ppm	ASTM D5185m >15	<b>4</b>	3	---
Vanadium	ppm	ASTM D5185m	<b>0</b>	<1	---
Cadmium	ppm	ASTM D5185m	<b>0</b>	0	---

**ADDITIVES**

	method	limit/base	current	history1	history2
Boron	ppm	ASTM D5185m 2	<b>21</b>	127	---
Barium	ppm	ASTM D5185m 0	<b>4</b>	0	---
Molybdenum	ppm	ASTM D5185m 50	<b>86</b>	23	---
Manganese	ppm	ASTM D5185m 0	<b>2</b>	2	---
Magnesium	ppm	ASTM D5185m 950	<b>1185</b>	240	---
Calcium	ppm	ASTM D5185m 1050	<b>1669</b>	1059	---
Phosphorus	ppm	ASTM D5185m 995	<b>1374</b>	828	---
Zinc	ppm	ASTM D5185m 1180	<b>1717</b>	1054	---
Sulfur	ppm	ASTM D5185m 2600	<b>3757</b>	2677	---

**CONTAMINANTS**

	method	limit/base	current	history1	history2
Silicon	ppm	ASTM D5185m >25	<b>20</b>	▲ 40	---
Sodium	ppm	ASTM D5185m	<b>0</b>	2	---
Potassium	ppm	ASTM D5185m >20	<b>4</b>	4	---
Glycol	%	*ASTM D2982	<b>NEG</b>	NEG	---

**INFRA-RED**

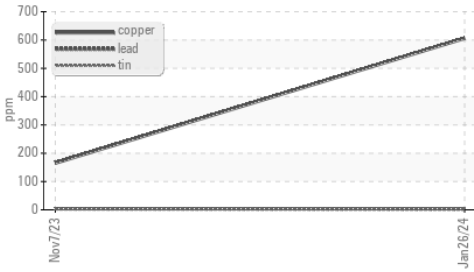
	method	limit/base	current	history1	history2
Soot %	%	*ASTM D7844 >3	<b>0.9</b>	0.4	---
Nitration	Abs/cm	*ASTM D7624 >20	<b>11.7</b>	7.9	---
Sulfation	Abs/.1mm	*ASTM D7415 >30	<b>22.1</b>	21.4	---

**FLUID DEGRADATION**

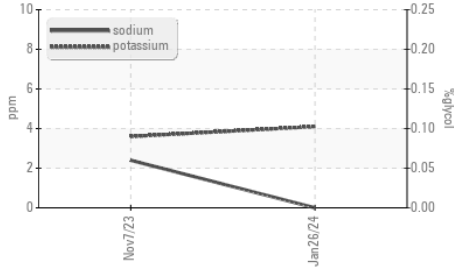
	method	limit/base	current	history1	history2
Oxidation	Abs/.1mm	*ASTM D7414 >25	<b>20.2</b>	18.2	---
Base Number (BN)	mg KOH/g	ASTM D2896	<b>7.6</b>	6.7	---

# OIL ANALYSIS REPORT

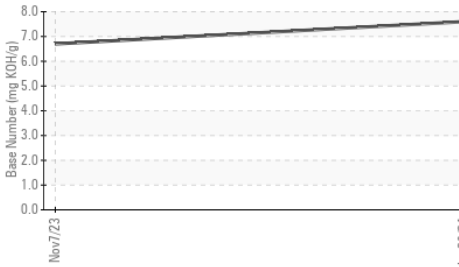
**▲ Non-ferrous Metals**



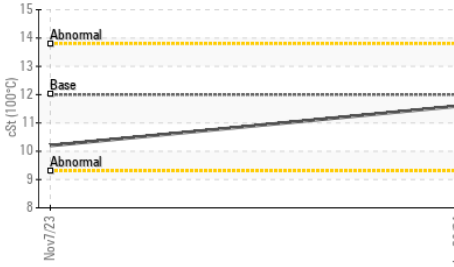
**● Glycol Contamination**



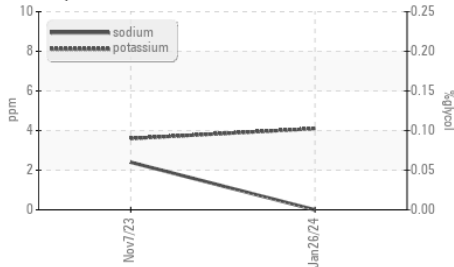
**Base Number**



**Viscosity @ 100°C**



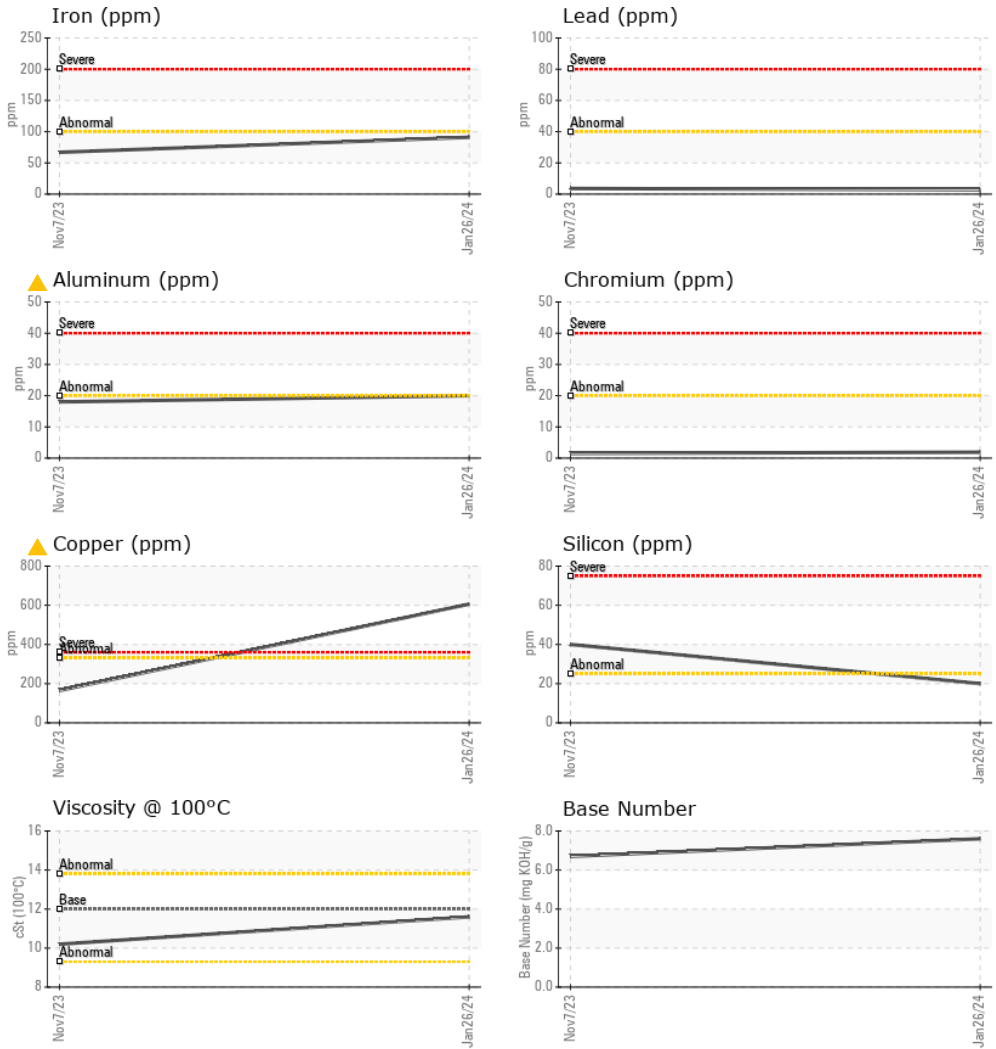
**Glycol Contamination**



VISUAL	method	limit/base	current	history1	history2
White Metal	scalar	*Visual	NONE	NONE	---
Yellow Metal	scalar	*Visual	NONE	NONE	---
Precipitate	scalar	*Visual	NONE	NONE	---
Silt	scalar	*Visual	NONE	NONE	---
Debris	scalar	*Visual	NONE	NONE	---
Sand/Dirt	scalar	*Visual	NONE	NONE	---
Appearance	scalar	*Visual	NORML	NORML	---
Odor	scalar	*Visual	NORML	NORML	---
Emulsified Water	scalar	*Visual	>0.2	NEG	---
Free Water	scalar	*Visual		NEG	---

FLUID PROPERTIES	method	limit/base	current	history1	history2
Visc @ 100°C	cSt	ASTM D445	12.00	11.6	10.2

**GRAPHS**



Certificate L2367

**Laboratory** : WearCheck USA - 501 Madison Ave., Cary, NC 27513  
**Sample No.** : PCA0117079 **Received** : 02 Feb 2024  
**Lab Number** : 06078936 **Tested** : 06 Feb 2024  
**Unique Number** : 10861027 **Diagnosed** : 06 Feb 2024 - Jonathan Hester  
**Test Package** : MOB 1 ( Additional Tests: Glycol, TBN )

**MILLER TRUCK LEASING #119**  
 39 INDUSTRIAL AVE  
 HASBROUCK HEIGHTS, NJ  
 US 07604  
 Contact: MIKE LONGETTE  
 mlongette@millertransgroup.com

To discuss this sample report, contact Customer Service at 1-800-237-1369.

\* - Denotes test methods that are outside of the ISO 17025 scope of accreditation.

Statements of conformity to specifications are based on the simple acceptance decision rule (JCGM 106:2012)

T: (201)528-7053