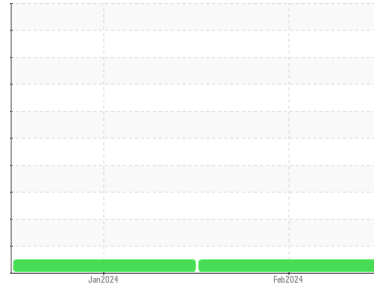


OIL ANALYSIS REPORT

Sample Rating Trend

NORMAL



Area
ELEVATOR DISTRIBUTION LEG
Machine Id
DISTRIBUTION LEG

Component
Gearbox
Fluid
HYDROTEX Ultra-Kleen ISO 220 (9 GAL)

DIAGNOSIS

Recommendation

Resample at the next service interval to monitor. (Customer Sample Comment: February sample)

Wear

All component wear rates are normal.

Contamination

There is no indication of any contamination in the oil.

Fluid Condition

The AN level is acceptable for this fluid. The condition of the oil is suitable for further service.

SAMPLE INFORMATION		method	limit/base	current	history1	history2
Sample Number	Client Info			PCA0113069	PCA0113080	---
Sample Date	Client Info			15 Feb 2024	18 Jan 2024	---
Machine Age	hrs	Client Info		0	0	---
Oil Age	hrs	Client Info		0	0	---
Oil Changed	Client Info			N/A	N/A	---
Sample Status				NORMAL	NORMAL	---

CONTAMINATION		method	limit/base	current	history1	history2
Water	WC Method		>0.2	NEG	NEG	---

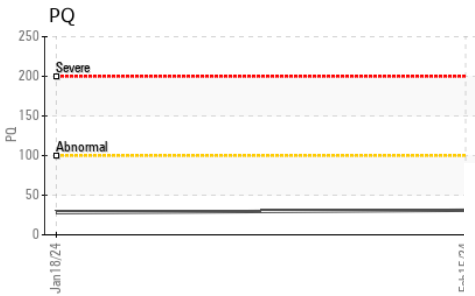
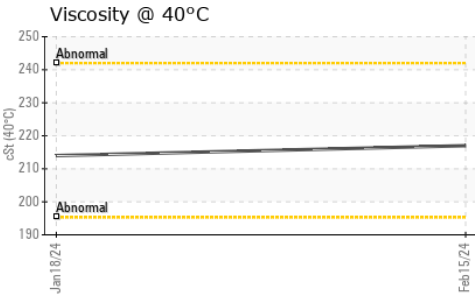
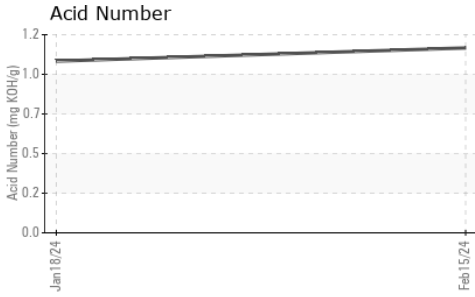
WEAR METALS		method	limit/base	current	history1	history2
PQ		ASTM D8184		31	28	---
Iron	ppm	ASTM D5185m	>200	21	17	---
Chromium	ppm	ASTM D5185m	>15	0	0	---
Nickel	ppm	ASTM D5185m	>15	0	0	---
Titanium	ppm	ASTM D5185m		0	0	---
Silver	ppm	ASTM D5185m		0	0	---
Aluminum	ppm	ASTM D5185m	>25	0	0	---
Lead	ppm	ASTM D5185m	>100	0	0	---
Copper	ppm	ASTM D5185m	>200	<1	0	---
Tin	ppm	ASTM D5185m	>25	<1	<1	---
Vanadium	ppm	ASTM D5185m		0	0	---
Cadmium	ppm	ASTM D5185m		0	0	---

ADDITIVES		method	limit/base	current	history1	history2
Boron	ppm	ASTM D5185m		111	47	---
Barium	ppm	ASTM D5185m		0	0	---
Molybdenum	ppm	ASTM D5185m		0	0	---
Manganese	ppm	ASTM D5185m		<1	<1	---
Magnesium	ppm	ASTM D5185m		0	<1	---
Calcium	ppm	ASTM D5185m		0	1	---
Phosphorus	ppm	ASTM D5185m		490	458	---
Zinc	ppm	ASTM D5185m		0	0	---
Sulfur	ppm	ASTM D5185m		10689	9350	---

CONTAMINANTS		method	limit/base	current	history1	history2
Silicon	ppm	ASTM D5185m	>50	47	41	---
Sodium	ppm	ASTM D5185m		<1	0	---
Potassium	ppm	ASTM D5185m	>20	0	0	---

FLUID DEGRADATION		method	limit/base	current	history1	history2
Acid Number (AN)	mg KOH/g	ASTM D8045		1.12	1.04	---

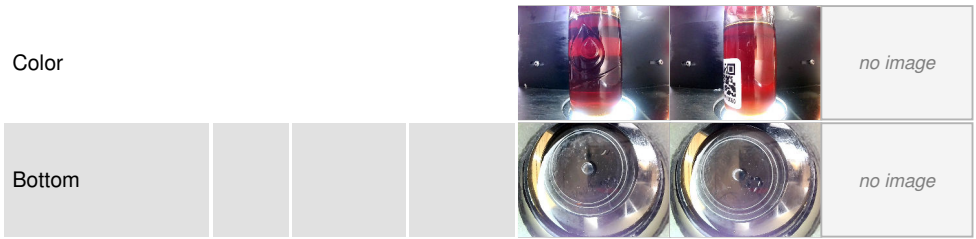
OIL ANALYSIS REPORT



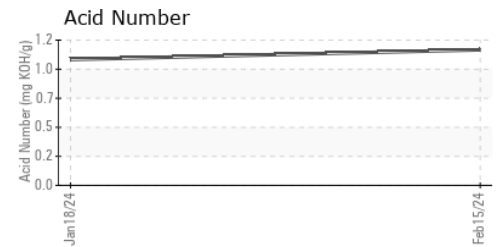
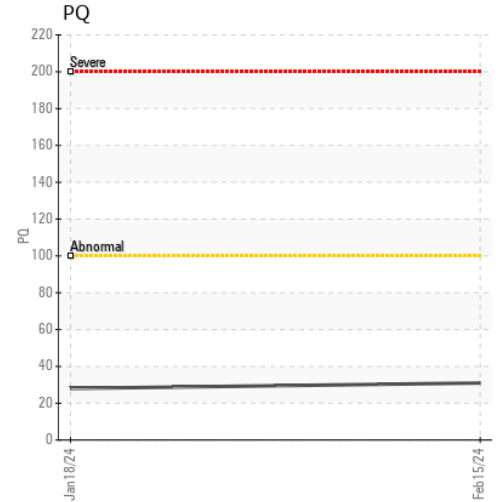
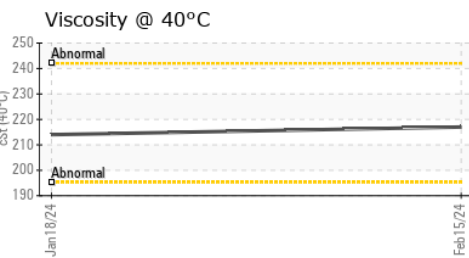
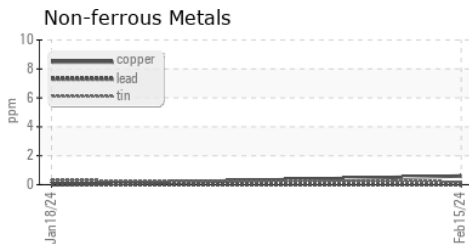
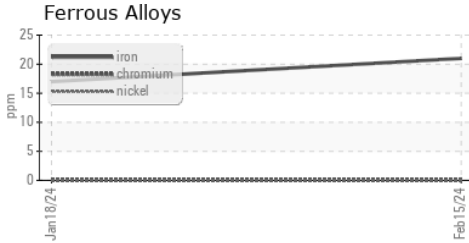
VISUAL	method	limit/base	current	history1	history2	
White Metal	scalar	*Visual	NONE	NONE	LIGHT	---
Yellow Metal	scalar	*Visual	NONE	NONE	NONE	---
Precipitate	scalar	*Visual	NONE	NONE	NONE	---
Silt	scalar	*Visual	NONE	NONE	NONE	---
Debris	scalar	*Visual	NONE	NONE	NONE	---
Sand/Dirt	scalar	*Visual	NONE	NONE	NONE	---
Appearance	scalar	*Visual	NORML	NORML	NORML	---
Odor	scalar	*Visual	NORML	NORML	NORML	---
Emulsified Water	scalar	*Visual	>0.2	NEG	NEG	---
Free Water	scalar	*Visual		NEG	NEG	---

FLUID PROPERTIES	method	limit/base	current	history1	history2
Visc @ 40°C	cSt	ASTM D445	217	214	---

SAMPLE IMAGES	method	limit/base	current	history1	history2
---------------	--------	------------	---------	----------	----------



GRAPHS



Certificate L2367

Laboratory : WearCheck USA - 501 Madison Ave., Cary, NC 27513
Sample No. : PCA0113069
Lab Number : **06095781**
Unique Number : 10888634
Test Package : PLANT

Ardent Mills - Stockton
 3939 Producers Dr
 Stockton, CA
 US 95206
 Contact: Noel Garcia
 noel.garcia@ardentmills.com

To discuss this sample report, contact Customer Service at 1-800-237-1369.

* - Denotes test methods that are outside of the ISO 17025 scope of accreditation.

Statements of conformity to specifications are based on the simple acceptance decision rule (JCGM 106:2012)

T:
F: