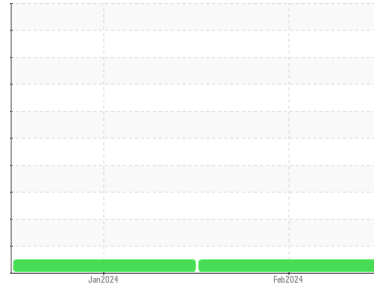


OIL ANALYSIS REPORT

Sample Rating Trend

NORMAL



Area
ELEVATOR COLLECTION DRAG
Machine Id
COLLECTION DRAG

Component
Gearbox
Fluid
HYDROTEX Ultra-Kleen ISO 220 (13 QTS)

DIAGNOSIS

Recommendation

Resample at the next service interval to monitor. (Customer Sample Comment: February sample)

Wear

All component wear rates are normal.

Contamination

There is no indication of any contamination in the oil.

Fluid Condition

The AN level is acceptable for this fluid. The condition of the oil is suitable for further service.

SAMPLE INFORMATION

method	limit/base	current	history1	history2
Sample Number	Client Info	PCA0113066	PCA0113078	---
Sample Date	Client Info	15 Feb 2024	18 Jan 2024	---
Machine Age	hrs	Client Info	0	0
Oil Age	hrs	Client Info	0	0
Oil Changed	Client Info	N/A	N/A	---
Sample Status		NORMAL	NORMAL	---

CONTAMINATION

method	limit/base	current	history1	history2
Water	WC Method >0.2	NEG	NEG	---

WEAR METALS

method	limit/base	current	history1	history2
PQ	ASTM D8184	35	33	---
Iron	ppm	ASTM D5185m >200	45	45
Chromium	ppm	ASTM D5185m >15	0	0
Nickel	ppm	ASTM D5185m >15	0	0
Titanium	ppm	ASTM D5185m	0	<1
Silver	ppm	ASTM D5185m	0	0
Aluminum	ppm	ASTM D5185m >25	4	4
Lead	ppm	ASTM D5185m >100	0	0
Copper	ppm	ASTM D5185m >200	<1	0
Tin	ppm	ASTM D5185m >25	<1	<1
Vanadium	ppm	ASTM D5185m	0	0
Cadmium	ppm	ASTM D5185m	0	0

ADDITIVES

method	limit/base	current	history1	history2
Boron	ppm	ASTM D5185m	82	78
Barium	ppm	ASTM D5185m	0	0
Molybdenum	ppm	ASTM D5185m	0	0
Manganese	ppm	ASTM D5185m	<1	<1
Magnesium	ppm	ASTM D5185m	0	<1
Calcium	ppm	ASTM D5185m	0	1
Phosphorus	ppm	ASTM D5185m	464	432
Zinc	ppm	ASTM D5185m	0	0
Sulfur	ppm	ASTM D5185m	11139	9571

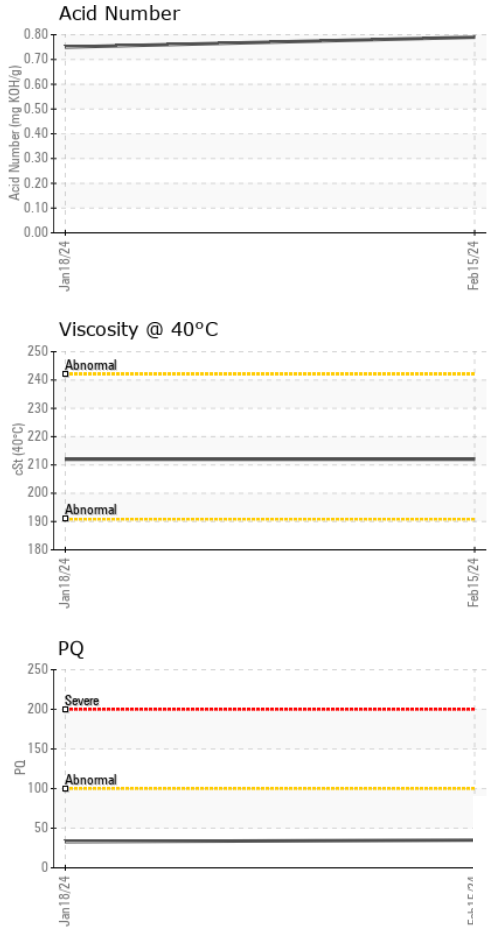
CONTAMINANTS

method	limit/base	current	history1	history2
Silicon	ppm	ASTM D5185m >50	10	10
Sodium	ppm	ASTM D5185m	<1	<1
Potassium	ppm	ASTM D5185m >20	<1	0

FLUID DEGRADATION

method	limit/base	current	history1	history2
Acid Number (AN)	mg KOH/g	ASTM D8045	0.79	0.75

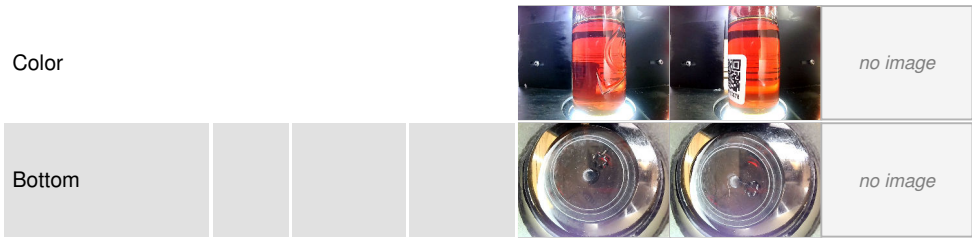
OIL ANALYSIS REPORT



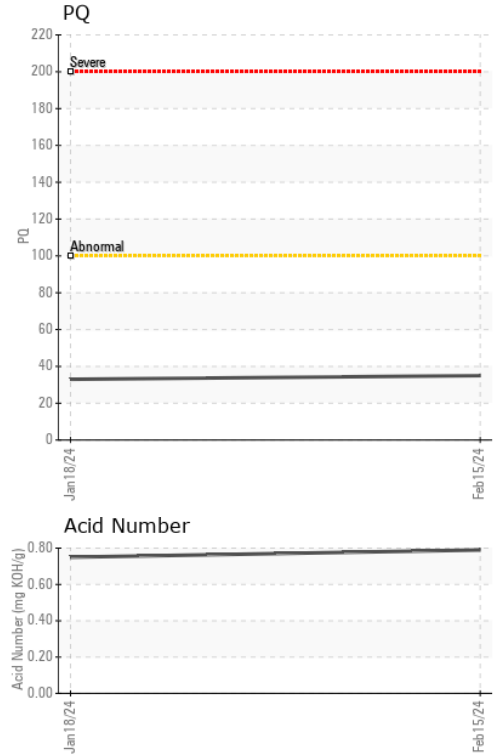
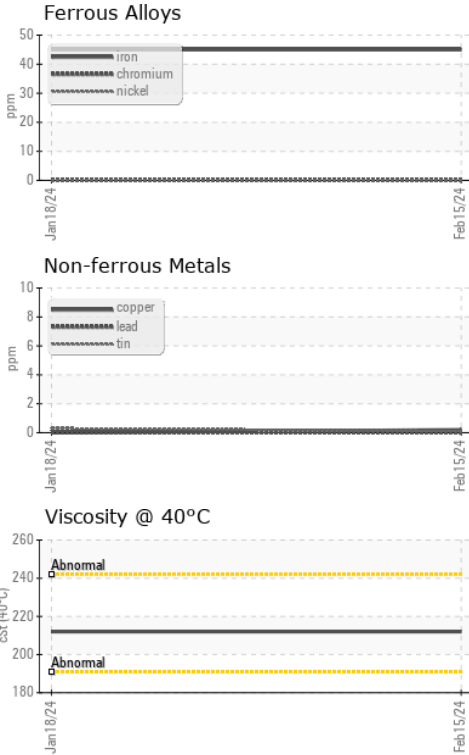
VISUAL	method	limit/base	current	history1	history2
White Metal	scalar	*Visual	NONE	NONE	---
Yellow Metal	scalar	*Visual	NONE	NONE	---
Precipitate	scalar	*Visual	NONE	NONE	---
Silt	scalar	*Visual	NONE	NONE	---
Debris	scalar	*Visual	NONE	NONE	---
Sand/Dirt	scalar	*Visual	NONE	NONE	---
Appearance	scalar	*Visual	NORML	NORML	---
Odor	scalar	*Visual	NORML	NORML	---
Emulsified Water	scalar	*Visual	>0.2	NEG	---
Free Water	scalar	*Visual		NEG	---

FLUID PROPERTIES	method	limit/base	current	history1	history2
Visc @ 40°C	cSt	ASTM D445	212	212	---

SAMPLE IMAGES	method	limit/base	current	history1	history2
---------------	--------	------------	---------	----------	----------



GRAPHS



Certificate L2367

Laboratory : WearCheck USA - 501 Madison Ave., Cary, NC 27513
Sample No. : PCA0113066 **Received** : 21 Feb 2024
Lab Number : **06095785** **Tested** : 22 Feb 2024
Unique Number : 10888638 **Diagnosed** : 22 Feb 2024 - Sean Felton
Test Package : PLANT

Ardent Mills - Stockton
 3939 Producers Dr
 Stockton, CA
 US 95206
 Contact: Noel Garcia
 noel.garcia@ardentmills.com

To discuss this sample report, contact Customer Service at 1-800-237-1369.

* - Denotes test methods that are outside of the ISO 17025 scope of accreditation.

Statements of conformity to specifications are based on the simple acceptance decision rule (JCGM 106:2012)