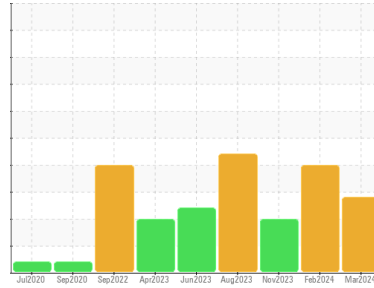


OIL ANALYSIS REPORT

Sample Rating Trend



WATER



Area
[98827160]
 Machine Id
C PRESS VACUUM MIXER
 Component
Gearbox
 Fluid
GEAR OIL ISO 320 (--- GAL)

DIAGNOSIS

Recommendation

We advise that you check for the source of water entry. The oil change at the time of sampling has been noted. We recommend an early resample to monitor this condition. We were unable to perform a particle count due to a high concentration of particles present in this sample.

Wear

All component wear rates are normal.

Contamination

Moderate concentration of visible dirt/debris present in the oil. There is a high amount of visible silt present in the sample. There is a moderate concentration of water present in the oil.

Fluid Condition

The AN level is acceptable for this fluid.

SAMPLE INFORMATION		method	limit/base	current	history1	history2
Sample Number	Client Info			PCA0117993	PCA0111840	PCA0083735
Sample Date	Client Info			14 Mar 2024	10 Feb 2024	04 Nov 2023
Machine Age	hrs	Client Info		0	0	0
Oil Age	hrs	Client Info		0	0	0
Oil Changed	Client Info			Changed	Changed	Changed
Sample Status				ABNORMAL	ABNORMAL	ABNORMAL

WEAR METALS		method	limit/base	current	history1	history2
Iron	ppm	ASTM D5185m	>200	115	38	151
Chromium	ppm	ASTM D5185m	>15	<1	<1	0
Nickel	ppm	ASTM D5185m	>15	<1	0	0
Titanium	ppm	ASTM D5185m		<1	<1	<1
Silver	ppm	ASTM D5185m		0	0	0
Aluminum	ppm	ASTM D5185m	>25	1	0	<1
Lead	ppm	ASTM D5185m	>100	<1	0	0
Copper	ppm	ASTM D5185m	>200	<1	0	<1
Tin	ppm	ASTM D5185m	>25	<1	0	0
Vanadium	ppm	ASTM D5185m		<1	0	0
Cadmium	ppm	ASTM D5185m		<1	0	0

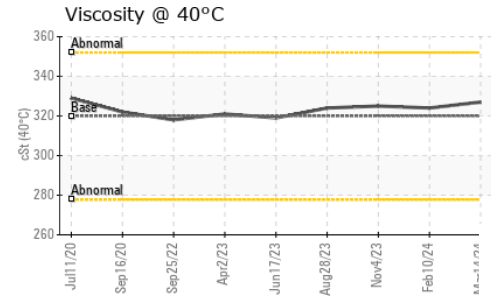
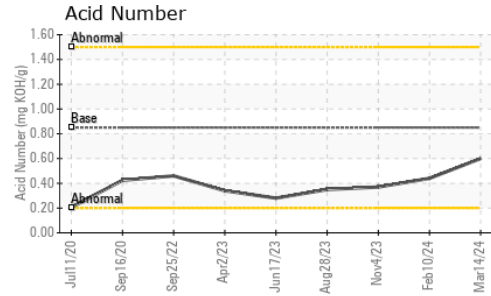
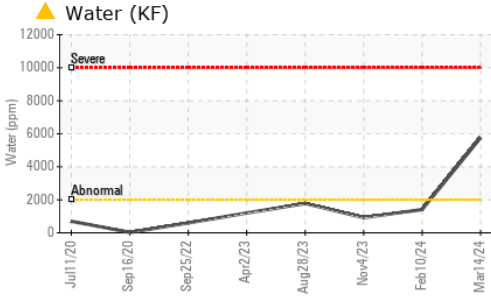
ADDITIVES		method	limit/base	current	history1	history2
Boron	ppm	ASTM D5185m	50	0	0	0
Barium	ppm	ASTM D5185m	15	0	0	0
Molybdenum	ppm	ASTM D5185m	15	<1	0	0
Manganese	ppm	ASTM D5185m		1	<1	2
Magnesium	ppm	ASTM D5185m	50	<1	1	0
Calcium	ppm	ASTM D5185m	50	3	2	0
Phosphorus	ppm	ASTM D5185m	350	521	506	517
Zinc	ppm	ASTM D5185m	100	2	0	0
Sulfur	ppm	ASTM D5185m	12500	1280	1371	1352

CONTAMINANTS		method	limit/base	current	history1	history2
Silicon	ppm	ASTM D5185m	>50	39	13	26
Sodium	ppm	ASTM D5185m		<1	0	6
Potassium	ppm	ASTM D5185m	>20	2	0	3
Water	%	ASTM D6304	>0.2	▲ 0.576	▲ 0.141	0.092
ppm Water	ppm	ASTM D6304	>2000	▲ 5760	▲ 1410	920

FLUID CLEANLINESS		method	limit/base	current	history1	history2
Particles >4µm		ASTM D7647	>1300	---	---	▲ 266579
Particles >6µm		ASTM D7647	>320	---	---	▲ 202304
Particles >14µm		ASTM D7647	>80	---	---	▲ 16471
Particles >21µm		ASTM D7647	>20	---	---	▲ 666
Particles >38µm		ASTM D7647	>4	---	---	2
Particles >71µm		ASTM D7647	>3	---	---	1
Oil Cleanliness		ISO 4406 (c)	>17/15/13	---	---	▲ 25/25/21

FLUID DEGRADATION		method	limit/base	current	history1	history2
Acid Number (AN)	mg KOH/g	ASTM D8045	0.85	0.60	0.44	0.37

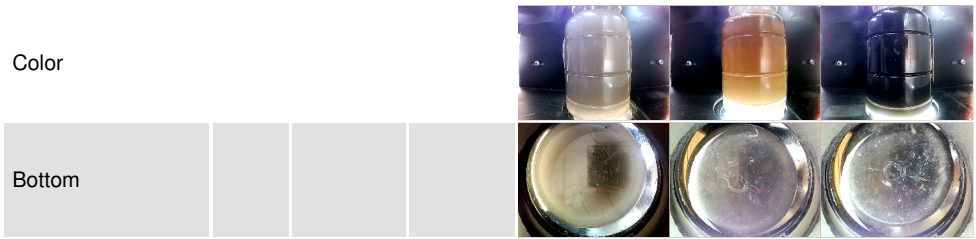
OIL ANALYSIS REPORT



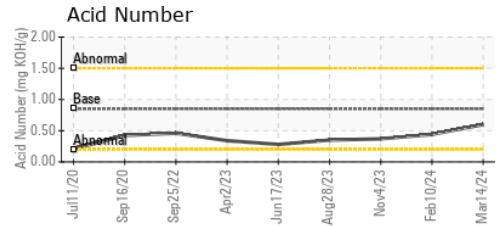
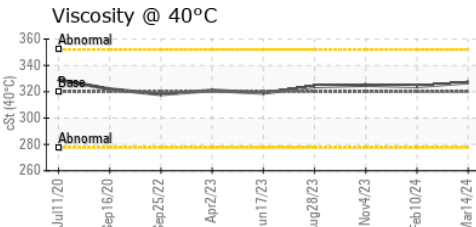
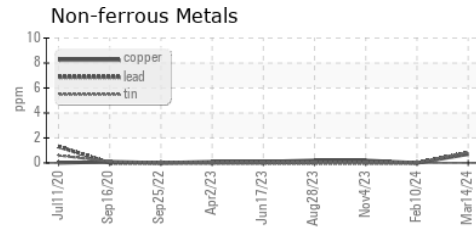
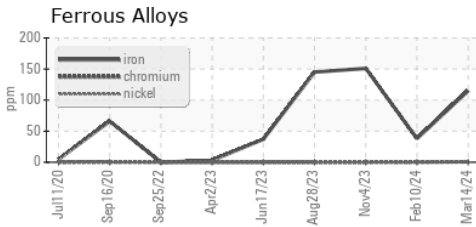
PARAMETER	method	limit/base	current	history1	history2
White Metal	scalar	*Visual	NONE	NONE	NONE
Yellow Metal	scalar	*Visual	NONE	NONE	NONE
Precipitate	scalar	*Visual	NONE	NONE	NONE
Silt	scalar	*Visual	▲ HEAVY	▲ MODER	NONE
Debris	scalar	*Visual	▲ MODER	NONE	NONE
Sand/Dirt	scalar	*Visual	NONE	NONE	NONE
Appearance	scalar	*Visual	NORML	NORML	NORML
Odor	scalar	*Visual	NORML	NORML	NORML
Emulsified Water	scalar	*Visual	>0.2	▲ 0.2%	0.2%
Free Water	scalar	*Visual		▲ NEG	2.0

PARAMETER	method	limit/base	current	history1	history2
Visc @ 40°C	cSt	ASTM D445	320	327	324

SAMPLE IMAGES



GRAPHS



Certificate L2367

Laboratory : WearCheck USA - 501 Madison Ave., Cary, NC 27513
Sample No. : PCA0117993
Lab Number : 06129389
Unique Number : 10943540
Test Package : IND 2 (Additional Tests: KF, PriCount)

KraftHeinz - Springfield - Plant 8311 PCA
 2035 E BENNETT
 SPRINGFIELD, MO
 US 65804
 Contact: Service Manager

To discuss this sample report, contact Customer Service at 1-800-237-1369.

* - Denotes test methods that are outside of the ISO 17025 scope of accreditation.

Statements of conformity to specifications are based on the simple acceptance decision rule (JCGM 106:2012)

T:
F: