

Area
ARMOR INOX [98922253]
Machine Id
KR-GR-000823 - DUOFLEX A2 CRANE (S/N ARMOR-INOX)
Component
Hoist
Fluid
MOBIL GLYGOYLE HE ISO 460 (--- GAL)

DIAGNOSIS

Recommendation

We recommend you service the filters on this component if applicable. Resample at the next service interval to monitor. (Customer Sample Comment: 98922253)

Wear

All component wear rates are normal.

Contamination

There is a high amount of particulates present in the oil.

Fluid Condition

The AN level is acceptable for this fluid. The condition of the oil is acceptable for the time in service.

SAMPLE INFORMATION

method	limit/base	current	history1	history2
Sample Number	Client Info	PCA0114157	PCA0114833	PCA0106042
Sample Date	Client Info	17 Apr 2024	02 Jan 2024	22 Oct 2023
Machine Age	hrs	0	0	0
Oil Age	hrs	0	0	0
Oil Changed	Client Info	Not Chngd	N/A	N/A
Sample Status		ABNORMAL	ABNORMAL	NORMAL

CONTAMINATION

method	limit/base	current	history1	history2
Water	WC Method	NEG	NEG	NEG

WEAR METALS

method	limit/base	current	history1	history2		
Iron	ppm	ASTM D5185m	>20	<1	1	0
Chromium	ppm	ASTM D5185m	>20	0	<1	0
Nickel	ppm	ASTM D5185m	>20	0	0	1
Titanium	ppm	ASTM D5185m		<1	<1	0
Silver	ppm	ASTM D5185m		0	0	<1
Aluminum	ppm	ASTM D5185m	>20	0	1	1
Lead	ppm	ASTM D5185m	>20	0	0	<1
Copper	ppm	ASTM D5185m	>20	<1	0	0
Tin	ppm	ASTM D5185m	>20	0	<1	<1
Vanadium	ppm	ASTM D5185m		<1	0	0
Cadmium	ppm	ASTM D5185m		0	0	0

ADDITIVES

method	limit/base	current	history1	history2		
Boron	ppm	ASTM D5185m		0	<1	4
Barium	ppm	ASTM D5185m		0	10	0
Molybdenum	ppm	ASTM D5185m		62	61	72
Manganese	ppm	ASTM D5185m		0	0	<1
Magnesium	ppm	ASTM D5185m		<1	<1	6
Calcium	ppm	ASTM D5185m		16	15	23
Phosphorus	ppm	ASTM D5185m		492	557	598
Zinc	ppm	ASTM D5185m		2	<1	2
Sulfur	ppm	ASTM D5185m		5177	3941	5016

CONTAMINANTS

method	limit/base	current	history1	history2		
Silicon	ppm	ASTM D5185m	>15	2	2	3
Sodium	ppm	ASTM D5185m		0	0	<1
Potassium	ppm	ASTM D5185m	>20	<1	1	2

FLUID CLEANLINESS

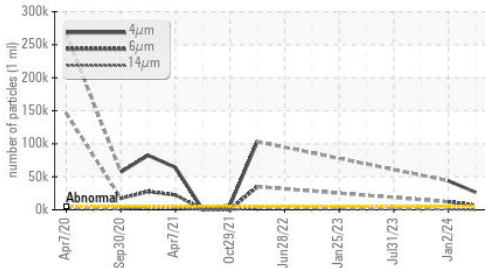
method	limit/base	current	history1	history2	
Particles >4µm	ASTM D7647	>5000	▲ 26433	▲ 43970	---
Particles >6µm	ASTM D7647	>1300	▲ 6662	▲ 12163	---
Particles >14µm	ASTM D7647	>160	▲ 270	▲ 793	---
Particles >21µm	ASTM D7647	>40	33	▲ 132	---
Particles >38µm	ASTM D7647	>10	2	3	---
Particles >71µm	ASTM D7647	>3	1	1	---
Oil Cleanliness	ISO 4406 (c)	>19/17/14	▲ 22/20/15	▲ 23/21/17	---

FLUID DEGRADATION

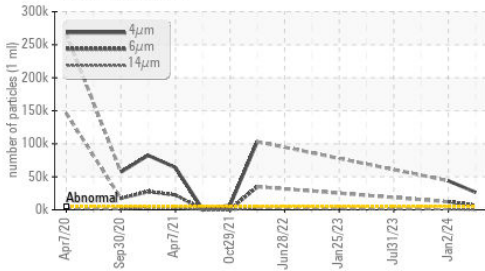
method	limit/base	current	history1	history2		
Acid Number (AN)	mg KOH/g	ASTM D8045		0.97	0.87	0.64

OIL ANALYSIS REPORT

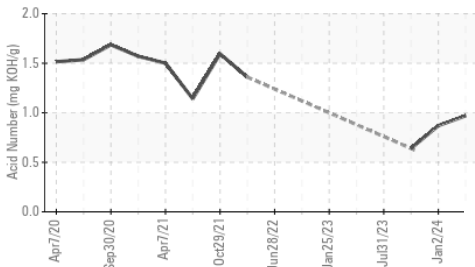
▲ Particle Trend



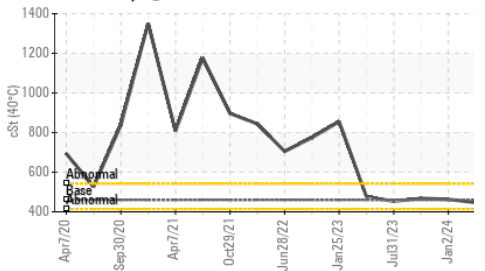
▲ Particle Trend



Acid Number



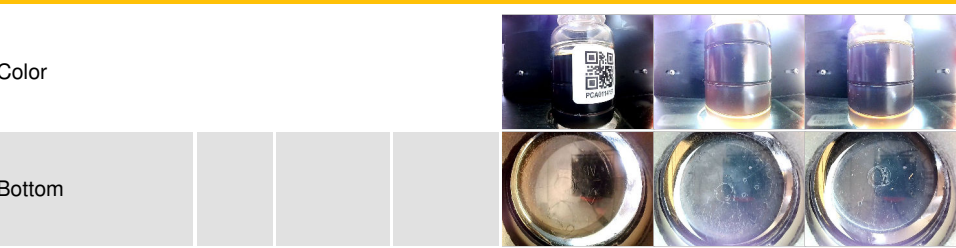
Viscosity @ 40°C



VISUAL	method	limit/base	current	history1	history2
White Metal	scalar	*Visual	NONE	NONE	NONE
Yellow Metal	scalar	*Visual	NONE	NONE	NONE
Precipitate	scalar	*Visual	NONE	NONE	NONE
Silt	scalar	*Visual	NONE	NONE	NONE
Debris	scalar	*Visual	NONE	LIGHT	NONE
Sand/Dirt	scalar	*Visual	NONE	NONE	NONE
Appearance	scalar	*Visual	NORML	NORML	NORML
Odor	scalar	*Visual	NORML	NORML	NORML
Emulsified Water	scalar	*Visual	>0.05	NEG	NEG
Free Water	scalar	*Visual		NEG	NEG

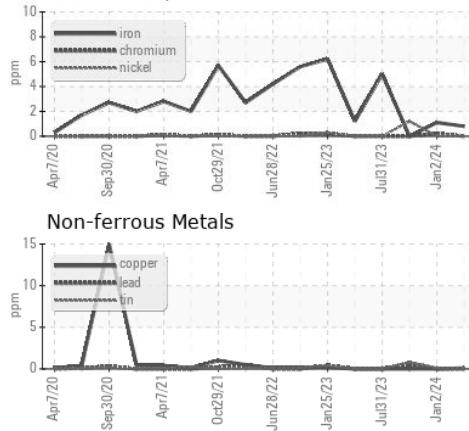
FLUID PROPERTIES	method	limit/base	current	history1	history2
Visc @ 40°C	cSt	ASTM D445	460	447	463

SAMPLE IMAGES

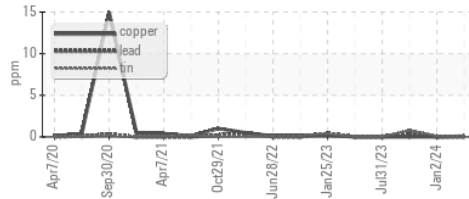


GRAPHS

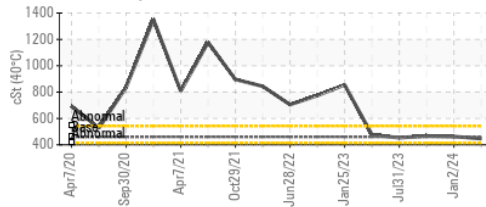
Ferrous Alloys



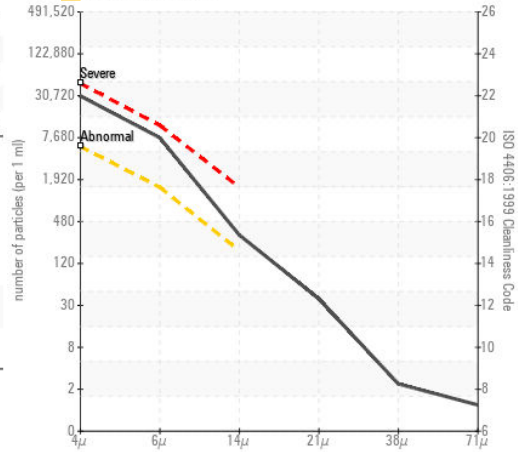
Non-ferrous Metals



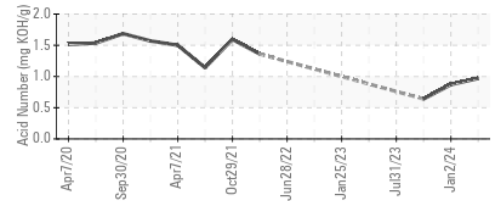
Viscosity @ 40°C



▲ Particle Count



Acid Number



Certificate L2367

Laboratory : WearCheck USA - 501 Madison Ave., Cary, NC 27513
Sample No. : PCA0114157
Lab Number : 06155888
Unique Number : 10991311
Test Package : IND 2

Received : 22 Apr 2024
Tested : 23 Apr 2024
Diagnosed : 24 Apr 2024 - Don Baldrige

KraftHeinz - Kirksville - Plant 8333 PCA
 2504 INDUSTRIAL DR
 KIRKSVILLE, MO
 US 63501

Contact: WALLACE WARD
 wallace.ward@kraftheinzcompany.com

T: (660)627-1031

F: (660)627-5887

To discuss this sample report, contact Customer Service at 1-800-237-1369.

* - Denotes test methods that are outside of the ISO 17025 scope of accreditation.

Statements of conformity to specifications are based on the simple acceptance decision rule (JCGM 106:2012)