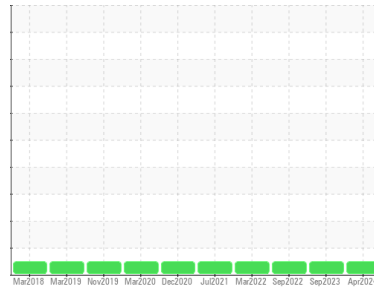


# OIL ANALYSIS REPORT

## Sample Rating Trend



**NORMAL**



Area

**LINE 3 [908199540]**

Machine Id

**[LINE 3] TA-31308 L3 AGITATOR TANK MILK STORAGE TA-31308**

Component

**Gearbox**

Fluid

**PETRO CANADA PURITY FG EP GEAR OIL 220 (--- GAL)**

## DIAGNOSIS

### Recommendation

Resample at the next service interval to monitor.  
NOTE: Please provide information regarding reservoir capacity, filter type and micron rating with next sample.

### Wear

All component wear rates are normal.

### Contamination

There is no indication of any contamination in the oil.

### Fluid Condition

The AN level is acceptable for this fluid. The condition of the oil is suitable for further service.

## SAMPLE INFORMATION

	method	limit/base	current	history1	history2
Sample Number	Client Info		<b>PCA0118564</b>	PCA0078578	PCA0078625
Sample Date	Client Info		<b>18 Apr 2024</b>	08 Sep 2023	11 Sep 2022
Machine Age	hrs	Client Info	<b>0</b>	0	0
Oil Age	hrs	Client Info	<b>0</b>	0	0
Oil Changed	Client Info		<b>N/A</b>	N/A	N/A
Sample Status			<b>NORMAL</b>	NORMAL	NORMAL

## CONTAMINATION

	method	limit/base	current	history1	history2
Water	WC Method	>0.2	<b>NEG</b>	NEG	NEG

## WEAR METALS

	method	limit/base	current	history1	history2
PQ	ASTM D8184		<b>12</b>	10	11
Iron	ppm	ASTM D5185m >200	<b>&lt;1</b>	<1	<1
Chromium	ppm	ASTM D5185m >15	<b>&lt;1</b>	0	0
Nickel	ppm	ASTM D5185m >15	<b>&lt;1</b>	0	0
Titanium	ppm	ASTM D5185m	<b>&lt;1</b>	0	0
Silver	ppm	ASTM D5185m	<b>0</b>	0	0
Aluminum	ppm	ASTM D5185m >25	<b>2</b>	0	0
Lead	ppm	ASTM D5185m >100	<b>&lt;1</b>	0	0
Copper	ppm	ASTM D5185m >200	<b>&lt;1</b>	0	0
Tin	ppm	ASTM D5185m >25	<b>&lt;1</b>	0	0
Antimony	ppm	ASTM D5185m >5	<b>---</b>	---	---
Vanadium	ppm	ASTM D5185m	<b>&lt;1</b>	0	0
Cadmium	ppm	ASTM D5185m	<b>&lt;1</b>	0	0

## ADDITIVES

	method	limit/base	current	history1	history2
Boron	ppm	ASTM D5185m	<b>0</b>	0	0
Barium	ppm	ASTM D5185m	<b>0</b>	0	0
Molybdenum	ppm	ASTM D5185m	<b>&lt;1</b>	0	0
Manganese	ppm	ASTM D5185m	<b>0</b>	<1	<1
Magnesium	ppm	ASTM D5185m	<b>&lt;1</b>	0	0
Calcium	ppm	ASTM D5185m	<b>4</b>	<1	0
Phosphorus	ppm	ASTM D5185m	<b>634</b>	630	545
Zinc	ppm	ASTM D5185m	<b>2</b>	0	7
Sulfur	ppm	ASTM D5185m	<b>628</b>	779	594

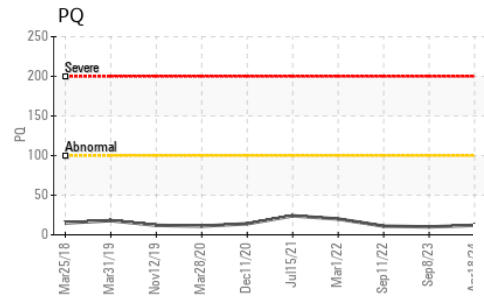
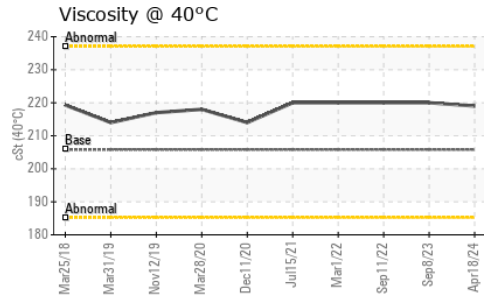
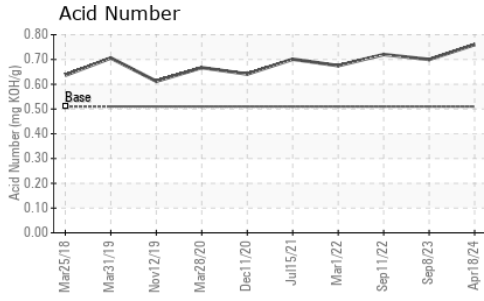
## CONTAMINANTS

	method	limit/base	current	history1	history2
Silicon	ppm	ASTM D5185m >50	<b>14</b>	16	12
Sodium	ppm	ASTM D5185m	<b>1</b>	<1	0
Potassium	ppm	ASTM D5185m >20	<b>&lt;1</b>	<1	0

## FLUID DEGRADATION

	method	limit/base	current	history1	history2
Acid Number (AN)	mg KOH/g	ASTM D8045 0.51	<b>0.76</b>	0.70	0.72

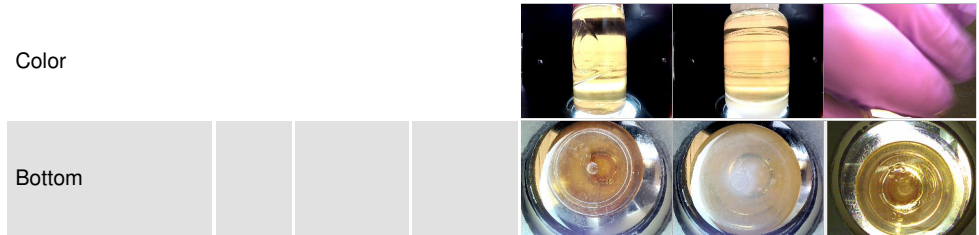
# OIL ANALYSIS REPORT



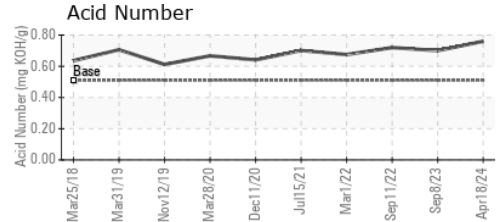
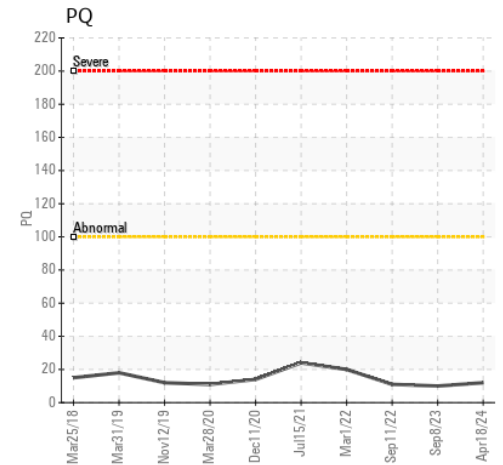
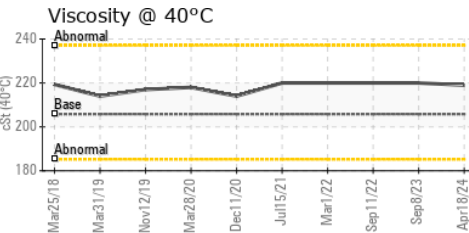
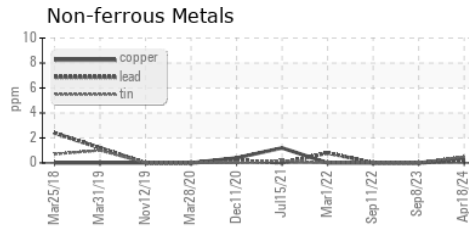
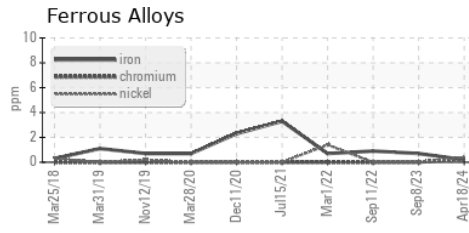
VISUAL	method	limit/base	current	history1	history2
White Metal	scalar	*Visual	NONE	<b>NONE</b>	NONE
Yellow Metal	scalar	*Visual	NONE	<b>NONE</b>	NONE
Precipitate	scalar	*Visual	NONE	<b>NONE</b>	NONE
Silt	scalar	*Visual	NONE	<b>NONE</b>	NONE
Debris	scalar	*Visual	NONE	<b>NONE</b>	NONE
Sand/Dirt	scalar	*Visual	NONE	<b>NONE</b>	NONE
Appearance	scalar	*Visual	NORML	<b>NORML</b>	NORML
Odor	scalar	*Visual	NORML	<b>NORML</b>	NORML
Emulsified Water	scalar	*Visual	>0.2	<b>NEG</b>	NEG
Free Water	scalar	*Visual		<b>NEG</b>	NEG

FLUID PROPERTIES	method	limit/base	current	history1	history2
Visc @ 40°C	cSt	ASTM D445	205.8	<b>219</b>	220

SAMPLE IMAGES	method	limit/base	current	history1	history2
---------------	--------	------------	---------	----------	----------



## GRAPHS



Certificate L2367

**Laboratory** : WearCheck USA - 501 Madison Ave., Cary, NC 27513  
**Sample No.** : PCA0118564  
**Lab Number** : 06159280  
**Unique Number** : 10994703  
**Test Package** : IND 2 ( Additional Tests: PQ )

**Received** : 24 Apr 2024  
**Tested** : 25 Apr 2024  
**Diagnosed** : 25 Apr 2024 - Wes Davis

**THE HERSHEY COMPANY**  
 WEST HERSHEY - TECHNICAL ASSURANCE, 1033 OLDE WEST CHOCOLATE  
 HERSHEY, PA  
 US 17033

Contact: CLINTON ZOHNER  
 clintzohner@hersheys.com

T: (717)374-4846  
 F: (717)374-4594

To discuss this sample report, contact Customer Service at 1-800-237-1369.

\* - Denotes test methods that are outside of the ISO 17025 scope of accreditation.

Statements of conformity to specifications are based on the simple acceptance decision rule (JCGM 106:2012)