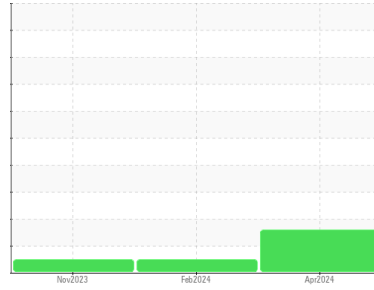


FUEL REPORT

Sample Rating Trend



VISUAL METAL



Machine Id
SENNEBOGEN 835 MH-87
 Component
Diesel Fuel
 Fluid
{not provided} (--- GAL)

DIAGNOSIS

Recommendation

We recommend you service the filters on this component.

Corrosion

Moderate concentration of visible metal present. All metal levels are normal indicating no corrosion in the system.

Contaminants

Moderate concentration of visible dirt/debris present in the fuel. The water content is negligible.

Fuel Condition

The condition of the fuel is acceptable for the time in service.

SAMPLE INFORMATION		method	limit/base	current	history1	history2
Sample Number	Client Info			PCA0120882	PCA0113824	PCA0113829
Sample Date	Client Info			11 Apr 2024	12 Feb 2024	20 Nov 2023
Machine Age	hrs	Client Info		3964	3476	2876
Sample Status				ABNORMAL	NORMAL	NORMAL

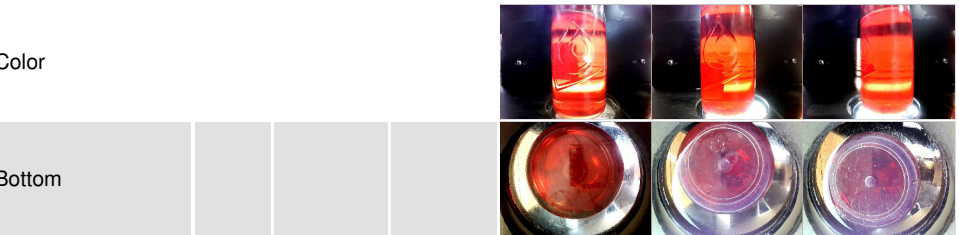
PHYSICAL PROPERTIES		method	limit/base	current	history1	history2
Visc @ 40°C	cSt	ASTM D445		2.66	2.79	2.36

SULFUR CONTENT		method	limit/base	current	history1	history2
Sulfur	ppm	ASTM D5185m		0	0	0

CONTAMINANTS		method	limit/base	current	history1	history2
Silicon	ppm	ASTM D5185m	<1.0	0	<1	0
Sodium	ppm	ASTM D5185m	<0.1	0	0	0
Potassium	ppm	ASTM D5185m	<0.1	0	0	<1
Water	%	ASTM D6304	<0.05	0.008	0.003	0.003
ppm Water	ppm	ASTM D6304	<500	90	29	36

HEAVY METALS		method	limit/base	current	history1	history2
Aluminum	ppm	ASTM D5185m	<0.1	0	2	1
Nickel	ppm	ASTM D5185m	<0.1	0	0	0
Lead	ppm	ASTM D5185m	<0.1	0	0	0
Vanadium	ppm	ASTM D5185m	<0.1	0	0	0
Iron	ppm	ASTM D5185m	<0.1	0	0	0
Calcium	ppm	ASTM D5185m	<0.1	1	0	0
Magnesium	ppm	ASTM D5185m	<0.1	<1	0	0
Phosphorus	ppm	ASTM D5185m	<0.1	0	0	0
Zinc	ppm	ASTM D5185m	<0.1	0	0	0

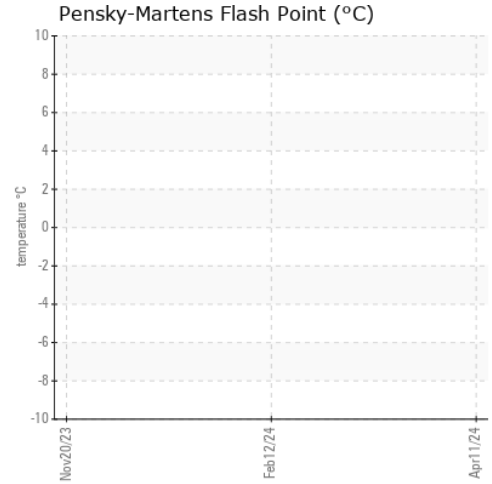
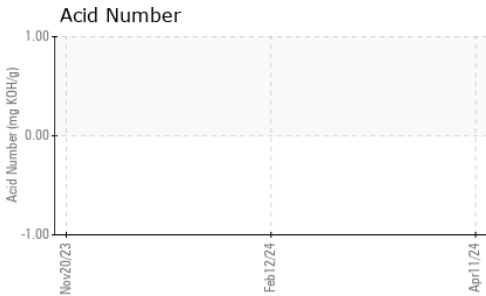
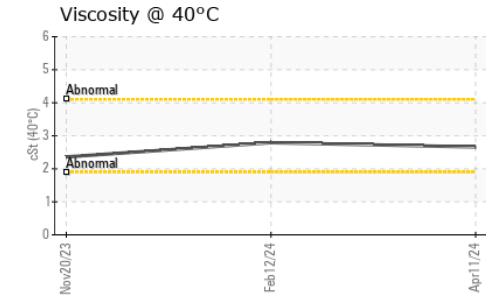
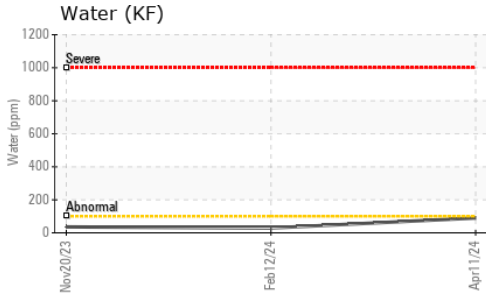
SAMPLE IMAGES		method	limit/base	current	history1	history2
---------------	--	--------	------------	---------	----------	----------





FUEL REPORT

GRAPHS



Certificate L2367

Laboratory : WearCheck USA - 501 Madison Ave., Cary, NC 27513
Sample No. : PCA0120882 **Received** : 24 Apr 2024
Lab Number : 06159972 **Tested** : 30 Apr 2024
Unique Number : 10995395 **Diagnosed** : 30 Apr 2024 - Jonathan Hester
Test Package : MOB 2 (Additional Tests: KF, PrtCount)

SCRAP METAL SERVICES NON-FERROUS DIVISION
 3000 W 139TH ST
 BLUE ISLAND, IL
 US 60406
 Contact: SERGIO FERNANDEZ
 sfernandez@scrapmetalservices.com

To discuss this sample report, contact Customer Service at 1-800-237-1369.

* - Denotes test methods that are outside of the ISO 17025 scope of accreditation.

Statements of conformity to specifications are based on the simple acceptance decision rule (JCGM 106:2012)

T:
F: