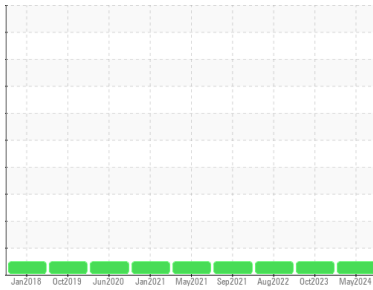


OIL ANALYSIS REPORT

Sample Rating Trend



NORMAL



Machine Id
MACK 26
 Component
Diesel Engine
 Fluid
PETRO CANADA DURON HP 15W40 (8 GAL)

DIAGNOSIS

Recommendation

Resample at the next service interval to monitor.

Wear

All component wear rates are normal.

Contamination

There is no indication of any contamination in the oil.

Fluid Condition

The BN result indicates that there is suitable alkalinity remaining in the oil. The AN level is acceptable for this fluid. The condition of the oil is suitable for further service.

SAMPLE INFORMATION

| | method | limit/base | current | history1 | history2 |
|---------------|-------------|-------------|--------------------|-------------|-------------|
| Sample Number | Client Info | | PCA0098387 | PCA0090841 | PCA0072068 |
| Sample Date | Client Info | | 30 May 2024 | 25 Oct 2023 | 26 Aug 2022 |
| Machine Age | mls | Client Info | 471500 | 469314 | 449725 |
| Oil Age | mls | Client Info | 2186 | 4036 | 4800 |
| Oil Changed | Client Info | | Changed | Changed | Changed |
| Sample Status | | | NORMAL | NORMAL | NORMAL |

CONTAMINATION

| | method | limit/base | current | history1 | history2 |
|--------|-----------|------------|----------------|----------|----------|
| Fuel | WC Method | >3.0 | <1.0 | <1.0 | <1.0 |
| Water | WC Method | >0.2 | NEG | NEG | NEG |
| Glycol | WC Method | | NEG | NEG | NEG |

WEAR METALS

| | method | limit/base | current | history1 | history2 |
|----------|--------|------------------|--------------|----------|----------|
| Iron | ppm | ASTM D5185m >120 | 5 | 18 | 9 |
| Chromium | ppm | ASTM D5185m >20 | 0 | <1 | <1 |
| Nickel | ppm | ASTM D5185m >5 | 0 | 0 | 0 |
| Titanium | ppm | ASTM D5185m >2 | 0 | <1 | 0 |
| Silver | ppm | ASTM D5185m >2 | 0 | 0 | 0 |
| Aluminum | ppm | ASTM D5185m >20 | 7 | 15 | 3 |
| Lead | ppm | ASTM D5185m >40 | 0 | 1 | <1 |
| Copper | ppm | ASTM D5185m >330 | 0 | 2 | 2 |
| Tin | ppm | ASTM D5185m >15 | 0 | <1 | 1 |
| Antimony | ppm | ASTM D5185m | --- | --- | --- |
| Vanadium | ppm | ASTM D5185m | <1 | <1 | 0 |
| Cadmium | ppm | ASTM D5185m | 0 | <1 | 0 |

ADDITIVES

| | method | limit/base | current | history1 | history2 |
|------------|--------|-------------|-------------|----------|----------|
| Boron | ppm | ASTM D5185m | 0 | 6 | 14 |
| Barium | ppm | ASTM D5185m | 0 | 0 | 0 |
| Molybdenum | ppm | ASTM D5185m | 29 | 58 | 55 |
| Manganese | ppm | ASTM D5185m | 0 | <1 | <1 |
| Magnesium | ppm | ASTM D5185m | 400 | 904 | 869 |
| Calcium | ppm | ASTM D5185m | 2018 | 1053 | 1159 |
| Phosphorus | ppm | ASTM D5185m | 1020 | 1078 | 965 |
| Zinc | ppm | ASTM D5185m | 1201 | 1154 | 1196 |
| Sulfur | ppm | ASTM D5185m | 4287 | 2925 | 3021 |

CONTAMINANTS

| | method | limit/base | current | history1 | history2 |
|-----------|--------|-----------------|--------------|----------|----------|
| Silicon | ppm | ASTM D5185m >25 | 4 | 7 | 5 |
| Sodium | ppm | ASTM D5185m | 2 | 8 | 2 |
| Potassium | ppm | ASTM D5185m >20 | <1 | 5 | 0 |

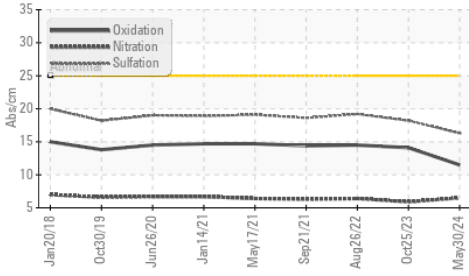
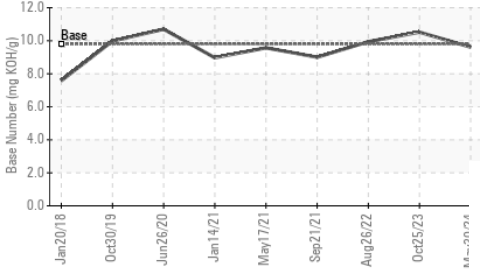
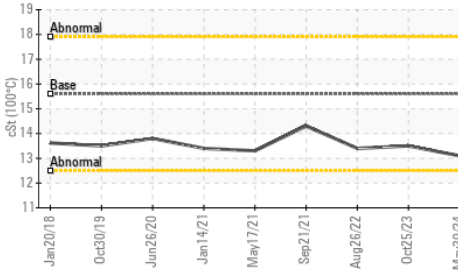
INFRA-RED

| | method | limit/base | current | history1 | history2 |
|-----------|----------|-----------------|-------------|----------|----------|
| Soot % | % | *ASTM D7844 >4 | 0.1 | 0.2 | 0.2 |
| Nitration | Abs/cm | *ASTM D7624 >20 | 6.5 | 5.9 | 6.4 |
| Sulfation | Abs/.1mm | *ASTM D7415 >30 | 16.3 | 18.2 | 19.2 |

FLUID DEGRADATION

| | method | limit/base | current | history1 | history2 |
|------------------|----------|-----------------|-------------|----------|----------|
| Oxidation | Abs/.1mm | *ASTM D7414 >25 | 11.5 | 14.1 | 14.5 |
| Base Number (BN) | mg KOH/g | ASTM D2896 9.8 | 9.61 | 10.52 | 9.94 |

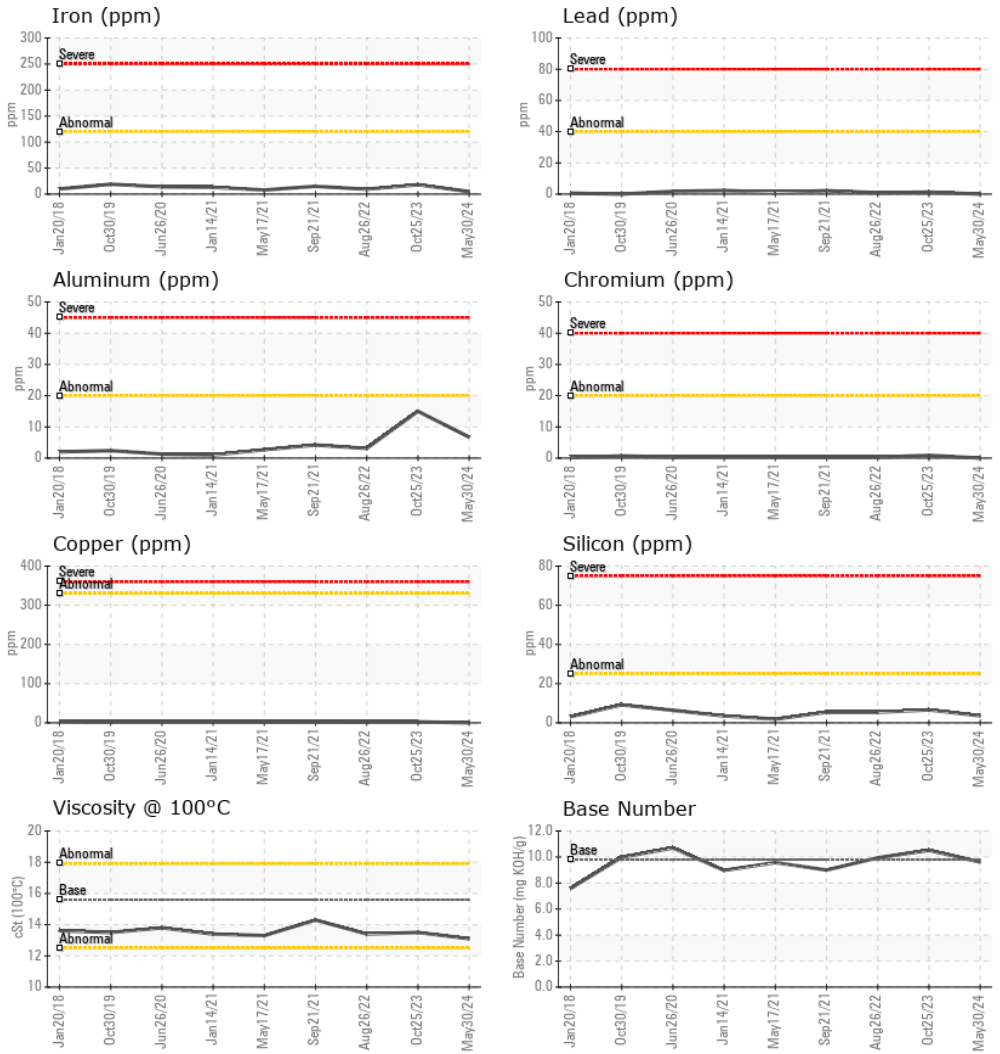
OIL ANALYSIS REPORT

FT-IR (Direct Trend)

Base Number

Viscosity @ 100°C


| PARAMETER | method | limit/base | current | history1 | history2 |
|------------------|--------|------------|---------|----------|----------|
| White Metal | scalar | *Visual | NONE | NONE | NONE |
| Yellow Metal | scalar | *Visual | NONE | NONE | NONE |
| Precipitate | scalar | *Visual | NONE | NONE | NONE |
| Silt | scalar | *Visual | NONE | NONE | NONE |
| Debris | scalar | *Visual | NONE | NONE | NONE |
| Sand/Dirt | scalar | *Visual | NONE | NONE | NONE |
| Appearance | scalar | *Visual | NORML | NORML | NORML |
| Odor | scalar | *Visual | NORML | NORML | NORML |
| Emulsified Water | scalar | *Visual | >0.2 | NEG | NEG |
| Free Water | scalar | *Visual | | NEG | NEG |

| FLUID PROPERTIES | method | limit/base | current | history1 | history2 | |
|------------------|--------|------------|---------|-------------|----------|------|
| Visc @ 100°C | cSt | ASTM D445 | 15.6 | 13.1 | 13.5 | 13.4 |

GRAPHS



Certificate L2367

Laboratory : WearCheck USA - 501 Madison Ave., Cary, NC 27513
Sample No. : PCA0098387
Lab Number : **06201635**
Unique Number : 11063758
Test Package : MOB 2
Received : 06 Jun 2024
Tested : 07 Jun 2024
Diagnosed : 09 Jun 2024 - Don Baldrige

J F PRICE
 611 PLEASANT ST
 E WEYMOUTH, MA
 US 02189
 Contact: JOHN LANG
 gnalj1970@comcast.net
 T: (617)435-7199
 F: (781)337-4150

To discuss this sample report, contact Customer Service at 1-800-237-1369.

* - Denotes test methods that are outside of the ISO 17025 scope of accreditation.

Statements of conformity to specifications are based on the simple acceptance decision rule (JCGM 106:2012)