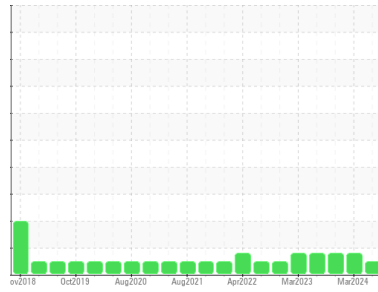


OIL ANALYSIS REPORT

Sample Rating Trend



NORMAL



Machine Id
684389
 Component
Diesel Engine
 Fluid
PETRO CANADA DURON SHP 10W30 (--- QTS)

DIAGNOSIS

Recommendation

Resample at the next service interval to monitor. Please specify the component make and model with your next sample.

Wear

All component wear rates are normal.

Contamination

There is no indication of any contamination in the oil.

Fluid Condition

The BN result indicates that there is suitable alkalinity remaining in the oil. The condition of the oil is suitable for further service.

SAMPLE INFORMATION		method	limit/base	current	history1	history2
Sample Number	Client Info			PCA0127001	PCA0120665	PCA0110480
Sample Date	Client Info			31 May 2024	09 Mar 2024	09 Nov 2023
Machine Age	mls Client Info			334745	321825	301425
Oil Age	mls Client Info			0	0	0
Oil Changed	Client Info			Not Changed	Changed	Not Changed
Sample Status				NORMAL	ABNORMAL	ABNORMAL

CONTAMINATION		method	limit/base	current	history1	history2
Fuel	WC Method	>5		<1.0	<1.0	<1.0
Water	WC Method	>0.2		NEG	NEG	NEG
Glycol	WC Method			NEG	NEG	NEG

WEAR METALS		method	limit/base	current	history1	history2
Iron	ppm	ASTM D5185m	>100	33	71	70
Chromium	ppm	ASTM D5185m	>20	<1	4	4
Nickel	ppm	ASTM D5185m	>4	0	<1	0
Titanium	ppm	ASTM D5185m		<1	<1	<1
Silver	ppm	ASTM D5185m	>3	0	0	0
Aluminum	ppm	ASTM D5185m	>20	16	▲ 38	▲ 40
Lead	ppm	ASTM D5185m	>40	<1	0	0
Copper	ppm	ASTM D5185m	>330	9	21	21
Tin	ppm	ASTM D5185m	>15	2	3	4
Vanadium	ppm	ASTM D5185m		0	<1	<1
Cadmium	ppm	ASTM D5185m		0	0	0

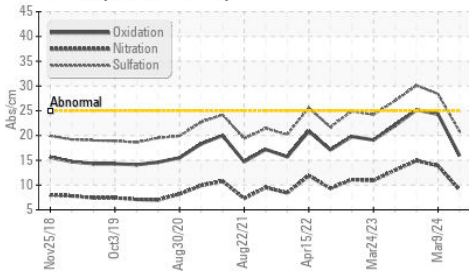
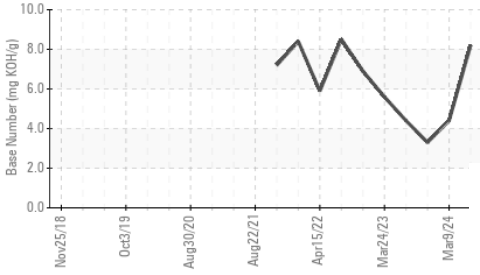
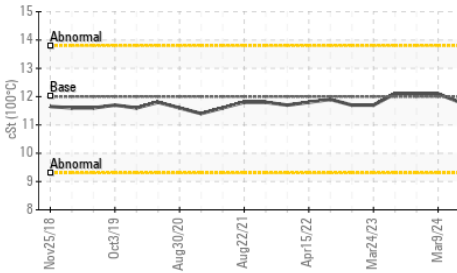
ADDITIVES		method	limit/base	current	history1	history2
Boron	ppm	ASTM D5185m	2	3	2	7
Barium	ppm	ASTM D5185m	0	0	0	0
Molybdenum	ppm	ASTM D5185m	50	71	91	99
Manganese	ppm	ASTM D5185m	0	1	1	2
Magnesium	ppm	ASTM D5185m	950	926	871	933
Calcium	ppm	ASTM D5185m	1050	1092	1099	1100
Phosphorus	ppm	ASTM D5185m	995	1026	862	917
Zinc	ppm	ASTM D5185m	1180	1229	1081	1220
Sulfur	ppm	ASTM D5185m	2600	3259	2499	2227

CONTAMINANTS		method	limit/base	current	history1	history2
Silicon	ppm	ASTM D5185m	>25	10	23	24
Sodium	ppm	ASTM D5185m		5	11	7
Potassium	ppm	ASTM D5185m	>20	8	21	23

INFRA-RED		method	limit/base	current	history1	history2
Soot %	%	*ASTM D7844	>3	1.3	2.7	2.9
Nitration	Abs/cm	*ASTM D7624	>20	9.0	13.9	14.9
Sulfation	Abs/.1mm	*ASTM D7415	>30	20.8	28.4	30.1

FLUID DEGRADATION		method	limit/base	current	history1	history2
Oxidation	Abs/.1mm	*ASTM D7414	>25	15.9	24.3	25.2
Base Number (BN)	mg KOH/g	ASTM D2896		8.2	4.4	3.3

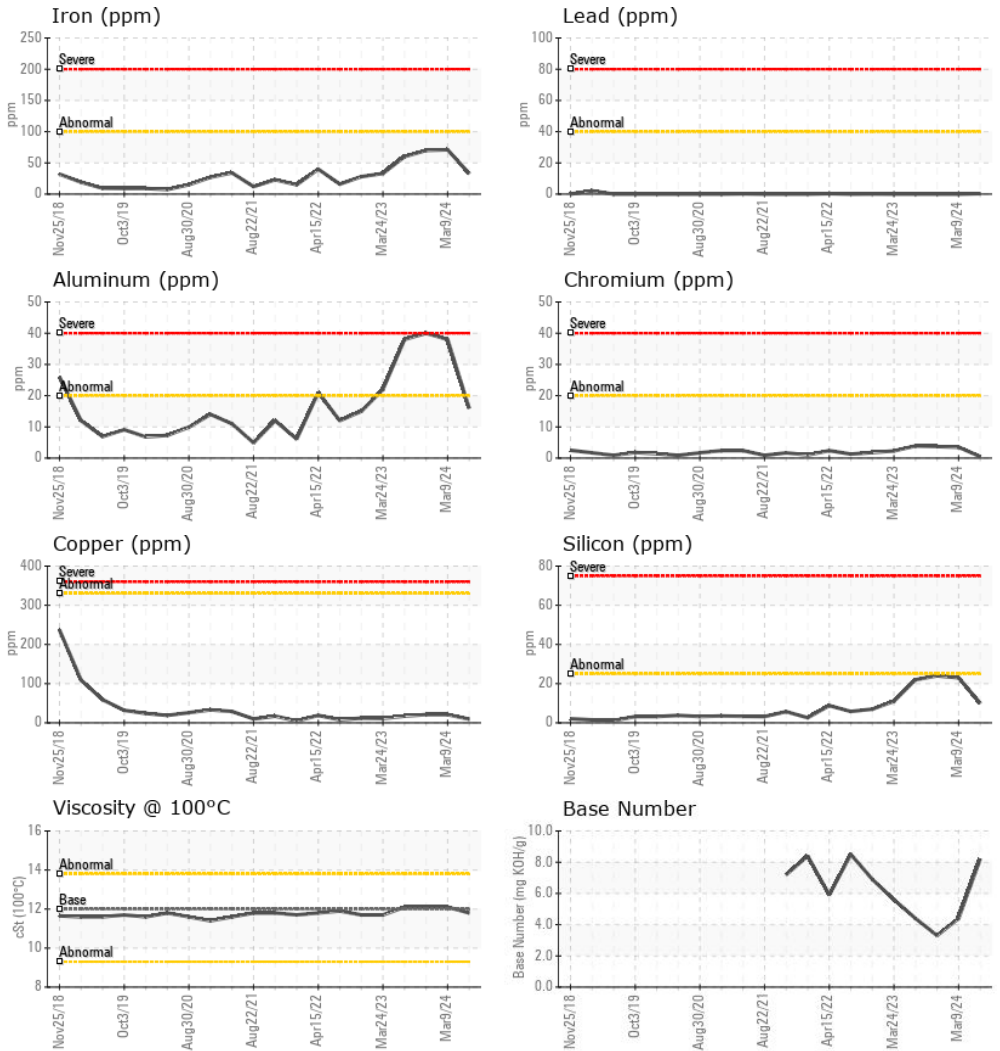
OIL ANALYSIS REPORT

FT-IR (Direct Trend)

Base Number

Viscosity @ 100°C


PARAMETER	method	limit/base	current	history1	history2
White Metal	scalar	*Visual	NONE	NONE	NONE
Yellow Metal	scalar	*Visual	NONE	NONE	NONE
Precipitate	scalar	*Visual	NONE	NONE	NONE
Silt	scalar	*Visual	NONE	NONE	NONE
Debris	scalar	*Visual	NONE	NONE	NONE
Sand/Dirt	scalar	*Visual	NONE	NONE	NONE
Appearance	scalar	*Visual	NORML	NORML	NORML
Odor	scalar	*Visual	NORML	NORML	NORML
Emulsified Water	scalar	*Visual	>0.2	NEG	NEG
Free Water	scalar	*Visual		NEG	NEG

FLUID PROPERTIES	method	limit/base	current	history1	history2
Visc @ 100°C	cSt	ASTM D445	12.00	11.8	12.1

GRAPHS



Certificate L2367

Laboratory : WearCheck USA - 501 Madison Ave., Cary, NC 27513
Sample No. : PCA0127001 **Received** : 14 Jun 2024
Lab Number : 06209801 **Tested** : 15 Jun 2024
Unique Number : 11082665 **Diagnosed** : 15 Jun 2024 - Wes Davis
Test Package : MOB 1 (Additional Tests: TBN)

MILLER TRUCK LEASING #119
 39 INDUSTRIAL AVE
 HASBROUCK HEIGHTS, NJ
 US 07604
 Contact: MIKE LONGETTE
 mlongette@millertransgroup.com

To discuss this sample report, contact Customer Service at 1-800-237-1369.

* - Denotes test methods that are outside of the ISO 17025 scope of accreditation.

Statements of conformity to specifications are based on the simple acceptance decision rule (JCGM 106:2012)

T: F: (201)528-7053