



OIL ANALYSIS REPORT

Sample Rating Trend



NORMAL



Machine Id

935008

Component

Natural Gas Engine

Fluid

DIESEL ENGINE OIL SAE 40 (--- GAL)

DIAGNOSIS

Recommendation

Resample at the next service interval to monitor.

Wear

All component wear rates are normal.

Contamination

There is no indication of any contamination in the oil.

Fluid Condition

The BN result indicates that there is suitable alkalinity remaining in the oil. The condition of the oil is suitable for further service.

SAMPLE INFORMATION		method	limit/base	current	history1	history2
Sample Number	Client Info			GFL0122003	---	---
Sample Date	Client Info			25 Jun 2024	---	---
Machine Age	hrs	Client Info		0	---	---
Oil Age	hrs	Client Info		0	---	---
Oil Changed	Client Info			Not Changed	---	---
Sample Status				NORMAL	---	---

CONTAMINATION		method	limit/base	current	history1	history2
Water	WC Method		>0.1	NEG	---	---

WEAR METALS		method	limit/base	current	history1	history2
Iron	ppm	ASTM D5185m	>50	17	---	---
Chromium	ppm	ASTM D5185m	>4	<1	---	---
Nickel	ppm	ASTM D5185m	>2	<1	---	---
Titanium	ppm	ASTM D5185m		<1	---	---
Silver	ppm	ASTM D5185m	>3	<1	---	---
Aluminum	ppm	ASTM D5185m	>9	4	---	---
Lead	ppm	ASTM D5185m	>30	<1	---	---
Copper	ppm	ASTM D5185m	>35	13	---	---
Tin	ppm	ASTM D5185m	>4	<1	---	---
Vanadium	ppm	ASTM D5185m		<1	---	---
Cadmium	ppm	ASTM D5185m		0	---	---

ADDITIVES		method	limit/base	current	history1	history2
Boron	ppm	ASTM D5185m	250	37	---	---
Barium	ppm	ASTM D5185m	10	5	---	---
Molybdenum	ppm	ASTM D5185m	100	47	---	---
Manganese	ppm	ASTM D5185m		8	---	---
Magnesium	ppm	ASTM D5185m	450	780	---	---
Calcium	ppm	ASTM D5185m	3000	1206	---	---
Phosphorus	ppm	ASTM D5185m	1150	810	---	---
Zinc	ppm	ASTM D5185m	1350	928	---	---
Sulfur	ppm	ASTM D5185m	4250	2814	---	---

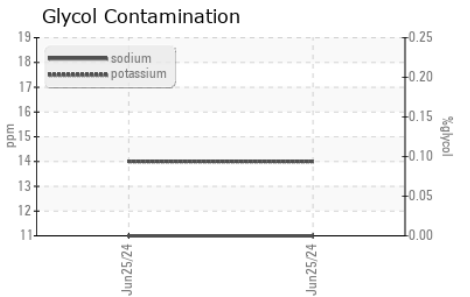
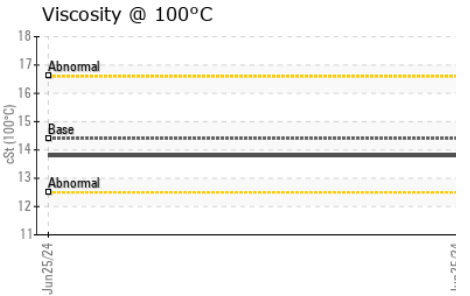
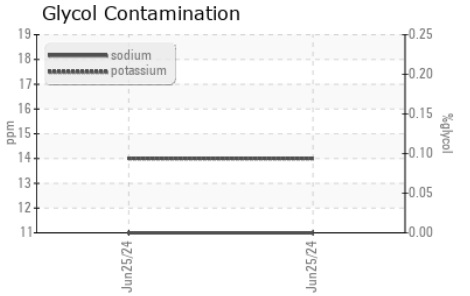
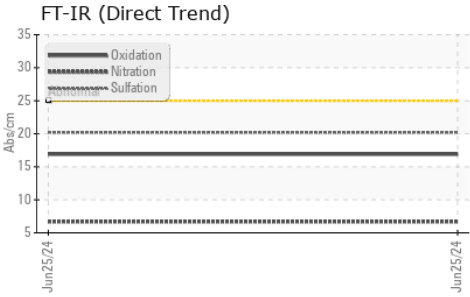
CONTAMINANTS		method	limit/base	current	history1	history2
Silicon	ppm	ASTM D5185m	>+100	19	---	---
Sodium	ppm	ASTM D5185m	>216	11	---	---
Potassium	ppm	ASTM D5185m	>20	14	---	---

INFRA-RED		method	limit/base	current	history1	history2
Soot %	%	*ASTM D7844		0	---	---
Nitration	Abs/cm	*ASTM D7624	>20	6.7	---	---
Sulfation	Abs/.1mm	*ASTM D7415	>30	20.2	---	---

FLUID DEGRADATION		method	limit/base	current	history1	history2
Oxidation	Abs/.1mm	*ASTM D7414	>25	16.9	---	---
Base Number (BN)	mg KOH/g	ASTM D2896	8.5	9.4	---	---



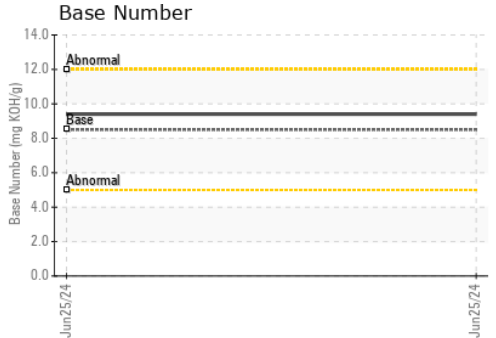
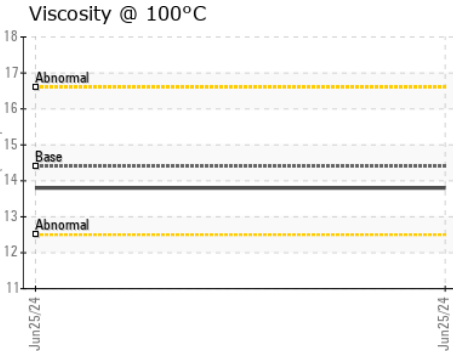
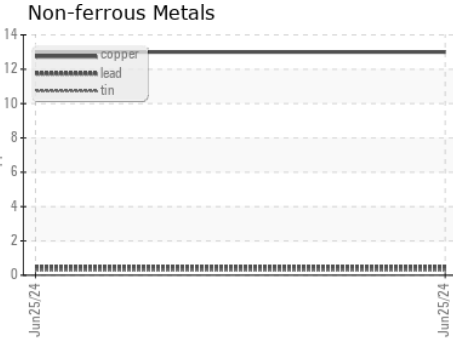
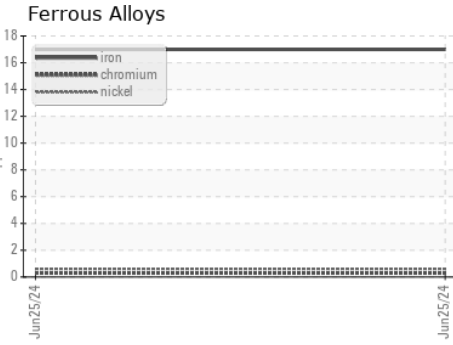
OIL ANALYSIS REPORT



PARAMETER	method	limit/base	current	history1	history2
White Metal	scalar	*Visual	NONE	---	---
Yellow Metal	scalar	*Visual	NONE	---	---
Precipitate	scalar	*Visual	NONE	---	---
Silt	scalar	*Visual	NONE	---	---
Debris	scalar	*Visual	NONE	---	---
Sand/Dirt	scalar	*Visual	NONE	---	---
Appearance	scalar	*Visual	NORML	---	---
Odor	scalar	*Visual	NORML	---	---
Emulsified Water	scalar	*Visual	>0.1	---	---
Free Water	scalar	*Visual	---	---	---

FLUID PROPERTIES	method	limit/base	current	history1	history2
Visc @ 100°C	cSt	ASTM D445	14.4	13.8	---

GRAPHS



Certificate L2367

Laboratory : WearCheck USA - 501 Madison Ave., Cary, NC 27513
 Sample No. : GFL0122003
 Lab Number : 06222167
 Unique Number : 11100364
 Test Package : FLEET (Additional Tests: Glycol)

GFL Environmental - 652 - Fredericksburg Hauling
 10954 Houser Drive
 Fredericksburg, VA
 US 22408
 Contact: WILLIAM MILO
 wmilo@gflenv.com

To discuss this sample report, contact Customer Service at 1-800-237-1369.

* - Denotes test methods that are outside of the ISO 17025 scope of accreditation.

Statements of conformity to specifications are based on the simple acceptance decision rule (JCGM 106:2012)

T:
F: