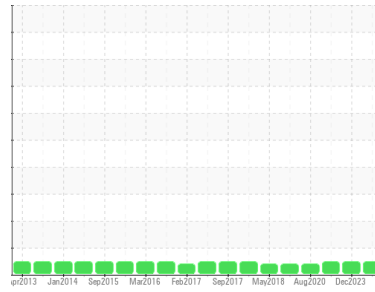


OIL ANALYSIS REPORT

Sample Rating Trend



NORMAL



Area
LINE 7 [910178811]
 Machine Id
[LINE 7] L7 TK-43013 L7 TK-43013
 Component
Lower Gearbox
 Fluid
BLUE B LABLE (--- GAL)

DIAGNOSIS

Recommendation

Resample at the next service interval to monitor.
 NOTE: Please provide information regarding reservoir capacity, filter type and micron rating with next sample.

Wear

All component wear rates are normal.

Contamination

There is no indication of any contamination in the oil.

Fluid Condition

The AN level is acceptable for this fluid. The condition of the oil is suitable for further service.

SAMPLE INFORMATION

method	limit/base	current	history1	history2
Sample Number	Client Info	PCA0128257	PCA0102832	PCA0026293
Sample Date	Client Info	25 Jun 2024	14 Dec 2023	07 Oct 2020
Machine Age	hrs	3000	0	0
Oil Age	hrs	0	3000	0
Oil Changed	Client Info	N/A	N/A	N/A
Sample Status		NORMAL	NORMAL	NORMAL

CONTAMINATION

method	limit/base	current	history1	history2
Water	WC Method >0.2	NEG	NEG	NEG

WEAR METALS

method	limit/base	current	history1	history2
PQ	ASTM D8184	18	14	18
Iron	ppm ASTM D5185m >200	<1	<1	<1
Chromium	ppm ASTM D5185m >15	<1	<1	0
Nickel	ppm ASTM D5185m >15	0	0	0
Titanium	ppm ASTM D5185m	<1	<1	0
Silver	ppm ASTM D5185m	0	0	0
Aluminum	ppm ASTM D5185m >25	3	1	<1
Lead	ppm ASTM D5185m >100	<1	0	0
Copper	ppm ASTM D5185m >200	<1	<1	0
Tin	ppm ASTM D5185m >25	0	0	<1
Antimony	ppm ASTM D5185m >5	---	---	0
Vanadium	ppm ASTM D5185m	0	0	<1
Cadmium	ppm ASTM D5185m	0	0	0

ADDITIVES

method	limit/base	current	history1	history2
Boron	ppm ASTM D5185m	0	0	<1
Barium	ppm ASTM D5185m	0	0	0
Molybdenum	ppm ASTM D5185m	0	<1	0
Manganese	ppm ASTM D5185m	0	0	0
Magnesium	ppm ASTM D5185m	<1	0	0
Calcium	ppm ASTM D5185m	0	0	<1
Phosphorus	ppm ASTM D5185m	509	566	552
Zinc	ppm ASTM D5185m	3	0	4
Sulfur	ppm ASTM D5185m	774	951	654

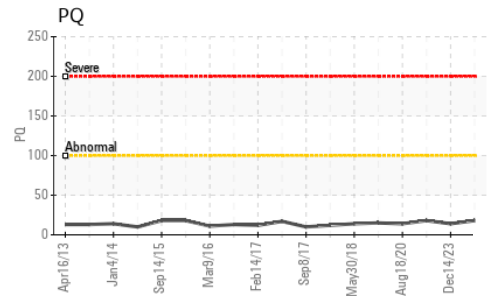
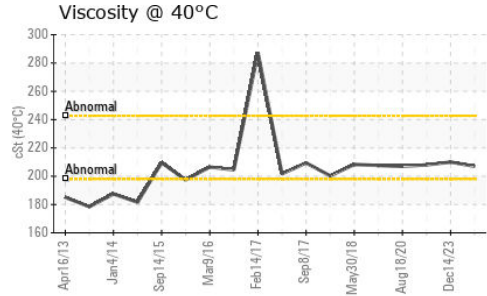
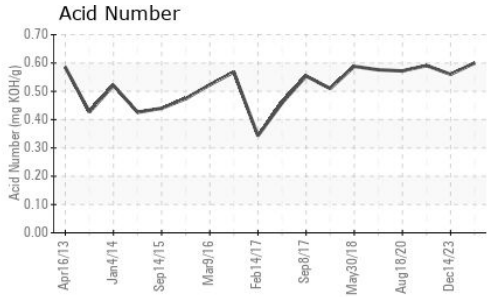
CONTAMINANTS

method	limit/base	current	history1	history2
Silicon	ppm ASTM D5185m >50	2	4	6
Sodium	ppm ASTM D5185m	<1	0	0
Potassium	ppm ASTM D5185m >20	1	1	0

FLUID DEGRADATION

method	limit/base	current	history1	history2
Acid Number (AN)	mg KOH/g ASTM D8045	0.60	0.56	0.591

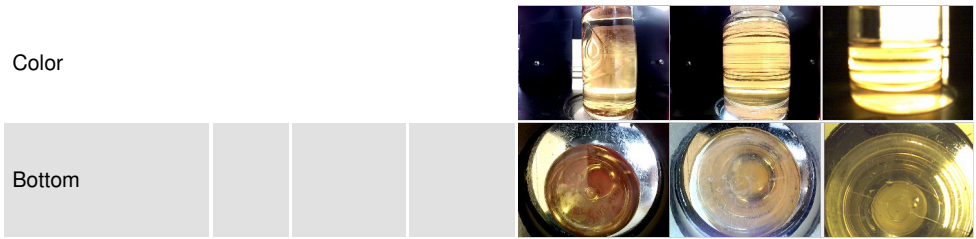
OIL ANALYSIS REPORT



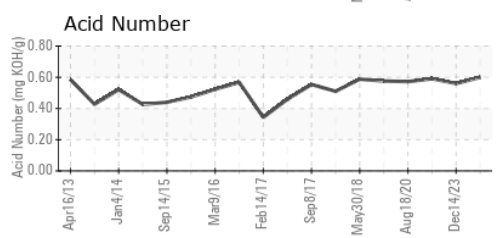
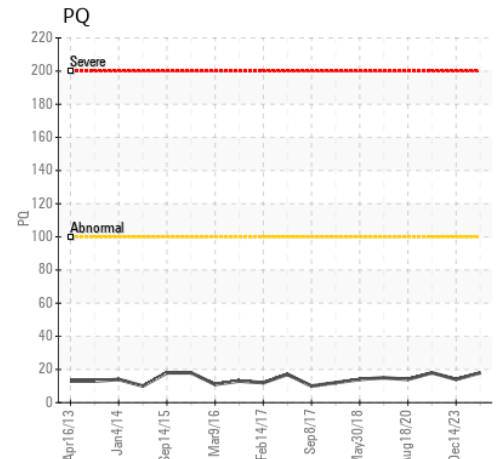
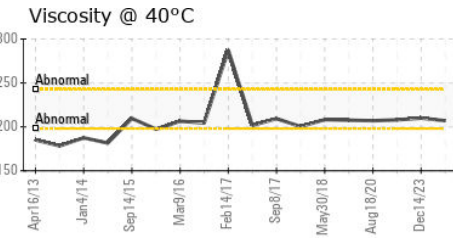
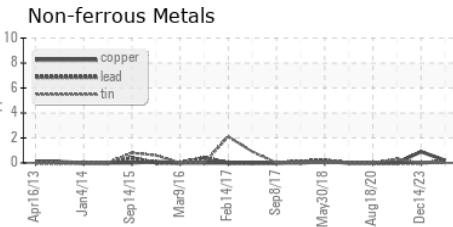
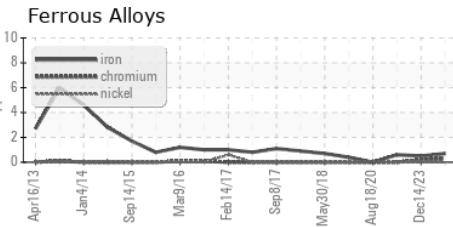
VISUAL	method	limit/base	current	history1	history2
White Metal	scalar	*Visual	NONE	NONE	NONE
Yellow Metal	scalar	*Visual	NONE	NONE	NONE
Precipitate	scalar	*Visual	NONE	NONE	NONE
Silt	scalar	*Visual	NONE	NONE	NONE
Debris	scalar	*Visual	NONE	NONE	NONE
Sand/Dirt	scalar	*Visual	NONE	NONE	NONE
Appearance	scalar	*Visual	NORML	NORML	NORML
Odor	scalar	*Visual	NORML	NORML	NORML
Emulsified Water	scalar	*Visual	>0.2	NEG	NEG
Free Water	scalar	*Visual		NEG	NEG

FLUID PROPERTIES	method	limit/base	current	history1	history2
Visc @ 40°C	cSt	ASTM D445	207	210	208

SAMPLE IMAGES	method	limit/base	current	history1	history2
---------------	--------	------------	---------	----------	----------



GRAPHS



Laboratory : WearCheck USA - 501 Madison Ave., Cary, NC 27513
Sample No. : PCA0128257 **Received** : 27 Jun 2024
Lab Number : 06222458 **Tested** : 01 Jul 2024
Unique Number : 11100655 **Diagnosed** : 01 Jul 2024 - Wes Davis
Test Package : IND 2 (Additional Tests: PQ)

THE HERSHEY COMPANY
 WEST HERSHEY - TECHNICAL ASSURANCE, 1033 OLDE WEST CHOCOLATE
 HERSHEY, PA
 US 17033
 Contact: CLINTON ZOHNER
 clintzohner@hersheys.com
 T: (717)374-4846
 F: (717)374-4594

To discuss this sample report, contact Customer Service at 1-800-237-1369.
 * - Denotes test methods that are outside of the ISO 17025 scope of accreditation.
 Statements of conformity to specifications are based on the simple acceptance decision rule (JCGM 106:2012)