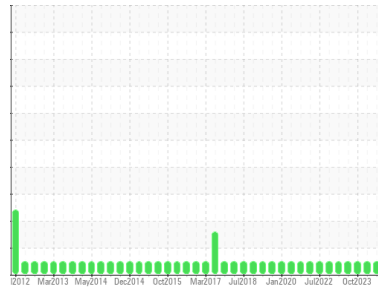


OIL ANALYSIS REPORT

Sample Rating Trend



NORMAL



Machine Id
2012 PREVOST 109
 Component
Rear Diesel Engine
 Fluid
PETRO CANADA DURON-E XL 15W40 (--- GAL)

DIAGNOSIS

Recommendation

Resample at the next service interval to monitor.

Wear

All component wear rates are normal.

Contamination

There is no indication of any contamination in the oil.

Fluid Condition

The BN result indicates that there is suitable alkalinity remaining in the oil. The condition of the oil is suitable for further service.

SAMPLE INFORMATION

	method	limit/base	current	history1	history2
Sample Number	Client Info		PCA0125069	PCA0111550	PCA0101046
Sample Date	Client Info		17 Jun 2024	04 Mar 2024	24 Oct 2023
Machine Age	mls	Client Info	512899	503639	491506
Oil Age	mls	Client Info	9360	12133	13598
Oil Changed	Client Info		Changed	Changed	Changed
Sample Status			NORMAL	NORMAL	NORMAL

CONTAMINATION

	method	limit/base	current	history1	history2
Fuel	WC Method	>5	<1.0	<1.0	<1.0
Water	WC Method	>0.2	NEG	NEG	NEG
Glycol	WC Method		NEG	NEG	NEG

WEAR METALS

	method	limit/base	current	history1	history2
Iron	ppm	ASTM D5185m >100	13	18	15
Chromium	ppm	ASTM D5185m >20	<1	<1	0
Nickel	ppm	ASTM D5185m >4	<1	<1	<1
Titanium	ppm	ASTM D5185m	<1	0	<1
Silver	ppm	ASTM D5185m >3	0	0	0
Aluminum	ppm	ASTM D5185m >20	3	2	1
Lead	ppm	ASTM D5185m >40	<1	<1	0
Copper	ppm	ASTM D5185m >330	1	<1	<1
Tin	ppm	ASTM D5185m >15	<1	<1	<1
Vanadium	ppm	ASTM D5185m	0	0	0
Cadmium	ppm	ASTM D5185m	0	0	0

ADDITIVES

	method	limit/base	current	history1	history2
Boron	ppm	ASTM D5185m 1	7	1	1
Barium	ppm	ASTM D5185m 0	0	0	0
Molybdenum	ppm	ASTM D5185m 60	57	58	55
Manganese	ppm	ASTM D5185m 0	<1	0	0
Magnesium	ppm	ASTM D5185m 1010	856	893	891
Calcium	ppm	ASTM D5185m 1070	1066	1035	974
Phosphorus	ppm	ASTM D5185m 1150	981	944	905
Zinc	ppm	ASTM D5185m 1270	1171	1156	1148
Sulfur	ppm	ASTM D5185m 2060	3347	2980	2681

CONTAMINANTS

	method	limit/base	current	history1	history2
Silicon	ppm	ASTM D5185m >25	5	5	4
Sodium	ppm	ASTM D5185m	37	28	28
Potassium	ppm	ASTM D5185m >20	6	4	5

INFRA-RED

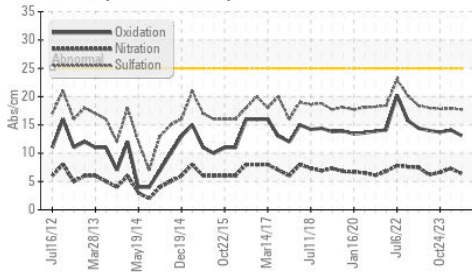
	method	limit/base	current	history1	history2
Soot %	%	*ASTM D7844 >3	0.2	0.2	0.2
Nitration	Abs/cm	*ASTM D7624 >20	6.4	7.3	6.6
Sulfation	Abs/.1mm	*ASTM D7415 >30	17.7	17.9	17.8

FLUID DEGRADATION

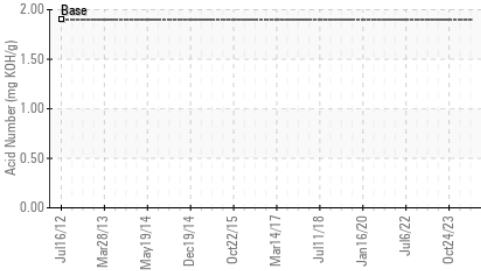
	method	limit/base	current	history1	history2
Oxidation	Abs/.1mm	*ASTM D7414 >25	13.1	14.1	13.7
Base Number (BN)	mg KOH/g	ASTM D2896 10.0	10.24	10.82	10.09

OIL ANALYSIS REPORT

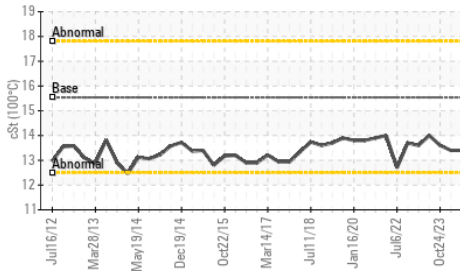
FT-IR (Direct Trend)



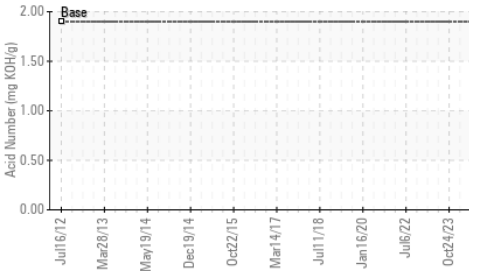
Acid Number



Viscosity @ 100°C



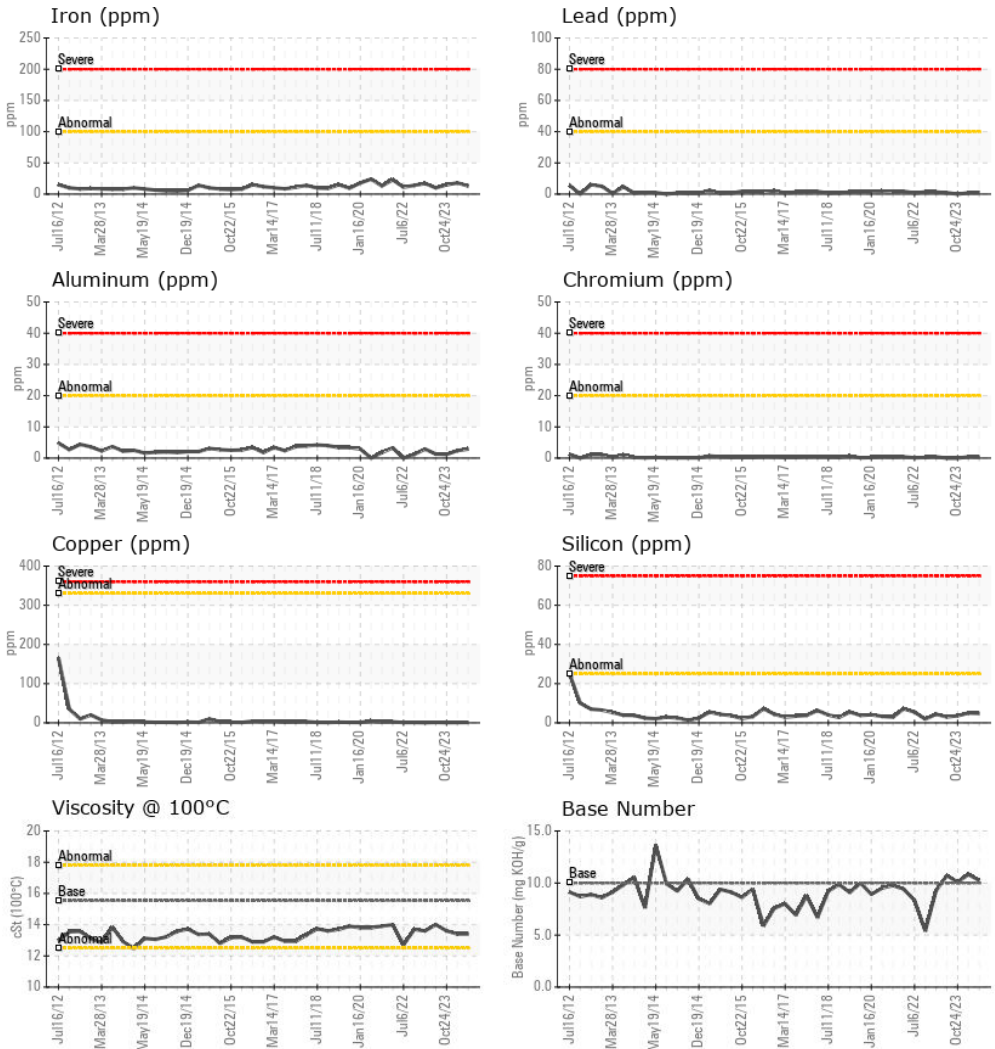
Acid Number



VISUAL	method	limit/base	current	history1	history2
White Metal	scalar	*Visual	NONE	NONE	NONE
Yellow Metal	scalar	*Visual	NONE	NONE	NONE
Precipitate	scalar	*Visual	NONE	NONE	NONE
Silt	scalar	*Visual	NONE	NONE	NONE
Debris	scalar	*Visual	NONE	NONE	NONE
Sand/Dirt	scalar	*Visual	NONE	NONE	NONE
Appearance	scalar	*Visual	NORML	NORML	NORML
Odor	scalar	*Visual	NORML	NORML	NORML
Emulsified Water	scalar	*Visual	>0.2	NEG	NEG
Free Water	scalar	*Visual		NEG	NEG

FLUID PROPERTIES	method	limit/base	current	history1	history2
Visc @ 100°C	cSt	ASTM D445	15.54	13.4	13.6

GRAPHS



Certificate L2367

Laboratory : WearCheck USA - 501 Madison Ave., Cary, NC 27513

Sample No. : PCA0125069

Lab Number : 06222498

Unique Number : 11100695

Test Package : MOB 2 (Additional Tests: TAN Man)

Received : 27 Jun 2024

Tested : 28 Jun 2024

Diagnosed : 28 Jun 2024 - Angela Borella

BROWN BUS COMPANY - UPSTATE TRANSIT

50 VENNER ROAD

AMSTERDAM, NY

US 12010

Contact: CONNIE WILBUR

cwilbur@browncoach.com

T: (518)843-4700

F: (518)843-3600

To discuss this sample report, contact Customer Service at 1-800-237-1369.

* - Denotes test methods that are outside of the ISO 17025 scope of accreditation.

Statements of conformity to specifications are based on the simple acceptance decision rule (JCGM 106:2012)