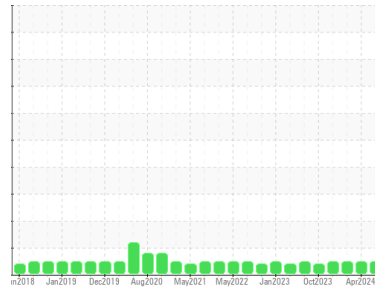


OIL ANALYSIS REPORT

Sample Rating Trend



NORMAL



Machine Id
L-7 62 DISTRIBUTION

Component
Gearbox
Fluid
PETRO CANADA ENDURATEX EP 150 (6 GAL)

DIAGNOSIS

Recommendation

Resample at the next service interval to monitor.

Wear

All component wear rates are normal.

Contamination

There is no indication of any contamination in the oil.

Fluid Condition

The AN level is acceptable for this fluid. The condition of the oil is suitable for further service.

SAMPLE INFORMATION

method	limit/base	current	history1	history2
Sample Number	Client Info	PCA0116781	PCA0116751	PCA0116737
Sample Date	Client Info	09 Jul 2024	08 Apr 2024	22 Jan 2024
Machine Age	hrs	Client Info	0	0
Oil Age	hrs	Client Info	0	0
Oil Changed	Client Info	N/A	N/A	N/A
Sample Status		NORMAL	NORMAL	NORMAL

CONTAMINATION

method	limit/base	current	history1	history2
Water	WC Method >0.2	NEG	NEG	NEG

WEAR METALS

method	limit/base	current	history1	history2
PQ	ASTM D8184	26	28	35
Iron	ppm ASTM D5185m >200	118	17	19
Chromium	ppm ASTM D5185m >15	<1	0	0
Nickel	ppm ASTM D5185m >15	0	0	0
Titanium	ppm ASTM D5185m	0	0	<1
Silver	ppm ASTM D5185m	0	0	0
Aluminum	ppm ASTM D5185m >25	0	0	0
Lead	ppm ASTM D5185m >100	0	0	0
Copper	ppm ASTM D5185m >200	0	1	<1
Tin	ppm ASTM D5185m >25	0	<1	0
Vanadium	ppm ASTM D5185m	0	0	0
Cadmium	ppm ASTM D5185m	0	0	0

ADDITIVES

method	limit/base	current	history1	history2
Boron	ppm ASTM D5185m 55	44	11	15
Barium	ppm ASTM D5185m 0	0	0	0
Molybdenum	ppm ASTM D5185m 0	0	0	<1
Manganese	ppm ASTM D5185m 0	1	<1	<1
Magnesium	ppm ASTM D5185m 2	2	0	0
Calcium	ppm ASTM D5185m 6	0	0	0
Phosphorus	ppm ASTM D5185m 250	445	421	415
Zinc	ppm ASTM D5185m 3	0	0	0
Sulfur	ppm ASTM D5185m 7500	7347	6109	5770

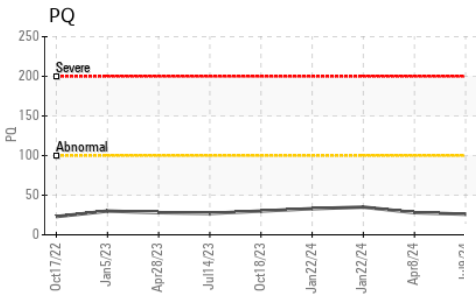
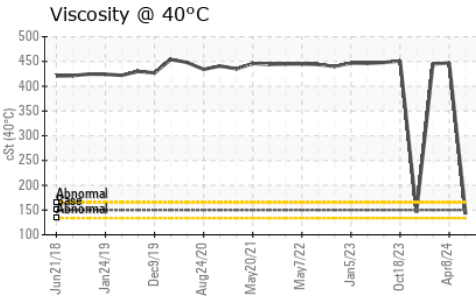
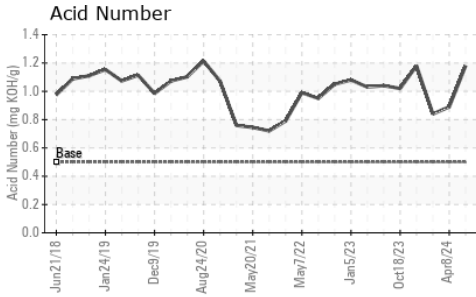
CONTAMINANTS

method	limit/base	current	history1	history2
Silicon	ppm ASTM D5185m >50	<1	<1	4
Sodium	ppm ASTM D5185m	<1	1	0
Potassium	ppm ASTM D5185m >20	<1	0	0

FLUID DEGRADATION

method	limit/base	current	history1	history2
Acid Number (AN)	mg KOH/g ASTM D8045 0.5	1.18	0.89	0.84

OIL ANALYSIS REPORT

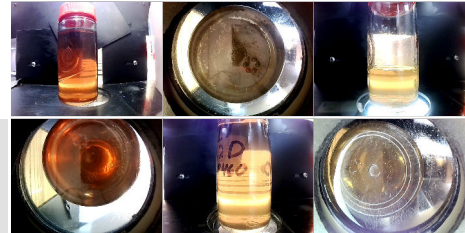


VISUAL	method	limit/base	current	history1	history2
White Metal	scalar	*Visual	NONE	NONE	NONE
Yellow Metal	scalar	*Visual	NONE	NONE	NONE
Precipitate	scalar	*Visual	NONE	NONE	NONE
Silt	scalar	*Visual	NONE	NONE	NONE
Debris	scalar	*Visual	NONE	LIGHT	LIGHT
Sand/Dirt	scalar	*Visual	NONE	NONE	NONE
Appearance	scalar	*Visual	NORML	NORML	NORML
Odor	scalar	*Visual	NORML	NORML	NORML
Emulsified Water	scalar	*Visual	>0.2	NEG	NEG
Free Water	scalar	*Visual		NEG	NEG

FLUID PROPERTIES	method	limit/base	current	history1	history2
Visc @ 40°C	cSt	ASTM D445	150.0	142	447

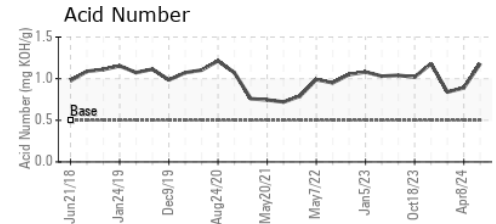
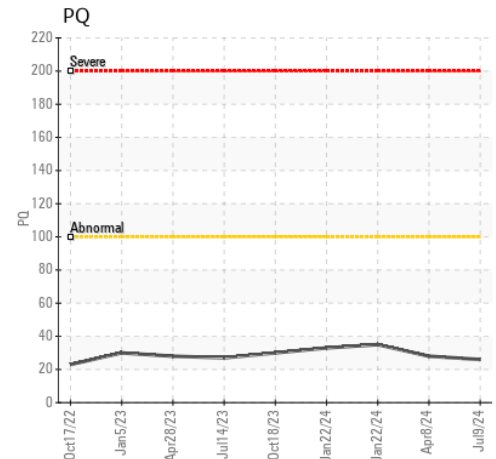
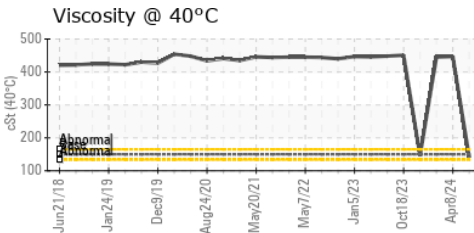
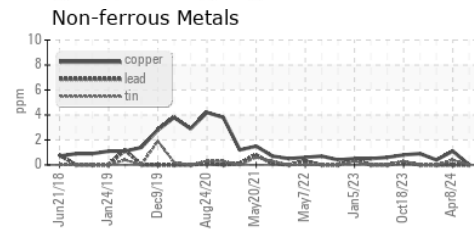
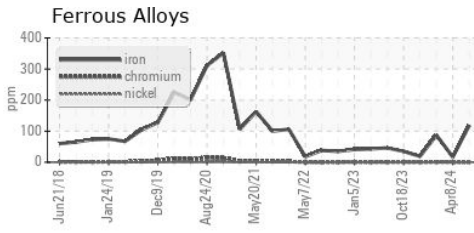
SAMPLE IMAGES	method	limit/base	current	history1	history2
---------------	--------	------------	---------	----------	----------

Color



Bottom

GRAPHS



Certificate L2367

Laboratory : WearCheck USA - 501 Madison Ave., Cary, NC 27513
Sample No. : PCA0116781
Lab Number : 06236203
Unique Number : 11125037
Test Package : PLANT

Received : 15 Jul 2024
Tested : 17 Jul 2024
Diagnosed : 17 Jul 2024 - Wes Davis

CERTAINTED VINYL PLANT
 2651 PENNY RD
 CLAREMONT, NC
 US 28613
 Contact: BRUCE JAMES
 bruce.a.james@saint-gobain.com
 T: (828)459-3320
 F: (828)459-3329

To discuss this sample report, contact Customer Service at 1-800-237-1369.

* - Denotes test methods that are outside of the ISO 17025 scope of accreditation.

Statements of conformity to specifications are based on the simple acceptance decision rule (JCGM 106:2012)