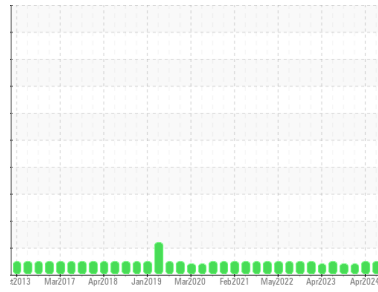


OIL ANALYSIS REPORT

Sample Rating Trend



NORMAL



Machine Id

L-7 130 DIST

Component

Gearbox

Fluid

PETRO CANADA ENDURATEX EP 220 (70 GAL)

DIAGNOSIS

Recommendation

Resample at the next service interval to monitor.

Wear

All component wear rates are normal.

Contamination

There is no indication of any contamination in the oil.

Fluid Condition

The AN level is acceptable for this fluid. The condition of the oil is suitable for further service.

SAMPLE INFORMATION

	method	limit/base	current	history1	history2
Sample Number	Client Info		PCA0116778	PCA0116752	PCA0116735
Sample Date	Client Info		09 Jul 2024	08 Apr 2024	22 Jan 2024
Machine Age	hrs	Client Info	0	0	0
Oil Age	hrs	Client Info	0	0	0
Oil Changed	Client Info		N/A	N/A	N/A
Sample Status			NORMAL	NORMAL	ABNORMAL

CONTAMINATION

	method	limit/base	current	history1	history2
Water	WC Method	>0.2	NEG	NEG	NEG

WEAR METALS

	method	limit/base	current	history1	history2
PQ	ASTM D8184		16	16	19
Iron	ppm	ASTM D5185m >200	9	27	30
Chromium	ppm	ASTM D5185m >15	0	0	0
Nickel	ppm	ASTM D5185m >15	0	0	0
Titanium	ppm	ASTM D5185m	0	0	<1
Silver	ppm	ASTM D5185m	0	0	0
Aluminum	ppm	ASTM D5185m >25	0	0	0
Lead	ppm	ASTM D5185m >100	0	0	0
Copper	ppm	ASTM D5185m >200	0	0	<1
Tin	ppm	ASTM D5185m >25	0	<1	0
Vanadium	ppm	ASTM D5185m	0	0	0
Cadmium	ppm	ASTM D5185m	0	0	0

ADDITIVES

	method	limit/base	current	history1	history2
Boron	ppm	ASTM D5185m 60	21	15	16
Barium	ppm	ASTM D5185m 0	0	0	0
Molybdenum	ppm	ASTM D5185m 0	0	0	<1
Manganese	ppm	ASTM D5185m 0	0	<1	<1
Magnesium	ppm	ASTM D5185m 0	2	0	0
Calcium	ppm	ASTM D5185m 0	2	0	0
Phosphorus	ppm	ASTM D5185m 270	424	418	405
Zinc	ppm	ASTM D5185m 0	3	10	12
Sulfur	ppm	ASTM D5185m 11200	6261	6102	5617

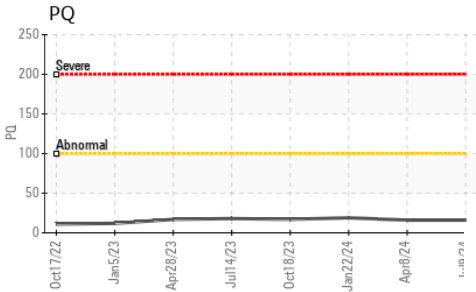
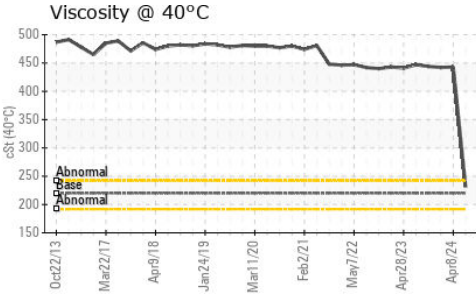
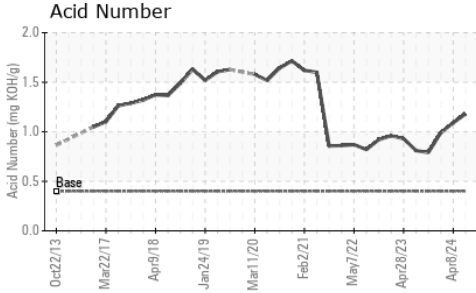
CONTAMINANTS

	method	limit/base	current	history1	history2
Silicon	ppm	ASTM D5185m >50	6	<1	<1
Sodium	ppm	ASTM D5185m	1	<1	0
Potassium	ppm	ASTM D5185m >20	0	0	0

FLUID DEGRADATION

	method	limit/base	current	history1	history2
Acid Number (AN)	mg KOH/g	ASTM D8045 0.40	1.18	1.09	0.99

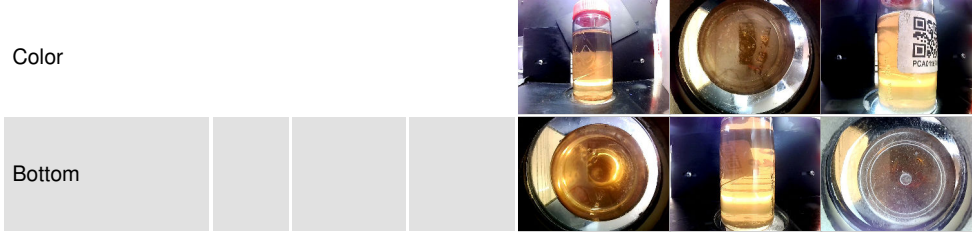
OIL ANALYSIS REPORT



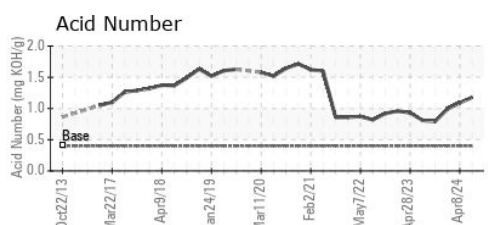
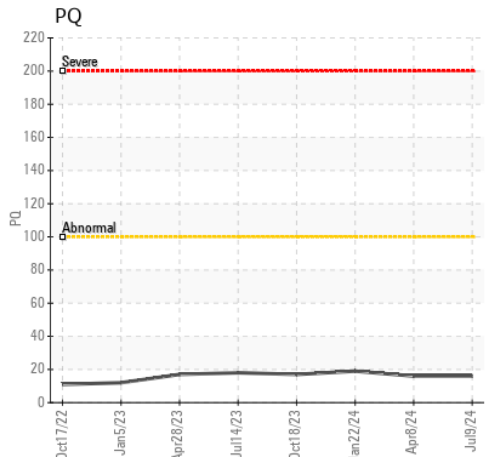
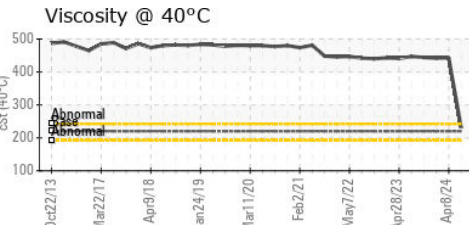
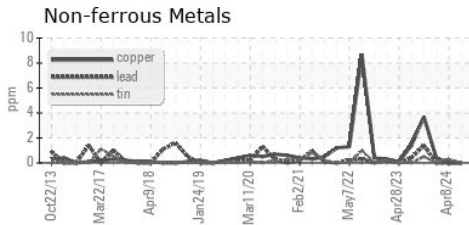
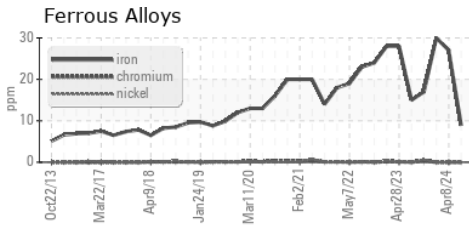
VISUAL	method	limit/base	current	history1	history2	
White Metal	scalar	*Visual	NONE	NONE	NONE	
Yellow Metal	scalar	*Visual	NONE	NONE	NONE	
Precipitate	scalar	*Visual	NONE	NONE	NONE	
Silt	scalar	*Visual	NONE	NONE	NONE	
Debris	scalar	*Visual	NONE	LIGHT	NONE	▲ MODER
Sand/Dirt	scalar	*Visual	NONE	NONE	NONE	
Appearance	scalar	*Visual	NORML	NORML	NORML	
Odor	scalar	*Visual	NORML	NORML	NORML	
Emulsified Water	scalar	*Visual	>0.2	NEG	NEG	NEG
Free Water	scalar	*Visual		NEG	NEG	NEG

FLUID PROPERTIES	method	limit/base	current	history1	history2	
Visc @ 40°C	cSt	ASTM D445	220	231	443	442

SAMPLE IMAGES	method	limit/base	current	history1	history2
---------------	--------	------------	---------	----------	----------



GRAPHS



Certificate L2367

Laboratory : WearCheck USA - 501 Madison Ave., Cary, NC 27513
Sample No. : PCA0116778
Lab Number : 06236205
Unique Number : 11125039
Test Package : PLANT

Received : 15 Jul 2024
Tested : 16 Jul 2024
Diagnosed : 16 Jul 2024 - Wes Davis

CERTAINTED VINYL PLANT
 2651 PENNY RD
 CLAREMONT, NC
 US 28613
 Contact: BRUCE JAMES
 bruce.a.james@saint-gobain.com
 T: (828)459-3320
 F: (828)459-3329

To discuss this sample report, contact Customer Service at 1-800-237-1369.

* - Denotes test methods that are outside of the ISO 17025 scope of accreditation.

Statements of conformity to specifications are based on the simple acceptance decision rule (JCGM 106:2012)