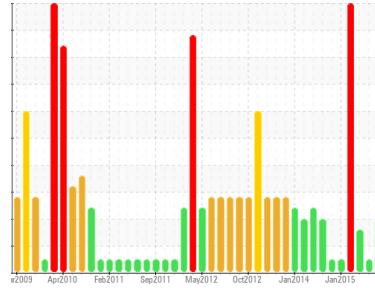


# OIL ANALYSIS REPORT



Area  
**KEMP QUARRIES / PRYOR STONE [15285286001]**  
Machine Id  
**WL049**  
Component  
**Diesel Engine**  
Fluid  
**MOBIL DELVAC 1300 SUPER15W40 (--- GAL)**

Sample Rating Trend



**SOOT**



## DIAGNOSIS

### Recommendation

We advise that you check for faulty combustion, plugged air filters, or aftercoolers. We recommend that you drain the oil from the component if this has not already been done. We recommend an early resample to monitor this condition.

### Wear

All component wear rates are normal.

### Contamination

There is an abnormal amount of solids and carbon present in the oil. The water content is negligible.

### Fluid Condition

The oil is no longer serviceable due to the presence of contaminants.

## SAMPLE INFORMATION

	method	limit/base	current	history1	history2
Sample Number	Client Info		<b>PCA85286001</b>	PCA51304016	PCA76267029
Sample Date	Client Info		<b>28 Sep 2015</b>	17 Aug 2015	11 Jun 2015
Machine Age	hrs	Client Info	<b>32864</b>	32543	32137
Oil Age	hrs	Client Info	<b>---</b>	406	---
Oil Changed	Client Info		<b>N/A</b>	N/A	N/A
Sample Status			<b>SEVERE</b>	NORMAL	ABNORMAL

## CONTAMINATION

	method	limit/base	current	history1	history2
Fuel	WC Method		<b>&lt;1.0</b>	<1.0	<1.0

## WEAR METALS

	method	limit/base	current	history1	history2
Iron	ppm	ASTM D5185(m)	<b>23</b>	20	27
Chromium	ppm	ASTM D5185(m)	<b>0</b>	0	0
Nickel	ppm	ASTM D5185(m)	<b>0</b>	0	0
Titanium	ppm	ASTM D5185(m)	<b>0</b>	0	0
Silver	ppm	ASTM D5185(m)	<b>0</b>	0	0
Aluminum	ppm	ASTM D5185(m)	<b>1</b>	1	1
Lead	ppm	ASTM D5185(m)	<b>0</b>	1	0
Copper	ppm	ASTM D5185(m)	<b>5</b>	6	13
Tin	ppm	ASTM D5185(m)	<b>0</b>	0	1
Vanadium	ppm	ASTM D5185(m)	<b>0</b>	0	0

## ADDITIVES

	method	limit/base	current	history1	history2
Boron	ppm	ASTM D5185(m)	<b>30</b>	35	27
Barium	ppm	ASTM D5185(m)	<b>0</b>	0	0
Molybdenum	ppm	ASTM D5185(m)	<b>49</b>	53	50
Magnesium	ppm	ASTM D5185(m)	<b>821</b>	894	817
Calcium	ppm	ASTM D5185(m)	<b>1241</b>	1417	1398
Phosphorus	ppm	ASTM D5185(m)	<b>890</b>	999	931
Zinc	ppm	ASTM D5185(m)	<b>1063</b>	1197	1170

## CONTAMINANTS

	method	limit/base	current	history1	history2
Silicon	ppm	ASTM D5185(m)	<b>6</b>	8	▲ 17
Sodium	ppm	ASTM D5185(m)	<b>6</b>	7	6
Potassium	ppm	ASTM D5185(m)	<b>0</b>	0	0
Water	%	ASTM D6304*	<b>0</b>	0	0
Glycol	%	ASTM D7922*	<b>0.0</b>	0.0	0.0

## INFRA-RED

	method	limit/base	current	history1	history2
Soot %	%	ASTM D7844*	<b>2.85</b>	2.17	2.46

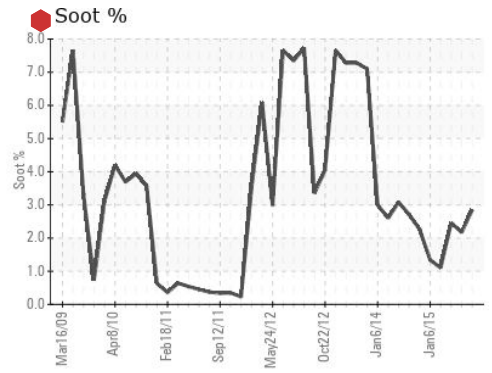
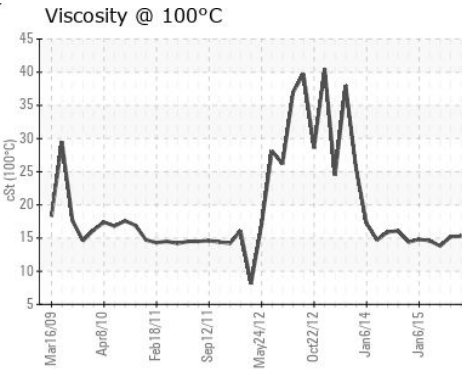
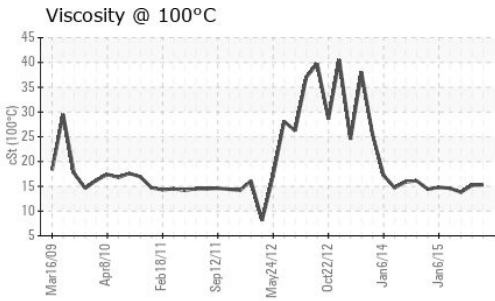
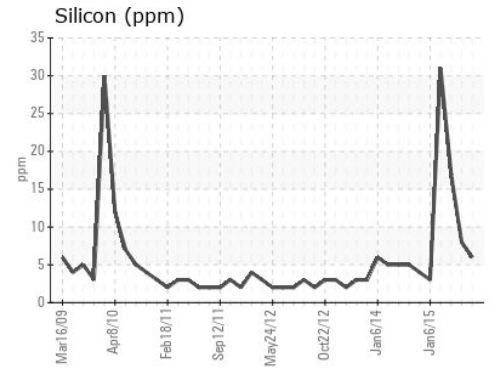
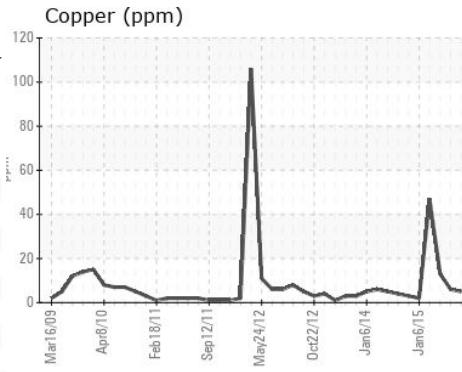
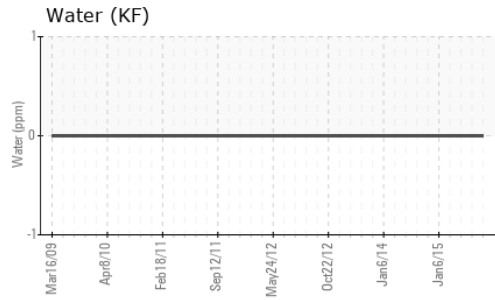
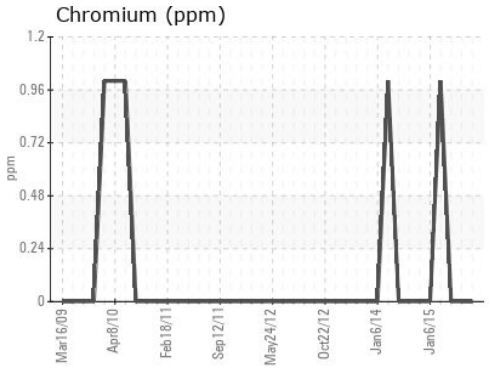
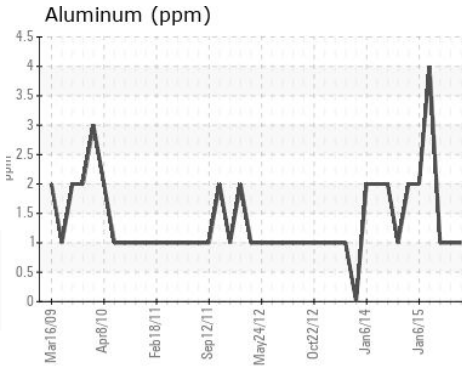
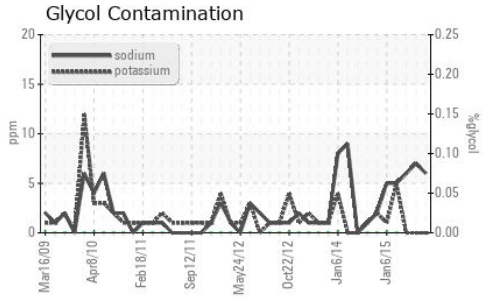
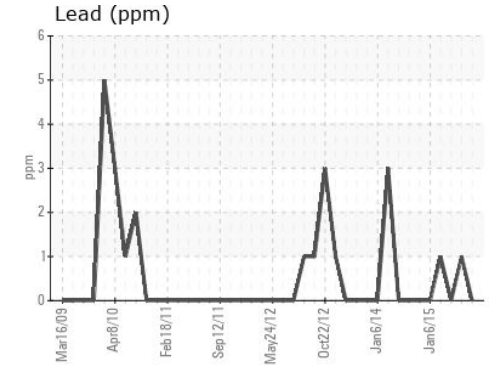
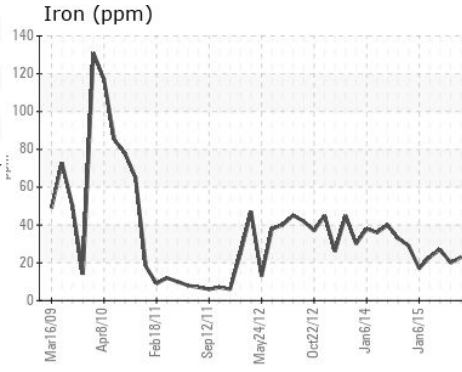
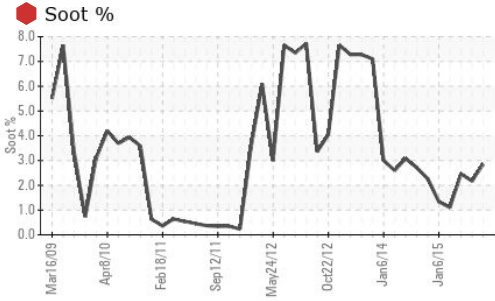
## FLUID DEGRADATION

	method	limit/base	current	history1	history2
Oxidation	Abs./1mm	ASTM D7414*	<b>5</b>	1	8

## FLUID PROPERTIES

	method	limit/base	current	history1	history2
Visc @ 100°C	cSt	ASTM D7279(m)	<b>15.3</b>	15.2	13.8

## GRAPHS



**Laboratory** : WearCheck -  
**Sample No.** : PCA85286001 **Received** : 13 Oct 2015  
**Lab Number** : 85286001 **Diagnosed** : 05 Jun 2019  
**Unique Number** : 12894933 **Diagnostician** : Wes Davis  
**Test Package** : MOB1+ ( Additional Tests: FT-IR, Glycol, ICP, KF, KV100 )  
*To discuss this sample report, contact Customer Service at 1-800-268-2131.*  
*Test denoted (\*) outside scope of accreditation, (m) method modified, (e) tested at external lab.*  
*Validity of results and interpretation are based on the sample and information as supplied.*

**Kemp Quarries - Pryor Stone - Pryor**  
 1050 E 520 Rd  
 Pryor, OK  
 US 74361  
 Contact:  
 pryor@pryorstone.com  
 T:  
 F: