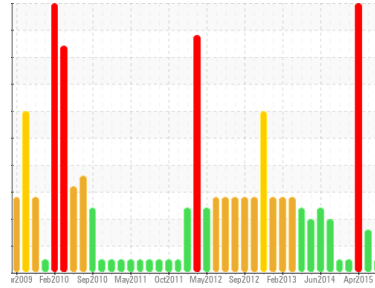


# OIL ANALYSIS REPORT

Sample Rating Trend



**NORMAL**



Area  
**KEMP QUARRIES / PRYOR STONE [15251304016]**  
Machine Id  
**WLO49**  
Component  
**Diesel Engine**  
Fluid  
**MOBIL DELVAC 1300 SUPER15W40 (--- GAL)**

## DIAGNOSIS

### Recommendation

Resample at the next service interval to monitor.

### Wear

All component wear rates are normal.

### Contamination

The water content is negligible. There is no indication of any contamination in the oil.

### Fluid Condition

The condition of the oil is acceptable for the time in service.

## SAMPLE INFORMATION

	method	limit/base	current	history1	history2
Sample Number	Client Info		<b>PCA51304016</b>	PCA76267029	PCA20452060
Sample Date	Client Info		<b>17 Aug 2015</b>	11 Jun 2015	10 Apr 2015
Machine Age	hrs	Client Info	<b>32543</b>	32137	31706
Oil Age	hrs	Client Info	<b>406</b>	---	350
Oil Changed	Client Info		<b>N/A</b>	N/A	N/A
Sample Status			<b>NORMAL</b>	ABNORMAL	SEVERE

## CONTAMINATION

	method	limit/base	current	history1	history2
Fuel	WC Method		<b>&lt;1.0</b>	<1.0	<1.0

## WEAR METALS

	method	limit/base	current	history1	history2
Iron	ppm	ASTM D5185(m)	<b>20</b>	27	23
Chromium	ppm	ASTM D5185(m)	<b>0</b>	0	1
Nickel	ppm	ASTM D5185(m)	<b>0</b>	0	0
Titanium	ppm	ASTM D5185(m)	<b>0</b>	0	0
Silver	ppm	ASTM D5185(m)	<b>0</b>	0	0
Aluminum	ppm	ASTM D5185(m)	<b>1</b>	1	4
Lead	ppm	ASTM D5185(m)	<b>1</b>	0	1
Copper	ppm	ASTM D5185(m)	<b>6</b>	13	47
Tin	ppm	ASTM D5185(m)	<b>0</b>	1	0
Vanadium	ppm	ASTM D5185(m)	<b>0</b>	0	0

## ADDITIVES

	method	limit/base	current	history1	history2
Boron	ppm	ASTM D5185(m)	<b>35</b>	27	58
Barium	ppm	ASTM D5185(m)	<b>0</b>	0	0
Molybdenum	ppm	ASTM D5185(m)	<b>53</b>	50	53
Magnesium	ppm	ASTM D5185(m)	<b>894</b>	817	673
Calcium	ppm	ASTM D5185(m)	<b>1417</b>	1398	2023
Phosphorus	ppm	ASTM D5185(m)	<b>999</b>	931	1204
Zinc	ppm	ASTM D5185(m)	<b>1197</b>	1170	1293

## CONTAMINANTS

	method	limit/base	current	history1	history2
Silicon	ppm	ASTM D5185(m)	<b>8</b>	▲ 17	● 31
Sodium	ppm	ASTM D5185(m)	<b>7</b>	6	5
Potassium	ppm	ASTM D5185(m)	<b>0</b>	0	5
Water	%	ASTM D6304*	<b>0</b>	0	0
Glycol	%	ASTM D7922*	<b>0.0</b>	0.0	0.0

## INFRA-RED

	method	limit/base	current	history1	history2
Soot %	%	ASTM D7844*	<b>2.17</b>	2.46	1.1

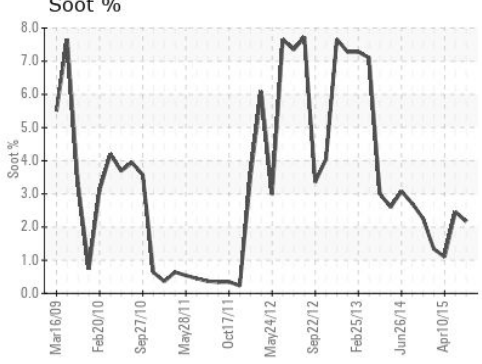
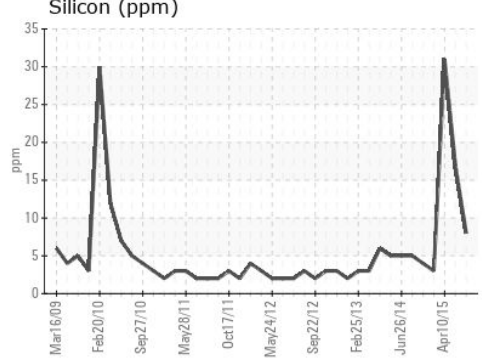
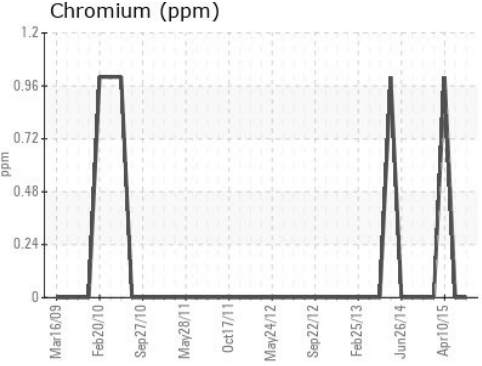
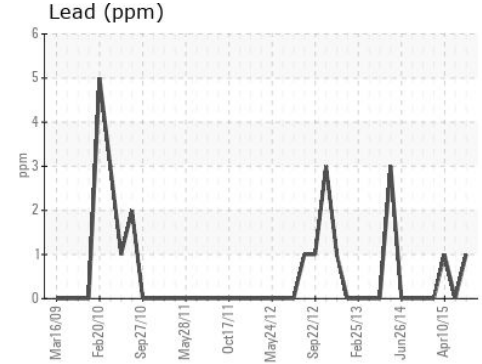
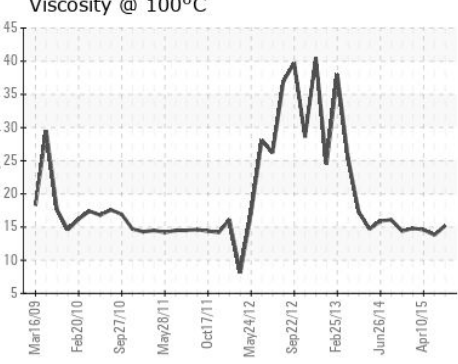
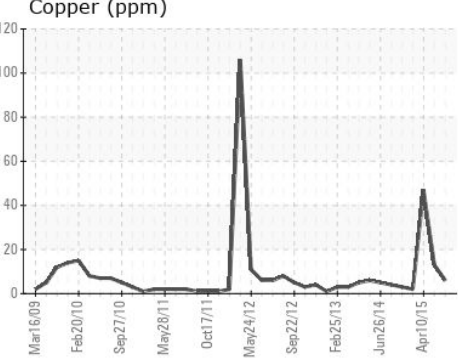
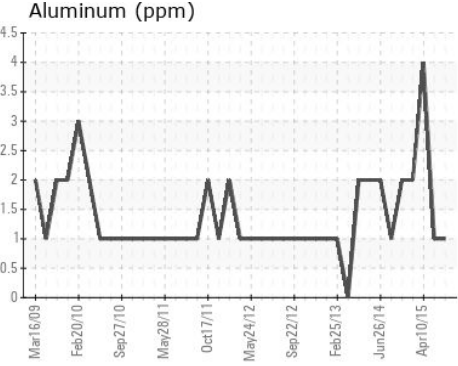
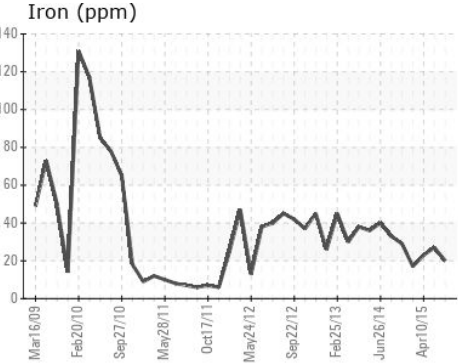
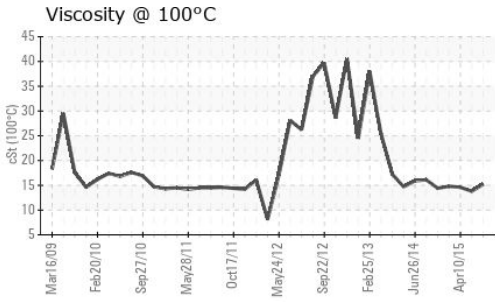
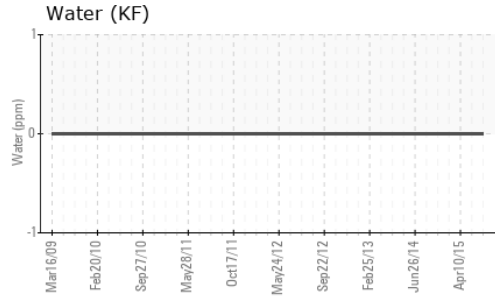
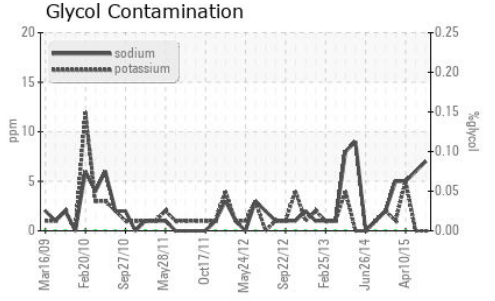
## FLUID DEGRADATION

	method	limit/base	current	history1	history2
Oxidation	Abs./1mm	ASTM D7414*	<b>1</b>	8	1

## FLUID PROPERTIES

	method	limit/base	current	history1	history2
Visc @ 100°C	cSt	ASTM D7279(m)	<b>15.2</b>	13.8	14.6

## GRAPHS



**Laboratory** : WearCheck -  
**Sample No.** : PCA51304016  
**Lab Number** : **51304016**  
**Unique Number** : 12896900  
**Test Package** : MOB1+ ( Additional Tests: FT-IR, Glycol, ICP, KF, KV100 )  
*To discuss this sample report, contact Customer Service at 1-800-268-2131.*  
*Test denoted (\*) outside scope of accreditation, (m) method modified, (e) tested at external lab.*  
*Validity of results and interpretation are based on the sample and information as supplied.*

**Received** : 08 Sep 2015  
**Diagnosed** : 05 Jun 2019  
**Diagnostician** : Wes Davis

**Kemp Quarries - Pryor Stone - Pryor**  
 1050 E 520 Rd  
 Pryor, OK  
 US 74361  
 Contact:  
 pryor@pryorstone.com  
 T:  
 F: