



CONSTRUCTION EQUIPMENT

8000141337 VOLVO L120H 632069 - COOLANT



Sample No: VCP208754
Oil Type: VOLVO COOLANT VCS (YELLOW)
Job No: 8000141337



SAMPLE INFORMATION

Sample Number	VCP208754	---	---	---
Sample Date	30 Jan 2018	---	---	---
Machine Hours	6034	---	---	---
Sample Status	ABNORMAL	---	---	---

STRONGCO EQUIP (AB)

6 - 38403 BURNT LAKE TRAIL
RED DEER COUNTY, AB
CA T4S 2L4

Contact: Perry Doyle
pdoyle@strongco.com
T: (403)391-3520
F: (403)346-3487



COOLANT CONDITION

Boron	ppm	█ 14	---	---	---
Phosphorus	ppm	█ 4	---	---	---
Sodium	ppm	█ 3055	---	---	---
Potassium	ppm	█ 339	---	---	---
Silicon	ppm	█ 94	---	---	---
pH	Scale 0-14	█ 7.08	---	---	---
Reserve Alkalinity	Scale 0-20	█ 2.5	---	---	---
Molybdenum	ppm	█ 61	---	---	---
Nitrites	ppm	█ 360	---	---	---
Percentage Glycol	%	█ 57.0	---	---	---
Freezing Point	°C	█ -47	---	---	---

Diagnosis

The coolant change at the time of sampling has been noted. We recommend an early resample to monitor this condition. Copper ppm levels are abnormal. The high metal levels indicate corrosion in the system. There is no indication of any contamination in the coolant. The pH level of this fluid is within the acceptable limits. The reserve alkalinity of this fluid is acceptable.



CONTAMINATION

Magnesium	ppm	█ 5	---	---	---
Calcium	ppm	█ 25	---	---	---
Coolant Appearance		█ Clear	---	---	---
Coolant Color		█ Yellow	---	---	---
Sand/Dirt	scalar	█ NONE	---	---	---
Debris	scalar	█ NONE	---	---	---
Precipitate	scalar	█ NONE	---	---	---
Silt	scalar	█ NONE	---	---	---



CORROSION

Iron	ppm	█ <1	---	---	---
Aluminum	ppm	█ 1	---	---	---
Copper	ppm	▲ 26	---	---	---
Lead	ppm	█ 0	---	---	---
Tin	ppm	█ 0	---	---	---

Depot: VOLVO9652
Unique No: 4639065
Signed: Kevin Marson
Report Date: 02 Feb 2018

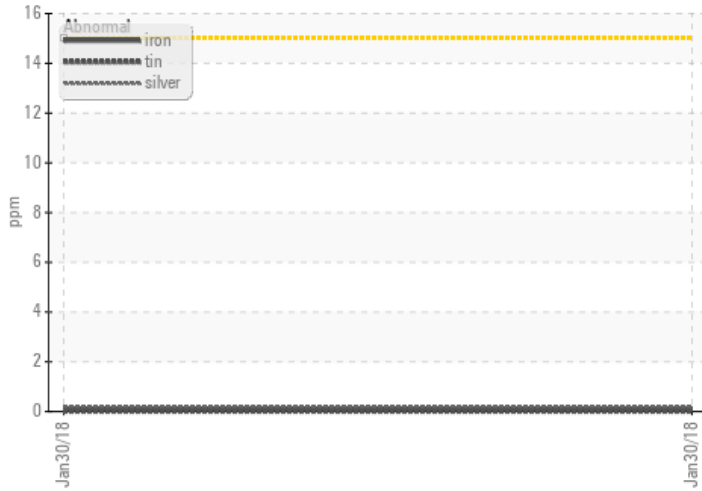


CONSTRUCTION EQUIPMENT

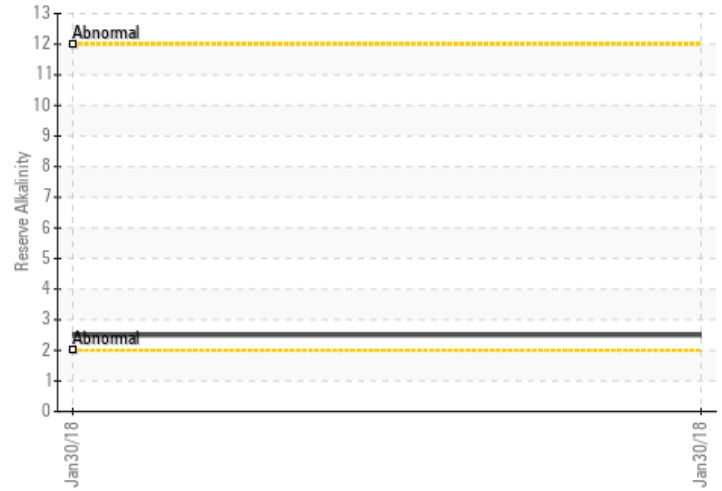


GRAPHS

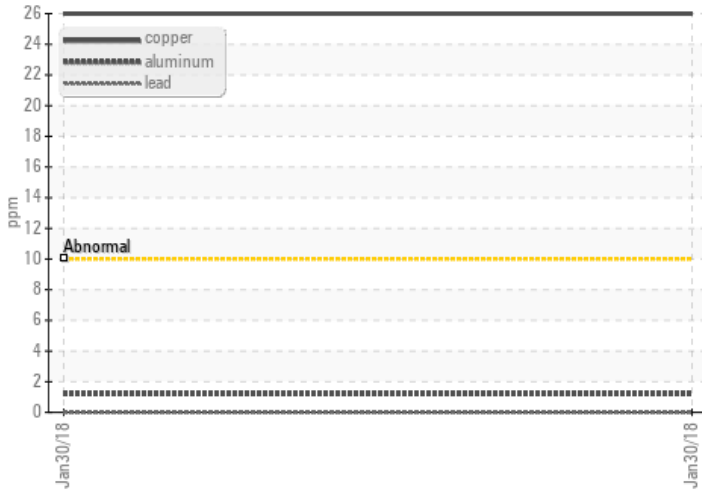
Iron/Tin/Silver



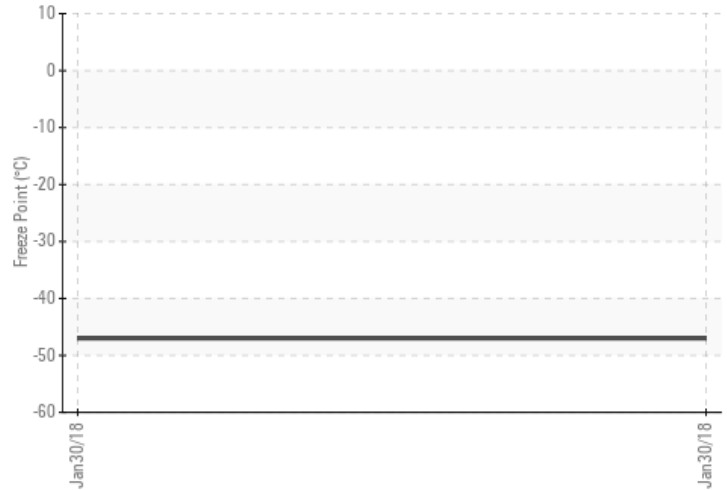
Reserve Alkalinity



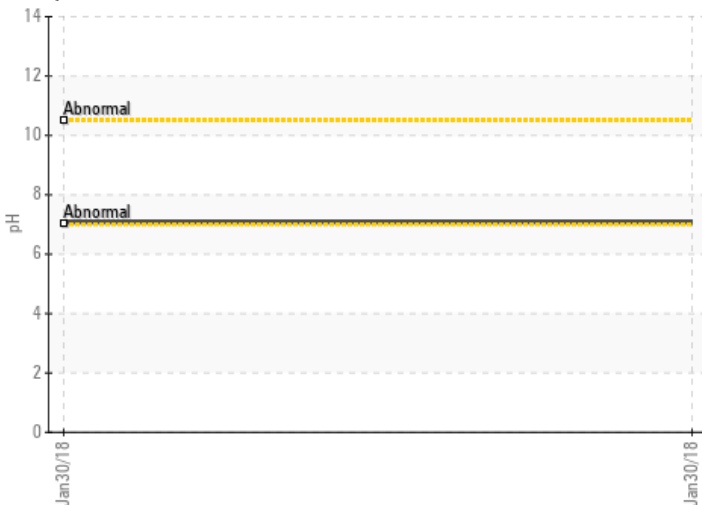
Copper/Aluminum/Lead



Freeze Point



pH



Nitrites

