



CONSTRUCTION EQUIPMENT

158596 VOLVO A25E 73627 - COOLANT



Sample No: WC203701
Oil Type: EXTENDED LIFE COOLANT
Job No: 158596



SAMPLE INFORMATION

Sample Number	WC203701	---	---	---
Sample Date	01 Mar 2018	---	---	---
Machine Hours	12275	---	---	---
Sample Status	NORMAL	---	---	---

STRONGCO INC

1730 RUE DE L'HYDRO
 VAL D'OR, QC
 CA J9P 6Z2

Contact: Pierre Gauthier
 pgauthier@strongco.com

T:
 F: (819)825-1360



COOLANT CONDITION

Boron	ppm	█ 54	---	---	---
Phosphorus	ppm	█ <1	---	---	---
Sodium	ppm	█ 2419	---	---	---
Potassium	ppm	█ 228	---	---	---
Silicon	ppm	█ 29	---	---	---
pH	Scale 0-14	█ 8.18	---	---	---
Reserve Alkalinity	Scale 0-20	█ 3.6	---	---	---
Molybdenum	ppm	█ <1	---	---	---
Nitrites	ppm	█ 520	---	---	---
Percentage Glycol	%	█ 50.0	---	---	---
Freezing Point	°C	█ -37	---	---	---

Diagnosis

We recommend that you drain the system and refill with a 50/50 long-life coolant/water mixture. Resample at the next service interval to monitor. All metal levels are normal indicating no corrosion in the cooling system. There is no indication of any contamination in the coolant. The coolant is cloudy indicating either an overconcentration of coolant additives, or a mixing of incompatible coolant technologies. The nitrite level is acceptable. The pH level of this fluid is within the acceptable limits. The reserve alkalinity of this fluid is acceptable.



CONTAMINATION

Magnesium	ppm	█ 3	---	---	---
Calcium	ppm	█ 20	---	---	---
Coolant Appearance		Cloudy	---	---	---
Coolant Color		Orange	---	---	---
Sand/Dirt	scalar	█ NONE	---	---	---
Debris	scalar	█ NONE	---	---	---
Precipitate	scalar	█ NONE	---	---	---
Silt	scalar	█ NONE	---	---	---



CORROSION

Iron	ppm	█ 0	---	---	---
Aluminum	ppm	█ 0	---	---	---
Copper	ppm	█ 0	---	---	---
Lead	ppm	█ <1	---	---	---
Tin	ppm	█ 0	---	---	---

Depot: VOLVO0229
Unique No: 4718067
Signed: Kevin Marson
Report Date: 09 Jul 2018

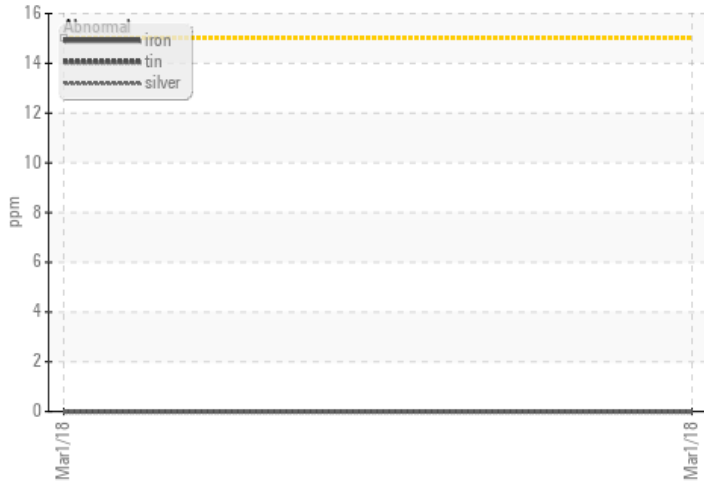


CONSTRUCTION EQUIPMENT

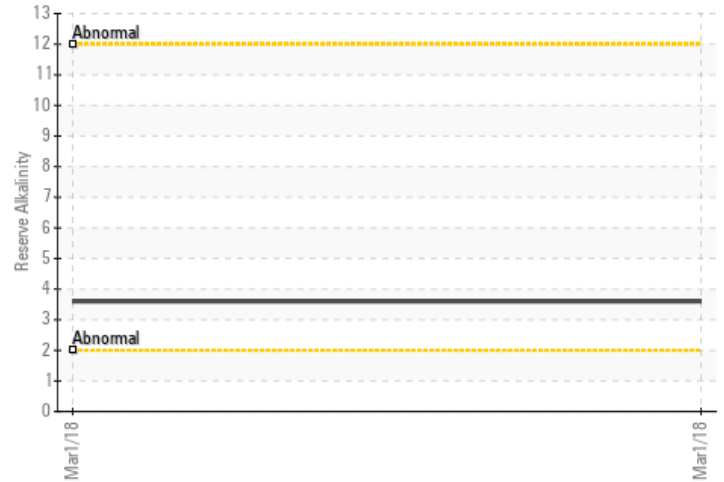


GRAPHS

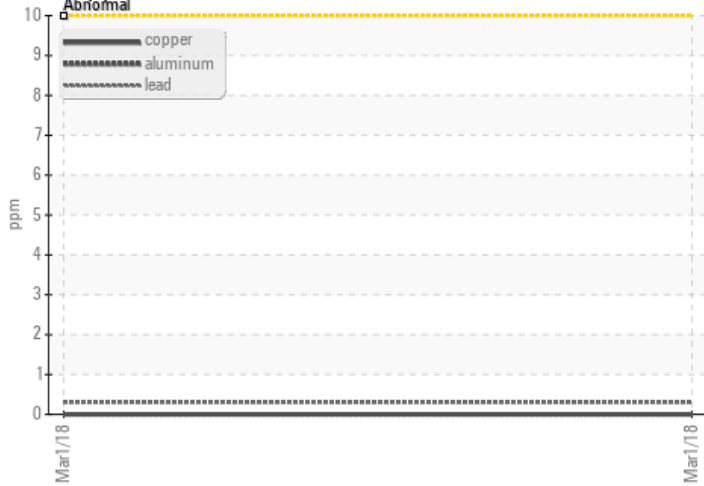
Iron/Tin/Silver



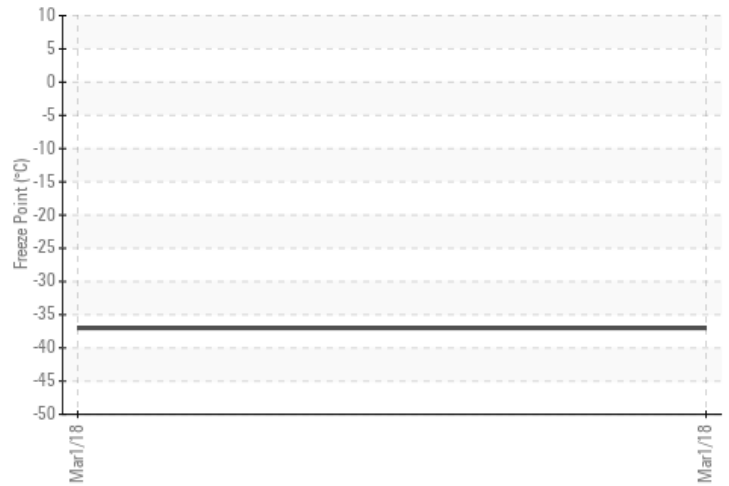
Reserve Alkalinity



Copper/Aluminum/Lead



Freeze Point



pH



Nitrites

