



CONSTRUCTION EQUIPMENT

VOLVO EC300EL 312491 - COOLANT



Sample No: VCE202868
Oil Type: VOLVO COOLANT VCS (YELLOW)
Job No:



STRONGCO EQUIPMENT INC. - MOUNT PEARL
 54 GLENCO DRIVE
 MOUNT PEARL, NL
 CA A1N 4S9
 Contact: Jeff Hillier
 jhillier@strongco.com
 T: (709)747-4026
 F: (709)747-4059



SAMPLE INFORMATION

Sample Number	VCE202868	---	---	---
Sample Date	24 Dec 2019	---	---	---
Machine Hours	210	---	---	---
Sample Status	ABNORMAL	---	---	---



COOLANT CONDITION

Boron	ppm	33	---	---	---
Phosphorus	ppm	47	---	---	---
Sodium	ppm	2678	---	---	---
Potassium	ppm	465	---	---	---
Silicon	ppm	4	---	---	---
pH	Scale 0-14	8.13	---	---	---
Reserve Alkalinity	Scale 0-20	4.7	---	---	---
Molybdenum	ppm	2	---	---	---
Nitrites	ppm	280	---	---	---
Percentage Glycol	%	47.0	---	---	---
Freezing Point	°C	-33	---	---	---

Diagnosis

We recommend that you perform a partial drain and top off with straight water to decrease abnormal level of overconcentrated antifreeze. Resample at the next service interval to monitor. All metal levels are normal indicating no corrosion in the cooling system. There is no indication of any contamination in the coolant. The nitrites levels are too high which leads to additive drop-out and scale formation. The reserve alkalinity of this fluid is higher than acceptable indicating the coolant is over-concentrated. The pH level of this fluid is within the acceptable limits.



CONTAMINATION

Magnesium	ppm	4	---	---	---
Calcium	ppm	17	---	---	---
Coolant Appearance		Clear	---	---	---
Coolant Color		Yellow	---	---	---
Sand/Dirt	scalar	NONE	---	---	---
Debris	scalar	NONE	---	---	---
Precipitate	scalar	NONE	---	---	---
Silt	scalar	NONE	---	---	---



CORROSION

Iron	ppm	<1	---	---	---
Aluminum	ppm	2	---	---	---
Copper	ppm	1	---	---	---
Lead	ppm	<1	---	---	---
Tin	ppm	<1	---	---	---

Depot: STRMOU
Unique No: 4990886
Signed: Kevin Marson
Report Date: 14 Jan 2020

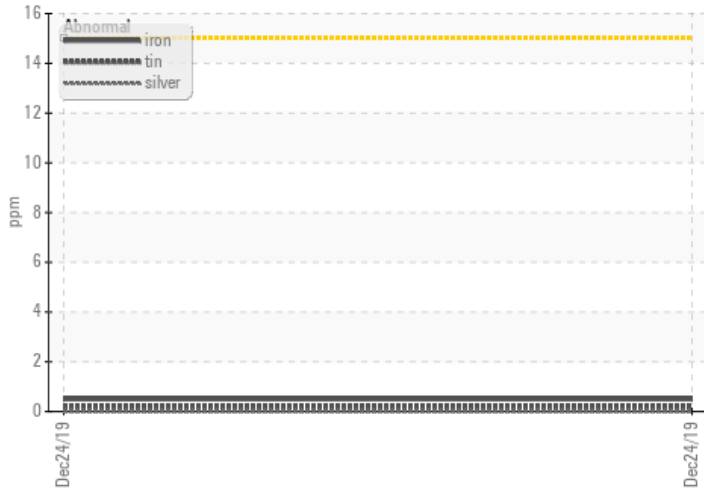


CONSTRUCTION EQUIPMENT

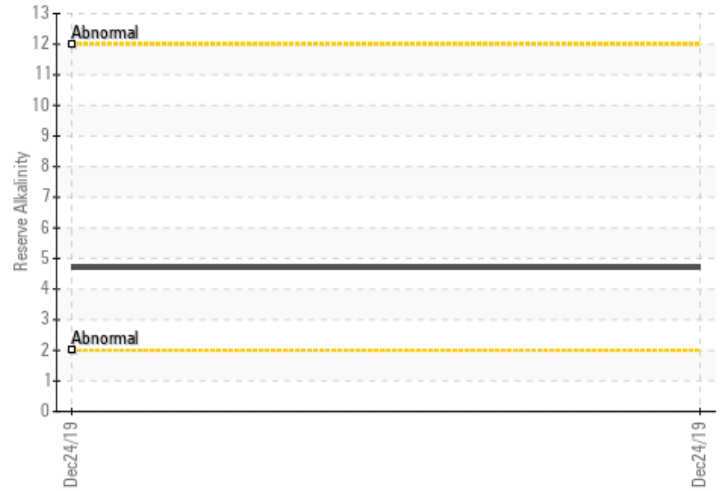


GRAPHS

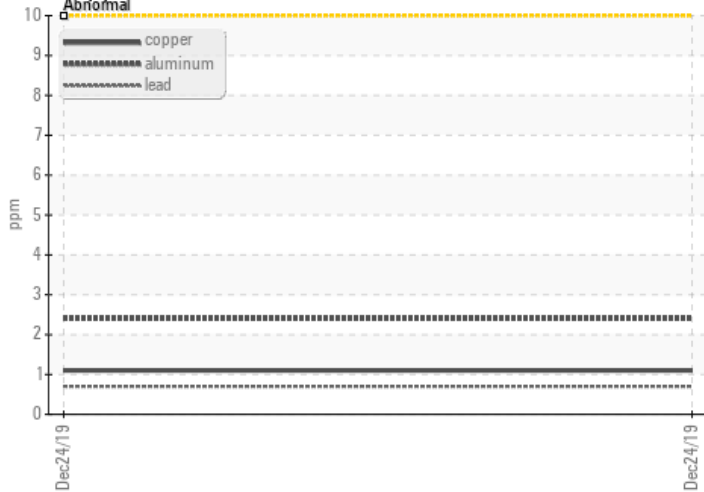
Iron/Tin/Silver



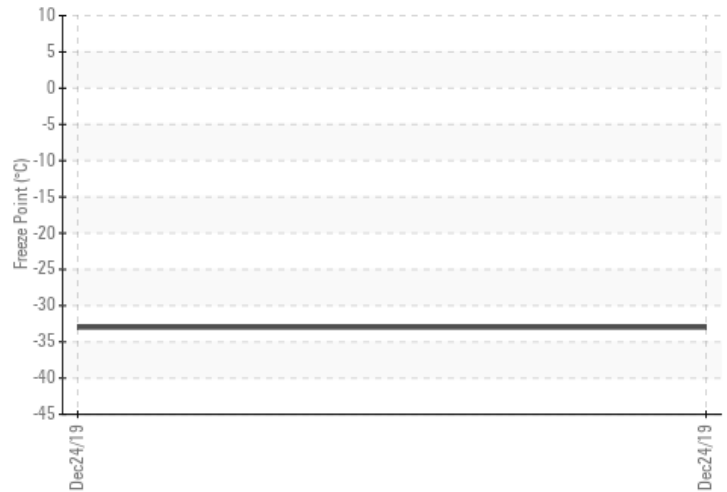
Reserve Alkalinity



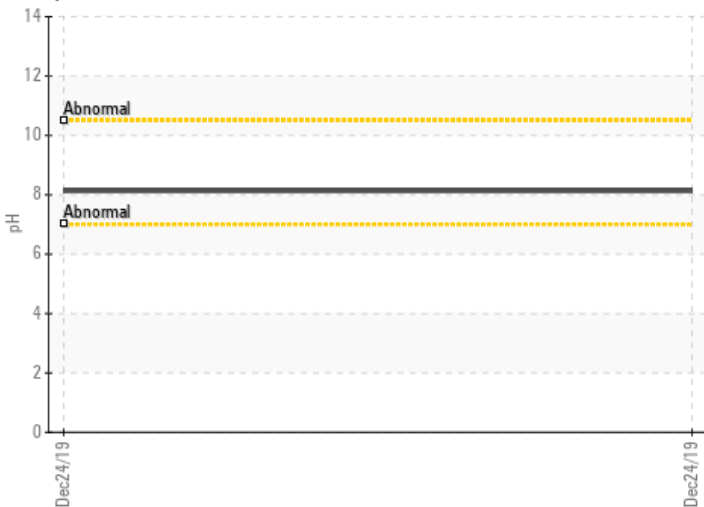
Copper/Aluminum/Lead



Freeze Point



pH



Nitrites

