



CONSTRUCTION EQUIPMENT

02543613 VOLVO L50HS 442254 - COOLANT



Sample No: VCP352936
Oil Type: VOLVO COOLANT VCS (YELLOW)
Job No: 02543613



SAMPLE INFORMATION

Sample Number	VCP352936	---	---	---
Sample Date	02 Mar 2023	---	---	---
Machine Hours	1112	---	---	---
Sample Status	ABNORMAL	---	---	---

STRONGCO EQUIPMENT-EDMONTON

25616 117 Ave NW
 Acheson, AB
 CA T7X 6C2
 Contact: Jonathan Morton
 jmorton@strongco.com
 T: (780)464-1909
 F: (780)464-0434



COOLANT CONDITION

Boron	ppm	■ 13	---	---	---
Phosphorus	ppm	■ 6	---	---	---
Sodium	ppm	■ 3185	---	---	---
Potassium	ppm	■ 260	---	---	---
Silicon	ppm	■ 4	---	---	---
pH	Scale 0-14	■ 6.95	---	---	---
Reserve Alkalinity	Scale 0-20	▲ 6.2	---	---	---
Molybdenum	ppm	■ 1	---	---	---
Nitrites	ppm	▲ 320	---	---	---
Percentage Glycol	%	■ 51.3	---	---	---
Freezing Point	°C	■ -38	---	---	---

Diagnosis

We recommend that you drain the system and refill with a 50/50 long-life coolant/water mixture. Resample at the next service interval to monitor. All metal levels are normal indicating no corrosion in the cooling system. There is no indication of any contamination in the coolant. The coolant is cloudy indicating either an overconcentration of coolant additives, or a mixing of incompatible coolant technologies. The nitrites levels are too high which leads to additive drop-out and scale formation. The reserve alkalinity of this fluid is higher than acceptable indicating the coolant is over-concentrated.



CONTAMINATION

Magnesium	ppm	■ 4	---	---	---
Calcium	ppm	■ 27	---	---	---
Coolant Appearance		▲ Cloudy	---	---	---
Coolant Color		Orange	---	---	---
Sand/Dirt	scalar	■ NONE	---	---	---
Debris	scalar	■ NONE	---	---	---
Precipitate	scalar	■ NONE	---	---	---
Silt	scalar	■ NONE	---	---	---



CORROSION

Iron	ppm	■ 6	---	---	---
Aluminum	ppm	■ 1	---	---	---
Copper	ppm	■ 2	---	---	---
Lead	ppm	■ <1	---	---	---
Tin	ppm	■ 0	---	---	---

Depot: VOLVO3908
Unique No: 5540619
Signed: Kevin Marson
Report Date: 13 Mar 2023

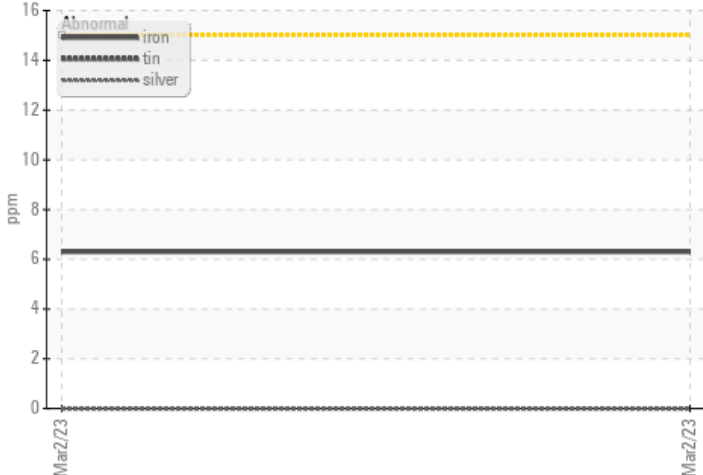


CONSTRUCTION EQUIPMENT

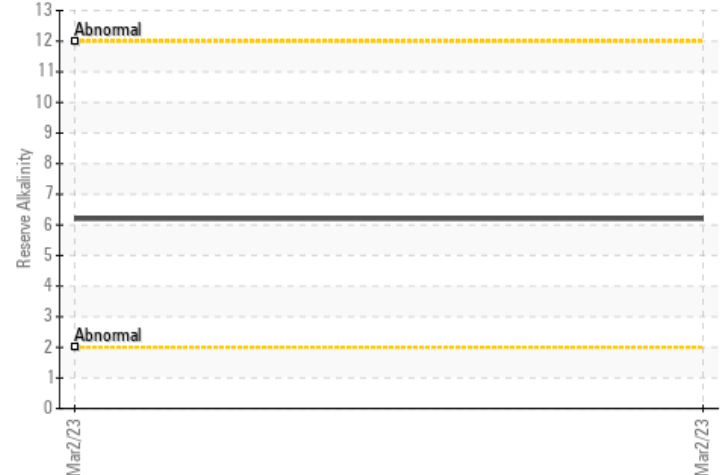


GRAPHS

Iron/Tin/Silver



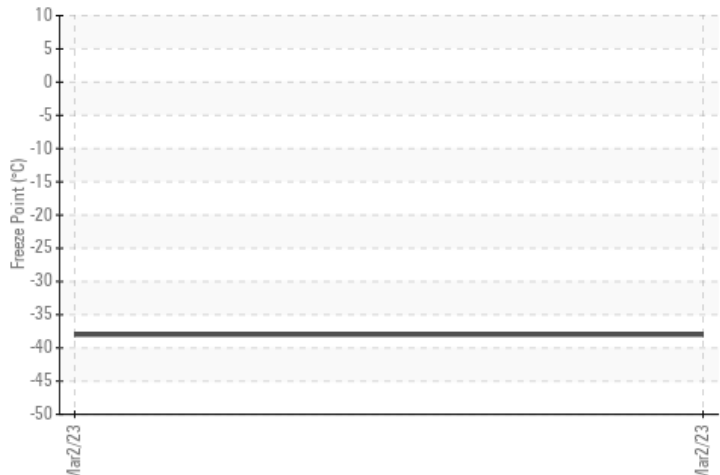
Reserve Alkalinity



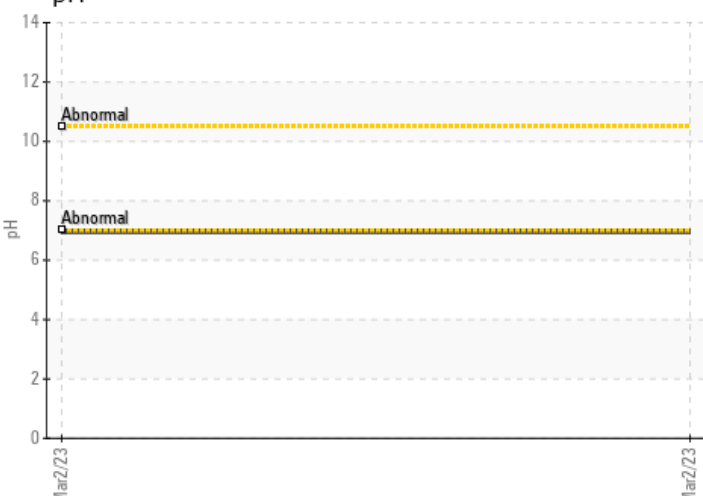
Copper/Aluminum/Lead



Freeze Point



pH



Nitrites

