



CONSTRUCTION EQUIPMENT

TRADE IN 374084 VOLVO EC220EL 310758 - COOLANT



Sample No: VCP380188
Oil Type: VOLVO COOLANT (GREEN)
Job No: 374084



SAMPLE INFORMATION

Sample Number	VCP380188	---	---	---
Sample Date	08 Aug 2023	---	---	---
Machine Hours	8202	---	---	---
Sample Status	ABNORMAL	---	---	---



COOLANT CONDITION

Boron	ppm	146	---	---	---
Phosphorus	ppm	2	---	---	---
Sodium	ppm	2618	---	---	---
Potassium	ppm	308	---	---	---
Silicon	ppm	3	---	---	---
pH	Scale 0-14	7.16	---	---	---
Reserve Alkalinity	Scale 0-20	3.7	---	---	---
Molybdenum	ppm	4	---	---	---
Nitrites	ppm	400	---	---	---
Percentage Glycol	%	63.0	---	---	---
Freezing Point	°C	-62	---	---	---



CONTAMINATION

Magnesium	ppm	2	---	---	---
Calcium	ppm	14	---	---	---
Coolant Appearance		Cloudy	---	---	---
Coolant Color		Grn/Yellow	---	---	---
Sand/Dirt	scalar	NONE	---	---	---
Debris	scalar	NONE	---	---	---
Precipitate	scalar	NONE	---	---	---
Silt	scalar	VLITE	---	---	---



CORROSION

Iron	ppm	2	---	---	---
Aluminum	ppm	2	---	---	---
Copper	ppm	17	---	---	---
Lead	ppm	7	---	---	---
Tin	ppm	2	---	---	---

STRONGCO EQUIPMENT

54 IBER ROAD
OTTAWA, ON
CA K2S 1E8

Contact: Jason Hiles
jhiles@strongco.com

T:
F: (613)836-2614

Diagnosis

We recommend drain system, and refill with 50/50 antifreeze water mixture. We advise that you replenish the supplemental coolant additives (SCAs) and add per manufacturer's specifications. Recommend that you ensure the same technology coolant is being used for make-up. We recommend an early resample to monitor this condition. Copper ppm levels are abnormal. The high metal levels indicate corrosion in the system. There is no indication of any contamination in the component (unconfirmed). The coolant is cloudy indicating either an overconcentration of coolant additives, or a mixing of incompatible coolant technologies. The nitrites levels are too high which leads to additive drop-out and scale formation. The reserve alkalinity of this fluid is higher than acceptable indicating the coolant is over-concentrated. The specific gravity is lower than typical indicating the addition of a different type of coolant. The pH level of this fluid is within the acceptable limits.

Depot: SHESTI
Unique No: 5620316
Signed: Kevin Marson
Report Date: 11 Aug 2023

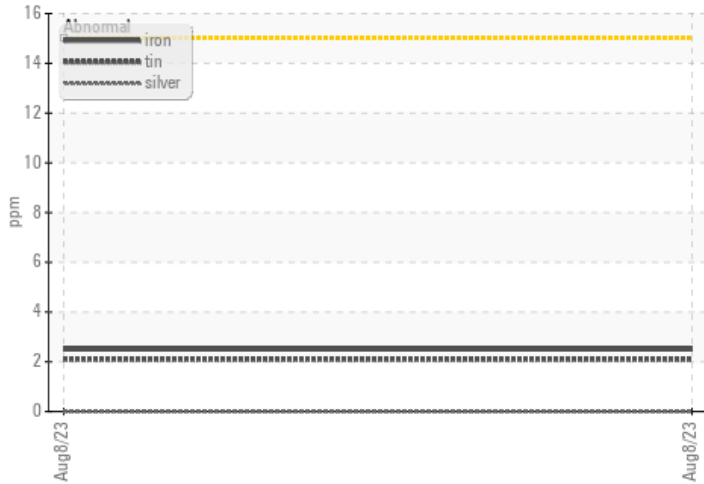


CONSTRUCTION EQUIPMENT

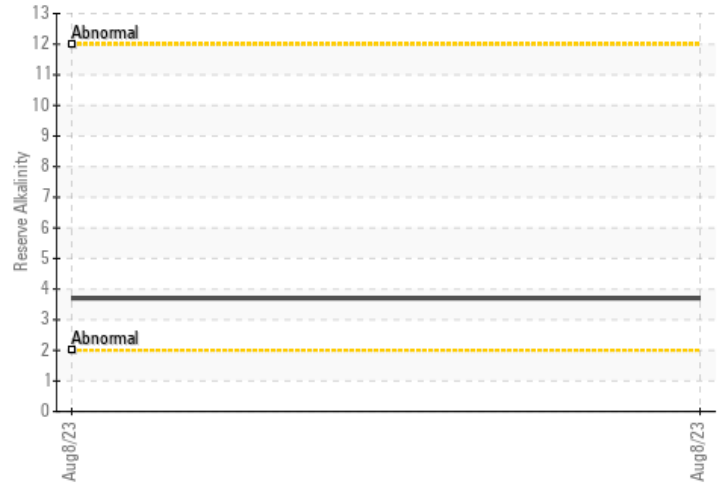


GRAPHS

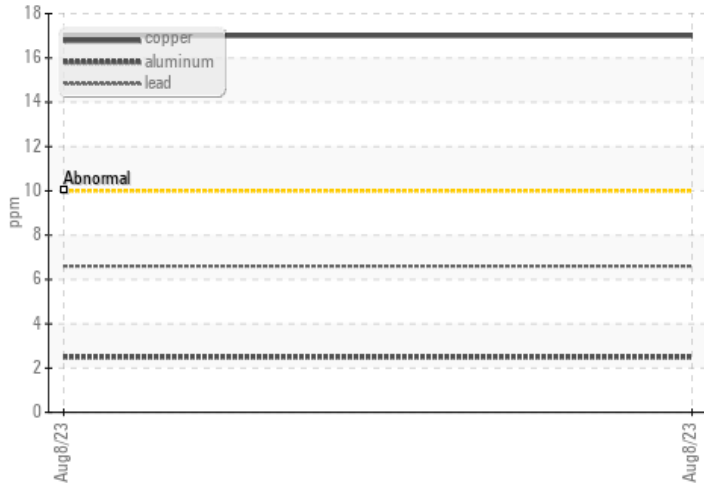
Iron/Tin/Silver



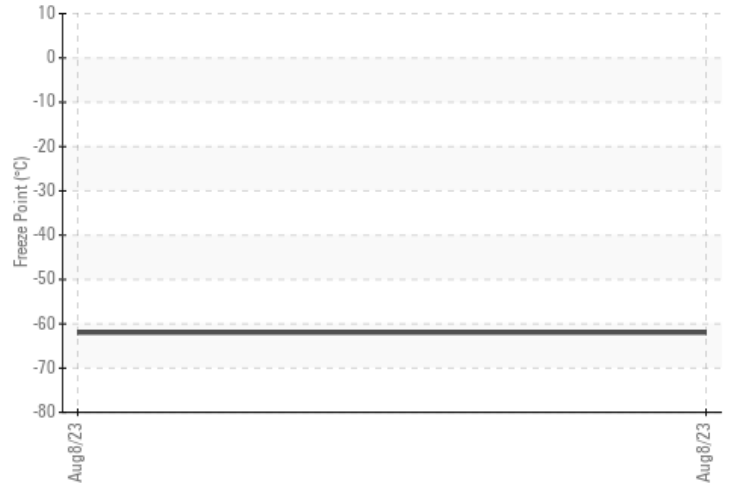
Reserve Alkalinity



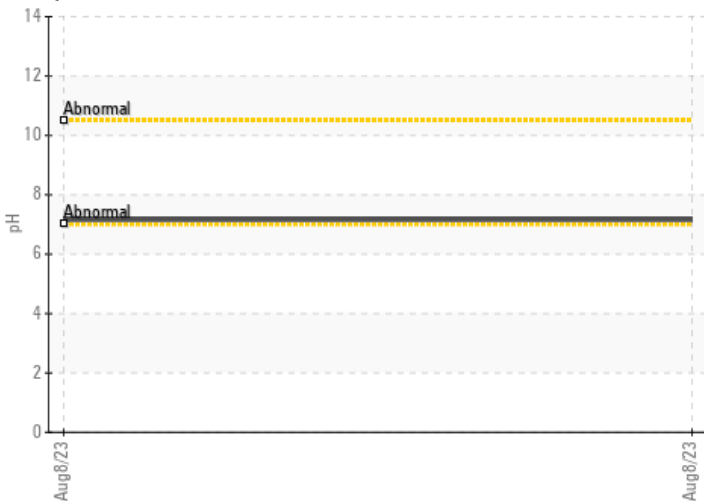
Copper/Aluminum/Lead



Freeze Point



pH



Nitrites

