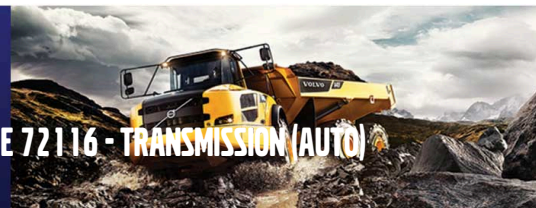




CONSTRUCTION EQUIPMENT

HAMMEL GENERAL CONTRACTING 439707

VOLVO A30E 72116 - TRANSMISSION (AUTO)



Sample No: VCP177133
Oil Type: VOLVO AUTOMATIC TRANSMISSION FLUID AT102
Job No: 439707



SAMPLE INFORMATION

Sample Number	VCP177133	---	---	---
Sample Date	27 Oct 2023	---	---	---
Machine Hours	10046	---	---	---
Oil Hours	0	---	---	---
Oil Changed	Not Chngd	---	---	---
Sample Status	NORMAL	---	---	---

REDHEAD EQUIPMENT

BOX 32098, HIGHWAY #1 EAST
 REGINA, SK
 CA S4N 7L2
 Contact: John Edger
 John.Edger@redheadequipment.ca
 T: (306)721-5555
 F: (306)721-2855



OIL CONDITION

Visc @ 40°C	cSt	█ 31.9	---	---	---
-------------	-----	--------	-----	-----	-----



CONTAMINATION

Silicon	ppm	█ 2	---	---	---
Sodium	ppm	█ 2	---	---	---
Potassium	ppm	█ 0	---	---	---



WEAR METALS

Iron	ppm	█ 8	---	---	---
Copper	ppm	█ 68	---	---	---
Lead	ppm	█ 3	---	---	---
Tin	ppm	█ 4	---	---	---
Aluminum	ppm	█ 6	---	---	---
Chromium	ppm	█ 0	---	---	---
Molybdenum	ppm	█ <1	---	---	---
Nickel	ppm	█ <1	---	---	---
Titanium	ppm	0	---	---	---
Silver	ppm	█ <1	---	---	---
Manganese	ppm	█ 0	---	---	---
Vanadium	ppm	0	---	---	---



ADDITIVES

Calcium	ppm	46	---	---	---
Magnesium	ppm	█ 12	---	---	---
Zinc	ppm	█ 22	---	---	---
Phosphorus	ppm	█ 198	---	---	---
Barium	ppm	█ <1	---	---	---
Boron	ppm	█ 83	---	---	---

Diagnosis

Confirm the source of the lubricant being utilized for top-up/fill. Resample at the next service interval to monitor. All component wear rates are normal. There is no indication of any contamination in the fluid. Additive levels indicate the addition of a different brand, or type of fluid. The condition of the fluid is acceptable for the time in service.

Depot: RED705REG
Unique No: 5671755
Signed: Wes Davis
Report Date: 07 Nov 2023



CONSTRUCTION EQUIPMENT



GRAPHS

