



# CONSTRUCTION EQUIPMENT

394340 VOLVO L60H 621601 - COOLANT



**Sample No:** VCP394340  
**Oil Type:** VOLVO COOLANT VCS (YELLOW)  
**Job No:** 394340



## SAMPLE INFORMATION

Sample Number	VCP394340	---	---	---
Sample Date	11 Dec 2023	---	---	---
Machine Hours	5863	---	---	---
Sample Status	ABNORMAL	---	---	---

### STRONGCO EQUIPMENT (CE)

1051 Heritage Rd.  
 Burlington, ON  
 CA L7L 4Y1

Contact: Sue Hooton  
 shooton@strongco.com  
 T: (905)331-3835  
 F: (905)643-6077



## COOLANT CONDITION

Boron	ppm	█ 19	---	---	---
Phosphorus	ppm	█ 5	---	---	---
Sodium	ppm	█ 6152	---	---	---
Potassium	ppm	█ 190	---	---	---
Silicon	ppm	█ 7	---	---	---
pH	Scale 0-14	█ 6.95	---	---	---
Reserve Alkalinity	Scale 0-20	█ 2.7	---	---	---
Molybdenum	ppm	█ 13	---	---	---
Nitrites	ppm	█ 960	---	---	---
Percentage Glycol	%	█ 49.9	---	---	---
Freezing Point	°C	█ -33	---	---	---

### Diagnosis

The coolant change at the time of sampling has been noted. We recommend an early resample to monitor this condition. Copper ppm levels are abnormal. The high metal levels indicate corrosion in the system. There is no indication of any contamination in the coolant. The reserve alkalinity of this fluid is acceptable.



## CONTAMINATION

Magnesium	ppm	█ 3	---	---	---
Calcium	ppm	█ 18	---	---	---
Coolant Appearance		█ Clear	---	---	---
Coolant Color		█ Yellow	---	---	---
Sand/Dirt	scalar	█ NONE	---	---	---
Debris	scalar	█ NONE	---	---	---
Precipitate	scalar	█ NONE	---	---	---
Silt	scalar	█ NONE	---	---	---



## CORROSION

Iron	ppm	█ 0	---	---	---
Aluminum	ppm	█ <1	---	---	---
Copper	ppm	▲ 14	---	---	---
Lead	ppm	█ 0	---	---	---
Tin	ppm	█ 0	---	---	---

**Depot:** VOLVO0252  
**Unique No:** 5696432  
**Signed:** Kevin Marson  
**Report Date:** 18 Dec 2023



# CONSTRUCTION EQUIPMENT

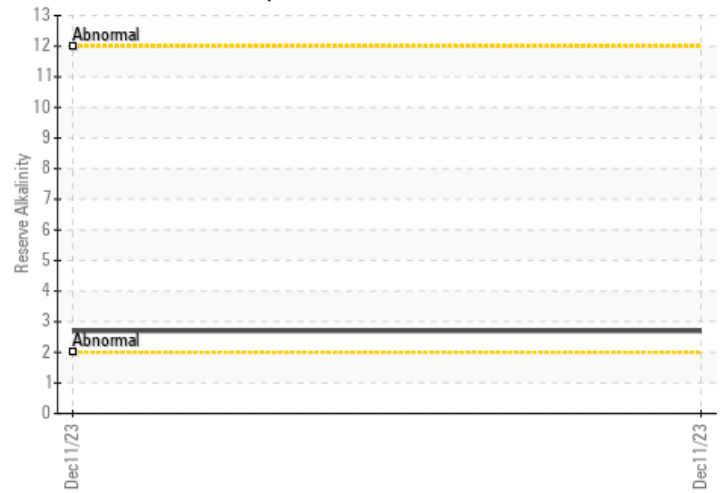


## VOLVO GRAPHS

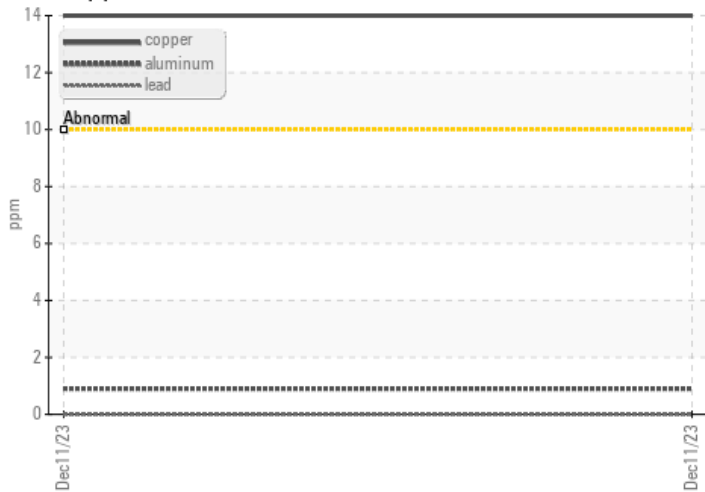
### Iron/Tin/Silver



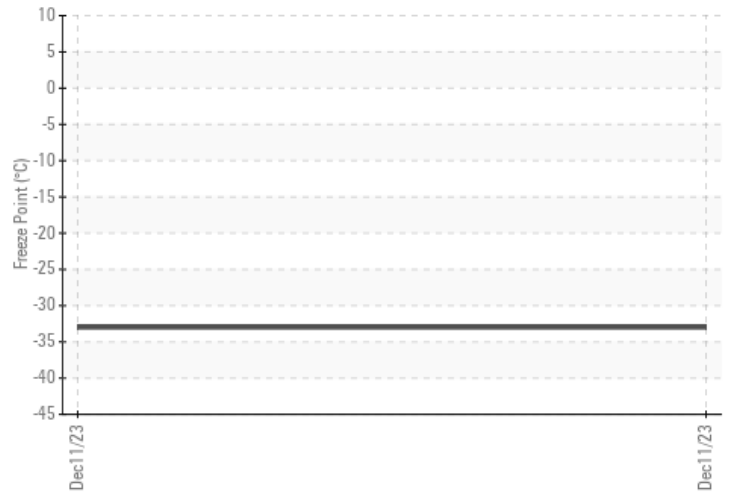
### Reserve Alkalinity



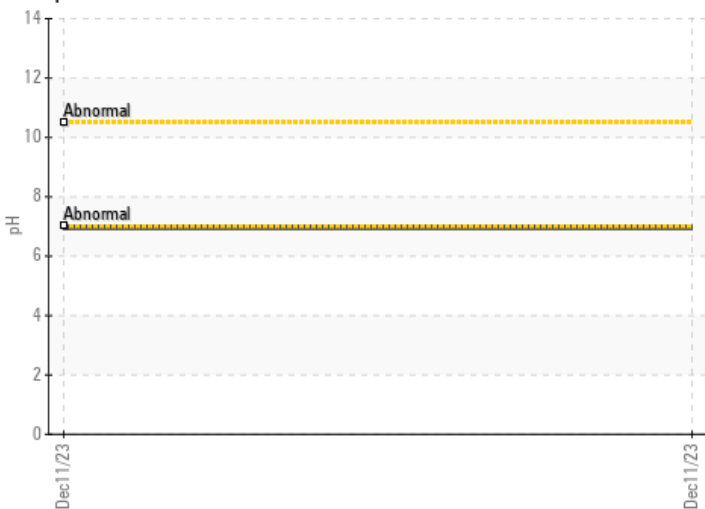
### Copper/Aluminum/Lead



### Freeze Point



### pH



### Nitrites

