



# CONSTRUCTION EQUIPMENT

## EQUIPMENT KEBP VOLVO L150H 4202 - COOLANT



**Sample No:** VCP391616

**Oil Type:** {unknown}

**Job No:**



### SAMPLE INFORMATION

Sample Number	<b>VCP391616</b>	VCP391618	---	---
Sample Date	<b>02 Feb 2024</b>	29 Jan 2024	---	---
Machine Hours	<b>30308</b>	30262	---	---
Sample Status	<b>NORMAL</b>	NORMAL	---	---



### STRONGCO INC

1575 RUE BERSIMIS  
CHICOUTIMI, QC  
CA G7K 1G9

Contact: Dany Levesque  
dlevesque@strongco.com  
T: (418)690-1724  
F: (418)690-5002



### COOLANT CONDITION

Boron	ppm	<b>12</b>	4	---	---
Phosphorus	ppm	<b>12</b>	4	---	---
Sodium	ppm	<b>667</b>	611	---	---
Potassium	ppm	<b>7963</b>	7389	---	---
Silicon	ppm	<b>4</b>	6	---	---
pH	Scale 0-14	<b>8.62</b>	8.34	---	---
Reserve Alkalinity	Scale 0-20	<b>1.9</b>	1.8	---	---
Molybdenum	ppm	<b>328</b>	298	---	---
Nitrites	ppm	<b>640</b>	560	---	---
Percentage Glycol	%	<b>43.9</b>	41.2	---	---
Freezing Point	°C	<b>-28</b>	-26	---	---

### Diagnosis

Échantillonner de nouveau l'équipement au prochain intervalle de vidange afin d'en surveiller la condition. Les taux d'usure de tous les composants sont normaux. Il n'y a aucun indice de contamination dans l'agent de refroidissement. L'état de l'agent de refroidissement est acceptable pour la durée de service.



### CONTAMINATION

Magnesium	ppm	<b>1</b>	1	---	---
Calcium	ppm	<b>16</b>	12	---	---
Coolant Appearance		<b>Clear</b>	Clear	---	---
Coolant Color		<b>Red</b>	Red	---	---
Sand/Dirt	scalar	<b>NONE</b>	NONE	---	---
Debris	scalar	<b>NONE</b>	VLITE	---	---
Precipitate	scalar	<b>NONE</b>	NONE	---	---
Silt	scalar	<b>NONE</b>	NONE	---	---



### CORROSION

Iron	ppm	<b>&lt;1</b>	0	---	---
Aluminum	ppm	<b>2</b>	3	---	---
Copper	ppm	<b>&lt;1</b>	0	---	---
Lead	ppm	<b>0</b>	0	---	---
Tin	ppm	<b>0</b>	0	---	---

**Depot:** VOLVO0230  
**Unique No:** 5723915  
**Signed:** Wes Davis  
**Report Date:** 13 Feb 2024

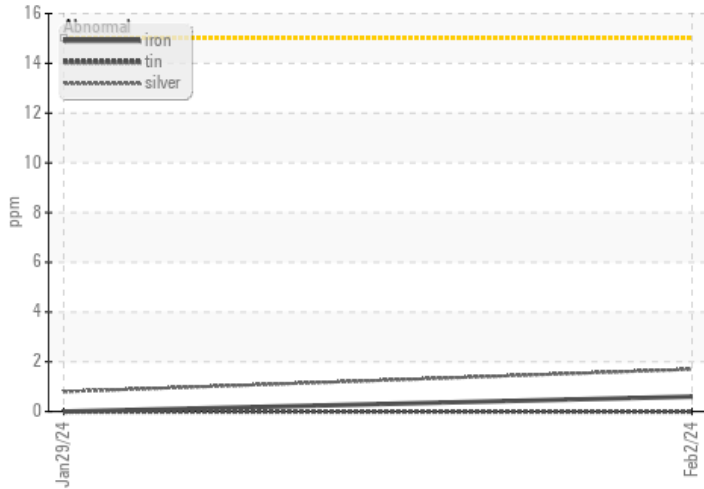


# CONSTRUCTION EQUIPMENT

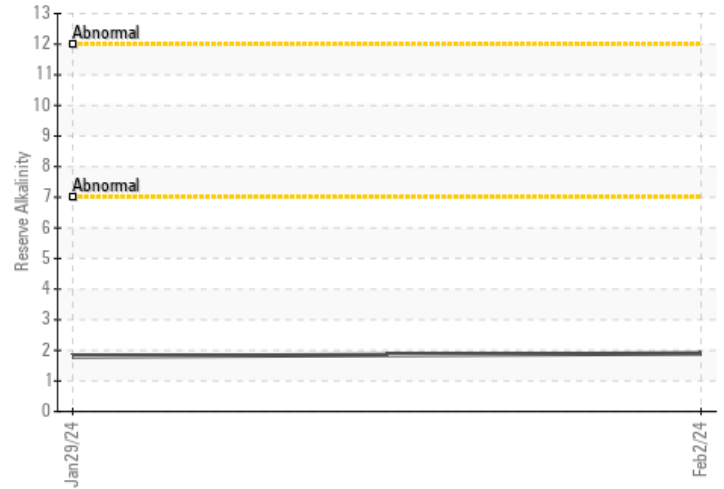


## GRAPHS

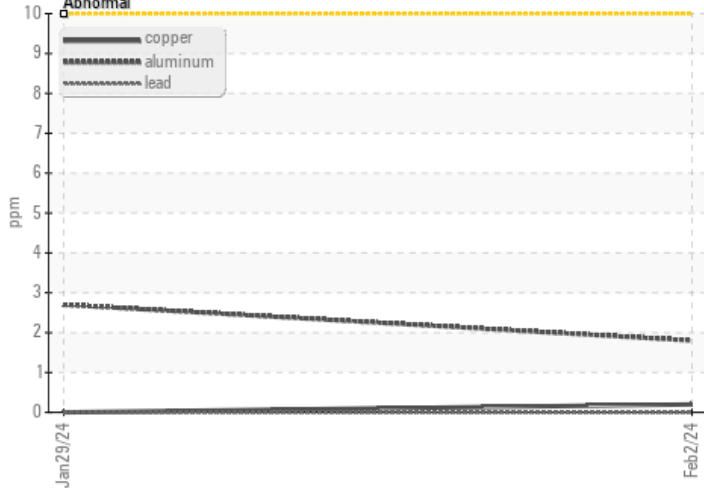
### Iron/Tin/Silver



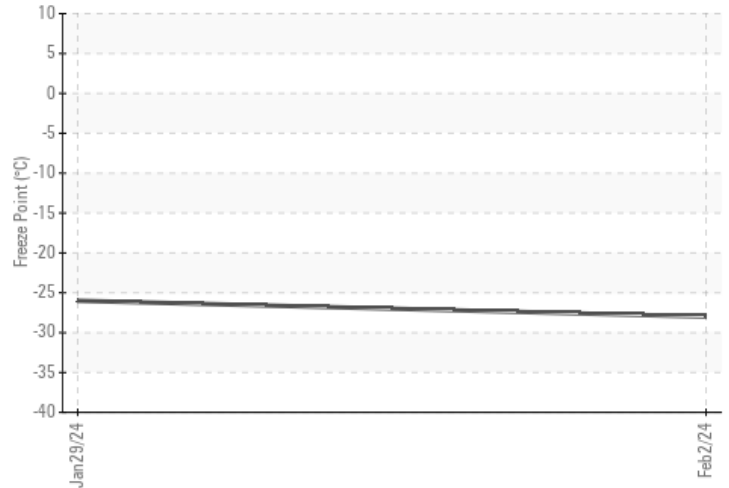
### Reserve Alkalinity



### Copper/Aluminum/Lead



### Freeze Point



### pH



### Nitrites

