



CONSTRUCTION EQUIPMENT

A09192 VOLVO A30G 740078 - HYDRAULIC SYSTEM



Sample No: VCP386043
Oil Type: MOBIL HYDRAULIC OIL AW 46
Job No: A09192



SAMPLE INFORMATION

Sample Number	VCP386043	VCP288072	VCP235638	VCP188492
Sample Date	10 Nov 2022	04 Nov 2020	23 Jan 2019	04 Aug 2017
Machine Hours	4945	3630	2650	1950
Oil Hours	1000	3630	2650	1950
Oil Changed	Not Chngd	Changed	Not Chngd	N/A
Sample Status	ABNORMAL	ATTENTION	NORMAL	NORMAL

K C CONSTRUCTION

1737 STOUT DRIVE
 IVYLAND, PA
 US 18974
 Contact: DUKE D.
 duked@kcconstruct.com
 T: (267)784-7337
 F: x:



OIL CONDITION

Visc @ 40°C	cSt	44.4	49.6	45.57	46.39
Acid Number (AN)	mg KOH/g	0.34	0.355	0.326	0.416



CONTAMINATION

Particles 5-15µm	count	---	---	---	56119
Particles 15-25µm	count	---	---	---	1706
Particles 25-50µm	count	---	---	---	338
Particles 50-100µm	count	---	---	---	82
Particles >100µm	count	---	---	---	518
NAS Code		---	---	---	12
Particles >4µm		24084	32529	4316	3480
Particles >6µm		7837	3653	308	630
Particles >14µm		531	161	10	43
ISO 4406:1999 (c)		22/20/16	22/19/15	19/15/10	19/16/13
Silicon	ppm	10	9	8	8
Sodium	ppm	2	3	2	2
Potassium	ppm	0	<1	8	0

Diagnosis

We recommend you service the filters on this component. We recommend an early resample to monitor this condition. All component wear rates are normal. Oil Cleanliness are abnormally high. Particles >14µm are abnormally high. Particles >6µm are notably high. The AN level is acceptable for this fluid. The oil is still serviceable provided that the contaminant(s) can be reduced to acceptable levels.



WEAR METALS

Iron	ppm	11	9	7	6
Copper	ppm	7	6	5	10
Lead	ppm	5	4	4	11
Tin	ppm	<1	<1	0	2
Aluminum	ppm	4	3	2	2
Chromium	ppm	<1	<1	<1	<1
Molybdenum	ppm	<1	<1	0	0
Nickel	ppm	0	0	<1	0
Titanium	ppm	0	<1	<1	0
Silver	ppm	0	<1	0	0
Manganese	ppm	<1	<1	<1	<1
Vanadium	ppm	0	0	0	0



ADDITIVES

Calcium	ppm	479	450	413	66
Magnesium	ppm	2	3	2	0
Zinc	ppm	559	537	518	452
Phosphorus	ppm	436	397	412	351
Barium	ppm	0	0	<1	0
Boron	ppm	0	2	<1	1

Depot: KCCIVY
Unique No: 10222027
Signed: Wes Davis
Report Date: 21 Nov 2022

Contact/Location: DUKE D. - KCCIVY

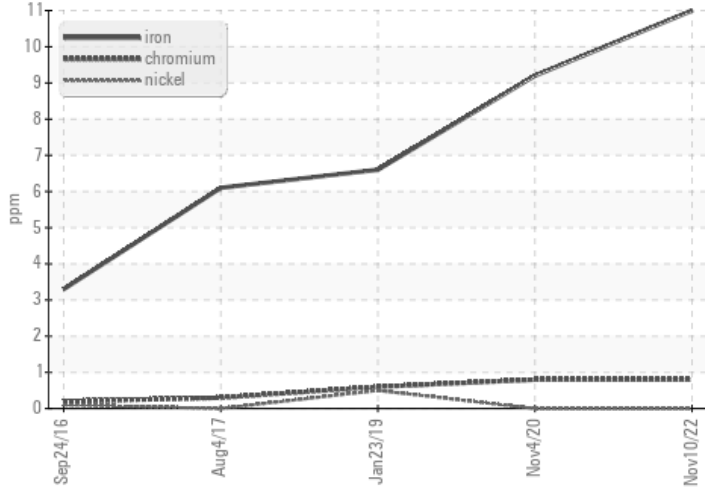


CONSTRUCTION EQUIPMENT

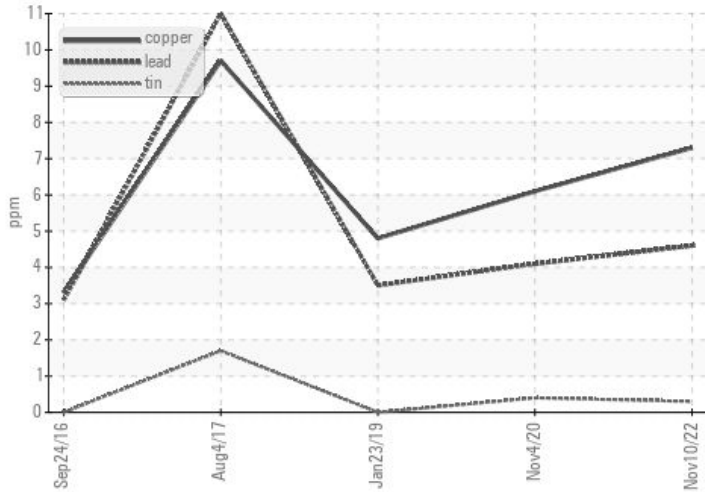


GRAPHS

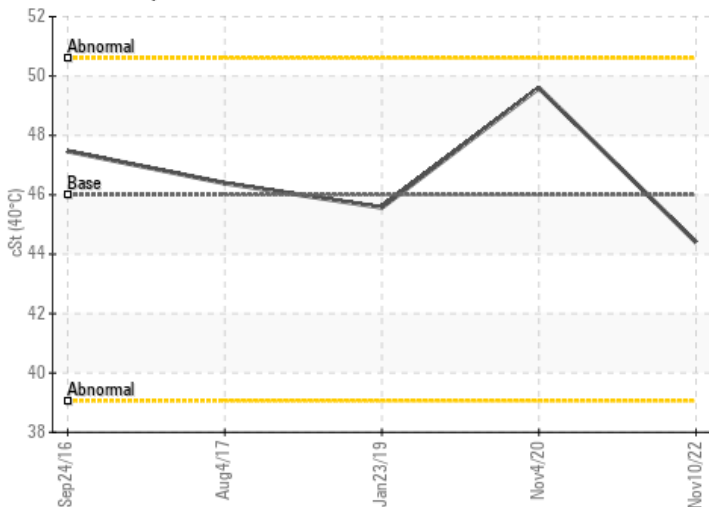
Ferrous Alloys



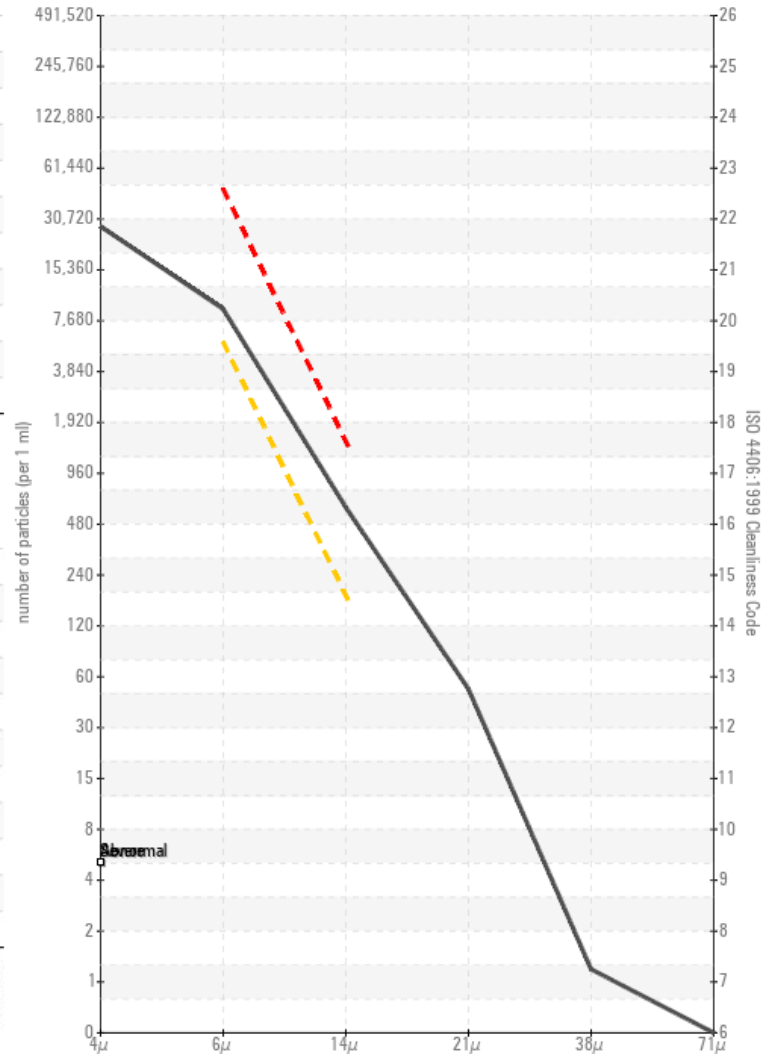
Non-ferrous Metals



Viscosity @ 40°C



Particle Count



Acid Number

