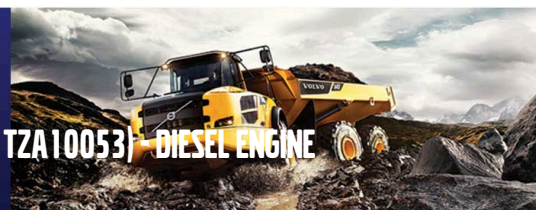




CONSTRUCTION EQUIPMENT

SPM621247 SEG 50 CATERPILLAR 336F 20-514 (S/N TZA 10053) - DIESEL ENGINE



Sample No: VCP407044
Oil Type: VOLVO ULTRA DIESEL ENGINE OIL 15W40 VDS-3
Job No: SPM621247 SEG 50



SAMPLE INFORMATION

Sample Number	VCP407044	---	---	---
Sample Date	27 Oct 2023	---	---	---
Machine Hours	6549	---	---	---
Oil Hours	0	---	---	---
Oil Changed	Changed	---	---	---
Sample Status	ATTENTION	---	---	---

ADAMO DEMOLITION COMPANY
 320 EAST 7 MILE RD
 DETROIT, MI
 US 48203
 Contact: SERVICE MANAGER

OIL CONDITION

Visc @ 100°C	cSt	▲ 12.4	---	---	---
Base Number (BN)	mg KOH/g	■ 9.3	---	---	---
Oxidation (PA)	%	■ 57	---	---	---

T:
F:

Diagnosis

Oil and filter change at the time of sampling has been noted. No corrective action is recommended at this time. Resample at the next service interval to monitor. All component wear rates are normal. Tests indicate that there is no fuel present in the oil. There is no indication of any contamination in the oil. The oil viscosity is lower than normal. The BN result indicates that there is suitable alkalinity remaining in the oil. Confirm oil type.

CONTAMINATION

Soot %	%	■ 0.1	---	---	---
Nitration (PA)	%	■ 54	---	---	---
Sulfation (PA)	%	■ 51	---	---	---
Glycol	%	■ NEG	---	---	---
Fuel	%	■ 0.3	---	---	---
Silicon	ppm	■ 3	---	---	---
Sodium	ppm	■ 0	---	---	---
Potassium	ppm	■ 1	---	---	---

WEAR METALS

Iron	ppm	■ 3	---	---	---
Copper	ppm	■ <1	---	---	---
Lead	ppm	■ <1	---	---	---
Tin	ppm	■ <1	---	---	---
Aluminum	ppm	■ 2	---	---	---
Chromium	ppm	■ <1	---	---	---
Molybdenum	ppm	■ 61	---	---	---
Nickel	ppm	■ <1	---	---	---
Titanium	ppm	■ <1	---	---	---
Silver	ppm	■ 0	---	---	---
Manganese	ppm	■ <1	---	---	---
Vanadium	ppm	■ 0	---	---	---

ADDITIVES

Calcium	ppm	■ 1068	---	---	---
Magnesium	ppm	■ 906	---	---	---
Zinc	ppm	■ 1208	---	---	---
Phosphorus	ppm	■ 1102	---	---	---
Barium	ppm	■ 5	---	---	---
Boron	ppm	■ 5	---	---	---

Depot: ADADET
Unique No: 10728571
Signed: Sean Felton
Report Date: 08 Nov 2023



CONSTRUCTION EQUIPMENT



GRAPHS

