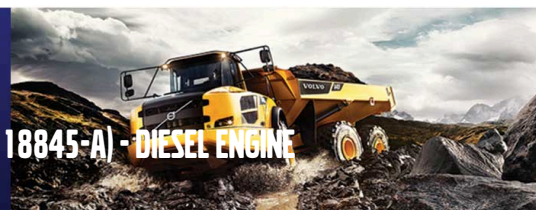




CONSTRUCTION EQUIPMENT

SPM621247 SEG 80 SULLIVAN 210 CFM 12-201 (S/N 18845-A) - DIESEL ENGINE



Sample No: VCP419780
Oil Type: VOLVO ULTRA DIESEL ENGINE OIL 15W40 VDS-3
Job No: SPM621247 SEG 80



SAMPLE INFORMATION

Sample Number	VCP419780	---	---	---
Sample Date	26 Oct 2023	---	---	---
Machine Hours	3256	---	---	---
Oil Hours	0	---	---	---
Oil Changed	Changed	---	---	---
Sample Status	SEVERE	---	---	---

ADAMO DEMOLITION COMPANY
 320 EAST 7 MILE RD
 DETROIT, MI
 US 48203
 Contact: SERVICE MANAGER



OIL CONDITION

Visc @ 100°C	cSt	8.5	---	---	---
Base Number (BN)	mg KOH/g	6.1	---	---	---
Oxidation (PA)	%	53	---	---	---

T:
F:

Diagnosis

We advise that you check the fuel injection system. The oil change at the time of sampling has been noted. We recommend an early resample to monitor this condition. All component wear rates are normal. There is a high amount of fuel present in the oil. Tests confirm the presence of fuel in the oil. The BN result indicates that there is suitable alkalinity remaining in the oil. Fuel is present in the oil and is lowering the viscosity. The oil is no longer serviceable due to the presence of contaminants.



CONTAMINATION

Soot %	%	0.1	---	---	---
Nitration (PA)	%	73	---	---	---
Sulfation (PA)	%	49	---	---	---
Glycol	%	NEG	---	---	---
Fuel	%	13.1	---	---	---
Silicon	ppm	5	---	---	---
Sodium	ppm	0	---	---	---
Potassium	ppm	2	---	---	---



WEAR METALS

Iron	ppm	9	---	---	---
Copper	ppm	18	---	---	---
Lead	ppm	2	---	---	---
Tin	ppm	1	---	---	---
Aluminum	ppm	2	---	---	---
Chromium	ppm	<1	---	---	---
Molybdenum	ppm	50	---	---	---
Nickel	ppm	<1	---	---	---
Titanium	ppm	22	---	---	---
Silver	ppm	0	---	---	---
Manganese	ppm	<1	---	---	---
Vanadium	ppm	<1	---	---	---



ADDITIVES

Calcium	ppm	1038	---	---	---
Magnesium	ppm	481	---	---	---
Zinc	ppm	841	---	---	---
Phosphorus	ppm	785	---	---	---
Barium	ppm	5	---	---	---
Boron	ppm	114	---	---	---

Depot: ADADET
Unique No: 10728572
Signed: Wes Davis
Report Date: 08 Nov 2023



CONSTRUCTION EQUIPMENT



GRAPHS

