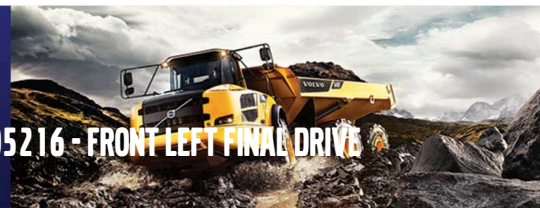




CONSTRUCTION EQUIPMENT

SWA412025 RENTAL HITACHI ZW370-6 ZW3706-005216 - FRONT LEFT FINAL DRIVE



Sample No: VCP410284
Oil Type: SAE 50W
Job No: SWA412025 RENTAL



SAMPLE INFORMATION

Sample Number	VCP410284	---	---	---
Sample Date	10 Jan 2024	---	---	---
Machine Hours	4098	---	---	---
Oil Hours	0	---	---	---
Oil Changed	Changed	---	---	---
Sample Status	NORMAL	---	---	---

ALTA EQUIPMENT CO - ORLAND PARK
5000 INDUSTRIAL HWY
GARY, IN
US 46406
Contact: DAVE ENG
DAVE.ENG@ALTG.COM
T: (312)350-2560
F:



OIL CONDITION

Visc @ 40°C	cSt	█ 169	---	---	---
-------------	-----	-------	-----	-----	-----



CONTAMINATION

Water	%	NEG	---	---	---
Silicon	ppm	█ 17	---	---	---
Sodium	ppm	█ 0	---	---	---
Potassium	ppm	█ 4	---	---	---

Diagnosis

Resample at the next service interval to monitor. All component wear rates are normal. There is no indication of any contamination in the oil. The condition of the oil is acceptable for the time in service.



WEAR METALS

Iron	ppm	█ 54	---	---	---
Copper	ppm	█ 41	---	---	---
Lead	ppm	█ 2	---	---	---
Tin	ppm	█ 1	---	---	---
Aluminum	ppm	█ 2	---	---	---
Chromium	ppm	█ <1	---	---	---
Molybdenum	ppm	█ <1	---	---	---
Nickel	ppm	█ 0	---	---	---
Titanium	ppm	█ <1	---	---	---
Silver	ppm	█ 0	---	---	---
Manganese	ppm	█ <1	---	---	---
Vanadium	ppm	█ 0	---	---	---



ADDITIVES

Calcium	ppm	█ 3223	---	---	---
Magnesium	ppm	█ 6	---	---	---
Zinc	ppm	█ 1880	---	---	---
Phosphorus	ppm	█ 1118	---	---	---
Barium	ppm	█ 14	---	---	---
Boron	ppm	█ 101	---	---	---

Depot: VOLVO8885
Unique No: 10859303
Signed: Don Baldrige
Report Date: 03 Feb 2024



CONSTRUCTION EQUIPMENT



GRAPHS

