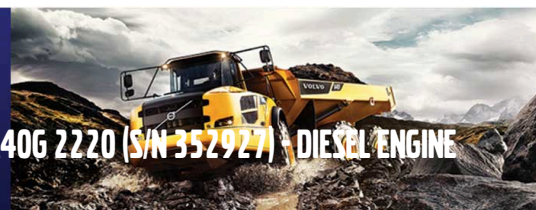




# CONSTRUCTION EQUIPMENT

ASCENDUM MACHINERY/500 HOUR CSA 41944 VOLVO A40G 2220 (S/N 352927) - DIESEL ENGINE



**Sample No:** VCP454988  
**Oil Type:** VOLVO ULTRA DIESEL ENGINE OIL 15W40 VDS-3  
**Job No:** 41944



## SAMPLE INFORMATION

Sample Number	<b>VCP454988</b>	VCP410003	VCP0004959	---
Sample Date	<b>22 Apr 2024</b>	12 Apr 2023	13 Nov 2022	---
Machine Hours	<b>1441</b>	953	543	---
Oil Hours	<b>0</b>	410	0	---
Oil Changed	<b>Changed</b>	Changed	N/A	---
Sample Status	<b>ABNORMAL</b>	NORMAL	NORMAL	---

**TRIANGLE GRADING AND PAVING INC**  
1521 Huffman Mill Rd  
BURLINGTON, NC  
US 27216  
Contact: KAREN HILLIARD  
khilliard@trianglegradingpaving.com  
T: (336)584-1745  
F: (336)584-0145



## OIL CONDITION

Visc @ 100°C	cSt	<b>12.9</b>	12.7	10.8	---
Base Number (BN)	mg KOH/g	<b>7.8</b>	7.4	6.8	---
Oxidation (PA)	%	<b>56</b>	56	65	---

## Diagnosis

Oil and filter change at the time of sampling has been noted. Resample at the next service interval to monitor. Valve wear is indicated. There is no indication of any contamination in the oil. The BN result indicates that there is suitable alkalinity remaining in the oil. The condition of the oil is acceptable for the time in service.



## CONTAMINATION

Water	%	<b>NEG</b>	NEG	NEG	---
Soot %	%	<b>0.2</b>	0.1	0.2	---
Nitration (PA)	%	<b>62</b>	57	86	---
Sulfation (PA)	%	<b>51</b>	47	58	---
Glycol	%	<b>NEG</b>	NEG	NEG	---
Fuel	%	<b>&lt;1.0</b>	<1.0	0.9	---
Silicon	ppm	<b>7</b>	8	28	---
Sodium	ppm	<b>&lt;1</b>	2	3	---
Potassium	ppm	<b>0</b>	1	2	---



## WEAR METALS

Iron	ppm	<b>18</b>	11	20	---
Copper	ppm	<b>8</b>	30	162	---
Lead	ppm	<b>&lt;1</b>	<1	3	---
Tin	ppm	<b>2</b>	2	4	---
Aluminum	ppm	<b>2</b>	0	3	---
Chromium	ppm	<b>&lt;1</b>	<1	<1	---
Molybdenum	ppm	<b>61</b>	61	81	---
Nickel	ppm	<b>6</b>	4	4	---
Titanium	ppm	<b>0</b>	0	0	---
Silver	ppm	<b>0</b>	0	<1	---
Manganese	ppm	<b>1</b>	<1	3	---
Vanadium	ppm	<b>0</b>	0	0	---



## ADDITIVES

Calcium	ppm	<b>1153</b>	1224	2102	---
Magnesium	ppm	<b>892</b>	770	86	---
Zinc	ppm	<b>1216</b>	1178	1154	---
Phosphorus	ppm	<b>1052</b>	993	917	---
Barium	ppm	<b>0</b>	2	0	---
Boron	ppm	<b>10</b>	10	48	---

**Depot:** TRIBUR  
**Unique No:** 10992775  
**Signed:** Jonathan Hester  
**Report Date:** 25 Apr 2024



# CONSTRUCTION EQUIPMENT



## GRAPHS

