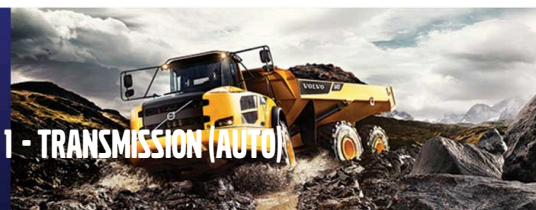




# CONSTRUCTION EQUIPMENT

TMR-OKEECHOBEE 716012 434166 VOLVO L180H 4821 - TRANSMISSION (AUTO)



**Sample No:** VCP449958  
**Oil Type:** VOLVO AT 102  
**Job No:** 716012



## SAMPLE INFORMATION

Sample Number	<b>VCP449958</b>	VCP445660	VCP443271	VCP412617
Sample Date	<b>18 May 2024</b>	12 Feb 2024	23 Jan 2024	21 Jul 2023
Machine Hours	<b>16357</b>	15531	15313	13817
Oil Hours	<b>0</b>	0	0	0
Oil Changed	<b>Not Chngd</b>	Not Chngd	Not Chngd	Not Chngd
Sample Status	<b>NORMAL</b>	NORMAL	NORMAL	NORMAL

**TRADEMARK METALS RECYCLING - OKEECHOBEE**  
9800 NE 128TH AVE  
OKEECHOBEE, FL  
US 34972  
Contact: RYAN BOWDEN



## OIL CONDITION

Visc @ 40°C	cSt	<b>27.8</b>	29.4	28.1	26.8
-------------	-----	-------------	------	------	------

T: (863)467-9810  
F: (863)467-9814



## CONTAMINATION

Water	%	NEG	NEG	NEG	NEG
Silicon	ppm	<b>4</b>	4	11	4
Sodium	ppm	<b>2</b>	0	0	4
Potassium	ppm	<b>1</b>	1	1	1

## Diagnosis

Resample at the next service interval to monitor. All component wear rates are normal. There is no indication of any contamination in the fluid. The condition of the fluid is acceptable for the time in service.



## WEAR METALS

Iron	ppm	<b>86</b>	65	61	51
Copper	ppm	<b>4</b>	3	2	2
Lead	ppm	<b>0</b>	<1	0	0
Tin	ppm	<b>0</b>	<1	0	0
Aluminum	ppm	<b>&lt;1</b>	1	2	0
Chromium	ppm	<b>&lt;1</b>	<1	<1	0
Molybdenum	ppm	<b>&lt;1</b>	<1	<1	0
Nickel	ppm	<b>0</b>	<1	0	0
Titanium	ppm	<b>&lt;1</b>	<1	0	0
Silver	ppm	<b>&lt;1</b>	<1	0	0
Manganese	ppm	<b>&lt;1</b>	<1	<1	<1
Vanadium	ppm	<b>&lt;1</b>	<1	0	0



## ADDITIVES

Calcium	ppm	<b>69</b>	88	64	69
Magnesium	ppm	<b>2</b>	1	2	<1
Zinc	ppm	<b>5</b>	7	<1	0
Phosphorus	ppm	<b>185</b>	169	172	210
Barium	ppm	<b>0</b>	0	<1	0
Boron	ppm	<b>79</b>	87	90	97

**Depot:** TRAOKE  
**Unique No:** 11049394  
**Signed:** Don Baldrige  
**Report Date:** 30 May 2024



# CONSTRUCTION EQUIPMENT



## GRAPHS

