

# OIL ANALYSIS REPORT

**VOLVO  
PENTA**

**R1-22601 MTU 95090601269 - DIESEL FUEL**

**Sample No:** VPA041291

**Oil Type:** No.2 DIESEL FUEL (ULTRALOW SULPHUR)

## SAMPLE INFORMATION

Sample Number	VPA041291	---	---	---
Sample Date	09 Nov 2023	---	---	---
Machine Hours	55	---	---	---
Sample Status	NORMAL	---	---	---

## FUEL CONDITION

Sulfur	ppm	■ 10	---	---	---
Visc @ 40°C	cSt	■ 3.1	---	---	---

## CONTAMINATION

Lead	ppm	■ 0	---	---	---
Nickel	ppm	■ 0	---	---	---
Aluminum	ppm	■ 0	---	---	---
Vanadium	ppm	0	---	---	---
Silicon	ppm	■ <1	---	---	---

**CULLEN DIESEL POWER - 695335**

9300 192 ST

SURREY, BC

CA V4N 3R8

Contact: MATT GLUBIS

mjg@cullendiesel.com

T:

F:

## Diagnosis

Please contact your representative for information regarding the proper sampling kits for your service.(not applicable) There is no indication of any contamination in the component(unconfirmed). Not enough sample submitted to determine fuel condition and/or classification.

**Depot:** CULSUR

**Unique No:** 5684241

**Signed:** Kevin Marson

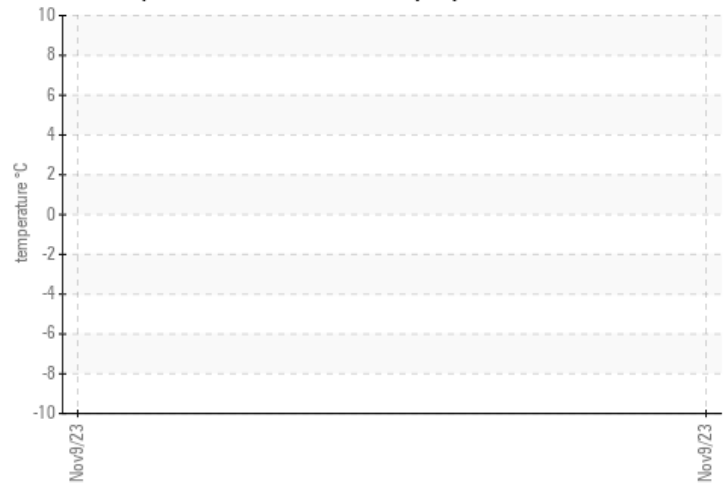
**Report Date:** 29 Nov 2023

# OIL ANALYSIS REPORT

**VOLVO  
PENTA**

## GRAPHS

Pensky-Martens Flash Point (°C)



GCD Spectrum

