

OIL ANALYSIS REPORT

**VOLVO
PENTA**

SWAN VALLEY LODGE 180016795 356432 - DIESEL FUEL

Sample No: VPA060265

Oil Type: No.2 DIESEL FUEL (LOW-SULPHUR)

SAMPLE INFORMATION

Sample Number	VPA060265	---	---	---
Sample Date	02 Dec 2023	---	---	---
Machine Hours	681	---	---	---
Sample Status	ABNORMAL	---	---	---

FUEL CONDITION

Initial Boiling Point	°C	164	---	---	---
10% Distill Point	°C	192	---	---	---
20% Distill Point	°C	205	---	---	---
30% Distill Point	°C	219	---	---	---
40% Distill Point	°C	232	---	---	---
50% Distill Point	°C	246	---	---	---
60% Distill Point	°C	260	---	---	---
70% Distill Point	°C	275	---	---	---
80% Distill Point	°C	292	---	---	---
90% Distill Point	°C	314	---	---	---
Final Boiling Point	°C	361	---	---	---
Cetane Index		45	---	---	---
API Gravity		37	---	---	---
Sulfur	ppm	33	---	---	---
Visc @ 40°C	cSt	2.2	---	---	---
Fuel Color	text	Orang	---	---	---

CONTAMINATION

Water	%	0.003	---	---	---
Lead	ppm	0	---	---	---
Nickel	ppm	0	---	---	---
Aluminum	ppm	0	---	---	---
Vanadium	ppm	0	---	---	---
Silicon	ppm	0	---	---	---

CULLEN DIESEL POWER - 695335

9300 192 ST

SURREY, BC

CA V4N 3R8

Contact: Michelle Sayers

mns@cullendiesel.com

T: (604)888-1211

F:

Diagnosis

We advise that you filter this fluid before use. We recommend you service the filters on this component. We recommend an early resample to monitor this condition. {not applicable} There is a moderate amount of silt (particulates < 14 microns in size) present in the fuel. The water content is negligible. Boron level higher than typical indicating possible addition of supplemental additive. The fuel is still serviceable provided that the contaminant(s) can be reduced to acceptable levels.

Depot: CULSUR

Unique No: 5708418

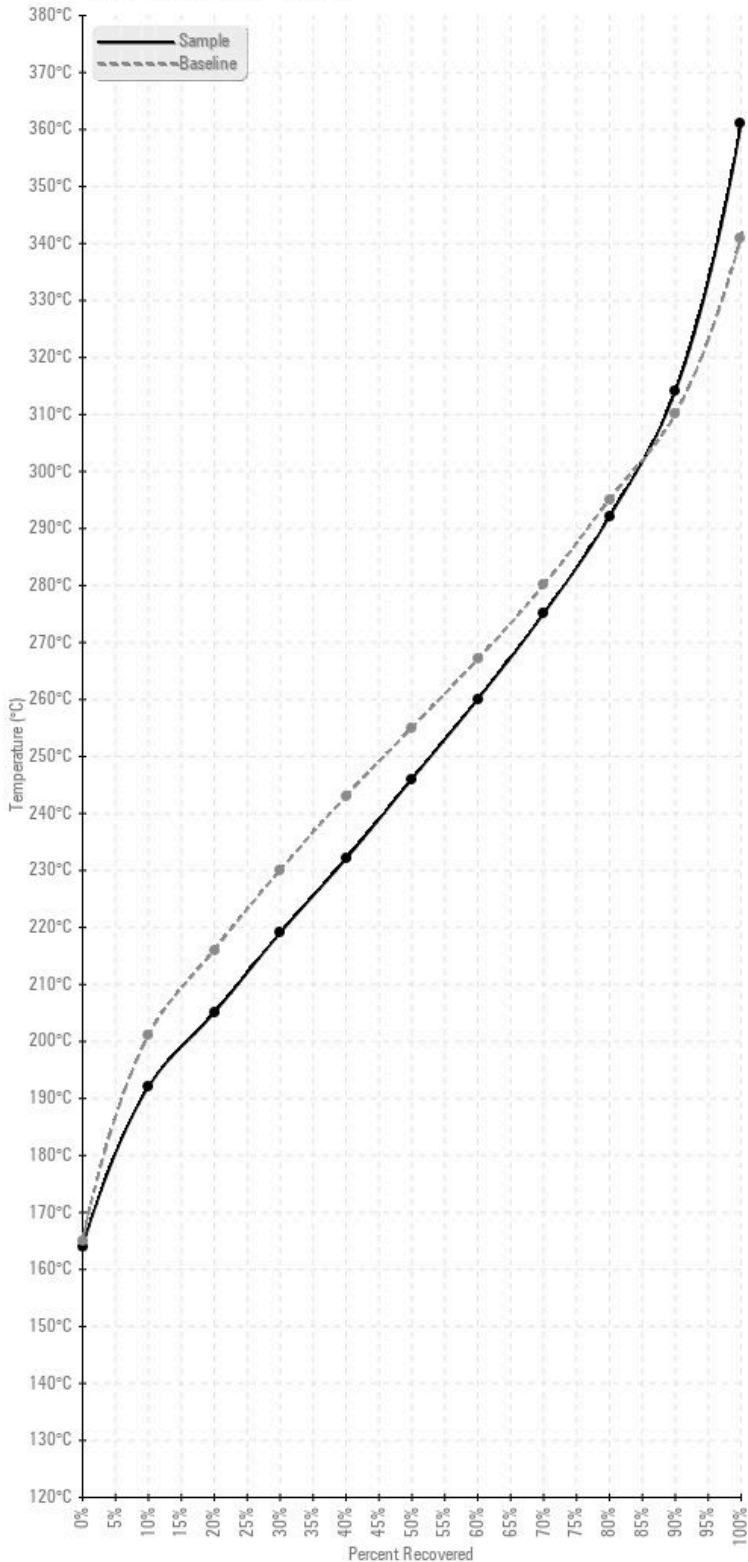
Signed: Kevin Marson

Report Date: 16 Jan 2024

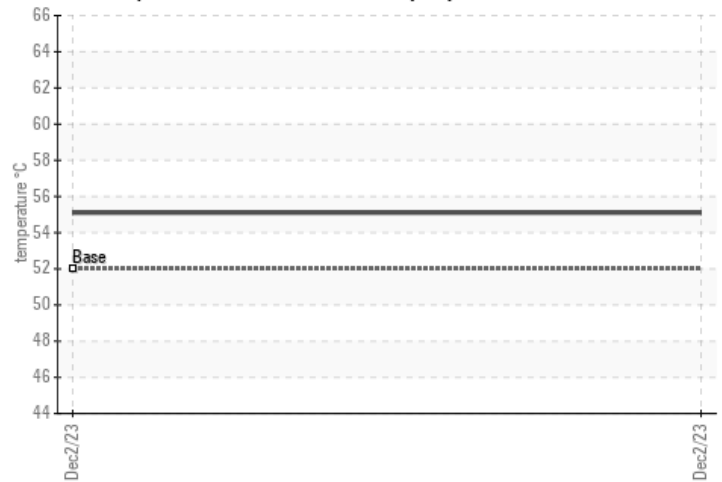
OIL ANALYSIS REPORT

GRAPHS

Fuel Distillation Curve



Pensky-Martens Flash Point (°C)



GCD Spectrum

