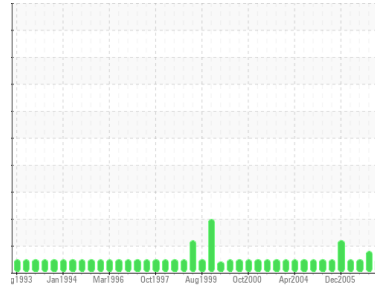




# OIL ANALYSIS REPORT

Sample Rating Trend



**NORMAL**



Area  
**Hydraulics**  
 Machine Id  
**PRESS #2**

Component  
**Hydraulic System**  
 Fluid

**SUNOCO SUNVIS 846 ISO 46 (550 GAL)**

## DIAGNOSIS

### Recommendation

Resample at the next service interval to monitor.

### Wear

All component wear rates are normal.

### Contamination

The system cleanliness is acceptable for your target ISO 4406 cleanliness code. The system and fluid cleanliness is acceptable.

### Fluid Condition

The condition of oil is suitable for further service.

SAMPLE INFORMATION		method	limit/base	current	history1	history2
Sample Number	Client Info			<b>WC22056056</b>	WC22053398	WC22051631
Sample Date	Client Info			<b>31 Jan 2007</b>	24 Oct 2006	25 Jul 2006
Machine Age	hrs	Client Info		<b>0</b>	0	0
Oil Age	hrs	Client Info		<b>0</b>	0	0
Oil Changed	Client Info			<b>N/A</b>	N/A	N/A
Sample Status				<b>NORMAL</b>	ABNORMAL	NORMAL

CONTAMINATION		method	limit/base	current	history1	history2
Water	WC Method			<b>NEG</b>	NEG	NEG

WEAR METALS		method	limit/base	current	history1	history2
Iron	ppm	ASTM D5185(m)		<b>6</b>	7	6
Chromium	ppm	ASTM D5185(m)		<b>&lt;1</b>	<1	<1
Nickel	ppm	ASTM D5185(m)		<b>0</b>	0	<1
Titanium	ppm	ASTM D5185(m)		<b>0</b>	0	0
Silver	ppm	ASTM D5185(m)		<b>0</b>	0	0
Aluminum	ppm	ASTM D5185(m)		<b>0</b>	1	<1
Lead	ppm	ASTM D5185(m)		<b>1</b>	3	<1
Copper	ppm	ASTM D5185(m)		<b>20</b>	20	19
Tin	ppm	ASTM D5185(m)		<b>&lt;1</b>	2	1
Vanadium	ppm	ASTM D5185(m)		<b>0</b>	0	<1

ADDITIVES		method	limit/base	current	history1	history2
Boron	ppm	ASTM D5185(m)		<b>&lt;1</b>	<1	1
Barium	ppm	ASTM D5185(m)		<b>2</b>	2	2
Molybdenum	ppm	ASTM D5185(m)		<b>&lt;1</b>	<1	<1
Manganese	ppm	ASTM D5185(m)		<b>&lt;1</b>	<1	<1
Magnesium	ppm	ASTM D5185(m)		<b>74</b>	80	79
Calcium	ppm	ASTM D5185(m)		<b>85</b>	91	88
Phosphorus	ppm	ASTM D5185(m)		<b>598</b>	601	566
Zinc	ppm	ASTM D5185(m)		<b>636</b>	679	620
Sulfur	ppm	ASTM D5185(m)		<b>2252</b>	2382	1928

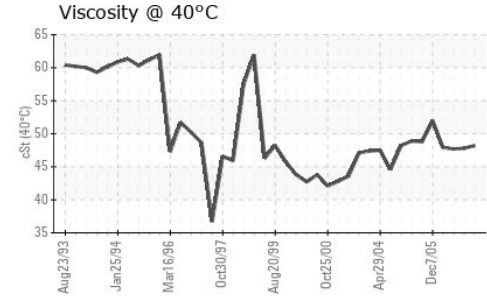
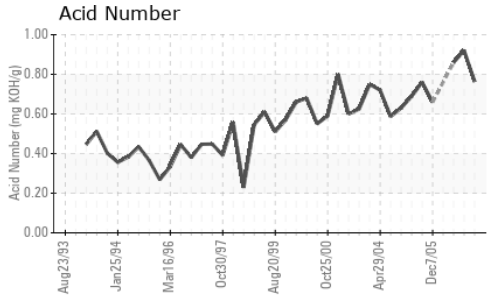
CONTAMINANTS		method	limit/base	current	history1	history2
Silicon	ppm	ASTM D5185(m)		<b>5</b>	6	6
Sodium	ppm	ASTM D5185(m)		<b>5</b>	2	4
Potassium	ppm	ASTM D5185(m)		<b>&lt;1</b>	1	1

FLUID CLEANLINESS		method	limit/base	current	history1	history2
Particles >4µm		ASTM D7647		<b>2140</b>	3697	959
Particles >6µm		ASTM D7647		<b>432</b>	▲ 1618	355
Particles >14µm		ASTM D7647		<b>38</b>	▲ 296	32
Particles >21µm		ASTM D7647		<b>12</b>	75	9
Particles >38µm		ASTM D7647		<b>2</b>	7	4
Particles >71µm		ASTM D7647		<b>0</b>	0	0
Oil Cleanliness		ISO 4406 (c)		<b>18/16/12</b>	▲ 19/18/15	17/16/12

FLUID DEGRADATION		method	limit/base	current	history1	history2
Acid Number (AN)	mg KOH/g	ASTM D974*		<b>0.764</b>	0.92	0.86



# OIL ANALYSIS REPORT

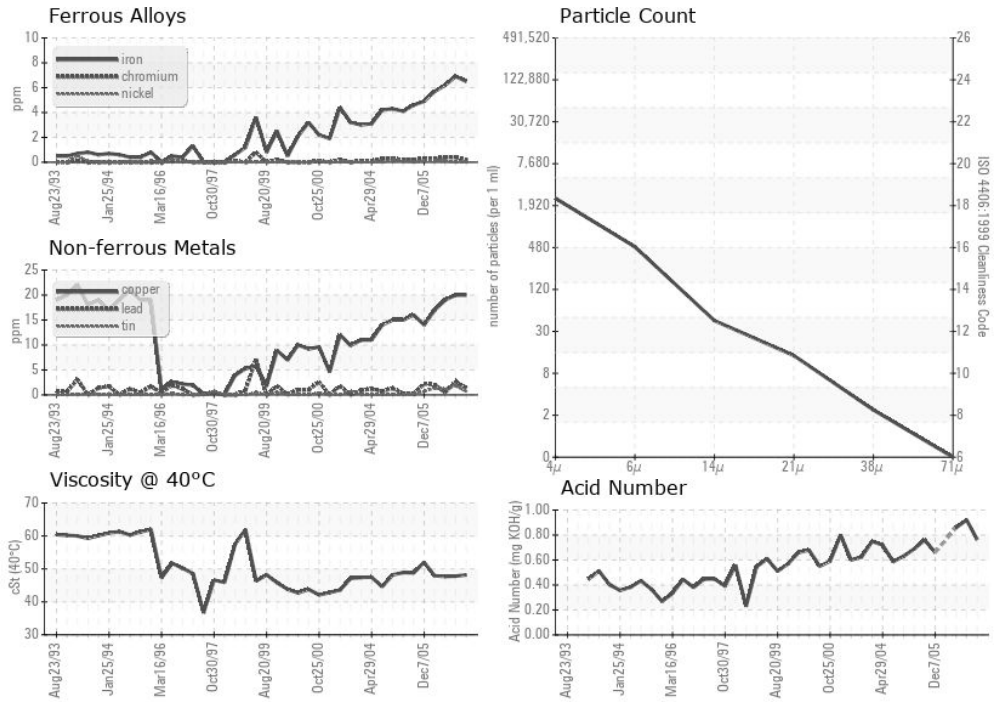


VISUAL	method	limit/base	current	history1	history2
White Metal	scalar	Visual*	NONE	NONE	VLITE
Yellow Metal	scalar	Visual*	NONE	NONE	NONE
Precipitate	scalar	Visual*	NONE	NONE	NONE
Silt	scalar	Visual*	NONE	NONE	NONE
Debris	scalar	Visual*	NONE	NONE	NONE
Sand/Dirt	scalar	Visual*	NONE	NONE	NONE
Appearance	scalar	Visual*	NORML	NORML	NORML
Odor	scalar	Visual*	NORML	NORML	NORML
Emulsified Water	scalar	Visual*	NEG	NEG	NEG
Free Water	scalar	Visual*	NEG	NEG	NEG

FLUID PROPERTIES	method	limit/base	current	history1	history2
Visc @ 40°C	cSt	ASTM D7279(m)	48.2	47.8	47.7

SAMPLE IMAGES	method	limit/base	current	history1	history2
Color			no image		
Bottom			no image		

## GRAPHS



**Laboratory** : WearCheck - C8-1175 Appleby Line, Burlington, ON L7L 5H9  
**Sample No.** : WC22056056 **Received** : 31 Jan 2007  
**Lab Number** : 01359024 **Tested** : 02 Feb 2007  
**Unique Number** : 2385422 **Diagnosed** :  
**Test Package** : IND 2 ( Additional Tests: SCREEN, TAN Man )

**ABC Manufacturing**  
 555 NORTH SERVICE ROAD EAST  
 Detroit,  
 US 76100  
 Contact: Jim Smith  
 jim.smith@abcmanufacturing.com  
 T: (311)555-1212  
 F: (311)555-1313

To discuss this sample report, contact Customer Service at 1-800-268-2131.  
 Test denoted (\*) outside scope of accreditation, (m) method modified, (e) tested at external lab.  
 Validity of results and interpretation are based on the sample and information as supplied.