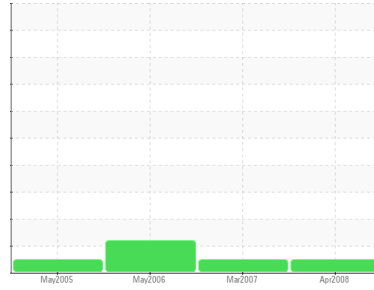




OIL ANALYSIS REPORT

Sample Rating Trend



WEAR



Machine Id
TRP DIESEL (S/N 97847-04)

Component
Diesel Engine

Fluid
ESSO XD-3 EXTRA SAE 40 (35 GAL)

DIAGNOSIS

Recommendation

Resample at the next service interval to monitor.

Wear

All component wear rates are normal. A decrease in the copper level is noted.

Contamination

There is no indication of any contamination in the component.

Fluid Condition

The condition of oil is suitable for further service.

SAMPLE INFORMATION		method	limit/base	current	history1	history2
Sample Number	Client Info			WC756224	PC293469	PC293041
Sample Date	Client Info			18 Apr 2008	27 Mar 2007	09 May 2006
Machine Age	hrs	Client Info		0	0	7378
Oil Age	hrs	Client Info		0	0	0
Oil Changed	Client Info			N/A	N/A	N/A
Sample Status				NORMAL	NORMAL	ABNORMAL

CONTAMINATION		method	limit/base	current	history1	history2
Fuel	WC Method			<1.0	<1.0	<1.0

WEAR METALS		method	limit/base	current	history1	history2
Iron	ppm	ASTM D5185(m)		47	47	33
Chromium	ppm	ASTM D5185(m)		1	2	1
Nickel	ppm	ASTM D5185(m)		0	0	0
Titanium	ppm	ASTM D5185(m)		<1	<1	<1
Silver	ppm	ASTM D5185(m)		0	<1	<1
Aluminum	ppm	ASTM D5185(m)		<1	2	2
Lead	ppm	ASTM D5185(m)		8	11	13
Copper	ppm	ASTM D5185(m)		231	269	327
Tin	ppm	ASTM D5185(m)		3	5	4
Vanadium	ppm	ASTM D5185(m)		0	<1	0

ADDITIVES		method	limit/base	current	history1	history2
Boron	ppm	ASTM D5185(m)		9	10	3
Barium	ppm	ASTM D5185(m)		<1	<1	<1
Molybdenum	ppm	ASTM D5185(m)		3	4	3
Manganese	ppm	ASTM D5185(m)		<1	<1	<1
Magnesium	ppm	ASTM D5185(m)		34	35	32
Calcium	ppm	ASTM D5185(m)		2312	2543	2348
Phosphorus	ppm	ASTM D5185(m)		882	958	888
Zinc	ppm	ASTM D5185(m)		1008	1059	987
Sulfur	ppm	ASTM D5185(m)		4157	4523	4050

CONTAMINANTS		method	limit/base	current	history1	history2
Silicon	ppm	ASTM D5185(m)		4	5	4
Sodium	ppm	ASTM D5185(m)		21	25	31
Potassium	ppm	ASTM D5185(m)		19	26	32
Glycol	%	ASTM D7922*		0.0	0.0	0.0

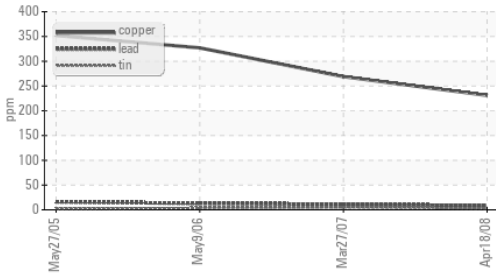
INFRA-RED		method	limit/base	current	history1	history2
Soot %	%	ASTM D7844*		0.3	0.3	0.1
Nitration	Abs/cm	ASTM D7624*		5	5	6
Sulfation	Abs/.1mm	ASTM D7415*		22	22	23

FLUID DEGRADATION		method	limit/base	current	history1	history2
Oxidation	Abs/.1mm	ASTM D7414*		11	12	14
Base Number (BN)	mg KOH/g	ASTM D2896*		3.69	3.92	2.82

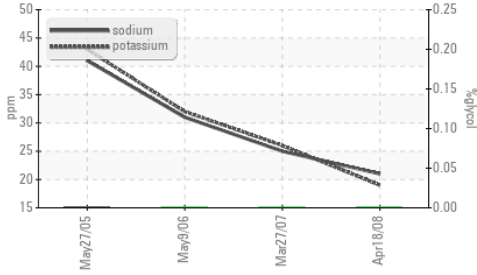


OIL ANALYSIS REPORT

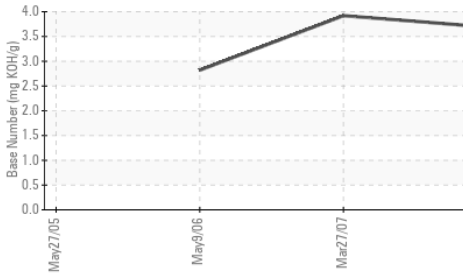
▲ Non-ferrous Metals



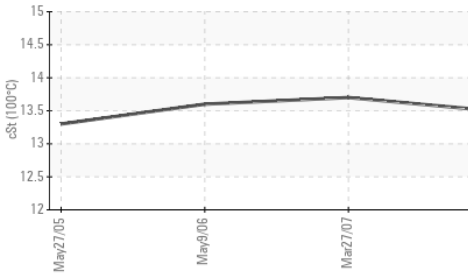
Glycol Contamination



Base Number



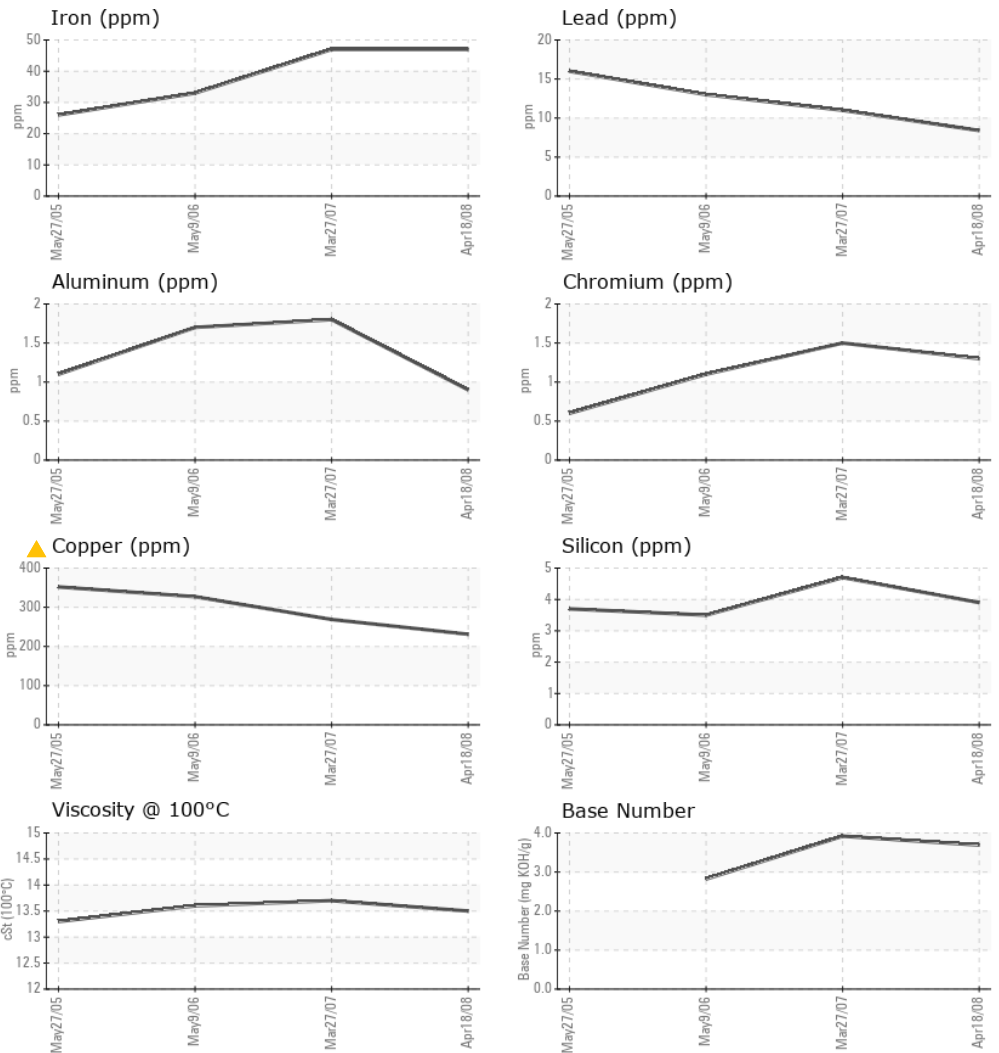
Viscosity @ 100°C



PARAMETER	method	limit/base	current	history1	history2
White Metal	scalar	Visual*	NONE	VLITE	NONE
Yellow Metal	scalar	Visual*	NONE	NONE	NONE
Precipitate	scalar	Visual*	NONE	NONE	NONE
Silt	scalar	Visual*	NONE	NONE	NONE
Debris	scalar	Visual*	NONE	NONE	NONE
Sand/Dirt	scalar	Visual*	NONE	NONE	NONE
Appearance	scalar	Visual*	NORML	NORML	NORML
Odor	scalar	Visual*	NORML	NORML	NORML
Emulsified Water	scalar	Visual*	NEG	NEG	NEG
Free Water	scalar	Visual*	NEG	NEG	NEG

FLUID PROPERTIES	method	limit/base	current	history1	history2
Visc @ 100°C	cSt	ASTM D7279(m)	13.5	13.7	13.6

GRAPHS



Laboratory : WearCheck - C8-1175 Appleby Line, Burlington, ON L7L 5H9
Sample No. : WC756224 **Received** : 28 Apr 2008
Lab Number : 01458740 **Diagnosed** : 29 Apr 2008
Unique Number : 2645528 **Diagnostician** :
Test Package : MOB 2 (Additional Tests: Glycol, Visual)

NEWFOUNDLAND POWER INC.
 50 DUFFY PLACE, PO BOX 8910
 ST. JOHNS, NL
 CA A1B 3P6
 Contact: Shane Reid
 sreid@newfoundlandpower.com
 T: (709)737-5209
 F: (709)737-2926

To discuss this sample report, contact Customer Service at 1-800-268-2131.
 Test denoted (*) outside scope of accreditation, (m) method modified, (e) tested at external lab.
 Validity of results and interpretation are based on the sample and information as supplied.