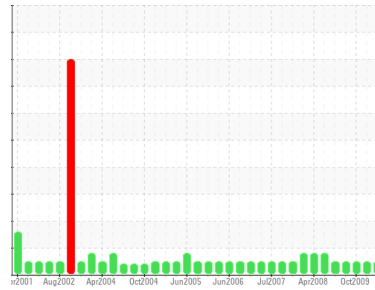




OIL ANALYSIS REPORT

Sample Rating Trend



NORMAL



Area
[87160]
 Machine Id
LOK-G2-GEBR

Component
Bearing
 Fluid
Hydro Safe HYDRO SAFE ISO 68 (27 LTR)

DIAGNOSIS

Recommendation

Resample at the next service interval to monitor.

Wear

All component wear rates are normal.

Contamination

There is no indication of any contamination in the component.

Fluid Condition

The condition of oil is suitable for further service.

SAMPLE INFORMATION

	method	limit/base	current	history1	history2
Sample Number	Client Info		WC782743	WC780733	WC759370
Sample Date	Client Info		08 Apr 2010	04 Nov 2009	07 Oct 2009
Machine Age	hrs	Client Info	0	0	0
Oil Age	hrs	Client Info	0	16	0
Oil Changed	Client Info		Changed	Changed	N/A
Sample Status			NORMAL	NORMAL	NORMAL

WEAR METALS

	method	limit/base	current	history1	history2
PQ	ASTM D8184*		9	9	13
Iron	ppm	ASTM D5185(m)	<1	<1	5
Chromium	ppm	ASTM D5185(m)	0	0	0
Nickel	ppm	ASTM D5185(m)	0	0	0
Titanium	ppm	ASTM D5185(m)	0	0	0
Silver	ppm	ASTM D5185(m)	0	0	0
Aluminum	ppm	ASTM D5185(m)	<1	<1	<1
Lead	ppm	ASTM D5185(m)	16	6	▲ 96
Copper	ppm	ASTM D5185(m)	<1	<1	1
Tin	ppm	ASTM D5185(m)	<1	<1	2
Vanadium	ppm	ASTM D5185(m)	0	0	0

ADDITIVES

	method	limit/base	current	history1	history2
Boron	ppm	ASTM D5185(m)	0	<1	<1
Barium	ppm	ASTM D5185(m)	0	0	0
Molybdenum	ppm	ASTM D5185(m)	0	0	0
Manganese	ppm	ASTM D5185(m)	0	0	0
Magnesium	ppm	ASTM D5185(m)	<1	0	0
Calcium	ppm	ASTM D5185(m)	<1	<1	<1
Phosphorus	ppm	ASTM D5185(m)	2	1	6
Zinc	ppm	ASTM D5185(m)	1	1	6
Sulfur	ppm	ASTM D5185(m)	1884	2012	2052

CONTAMINANTS

	method	limit/base	current	history1	history2
Silicon	ppm	ASTM D5185(m)	0	<1	<1
Sodium	ppm	ASTM D5185(m)	0	<1	<1
Potassium	ppm	ASTM D5185(m)	<1	<1	0

FLUID DEGRADATION

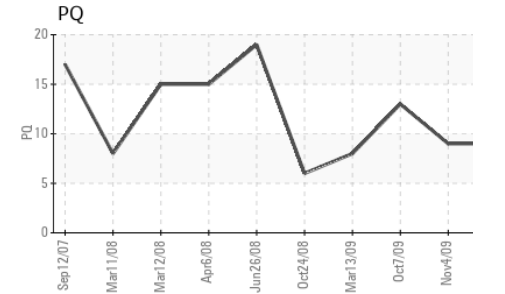
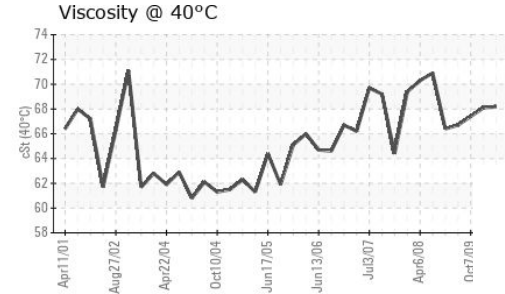
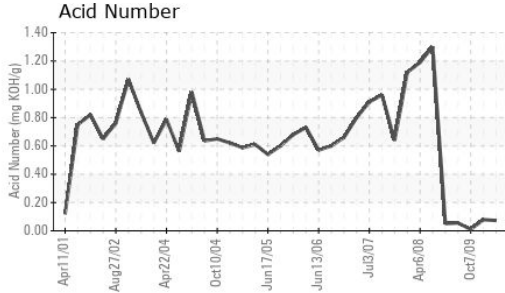
	method	limit/base	current	history1	history2
Acid Number (AN)	mg KOH/g	ASTM D974*	0.073	0.079	0.01

VISUAL

	method	limit/base	current	history1	history2	
White Metal	scalar	Visual*	NONE	VLITE	NONE	VLITE
Yellow Metal	scalar	Visual*	NONE	NONE	NONE	NONE
Precipitate	scalar	Visual*	NONE	NONE	NONE	NONE
Silt	scalar	Visual*	NONE	NONE	NONE	NONE
Debris	scalar	Visual*	NONE	VLITE	VLITE	VLITE
Sand/Dirt	scalar	Visual*	NONE	NONE	NONE	NONE
Appearance	scalar	Visual*	NORML	NORML	NORML	NORML
Odor	scalar	Visual*	NORML	NORML	NORML	NORML
Emulsified Water	scalar	Visual*		NEG	NEG	NEG
Free Water	scalar	Visual*		NEG	NEG	NEG

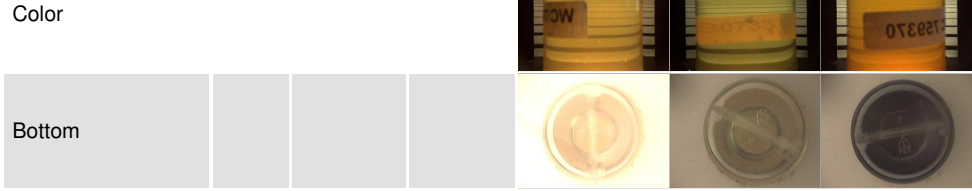


OIL ANALYSIS REPORT

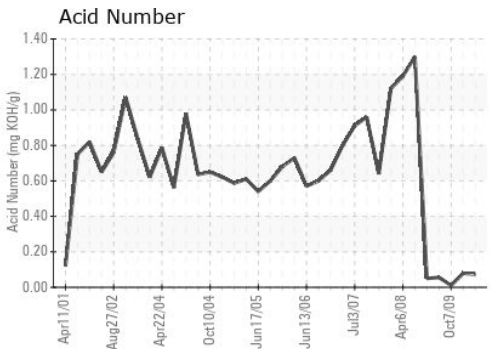
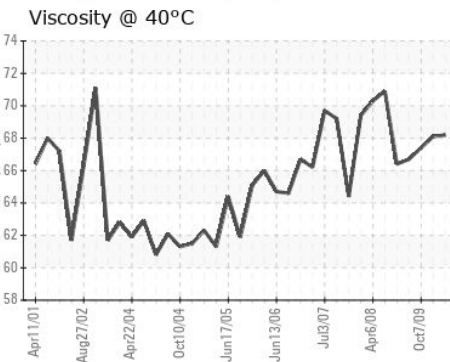
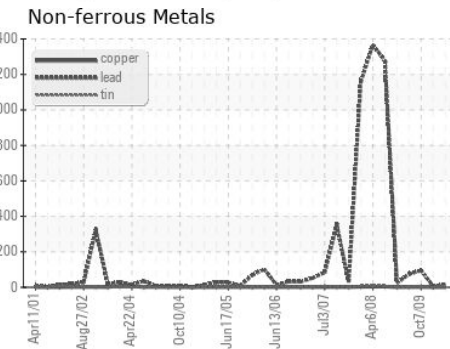
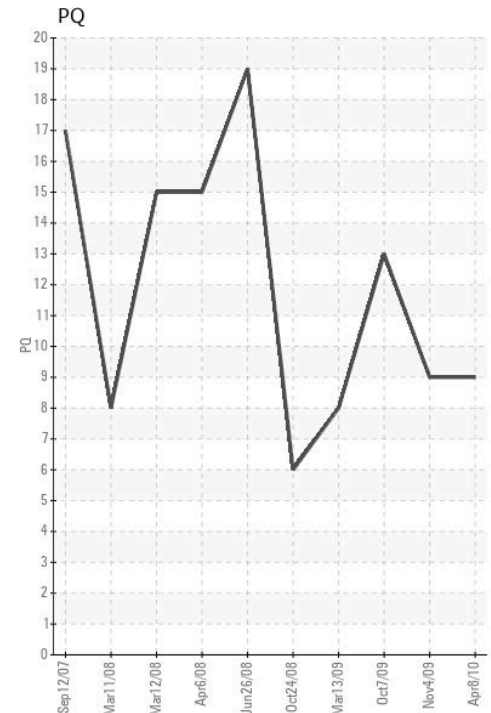
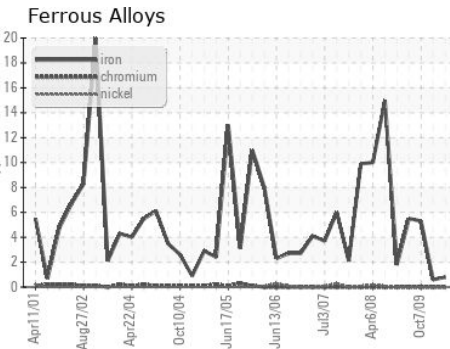


FLUID PROPERTIES		method	limit/base	current	history1	history2
Visc @ 40°C	cSt	ASTM D7279(m)		68.2	68.1	67.4

SAMPLE IMAGES		method	limit/base	current	history1	history2
---------------	--	--------	------------	---------	----------	----------



GRAPHS



ISO 17025:2017
Accredited
Laboratory

Laboratory : WearCheck - C8-1175 Appleby Line, Burlington, ON L7L 5H9
Sample No. : WC782743 **Received** : 09 Apr 2010
Lab Number : 01601438 **Diagnosed** : 13 Apr 2010
Unique Number : 3091310 **Diagnostician** :
Test Package : IND 2 (Additional Tests: TAN Man)

To discuss this sample report, contact Customer Service at 1-800-268-2131.
 Test denoted (*) outside scope of accreditation, (m) method modified, (e) tested at external lab.
 Validity of results and interpretation are based on the sample and information as supplied.

NEWFOUNDLAND POWER INC.
 50 DUFFY PLACE, PO BOX 8910
 ST. JOHNS, NL
 CA A1B 3P6
 Contact: Shane Reid
 sreid@newfoundlandpower.com
 T: (709)737-5209
 F: (709)737-2926