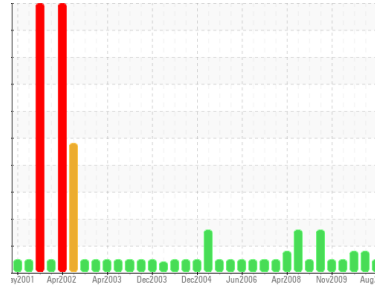




OIL ANALYSIS REPORT

Sample Rating Trend



NORMAL



Machine Id
SCV G2 THBR
 Component
Thrust Bearing
 Fluid
ESSO TERESSO ISO 68 (24 LTR)

DIAGNOSIS

Recommendation

Resample at the next service interval to monitor.

Wear

All component wear rates are normal.

Contamination

There is no indication of any contamination in the component.

Fluid Condition

The condition of oil is suitable for further service.

SAMPLE INFORMATION

	method	limit/base	current	history1	history2
Sample Number	Client Info		WC782722	WC782688	WC780857
Sample Date	Client Info		05 Aug 2010	23 Jun 2010	10 Jun 2010
Machine Age	hrs	Client Info	0	0	0
Oil Age	hrs	Client Info	0	0	0
Oil Changed	Client Info		Changed	N/A	N/A
Sample Status			NORMAL	ABNORMAL	ABNORMAL

WEAR METALS

	method	limit/base	current	history1	history2
PQ	ASTM D8184*		11	19	28
Iron	ppm	ASTM D5185(m)	5	▲ 23	▲ 24
Chromium	ppm	ASTM D5185(m)	0	<1	<1
Nickel	ppm	ASTM D5185(m)	0	<1	1
Titanium	ppm	ASTM D5185(m)	0	0	<1
Silver	ppm	ASTM D5185(m)	0	0	<1
Aluminum	ppm	ASTM D5185(m)	<1	<1	3
Lead	ppm	ASTM D5185(m)	<1	3	4
Copper	ppm	ASTM D5185(m)	<1	4	4
Tin	ppm	ASTM D5185(m)	9	▲ 77	▲ 72
Antimony	ppm	ASTM D5185(m)	1	5	---
Vanadium	ppm	ASTM D5185(m)	0	0	<1
Cadmium	ppm	ASTM D5185(m)	0	0	---

ADDITIVES

	method	limit/base	current	history1	history2
Boron	ppm	ASTM D5185(m)	0	1	<1
Barium	ppm	ASTM D5185(m)	0	0	<1
Molybdenum	ppm	ASTM D5185(m)	0	0	<1
Manganese	ppm	ASTM D5185(m)	0	<1	<1
Magnesium	ppm	ASTM D5185(m)	0	2	2
Calcium	ppm	ASTM D5185(m)	<1	2	1
Phosphorus	ppm	ASTM D5185(m)	6	3	2
Zinc	ppm	ASTM D5185(m)	<1	2	<1
Sulfur	ppm	ASTM D5185(m)	1744	1774	1783

CONTAMINANTS

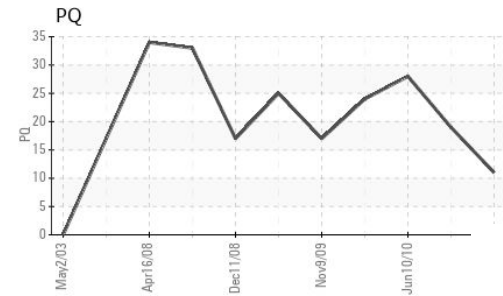
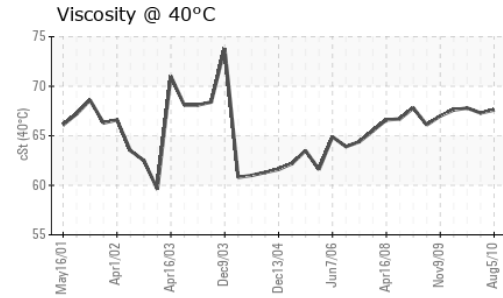
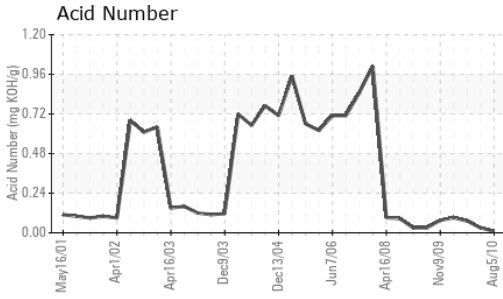
	method	limit/base	current	history1	history2
Silicon	ppm	ASTM D5185(m)	<1	4	4
Sodium	ppm	ASTM D5185(m)	1	2	8
Potassium	ppm	ASTM D5185(m)	0	0	7

FLUID DEGRADATION

	method	limit/base	current	history1	history2
Acid Number (AN)	mg KOH/g	ASTM D974*	0.01	0.03	0.072



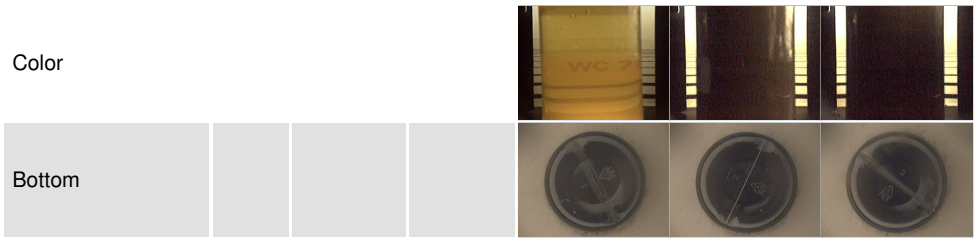
OIL ANALYSIS REPORT



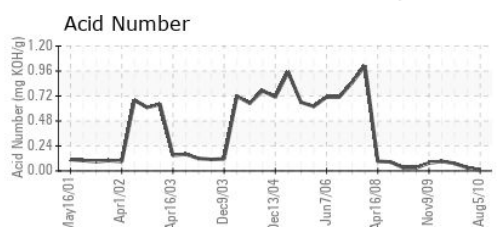
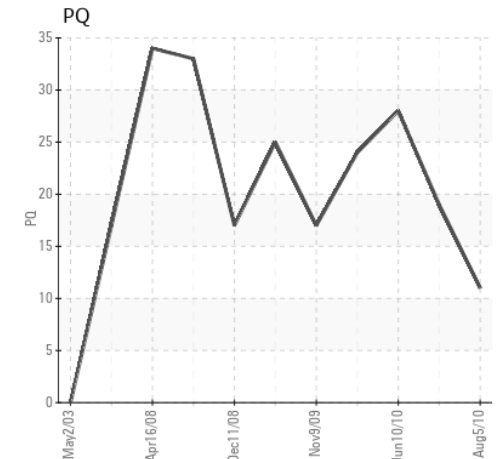
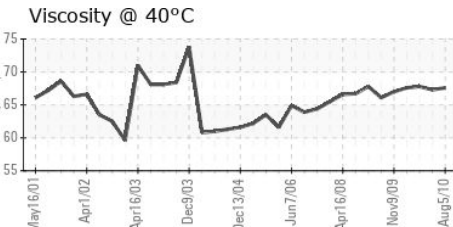
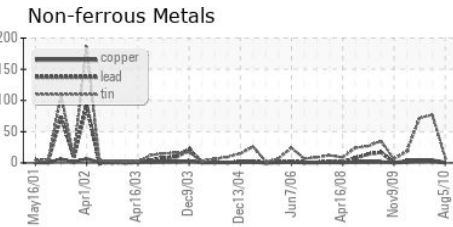
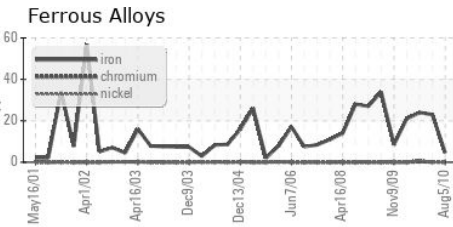
PARAMETER	method	limit/base	current	history1	history2
White Metal	scalar	Visual*	NONE	VLITE	NONE
Yellow Metal	scalar	Visual*	NONE	NONE	NONE
Precipitate	scalar	Visual*	NONE	NONE	NONE
Silt	scalar	Visual*	NONE	NONE	LIGHT
Debris	scalar	Visual*	NONE	VLITE	VLITE
Sand/Dirt	scalar	Visual*	NONE	NONE	NONE
Appearance	scalar	Visual*	NORML	NORML	HAZY
Odor	scalar	Visual*	NORML	NORML	NORML
Emulsified Water	scalar	Visual*	NEG	NEG	NEG
Free Water	scalar	Visual*	NEG	NEG	NEG

FLUID PROPERTIES	method	limit/base	current	history1	history2
Visc @ 40°C	cSt	ASTM D7279(m)	67.6	67.3	67.8

SAMPLE IMAGES	method	limit/base	current	history1	history2
---------------	--------	------------	---------	----------	----------



GRAPHS



Laboratory : WearCheck - C8-1175 Appleby Line, Burlington, ON L7L 5H9
Sample No. : WC782722 **Received** : 10 Aug 2010
Lab Number : 01626271 **Diagnosed** : 12 Aug 2010
Unique Number : 3159132 **Diagnostician** : Kevin Marson
Test Package : IND 2

NEWFOUNDLAND POWER INC.
 50 DUFFY PLACE, PO BOX 8910
 ST. JOHNS, NL
 CA A1B 3P6
 Contact: Shane Reid
 sreid@newfoundlandpower.com
 T: (709)737-5209
 F: (709)737-2926

To discuss this sample report, contact Customer Service at 1-800-268-2131.
 Test denoted (*) outside scope of accreditation, (m) method modified, (e) tested at external lab.
 Validity of results and interpretation are based on the sample and information as supplied.