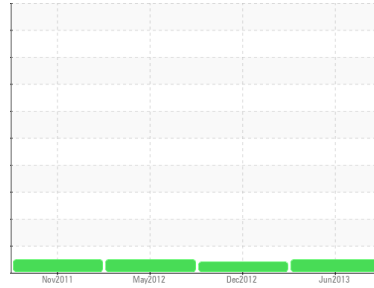




# OIL ANALYSIS REPORT

Sample Rating Trend

**NORMAL**



Machine Id  
**ARVA Crane Port Slewing (S/N 1804)**

Component  
**Port Gearbox**

Fluid  
**PETRO CANADA TRAXON 80W90 (6 LTR)**

## DIAGNOSIS

### Recommendation

Resample at the next service interval to monitor.

### Wear

All component wear rates are normal.

### Contamination

There is no indication of any contamination in the component.

### Fluid Condition

The TAN level is acceptable for this fluid. The condition of the oil is suitable for further service.

## SAMPLE INFORMATION

	method	limit/base	current	history1	history2
Sample Number	Client Info		<b>WC62005340</b>	WC62004985	WC62004471
Sample Date	Client Info		<b>12 Jun 2013</b>	03 Dec 2012	24 May 2012
Machine Age	hrs	Client Info	<b>1769</b>	1463	1274
Oil Age	hrs	Client Info	<b>306</b>	0	431
Oil Changed	Client Info		<b>Not Changed</b>	Changed	Not Changed
Sample Status			<b>NORMAL</b>	ABNORMAL	NORMAL

## CONTAMINATION

	method	limit/base	current	history1	history2
Water	WC Method		<b>NEG</b>	NEG	NEG

## WEAR METALS

	method	limit/base	current	history1	history2
Iron	ppm	ASTM D5185(m)	<b>52</b>	219	57
Chromium	ppm	ASTM D5185(m)	<b>&lt;1</b>	<1	<1
Nickel	ppm	ASTM D5185(m)	<b>0</b>	<1	0
Titanium	ppm	ASTM D5185(m)	<b>0</b>	0	0
Silver	ppm	ASTM D5185(m)	<b>0</b>	<1	<1
Aluminum	ppm	ASTM D5185(m)	<b>0</b>	<1	0
Lead	ppm	ASTM D5185(m)	<b>&lt;1</b>	2	<1
Copper	ppm	ASTM D5185(m)	<b>&lt;1</b>	3	2
Tin	ppm	ASTM D5185(m)	<b>0</b>	<1	0
Antimony	ppm	ASTM D5185(m)	<b>0</b>	<1	<1
Vanadium	ppm	ASTM D5185(m)	<b>0</b>	0	0
Beryllium	ppm	ASTM D5185(m)	<b>0</b>	0	0
Cadmium	ppm	ASTM D5185(m)	<b>0</b>	0	0

## ADDITIVES

	method	limit/base	current	history1	history2
Boron	ppm	ASTM D5185(m)	<b>265</b>	188	246
Barium	ppm	ASTM D5185(m)	<b>&lt;1</b>	<1	0
Molybdenum	ppm	ASTM D5185(m)	<b>&lt;1</b>	<1	<1
Manganese	ppm	ASTM D5185(m)	<b>&lt;1</b>	2	<1
Magnesium	ppm	ASTM D5185(m)	<b>&lt;1</b>	1	2
Calcium	ppm	ASTM D5185(m)	<b>12</b>	9	9
Phosphorus	ppm	ASTM D5185(m)	<b>1318</b>	1029	1102
Zinc	ppm	ASTM D5185(m)	<b>10</b>	8	8
Sulfur	ppm	ASTM D5185(m)	<b>25070</b>	23096	25880
Lithium	ppm	ASTM D5185(m)	<b>&lt;1</b>	1	1

## CONTAMINANTS

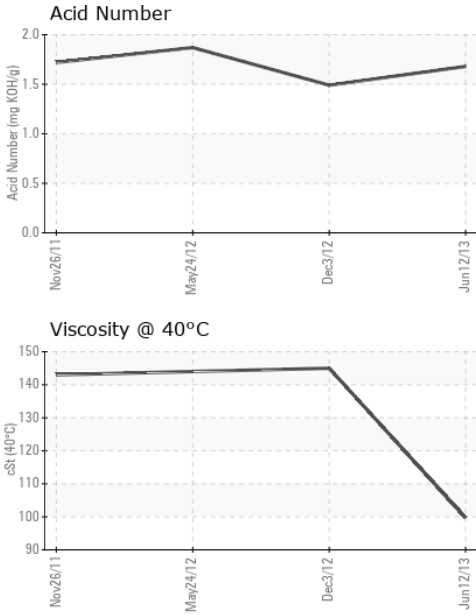
	method	limit/base	current	history1	history2
Silicon	ppm	ASTM D5185(m)	<b>2</b>	6	5
Sodium	ppm	ASTM D5185(m)	<b>0</b>	0	0
Potassium	ppm	ASTM D5185(m)	<b>1</b>	<1	2

## FLUID DEGRADATION

	method	limit/base	current	history1	history2
Acid Number (AN)	mg KOH/g	ASTM D974*	<b>1.68</b>	1.49	1.87



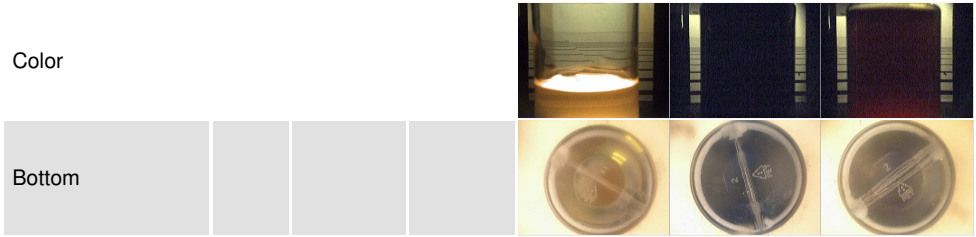
# OIL ANALYSIS REPORT



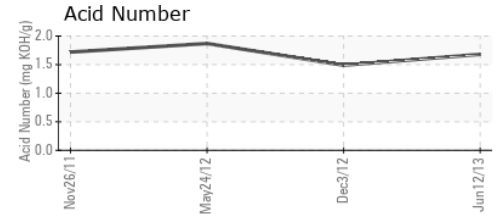
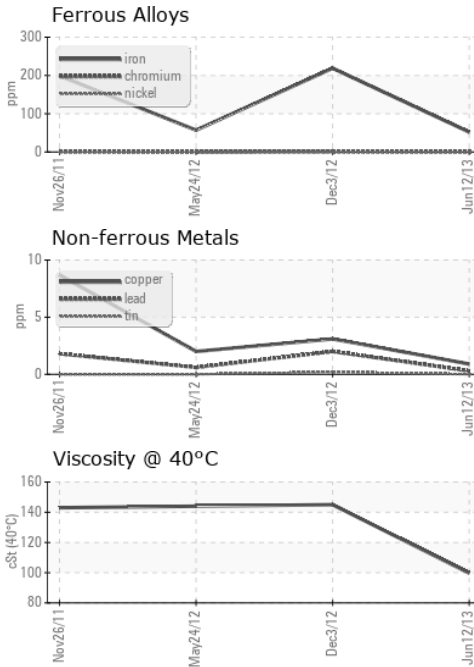
VISUAL	method	limit/base	current	history1	history2
White Metal	scalar	Visual*	NONE	<b>NONE</b>	VLITE
Yellow Metal	scalar	Visual*	NONE	<b>NONE</b>	NONE
Precipitate	scalar	Visual*	NONE	<b>NONE</b>	NONE
Silt	scalar	Visual*	NONE	<b>NONE</b>	NONE
Debris	scalar	Visual*	NONE	<b>VLITE</b>	VLITE
Sand/Dirt	scalar	Visual*	NONE	<b>NONE</b>	NONE
Appearance	scalar	Visual*	NORML	<b>NORML</b>	NORML
Odor	scalar	Visual*	NORML	<b>NORML</b>	NORML
Emulsified Water	scalar	Visual*		<b>NEG</b>	NEG
Free Water	scalar	Visual*		<b>NEG</b>	NEG

FLUID PROPERTIES	method	limit/base	current	history1	history2
Visc @ 40°C	cSt	ASTM D7279(m)	<b>99.7</b>	▲ 145	144
Fluid Type		In-house*	<b>SAE_GEAR</b>	SAE_GEAR	SAE_GEAR

SAMPLE IMAGES	method	limit/base	current	history1	history2
---------------	--------	------------	---------	----------	----------



## GRAPHS



**Laboratory** : WearCheck - C8-1175 Appleby Line, Burlington, ON L7L 5H9  
**Sample No.** : WC62005340  
**Lab Number** : 01845992  
**Unique Number** : 3739292  
**Test Package** : MAR 2 ( Additional Tests: FluidDetermination )

**CANADIAN COAST GUARD**  
 CCGS GRIFFON, PO BOX 1000, 401 KING ST.W  
 Prescott, ON  
 CA K6V 5T3  
 Contact: Senior Engineer  
 griffonse@ccgs-ngcc.gc.ca  
 T: (519)312-1045  
 F: (519)312-1045

To discuss this sample report, contact Customer Service at 1-800-268-2131.  
 Test denoted (\*) outside scope of accreditation, (m) method modified, (e) tested at external lab.  
 Validity of results and interpretation are based on the sample and information as supplied.