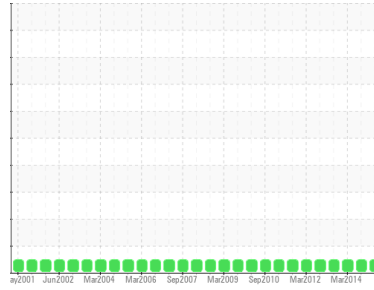




OIL ANALYSIS REPORT

Sample Rating Trend

NORMAL



Machine Id
NCH G1 LGBR
 Component
Bearing
 Fluid
ESSO TERESSO ISO 68 (95 LTR)

DIAGNOSIS

Recommendation
 Resample at the next service interval to monitor.

Wear
 All component wear rates are normal.

Contamination
 The system cleanliness is acceptable for your target ISO 4406 cleanliness code. The system and fluid cleanliness is acceptable.

Fluid Condition
 The AN level is acceptable for this fluid. The condition of the oil is suitable for further service.

SAMPLE INFORMATION

	method	limit/base	current	history1	history2
Sample Number	Client Info		WC925373	WC892224	WC838261
Sample Date	Client Info		11 Jan 2016	15 Sep 2014	12 Mar 2014
Machine Age	yrs	Client Info	0	0	0
Oil Age	yrs	Client Info	0	0	0
Oil Changed	Client Info		N/A	Changed	N/A
Sample Status			NORMAL	NORMAL	NORMAL

CONTAMINATION

	method	limit/base	current	history1	history2
Water	WC Method	>0.1	NEG	NEG	NEG

WEAR METALS

	method	limit/base	current	history1	history2
PQ	ASTM D8184*		6	10	5
Iron	ppm	ASTM D5185(m) >63	0	<1	<1
Chromium	ppm	ASTM D5185(m)	0	0	0
Nickel	ppm	ASTM D5185(m)	0	0	0
Titanium	ppm	ASTM D5185(m)	0	0	0
Silver	ppm	ASTM D5185(m)	0	0	0
Aluminum	ppm	ASTM D5185(m) >2	<1	<1	<1
Lead	ppm	ASTM D5185(m) >161	<1	2	1
Copper	ppm	ASTM D5185(m) >13	<1	2	<1
Tin	ppm	ASTM D5185(m) >27	0	<1	0
Antimony	ppm	ASTM D5185(m)	0	0	0
Vanadium	ppm	ASTM D5185(m)	0	0	0
Beryllium	ppm	ASTM D5185(m)	0	0	0
Cadmium	ppm	ASTM D5185(m)	0	<1	<1

ADDITIVES

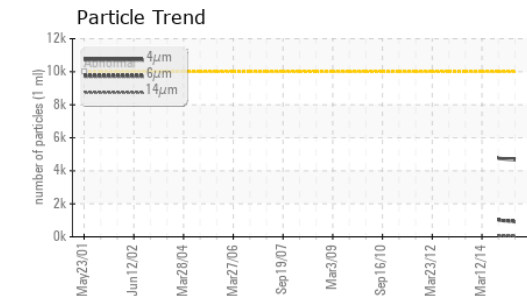
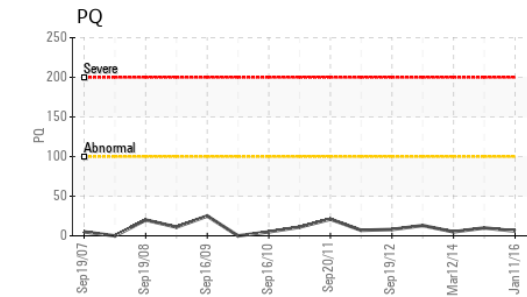
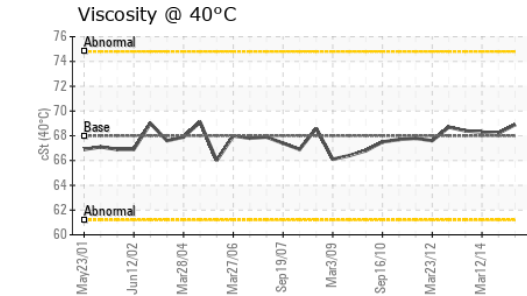
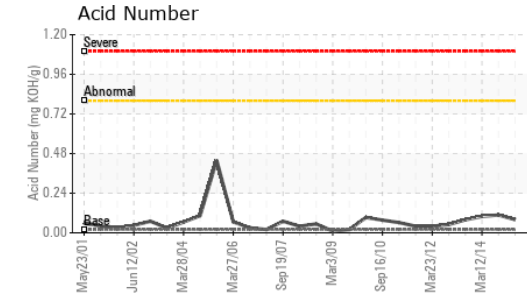
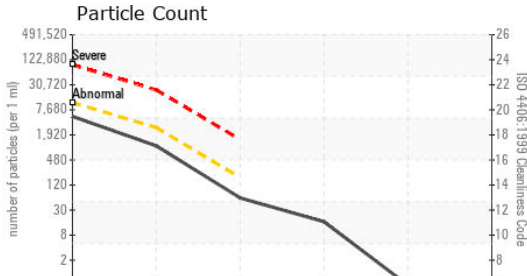
	method	limit/base	current	history1	history2
Boron	ppm	ASTM D5185(m) 4.5	0	<1	<1
Barium	ppm	ASTM D5185(m) 0.4	0	0	0
Molybdenum	ppm	ASTM D5185(m) 0	0	0	0
Manganese	ppm	ASTM D5185(m)	0	<1	<1
Magnesium	ppm	ASTM D5185(m) 0	0	0	0
Calcium	ppm	ASTM D5185(m) 0	0	<1	<1
Phosphorus	ppm	ASTM D5185(m) 0.7	2	<1	<1
Zinc	ppm	ASTM D5185(m) 0	3	8	4
Sulfur	ppm	ASTM D5185(m) 1315	2230	2242	2199
Lithium	ppm	ASTM D5185(m)	<1	<1	<1

CONTAMINANTS

	method	limit/base	current	history1	history2
Silicon	ppm	ASTM D5185(m) >12	<1	<1	<1
Sodium	ppm	ASTM D5185(m)	<1	2	2
Potassium	ppm	ASTM D5185(m) >20	0	0	0



OIL ANALYSIS REPORT



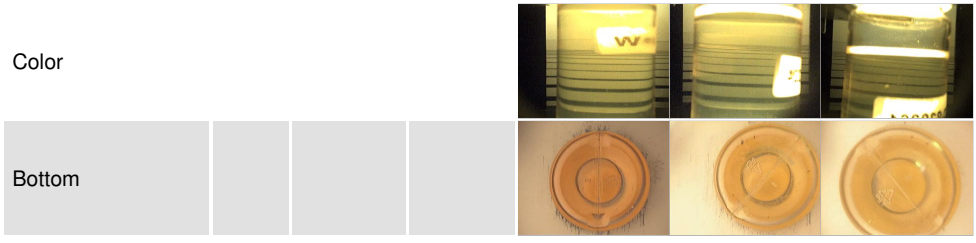
FLUID CLEANLINESS	method	limit/base	current	history1	history2
Particles >4µm	ASTM D7647	>10000	4670	4751	---
Particles >6µm	ASTM D7647	>2500	916	1013	---
Particles >14µm	ASTM D7647	>160	52	52	---
Particles >21µm	ASTM D7647	>40	14	9	---
Particles >38µm	ASTM D7647	>10	0	0	---
Particles >71µm	ASTM D7647	>3	0	0	---
Oil Cleanliness	ISO 4406 (c)	>20/18/14	19/17/13	19/17/13	---

FLUID DEGRADATION	method	limit/base	current	history1	history2
Acid Number (AN)	mg KOH/g ASTM D974*	0.02	0.08	0.108	0.099

VISUAL	method	limit/base	current	history1	history2
White Metal	scalar Visual*	NONE	NONE	NONE	NONE
Yellow Metal	scalar Visual*	NONE	NONE	NONE	NONE
Precipitate	scalar Visual*	NONE	NONE	NONE	NONE
Silt	scalar Visual*	NONE	NONE	NONE	NONE
Debris	scalar Visual*	NONE	VLITE	VLITE	VLITE
Sand/Dirt	scalar Visual*	NONE	NONE	NONE	NONE
Appearance	scalar Visual*	NORML	NORML	NORML	NORML
Odor	scalar Visual*	NORML	NORML	NORML	NORML
Emulsified Water	scalar Visual*	>0.1	NEG	NEG	NEG
Free Water	scalar Visual*		NEG	NEG	NEG

FLUID PROPERTIES	method	limit/base	current	history1	history2
Visc @ 40°C	cSt ASTM D7279(m)	68	68.9	68.2	68.3

SAMPLE IMAGES	method	limit/base	current	history1	history2
---------------	--------	------------	---------	----------	----------



Laboratory : WearCheck - C8-1175 Appleby Line, Burlington, ON L7L 5H9
Sample No. : WC925373 **Received** : 26 Jan 2016
Lab Number : **02049053** **Diagnosed** : 27 Jan 2016
Unique Number : 4251356 **Diagnostician** : Wes Davis
Test Package : IND 2 (Additional Tests: PrtCount)

NEWFOUNDLAND POWER INC.
 50 DUFFY PLACE, PO BOX 8910
 ST. JOHNS, NL
 CA A1B 3P6
 Contact: Paul Martin
 pmartin@newfoundlandpower.com
 T:
 F: (709)737-2926

To discuss this sample report, contact Customer Service at 1-800-268-2131.
 Test denoted (*) outside scope of accreditation, (m) method modified, (e) tested at external lab.
 Validity of results and interpretation are based on the sample and information as supplied.