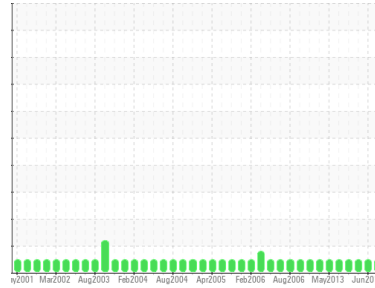




# OIL ANALYSIS REPORT

Sample Rating Trend



**NORMAL**



Machine Id  
**VIC-G1-FWBR-01**  
 Component  
**Bearing**  
 Fluid  
**ESSO TERESSO ISO 68 (3 LTR)**

## DIAGNOSIS

### Recommendation

Resample at the next service interval to monitor.

### Wear

All component wear rates are normal.

### Contamination

There is no indication of any contamination in the component.

### Fluid Condition

The AN level is acceptable for this fluid. The condition of the oil is suitable for further service.

SAMPLE INFORMATION		method	limit/base	current	history1	history2
Sample Number	Client Info			<b>WC925378</b>	WC925451	WC892231
Sample Date	Client Info			<b>25 Jan 2016</b>	18 Jun 2015	01 Dec 2014
Machine Age	days	Client Info		<b>0</b>	0	0
Oil Age	days	Client Info		<b>0</b>	0	0
Oil Changed	Client Info			<b>N/A</b>	N/A	N/A
Sample Status				<b>NORMAL</b>	NORMAL	NORMAL

CONTAMINATION		method	limit/base	current	history1	history2
Water	WC Method		>0.1	<b>NEG</b>	NEG	NEG

WEAR METALS		method	limit/base	current	history1	history2
PQ		ASTM D8184*		<b>7</b>	10	8
Iron	ppm	ASTM D5185(m)	>63	<b>2</b>	2	2
Chromium	ppm	ASTM D5185(m)		<b>0</b>	0	0
Nickel	ppm	ASTM D5185(m)		<b>0</b>	0	0
Titanium	ppm	ASTM D5185(m)		<b>0</b>	0	0
Silver	ppm	ASTM D5185(m)		<b>0</b>	0	0
Aluminum	ppm	ASTM D5185(m)	>2	<b>&lt;1</b>	0	<1
Lead	ppm	ASTM D5185(m)	>161	<b>10</b>	7	8
Copper	ppm	ASTM D5185(m)	>13	<b>&lt;1</b>	<1	<1
Tin	ppm	ASTM D5185(m)	>27	<b>1</b>	<1	<1
Antimony	ppm	ASTM D5185(m)		<b>1</b>	<1	<1
Vanadium	ppm	ASTM D5185(m)		<b>0</b>	0	0
Beryllium	ppm	ASTM D5185(m)		<b>0</b>	0	0
Cadmium	ppm	ASTM D5185(m)		<b>0</b>	<1	<1

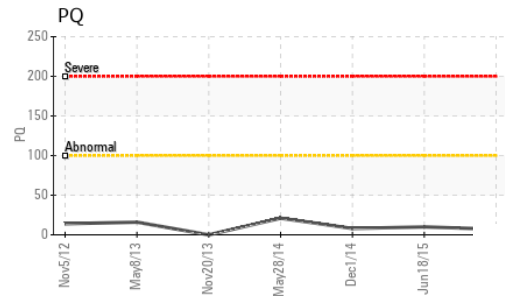
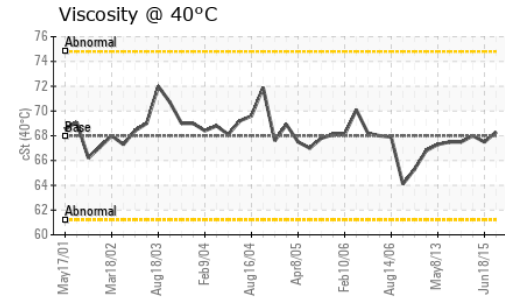
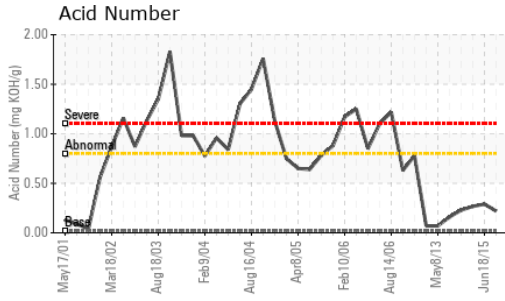
ADDITIVES		method	limit/base	current	history1	history2
Boron	ppm	ASTM D5185(m)	4.5	<b>0</b>	<1	<1
Barium	ppm	ASTM D5185(m)	0.4	<b>&lt;1</b>	<1	<1
Molybdenum	ppm	ASTM D5185(m)	0	<b>0</b>	0	0
Manganese	ppm	ASTM D5185(m)		<b>0</b>	<1	<1
Magnesium	ppm	ASTM D5185(m)	0	<b>0</b>	0	0
Calcium	ppm	ASTM D5185(m)	0	<b>0</b>	<1	<1
Phosphorus	ppm	ASTM D5185(m)	0.7	<b>8</b>	9	10
Zinc	ppm	ASTM D5185(m)	0	<b>&lt;1</b>	<1	<1
Sulfur	ppm	ASTM D5185(m)	1315	<b>1880</b>	2007	1895
Lithium	ppm	ASTM D5185(m)		<b>&lt;1</b>	<1	<1

CONTAMINANTS		method	limit/base	current	history1	history2
Silicon	ppm	ASTM D5185(m)	>12	<b>0</b>	0	0
Sodium	ppm	ASTM D5185(m)		<b>0</b>	0	0
Potassium	ppm	ASTM D5185(m)	>20	<b>0</b>	0	<1

FLUID DEGRADATION		method	limit/base	current	history1	history2
Acid Number (AN)	mg KOH/g	ASTM D974*	0.02	<b>0.22</b>	0.29	0.267



# OIL ANALYSIS REPORT

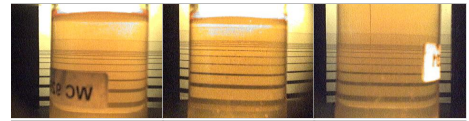


VISUAL	method	limit/base	current	history1	history2
White Metal	scalar	Visual*	NONE	NONE	NONE
Yellow Metal	scalar	Visual*	NONE	NONE	NONE
Precipitate	scalar	Visual*	NONE	NONE	NONE
Silt	scalar	Visual*	NONE	NONE	NONE
Debris	scalar	Visual*	NONE	NONE	VLITE
Sand/Dirt	scalar	Visual*	NONE	NONE	NONE
Appearance	scalar	Visual*	NORML	NORML	NORML
Odor	scalar	Visual*	NORML	NORML	NORML
Emulsified Water	scalar	Visual*	>0.1	NEG	NEG
Free Water	scalar	Visual*		NEG	NEG

FLUID PROPERTIES	method	limit/base	current	history1	history2
Visc @ 40°C	cSt	ASTM D7279(m)	68	68.3	67.5

SAMPLE IMAGES	method	limit/base	current	history1	history2
---------------	--------	------------	---------	----------	----------

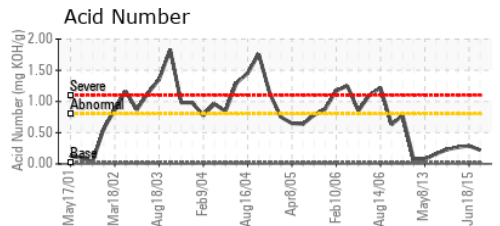
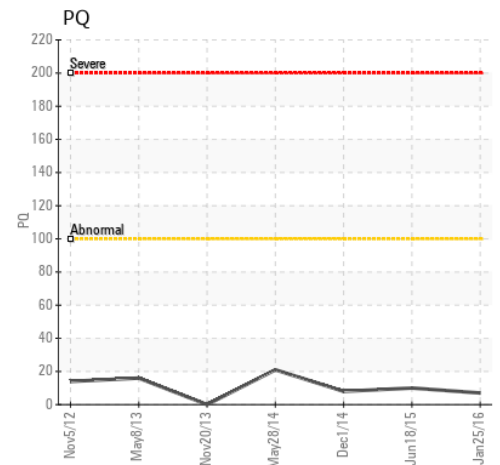
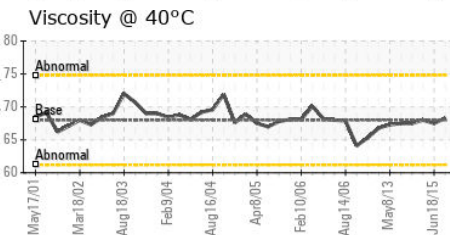
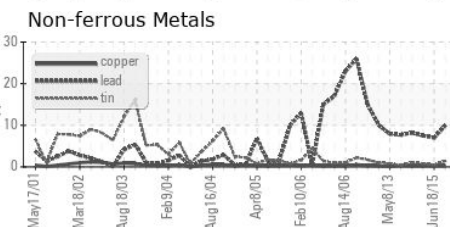
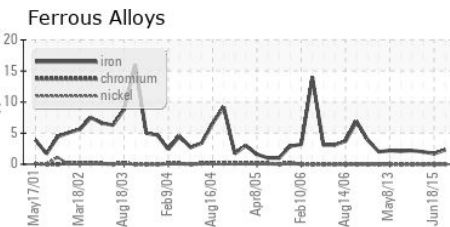
Color



Bottom



## GRAPHS



Laboratory : WearCheck - C8-1175 Appleby Line, Burlington, ON L7L 5H9  
 Sample No. : WC925378 Received : 26 Jan 2016  
 Lab Number : 02049063 Diagnosed : 27 Jan 2016  
 Unique Number : 4251366 Diagnostician : Wes Davis  
 Test Package : IND 2

**NEWFOUNDLAND POWER INC.**  
 50 DUFFY PLACE, PO BOX 8910  
 ST. JOHNS, NL  
 CA A1B 3P6  
 Contact: Paul Martin  
 pmartin@newfoundlandpower.com  
 T:  
 F: (709)737-2926

To discuss this sample report, contact Customer Service at 1-800-268-2131.  
 Test denoted (\*) outside scope of accreditation, (m) method modified, (e) tested at external lab.  
 Validity of results and interpretation are based on the sample and information as supplied.