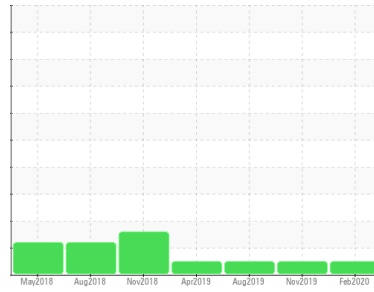




# OIL ANALYSIS REPORT

Sample Rating Trend



**NORMAL**



Area  
**BUILDING 46 - GRAIN ELEVATOR [130098]**  
 Machine Id  
**B46 PULL EXHAUSTER GEAR BOX (S/N 46EXH1)**  
 Component  
**Blower**  
 Fluid  
**LUBRICATION ENG DUOLEC 1604 ISO 150 (60 LTR)**

## DIAGNOSIS

### Recommendation

Resample at the next service interval to monitor.  
 Please note that this is a corrected copy for data entry updates.

### Wear

All component wear rates are normal.

### Contamination

There is no indication of any contamination in the oil.

### Fluid Condition

The AN level is acceptable for this fluid. The condition of the oil is suitable for further service.

SAMPLE INFORMATION		method	limit/base	current	history1	history2
Sample Number	Client Info			<b>WC0403887</b>	WC0386000	WC0308540
Sample Date	Client Info			<b>19 Feb 2020</b>	27 Nov 2019	14 Aug 2019
Machine Age	mths	Client Info		<b>0</b>	0	0
Oil Age	mths	Client Info		<b>0</b>	0	0
Oil Changed	Client Info			<b>N/A</b>	N/A	N/A
Sample Status				<b>NORMAL</b>	NORMAL	NORMAL

CONTAMINATION		method	limit/base	current	history1	history2
Water	WC Method			<b>NEG</b>	NEG	NEG

WEAR METALS		method	limit/base	current	history1	history2
PQ		ASTM D8184*		<b>10</b>	0	9
Iron	ppm	ASTM D5185(m)	>20	<b>7</b>	8	14
Chromium	ppm	ASTM D5185(m)	>20	<b>&lt;1</b>	<1	1
Nickel	ppm	ASTM D5185(m)	>20	<b>&lt;1</b>	0	<1
Titanium	ppm	ASTM D5185(m)		<b>0</b>	0	0
Silver	ppm	ASTM D5185(m)		<b>&lt;1</b>	0	0
Aluminum	ppm	ASTM D5185(m)	>20	<b>&lt;1</b>	<1	1
Lead	ppm	ASTM D5185(m)	>20	<b>2</b>	<1	11
Copper	ppm	ASTM D5185(m)	>20	<b>1</b>	<1	1
Tin	ppm	ASTM D5185(m)	>20	<b>0</b>	0	0
Antimony	ppm	ASTM D5185(m)		<b>&lt;1</b>	<1	<1
Vanadium	ppm	ASTM D5185(m)		<b>0</b>	0	0
Beryllium	ppm	ASTM D5185(m)		<b>0</b>	0	0
Cadmium	ppm	ASTM D5185(m)		<b>0</b>	0	0

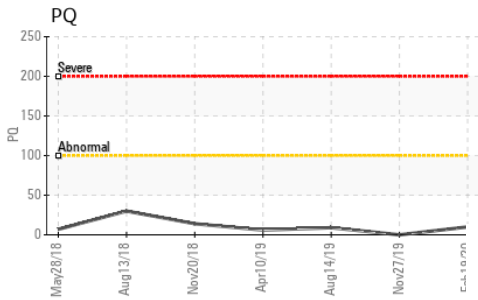
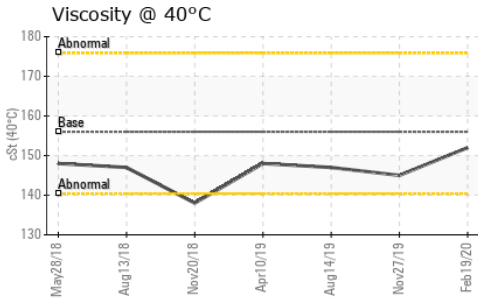
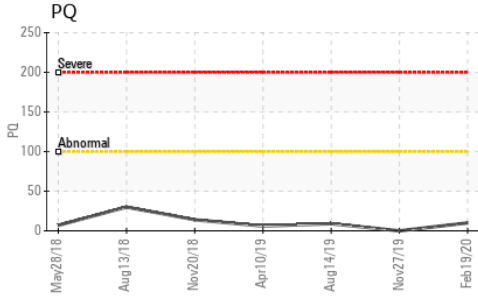
ADDITIVES		method	limit/base	current	history1	history2
Boron	ppm	ASTM D5185(m)		<b>34</b>	14	46
Barium	ppm	ASTM D5185(m)		<b>&lt;1</b>	<1	1
Molybdenum	ppm	ASTM D5185(m)		<b>0</b>	0	<1
Manganese	ppm	ASTM D5185(m)		<b>&lt;1</b>	<1	<1
Magnesium	ppm	ASTM D5185(m)		<b>0</b>	<1	2
Calcium	ppm	ASTM D5185(m)		<b>2</b>	<1	6
Phosphorus	ppm	ASTM D5185(m)		<b>465</b>	482	961
Zinc	ppm	ASTM D5185(m)		<b>2</b>	10	42
Sulfur	ppm	ASTM D5185(m)		<b>5654</b>	15060	14427
Lithium	ppm	ASTM D5185(m)		<b>&lt;1</b>	<1	<1

CONTAMINANTS		method	limit/base	current	history1	history2
Silicon	ppm	ASTM D5185(m)	>15	<b>11</b>	8	8
Sodium	ppm	ASTM D5185(m)		<b>0</b>	<1	2
Potassium	ppm	ASTM D5185(m)	>20	<b>&lt;1</b>	<1	<1

FLUID DEGRADATION		method	limit/base	current	history1	history2
Acid Number (AN)	mg KOH/g	ASTM D974*		<b>1.02</b>	1.44	2.09



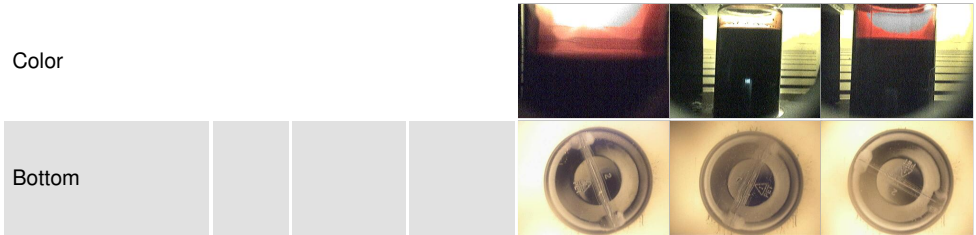
# OIL ANALYSIS REPORT



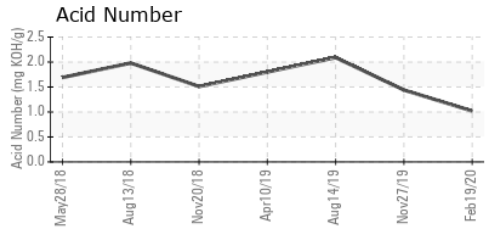
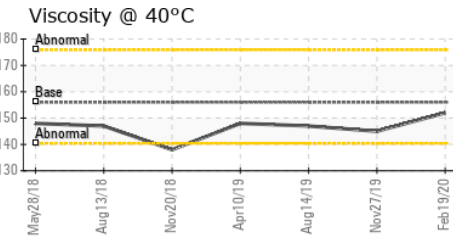
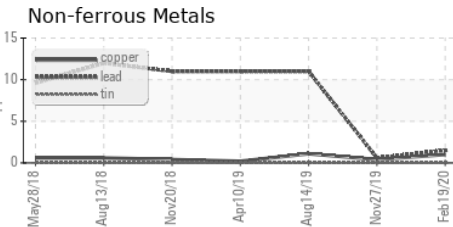
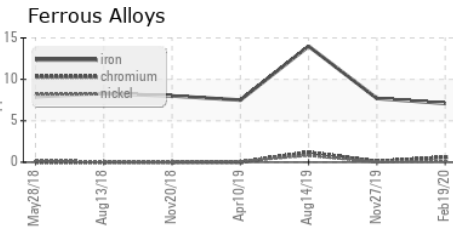
VISUAL	method	limit/base	current	history1	history2
White Metal	scalar	Visual*	NONE	VLITE	NONE
Yellow Metal	scalar	Visual*	NONE	NONE	NONE
Precipitate	scalar	Visual*	NONE	NONE	NONE
Silt	scalar	Visual*	NONE	NONE	NONE
Debris	scalar	Visual*	NONE	VLITE	NONE
Sand/Dirt	scalar	Visual*	NONE	NONE	NONE
Appearance	scalar	Visual*	NORML	NORML	NORML
Odor	scalar	Visual*	NORML	NORML	NORML
Emulsified Water	scalar	Visual*	NEG	NEG	NEG
Free Water	scalar	Visual*	NEG	NEG	NEG

FLUID PROPERTIES	method	limit/base	current	history1	history2
Visc @ 40°C	cSt	ASTM D7279(m)	156	152	145

SAMPLE IMAGES	method	limit/base	current	history1	history2
---------------	--------	------------	---------	----------	----------



## GRAPHS



**Laboratory** : WearCheck - C8-1175 Appleby Line, Burlington, ON L7L 5H9  
**Sample No.** : WC0403887 **Received** : 05 Mar 2020  
**Lab Number** : **02341832** **Tested** : 03 Jul 2024  
**Unique Number** : 5017260 **Diagnosed** : 03 Jul 2024 - Kevin Marson  
**Test Package** : IND 2 ( Additional Tests: PQ, TAN Man )

**HIRAM WALKER & SONS LTD.**  
 2072 RIVERSIDE DRIVE EAST, BOX 2518  
 WINDSOR, ON  
 CA N8Y 4S5  
 Contact: Matt Morand  
 matt.morand@pernod-ricard.com  
 T: (519)561-5359  
 F: (519)971-5719

To discuss this sample report, contact Customer Service at 1-800-268-2131.  
 Test denoted (\*) outside scope of accreditation, (m) method modified, (e) tested at external lab.  
 Validity of results and interpretation are based on the sample and information as supplied.