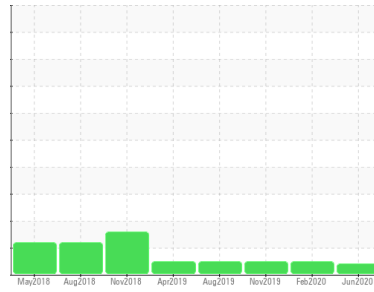




# OIL ANALYSIS REPORT

## Sample Rating Trend



## ADDITIVES



Area

**BUILDING 46 - GRAIN ELEVATOR [134379]**

Machine Id

**B46 PULL EXHAUSTER GEAR BOX (S/N 46EXH1)**

Component

**Blower**

Fluid

**LUBRICATION ENG DUOLEC 1604 ISO 150 (60 LTR)**

### DIAGNOSIS

#### Recommendation

Confirm the source of the lubricant being utilized for top-up/fill. Resample at the next service interval to monitor. Please note that this is a corrected copy for data entry updates.

#### Wear

All component wear rates are normal.

#### Contamination

There is no indication of any contamination in the oil.

#### Fluid Condition

Additive levels indicate the addition of a different brand, or type of oil. The AN level is acceptable for this fluid. The condition of the oil is suitable for further service.

### SAMPLE INFORMATION

	method	limit/base	current	history1	history2
Sample Number	Client Info		<b>WC0435410</b>	WC0403887	WC0386000
Sample Date	Client Info		<b>03 Jun 2020</b>	19 Feb 2020	27 Nov 2019
Machine Age	mths	Client Info	<b>0</b>	0	0
Oil Age	mths	Client Info	<b>0</b>	0	0
Oil Changed	Client Info		<b>N/A</b>	N/A	N/A
Sample Status			<b>ATTENTION</b>	NORMAL	NORMAL

### CONTAMINATION

	method	limit/base	current	history1	history2
Water	WC Method		<b>NEG</b>	NEG	NEG

### WEAR METALS

	method	limit/base	current	history1	history2
PQ	ASTM D8184*		<b>0</b>	10	0
Iron	ppm	ASTM D5185(m) >20	<b>3</b>	7	8
Chromium	ppm	ASTM D5185(m) >20	<b>0</b>	<1	<1
Nickel	ppm	ASTM D5185(m) >20	<b>&lt;1</b>	<1	0
Titanium	ppm	ASTM D5185(m)	<b>0</b>	0	0
Silver	ppm	ASTM D5185(m)	<b>&lt;1</b>	<1	0
Aluminum	ppm	ASTM D5185(m) >20	<b>&lt;1</b>	<1	<1
Lead	ppm	ASTM D5185(m) >20	<b>&lt;1</b>	2	<1
Copper	ppm	ASTM D5185(m) >20	<b>1</b>	1	<1
Tin	ppm	ASTM D5185(m) >20	<b>0</b>	0	0
Antimony	ppm	ASTM D5185(m)	<b>&lt;1</b>	<1	<1
Vanadium	ppm	ASTM D5185(m)	<b>0</b>	0	0
Beryllium	ppm	ASTM D5185(m)	<b>0</b>	0	0
Cadmium	ppm	ASTM D5185(m)	<b>0</b>	0	0

### ADDITIVES

	method	limit/base	current	history1	history2
Boron	ppm	ASTM D5185(m)	<b>4</b>	34	14
Barium	ppm	ASTM D5185(m)	<b>0</b>	<1	<1
Molybdenum	ppm	ASTM D5185(m)	<b>&lt;1</b>	0	0
Manganese	ppm	ASTM D5185(m)	<b>&lt;1</b>	<1	<1
Magnesium	ppm	ASTM D5185(m)	<b>&lt;1</b>	0	<1
Calcium	ppm	ASTM D5185(m)	<b>1</b>	2	<1
Phosphorus	ppm	ASTM D5185(m)	<b>177</b>	465	482
Zinc	ppm	ASTM D5185(m)	<b>4</b>	2	10
Sulfur	ppm	ASTM D5185(m)	<b>12424</b>	5654	15060
Lithium	ppm	ASTM D5185(m)	<b>&lt;1</b>	<1	<1

### CONTAMINANTS

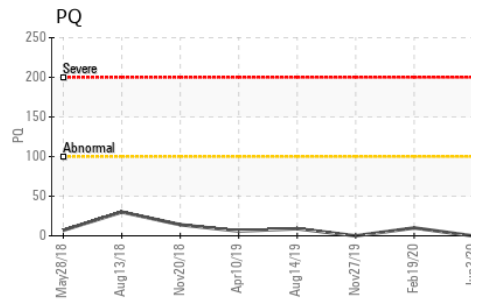
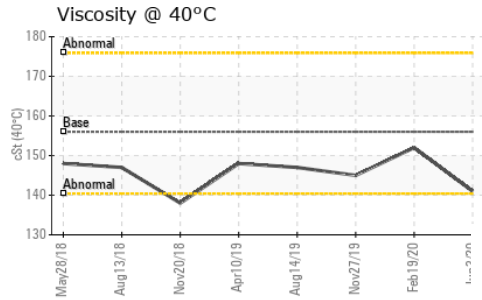
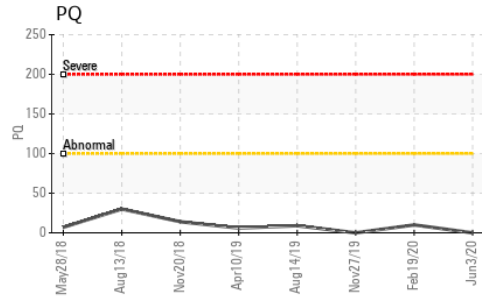
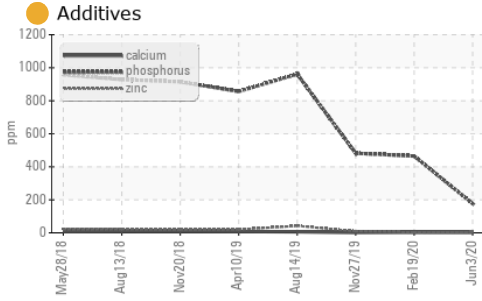
	method	limit/base	current	history1	history2
Silicon	ppm	ASTM D5185(m) >15	<b>6</b>	11	8
Sodium	ppm	ASTM D5185(m)	<b>0</b>	0	<1
Potassium	ppm	ASTM D5185(m) >20	<b>0</b>	<1	<1

### FLUID DEGRADATION

	method	limit/base	current	history1	history2
Acid Number (AN)	mg KOH/g	ASTM D974*	<b>0.69</b>	1.02	1.44



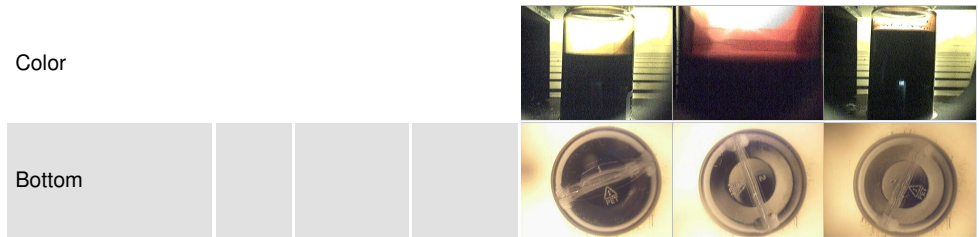
# OIL ANALYSIS REPORT



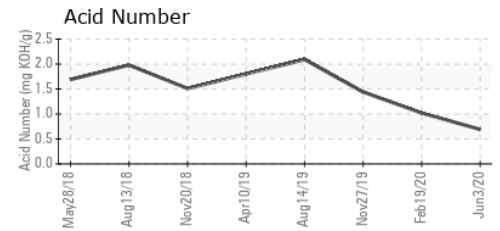
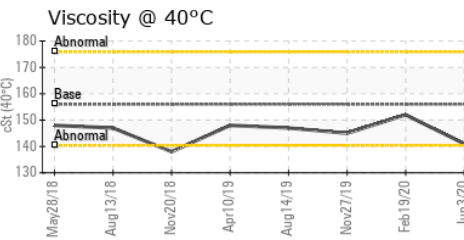
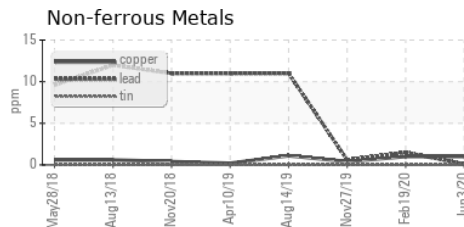
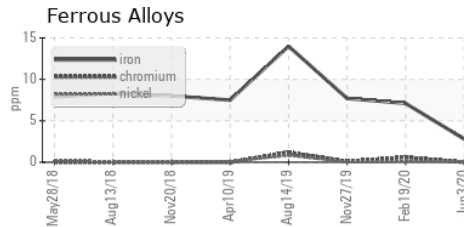
VISUAL	method	limit/base	current	history1	history2
White Metal	scalar	Visual*	NONE	VLITE	NONE
Yellow Metal	scalar	Visual*	NONE	NONE	NONE
Precipitate	scalar	Visual*	NONE	NONE	NONE
Silt	scalar	Visual*	NONE	NONE	NONE
Debris	scalar	Visual*	NONE	VLITE	VLITE
Sand/Dirt	scalar	Visual*	NONE	NONE	NONE
Appearance	scalar	Visual*	NORML	NORML	NORML
Odor	scalar	Visual*	NORML	NORML	NORML
Emulsified Water	scalar	Visual*	NEG	NEG	NEG
Free Water	scalar	Visual*	NEG	NEG	NEG

FLUID PROPERTIES	method	limit/base	current	history1	history2
Visc @ 40°C	cSt	ASTM D7279(m)	156	141	152

SAMPLE IMAGES	method	limit/base	current	history1	history2
---------------	--------	------------	---------	----------	----------



## GRAPHS



**Laboratory** : WearCheck - C8-1175 Appleby Line, Burlington, ON L7L 5H9  
**Sample No.** : WC0435410  
**Lab Number** : 02363809  
**Unique Number** : 5071253  
**Test Package** : IND 2 ( Additional Tests: PQ, TAN Man )

**HIRAM WALKER & SONS LTD.**  
 2072 RIVERSIDE DRIVE EAST, BOX 2518  
 WINDSOR, ON  
 CA N8Y 4S5  
 Contact: Matt Morand  
 matt.morand@pernod-ricard.com  
 T: (519)561-5359  
 F: (519)971-5719

To discuss this sample report, contact Customer Service at 1-800-268-2131.  
 Test denoted (\*) outside scope of accreditation, (m) method modified, (e) tested at external lab.  
 Validity of results and interpretation are based on the sample and information as supplied.