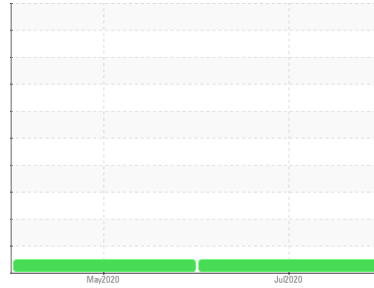




Machine Id
LIEBHERR LH30M 118651-1253
 Component
Transmission (Manual)
 Fluid
TDTO FLUID SAE 10W (--- GAL)



DIAGNOSIS

Recommendation

Échantillonner de nouveau l'équipement au prochain intervalle de vidange afin d'en surveiller la condition.

Wear

Les taux d'usure de tous les composants sont normaux.

Contamination

Il n'y a aucun indice de contamination dans le le fluide.

Fluid Condition

L'état de le fluide est acceptable pour la durée de service.

SAMPLE INFORMATION		method	limit/base	current	history1	history2
Sample Number	Client Info			LH0160699	LH0160685	---
Sample Date	Client Info			20 Jul 2020	10 May 2020	---
Machine Age	hrs	Client Info		2000	1000	---
Oil Age	hrs	Client Info		0	0	---
Oil Changed	Client Info			N/A	N/A	---
Sample Status				NORMAL	NORMAL	---

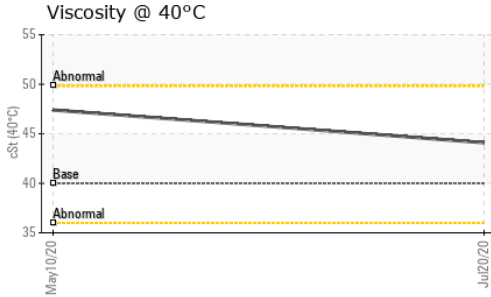
CONTAMINATION		method	limit/base	current	history1	history2
Water	WC Method		>0.1	NEG	NEG	---

WEAR METALS		method	limit/base	current	history1	history2
Iron	ppm	ASTM D5185(m)	>200	45	82	---
Chromium	ppm	ASTM D5185(m)	>5	<1	1	---
Nickel	ppm	ASTM D5185(m)	>5	<1	<1	---
Titanium	ppm	ASTM D5185(m)		0	<1	---
Silver	ppm	ASTM D5185(m)	>7	0	<1	---
Aluminum	ppm	ASTM D5185(m)	>25	3	4	---
Lead	ppm	ASTM D5185(m)	>45	2	2	---
Copper	ppm	ASTM D5185(m)	>225	56	51	---
Tin	ppm	ASTM D5185(m)	>10	1	2	---
Antimony	ppm	ASTM D5185(m)		<1	<1	---
Vanadium	ppm	ASTM D5185(m)		<1	<1	---
Beryllium	ppm	ASTM D5185(m)		0	0	---
Cadmium	ppm	ASTM D5185(m)		0	<1	---

ADDITIVES		method	limit/base	current	history1	history2
Boron	ppm	ASTM D5185(m)	37	39	16	---
Barium	ppm	ASTM D5185(m)	7	0	2	---
Molybdenum	ppm	ASTM D5185(m)	5	<1	<1	---
Manganese	ppm	ASTM D5185(m)		14	50	---
Magnesium	ppm	ASTM D5185(m)	40	9	8	---
Calcium	ppm	ASTM D5185(m)	2650	2880	3347	---
Phosphorus	ppm	ASTM D5185(m)	1050	1117	1184	---
Zinc	ppm	ASTM D5185(m)	1075	1171	1182	---
Sulfur	ppm	ASTM D5185(m)	5750	5878	8429	---
Lithium	ppm	ASTM D5185(m)		<1	<1	---

CONTAMINANTS		method	limit/base	current	history1	history2
Silicon	ppm	ASTM D5185(m)	>125	5	7	---
Sodium	ppm	ASTM D5185(m)		15	39	---
Potassium	ppm	ASTM D5185(m)	>20	3	4	---

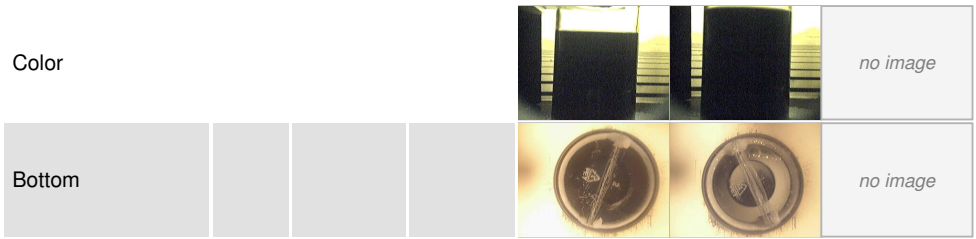
OIL ANALYSIS REPORT



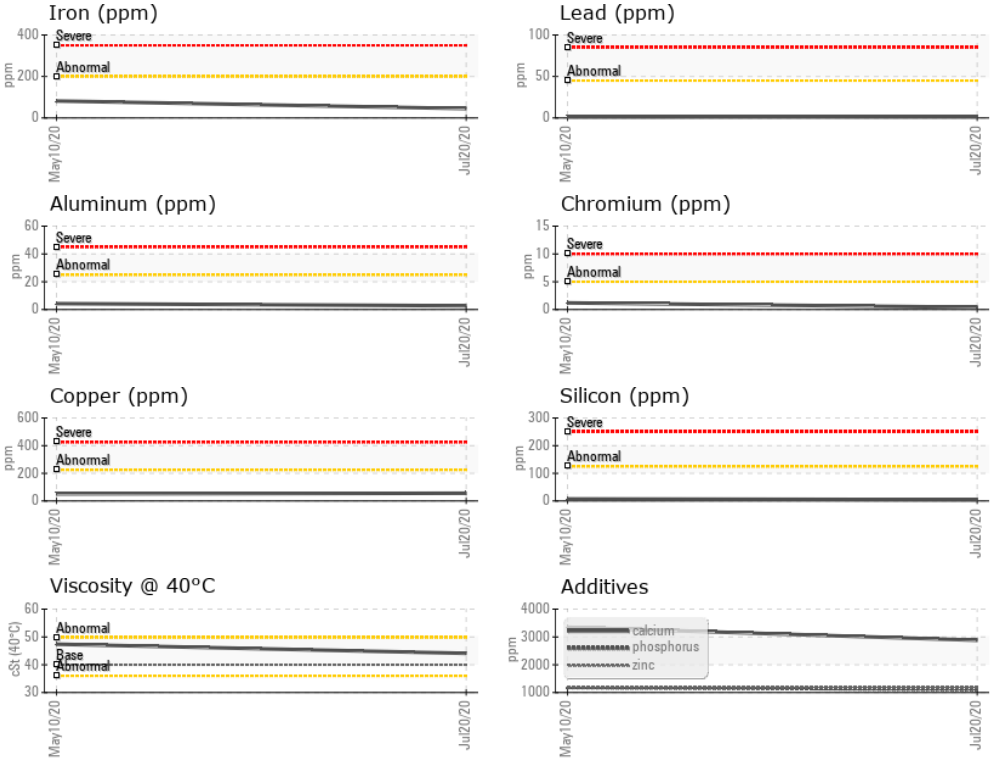
VISUAL	method	limit/base	current	history1	history2
White Metal	scalar	Visual*	NONE	VLITE	NONE
Yellow Metal	scalar	Visual*	NONE	NONE	NONE
Precipitate	scalar	Visual*	NONE	NONE	NONE
Silt	scalar	Visual*	NONE	NONE	NONE
Debris	scalar	Visual*	NONE	NONE	VLITE
Sand/Dirt	scalar	Visual*	NONE	NONE	NONE
Appearance	scalar	Visual*	NORML	NORML	NORML
Odor	scalar	Visual*	NORML	NORML	NORML
Emulsified Water	scalar	Visual*	>0.1	NEG	NEG
Free Water	scalar	Visual*		NEG	NEG

FLUID PROPERTIES	method	limit/base	current	history1	history2
Visc @ 40°C	cSt	ASTM D7279(m)	40	44.1	47.4

SAMPLE IMAGES	method	limit/base	current	history1	history2
---------------	--------	------------	---------	----------	----------



GRAPHS



Laboratory : WearCheck - C8-1175 Appleby Line, Burlington, ON L7L 5H9 9341-2906 QUEBEC INC. - Forestiers JRM Inc
Sample No. : LH0160699 **Received** : 10 Aug 2020 **491 ROUTE 381**
Lab Number : 02369563 **Diagnosed** : 10 Aug 2020 **Ferland-et-Boilleau, QC**
Unique Number : 5085010 **Diagnostician** : Wes Davis **CA G0V 1H0**
Test Package : MOBCE (Additional Tests: Visual) **Contact: Remi Simard**
remisimard@hotmail.ca
T: (418)817-3634
F:

To discuss this sample report, contact Customer Service at 1-800-268-2131.
 Test denoted (*) outside scope of accreditation, (m) method modified, (e) tested at external lab.
 Validity of results and interpretation are based on the sample and information as supplied.