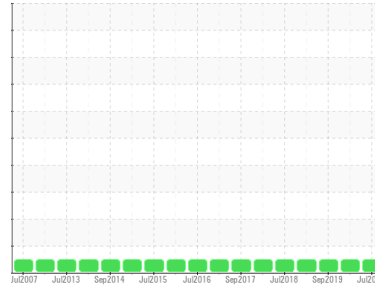




OIL ANALYSIS REPORT

Sample Rating Trend

NORMAL



Machine Id
PHR-G2-FWBR

Component
Bearing

Fluid
MOBIL DTE OIL HVY MEDIUM (--- GAL)

DIAGNOSIS

Recommendation

Resample at the next service interval to monitor.
NOTE: Please provide information regarding reservoir capacity, filter type and micron rating with next sample.

Wear

All component wear rates are normal.

Contamination

The system cleanliness is acceptable for your target ISO 4406 cleanliness code. The system and fluid cleanliness is acceptable.

Fluid Condition

The AN level is acceptable for this fluid. The condition of the oil is suitable for further service.

SAMPLE INFORMATION		method	limit/base	current	history1	history2
Sample Number	Client Info			WC0328002	WC0316832	WC0299336
Sample Date	Client Info			17 Jul 2020	13 Jan 2020	27 Sep 2019
Machine Age	days	Client Info		0	0	0
Oil Age	days	Client Info		0	0	0
Oil Changed	Client Info			N/A	N/A	N/A
Sample Status				NORMAL	NORMAL	NORMAL

CONTAMINATION		method	limit/base	current	history1	history2
Water	WC Method		>2	NEG	NEG	NEG

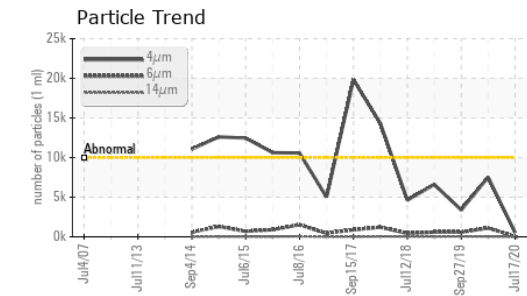
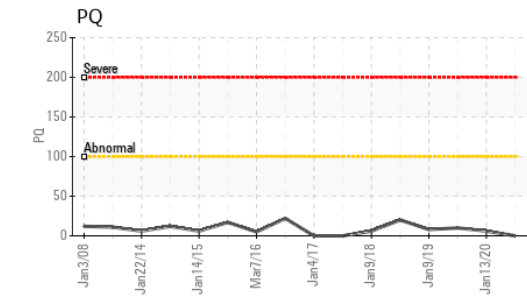
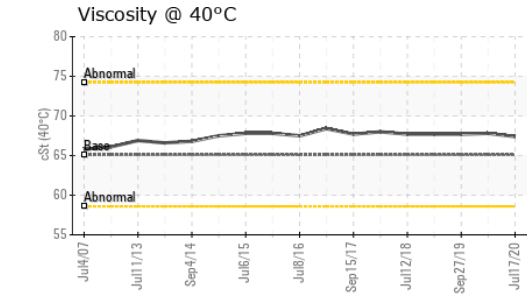
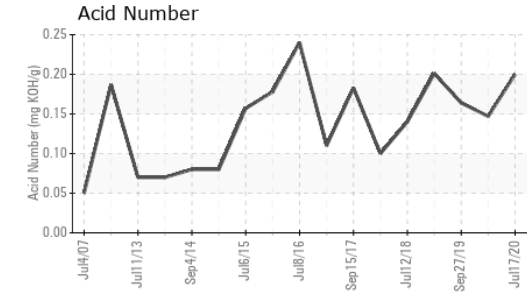
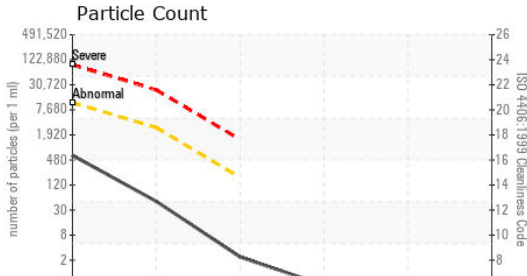
WEAR METALS		method	limit/base	current	history1	history2
PQ		ASTM D8184*		0	6	10
Iron	ppm	ASTM D5185(m)	>63	3	2	2
Chromium	ppm	ASTM D5185(m)		0	0	0
Nickel	ppm	ASTM D5185(m)		<1	<1	<1
Titanium	ppm	ASTM D5185(m)		0	0	0
Silver	ppm	ASTM D5185(m)		<1	0	0
Aluminum	ppm	ASTM D5185(m)	>2	<1	<1	0
Lead	ppm	ASTM D5185(m)	>161	2	2	2
Copper	ppm	ASTM D5185(m)	>13	2	2	2
Tin	ppm	ASTM D5185(m)	>27	10	10	10
Antimony	ppm	ASTM D5185(m)		1	<1	<1
Vanadium	ppm	ASTM D5185(m)		0	0	0
Beryllium	ppm	ASTM D5185(m)		0	0	0
Cadmium	ppm	ASTM D5185(m)		0	0	0

ADDITIVES		method	limit/base	current	history1	history2
Boron	ppm	ASTM D5185(m)		<1	<1	0
Barium	ppm	ASTM D5185(m)		6	5	4
Molybdenum	ppm	ASTM D5185(m)		0	0	0
Manganese	ppm	ASTM D5185(m)		<1	<1	<1
Magnesium	ppm	ASTM D5185(m)		<1	<1	0
Calcium	ppm	ASTM D5185(m)		<1	<1	<1
Phosphorus	ppm	ASTM D5185(m)		5	5	5
Zinc	ppm	ASTM D5185(m)		4	5	5
Sulfur	ppm	ASTM D5185(m)		1743	1729	1740
Lithium	ppm	ASTM D5185(m)		<1	<1	<1

CONTAMINANTS		method	limit/base	current	history1	history2
Silicon	ppm	ASTM D5185(m)	>12	<1	0	0
Sodium	ppm	ASTM D5185(m)		2	<1	<1
Potassium	ppm	ASTM D5185(m)	>20	<1	<1	<1



OIL ANALYSIS REPORT



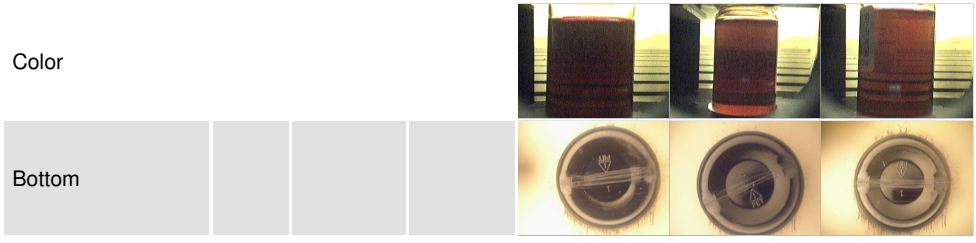
FLUID CLEANLINESS	method	limit/base	current	history1	history2
Particles >4µm	ASTM D7647	>10000	543	7524	3381
Particles >6µm	ASTM D7647	>2500	43	1111	589
Particles >14µm	ASTM D7647	>160	2	29	40
Particles >21µm	ASTM D7647	>40	0	7	12
Particles >38µm	ASTM D7647	>10	0	0	0
Particles >71µm	ASTM D7647	>3	0	0	0
Oil Cleanliness	ISO 4406 (c)	>20/18/14	16/13/9	20/17/12	19/16/12

FLUID DEGRADATION	method	limit/base	current	history1	history2
Acid Number (AN)	mg KOH/g ASTM D974*		0.20	0.147	0.164

VISUAL	method	limit/base	current	history1	history2
White Metal	scalar Visual*	NONE	NONE	NONE	NONE
Yellow Metal	scalar Visual*	NONE	NONE	NONE	NONE
Precipitate	scalar Visual*	NONE	NONE	NONE	NONE
Silt	scalar Visual*	NONE	NONE	NONE	NONE
Debris	scalar Visual*	NONE	NONE	NONE	NONE
Sand/Dirt	scalar Visual*	NONE	NONE	NONE	NONE
Appearance	scalar Visual*	NORML	NORML	NORML	NORML
Odor	scalar Visual*	NORML	NORML	NORML	NORML
Emulsified Water	scalar Visual*	>2	NEG	NEG	NEG
Free Water	scalar Visual*		NEG	NEG	NEG

FLUID PROPERTIES	method	limit/base	current	history1	history2
Visc @ 40°C	cSt ASTM D7279(m)	65.1	67.4	67.8	67.7

SAMPLE IMAGES	method	limit/base	current	history1	history2
---------------	--------	------------	---------	----------	----------



Laboratory : WearCheck - C8-1175 Appleby Line, Burlington, ON L7L 5H9
Sample No. : WC0328002 **Received** : 16 Oct 2020
Lab Number : **02381803** **Diagnosed** : 21 Oct 2020
Unique Number : 5121257 **Diagnostician** : Kevin Marson
Test Package : IND 2 (Additional Tests: PRTCOUNT, TAN Man)

NEWFOUNDLAND POWER INC.
 50 DUFFY PLACE, PO BOX 8910
 ST. JOHNS, NL
 CA A1B 3P6
 Contact: Paul Martin
 pmartin@newfoundlandpower.com
 T:
 F: (709)737-2926

To discuss this sample report, contact Customer Service at 1-800-268-2131.
 Test denoted (*) outside scope of accreditation, (m) method modified, (e) tested at external lab.
 Validity of results and interpretation are based on the sample and information as supplied.